



# Hallmark Plaza Suite 101

2101 4TH AVENUE E., OLYMPIA, WA



# FOR LEASE



## CONVENIENT LOCATION

Hallmark Plaza is located in a very convenient area between Olympia & Lacey with high traffic counts.

Very well maintained with an abundance of parking.

First floor suite with 1,554 square feet.

Multiple private offices

Office or Retail Tenant

Landlord willing to remodel, see potential layouts on the next page

Lease rate

**1554 SF @ \$16.00 + utilities = \$2,072/month**



**Debbie Draper-Aikins**  
360.791.3869  
debbie.draper@cbolympia.com

COLDWELL BANKER  
EVERGREEN OLYMPIC REALTY

3333 Capitol Boulevard S.  
Olympia, WA 98501

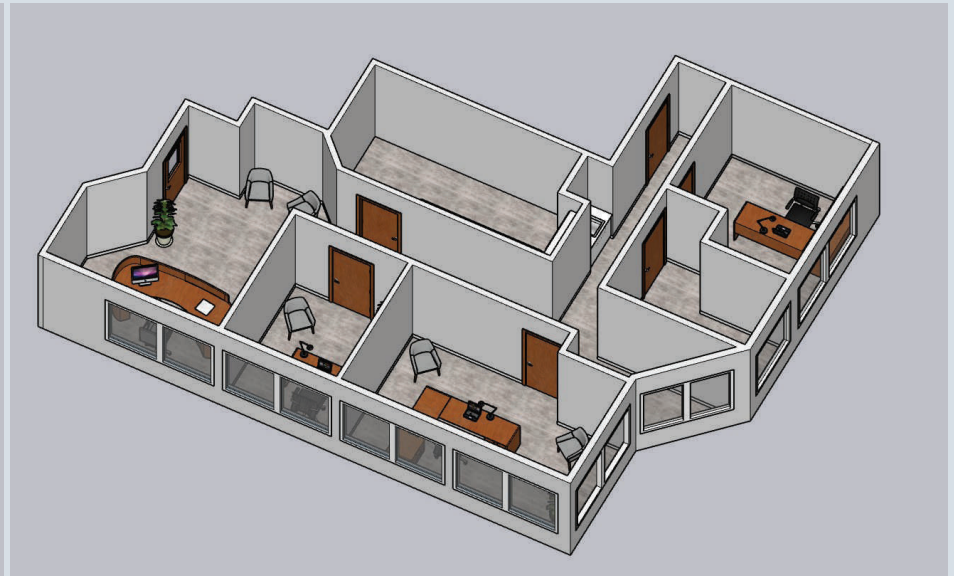
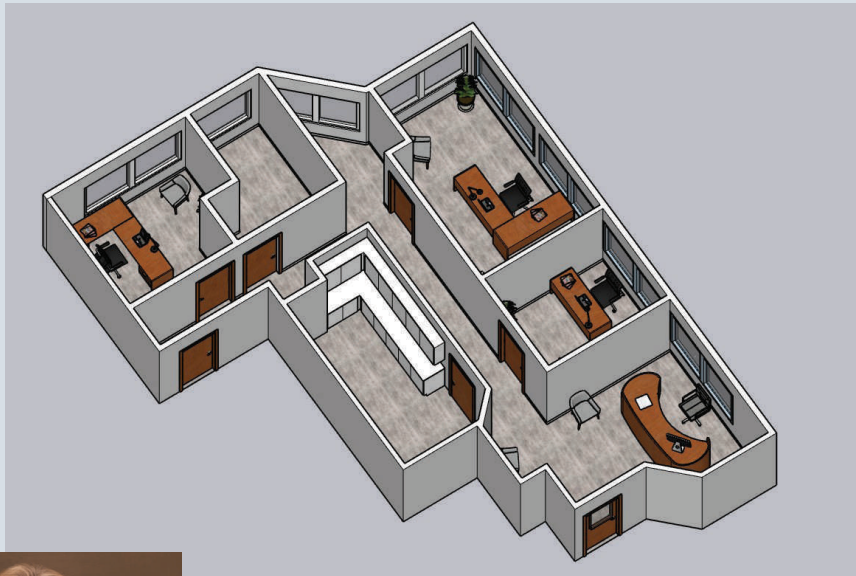


**COLDWELL BANKER  
COMMERCIAL**  
EVERGREEN OLYMPIC  
REALTY, INC.

# Commercial Office Space

2101 4TH AVENUE E., OLYMPIA, WA

## POTENTIAL REMODEL RENDERINGS



**Debbie Draper-Aikins**

360.791.3869

debbie.draper@cbolympia.com

COLDWELL BANKER  
EVERGREEN OLYMPIC REALTY

3333 Capitol Boulevard S.  
Olympia, WA 98501



**COLDWELL BANKER  
COMMERCIAL**  
EVERGREEN OLYMPIC  
REALTY, INC.

# Commercial Office Space

2101 4TH AVENUE E., OLYMPIA, WA

## ADDITIONAL PHOTOS



**Debbie Draper-Aikins**  
360.791.3869  
debbie.draper@cbolympia.com

COLDWELL BANKER  
EVERGREEN OLYMPIC REALTY

3333 Capitol Boulevard S.  
Olympia, WA 98501

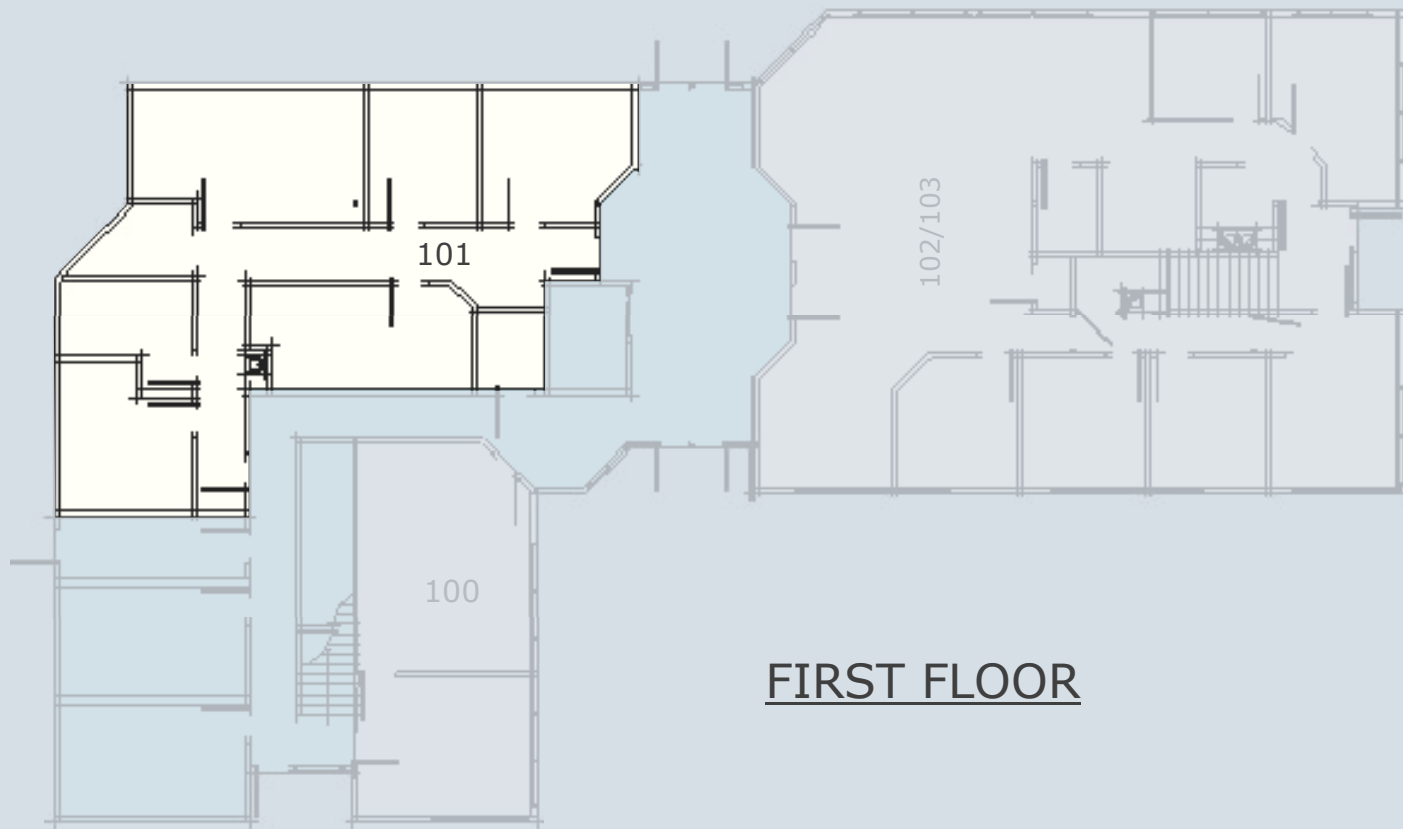


**COLDWELL BANKER  
COMMERCIAL**  
EVERGREEN OLYMPIC  
REALTY, INC.

# Commercial Office Space

2101 4TH AVENUE E., OLYMPIA, WA

## FLOOR PLAN



**Debbie Draper-Aikins**  
360.791.3869  
debbie.draper@cbolympia.com

COLDWELL BANKER  
EVERGREEN OLYMPIC REALTY

3333 Capitol Boulevard S.  
Olympia, WA 98501



**COLDWELL BANKER  
COMMERCIAL**  
EVERGREEN OLYMPIC  
REALTY, INC.