



# FOR SUBLEASE 25,000 SF

4301 West Valley Highway  
Building 7  
Sumner, WA

Thad Mallory, SIOR  
t 425-362-1410  
thad.mallory@nrmk.com

**NEWMARK**

## Property Details

---

Size : 25,000 SF

---

Access To Restrooms Only

---

Clear Height : 30'

---

Loading : 6 Dock High Doors

---

Racking Available

---

Rate : Contact Broker

---

Master Lease Expires : November 30, 2030

---

Flexible Lease Terms Up To Five Years

---



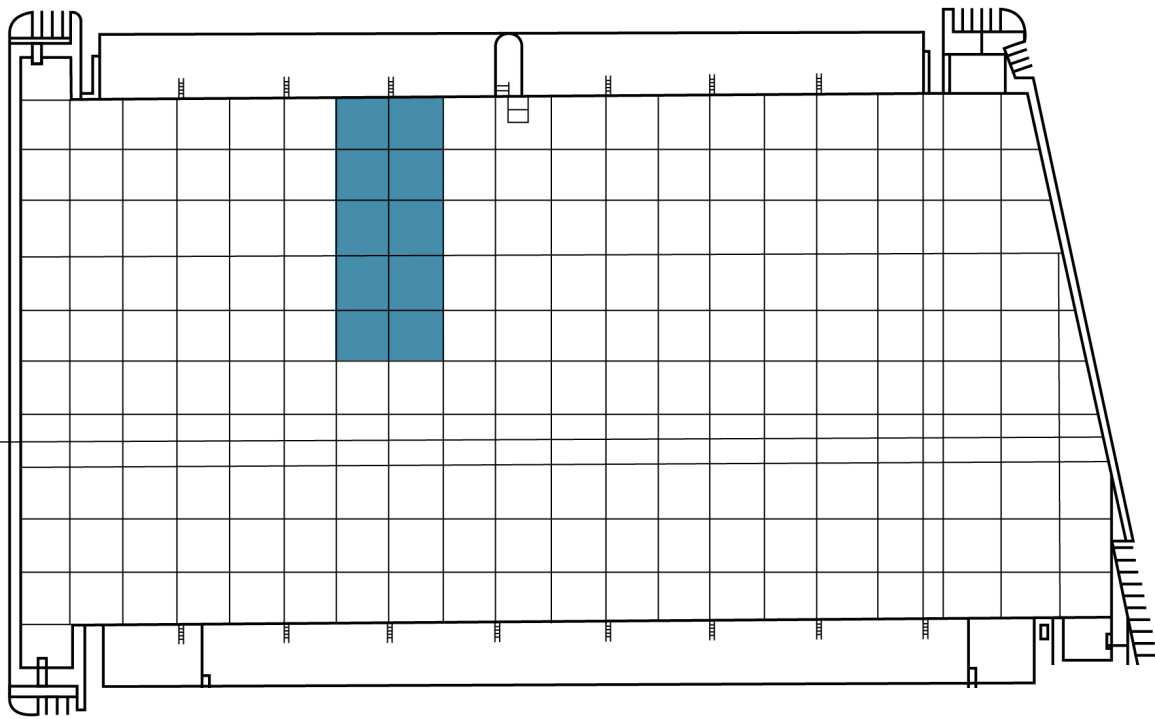
---

Amenities Nearby

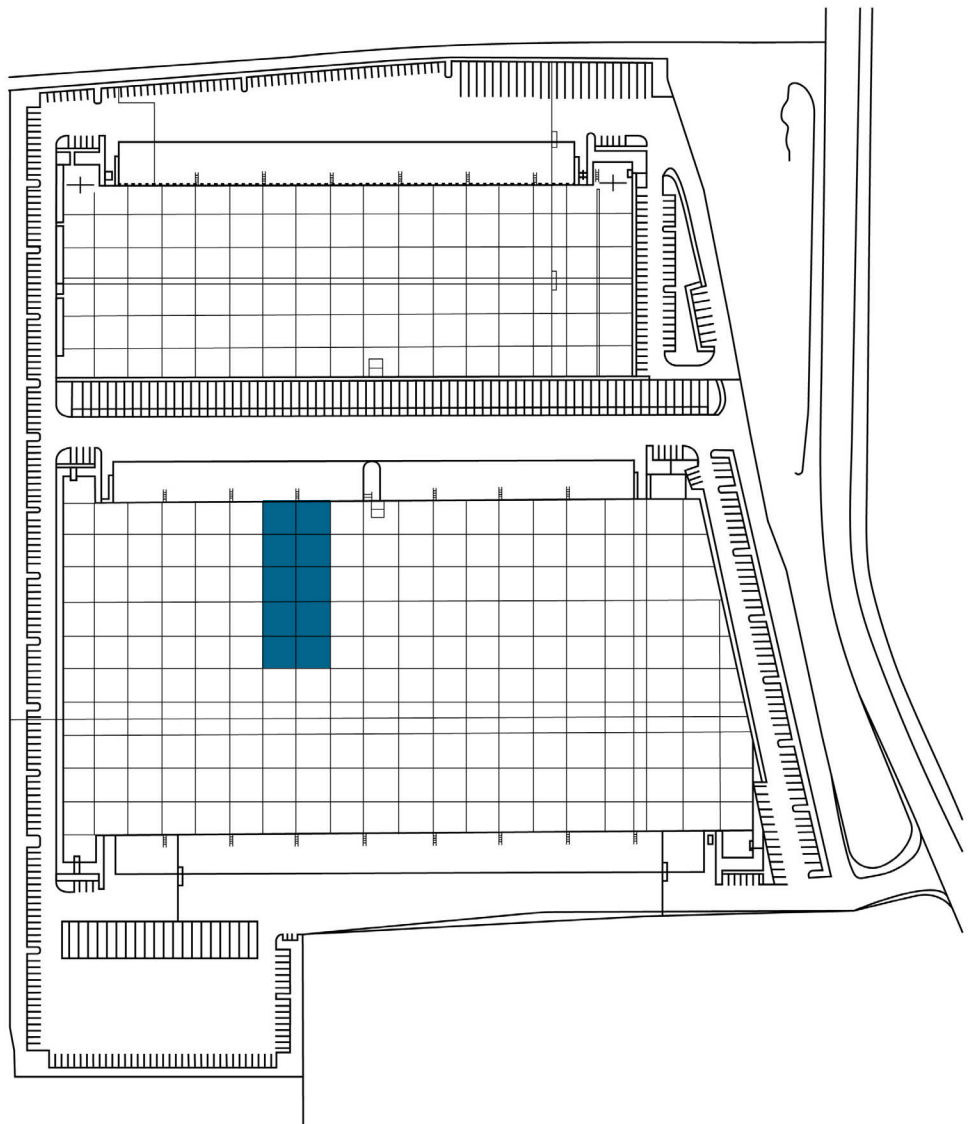


---

Access to SR 167 & SR 512



## Site & Floor Plan

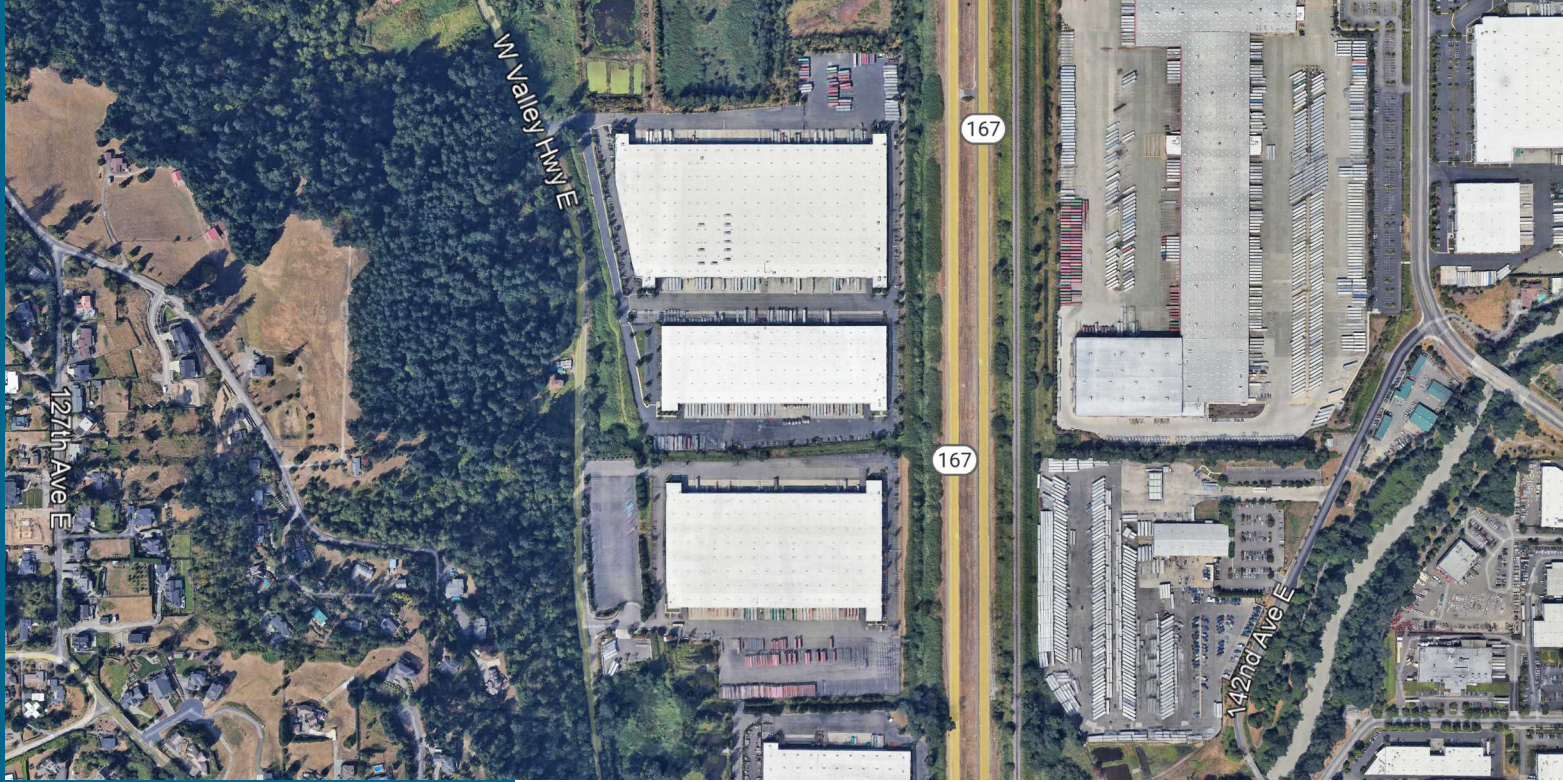


**FOR  
SUBLEASE  
25,000 SF**

4301 West Valley Highway  
Building 7  
Sumner, WA

Thad Mallory, SIOR  
t 425-362-1410  
thad.mallory@nrmk.com

**NEWMARK**

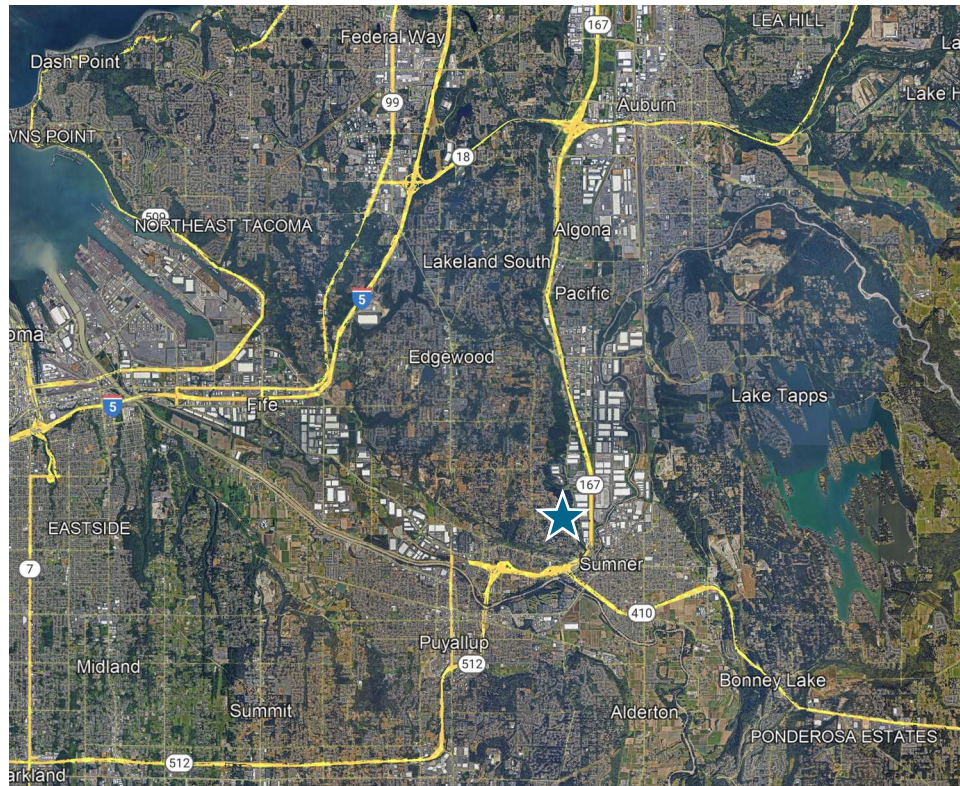


# FOR SUBLEASE 25,000 SF

4301 West Valley Highway  
Building 7  
Sumner, WA

Thad Mallory, SIOR  
t 425-362-1410  
thad.mallory@nmrk.com

## Aerial Views



The distributor of this communication is performing acts for which a real estate license is required. The information contained herein has been obtained from sources deemed reliable but has not been verified and no guarantee, warranty or representation, either express or implied, is made with respect to such information. Terms of sale or lease and availability are subject to change or withdrawal without notice.

# NEWMARK