



 **JLL** SEE A BRIGHTER WAY

For sublease

*5,395 SF Plug and Play
Office and Studio Space*

The Junction
9924 NE 185th Street,
Bothell, WA



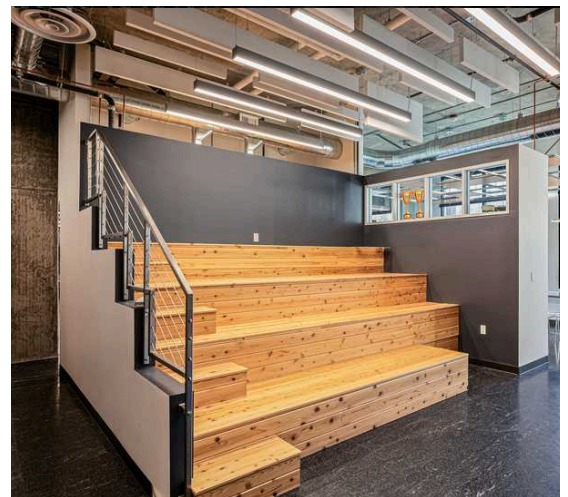
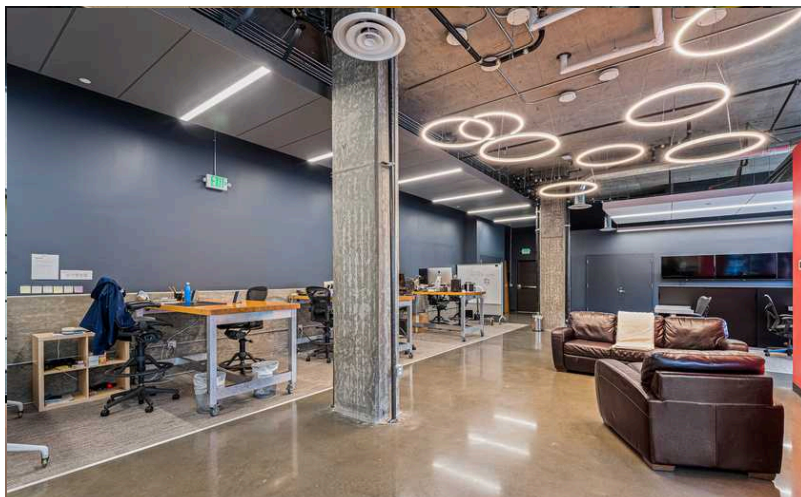
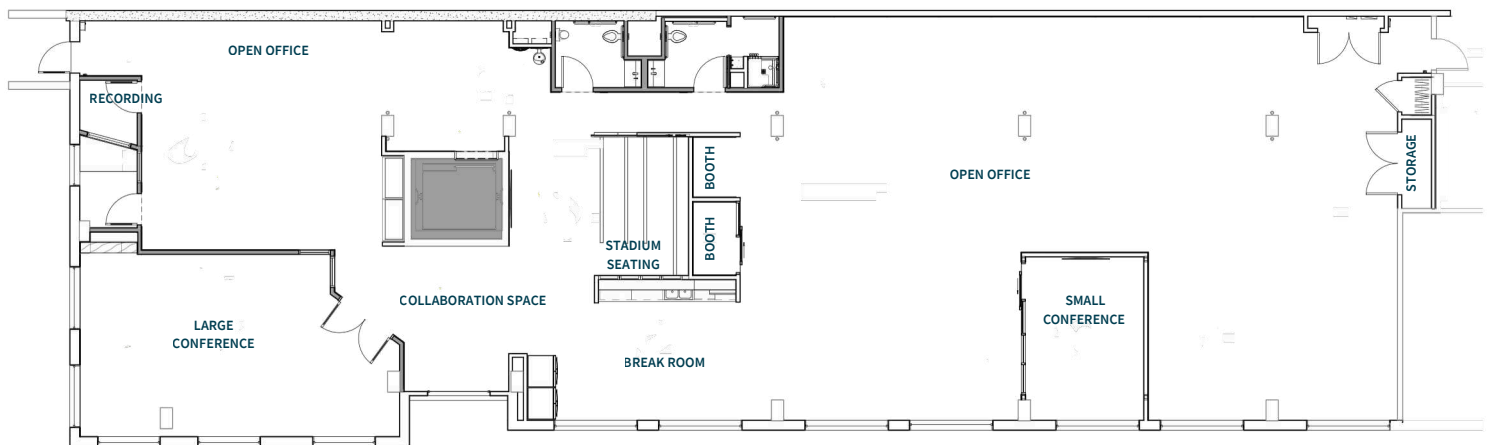
Rare urban office & studio space

Address 9924 NE 185th Street, # 210, Bothell, WA

Size 5,395 SF

Term Now through February 2029

Features One large conference room, one small conference room, two sound booths/call rooms, one recording studio, open work space, and employee break area. Fully furnished & move-in ready.



In the center of Bothell

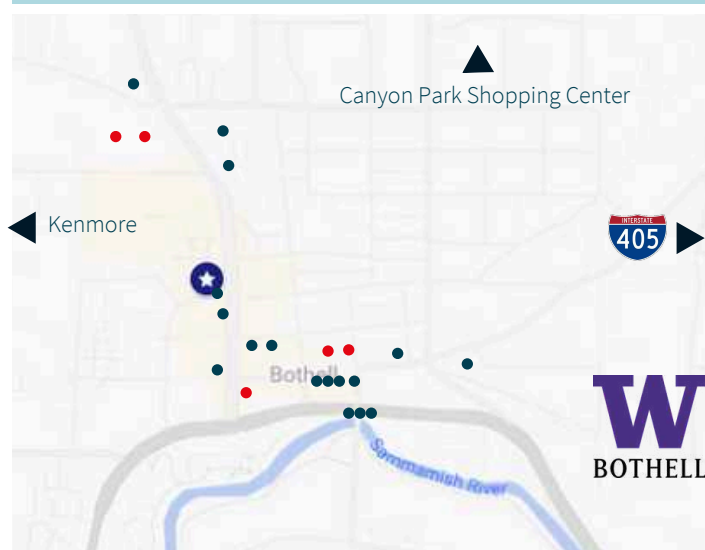
Find your perfect office space in the center of Downtown Bothell, at the Junction. The mixed-use development is home to lively retail and 130 residetail units and surrounded by Bothell's nearby dining, retail, and leisure amenities.

Travel times

Downtown Bellevue	Downtown Seattle
20 min.	28 min.

Area Amenities

 Dining  Retail





Jake Bos

jake.bos@jll.com

+1 (206) 384 3814

Bailey Hallis

bailey.hallis@jll.com

+1 (206) 777 5203

