

REO FLATS

977 RSF RETAIL AVAILABLE | CAPITOL HILL





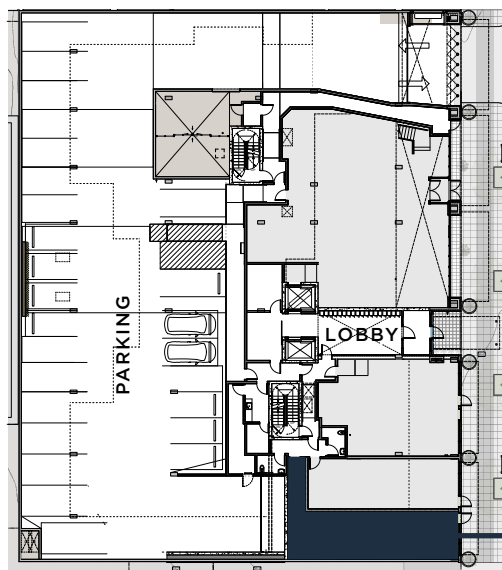
BUILDING HIGHLIGHTS

- 977 RSF retail space located in Capitol Hill's Pike - Pine corridor
- REO Flats infuses the contemporary setting of Capitol Hill with the vintage spirit of Seattle's "auto-row"
- 108 residential units above provide for a steady built-in customer base
- REO Flats is surrounded by well-recognized restaurants, cafe's, and retail including Momiji, Oddfellows Cafe, Ferrari / Maserati, Rachel's Ginger Beer, and Sway & Cake to name a few. The building is also surrounded by local establishments, including neighboring Porchlight Coffee & Records, Nue, Artusi, Omega Ouzeri, and Spinasse

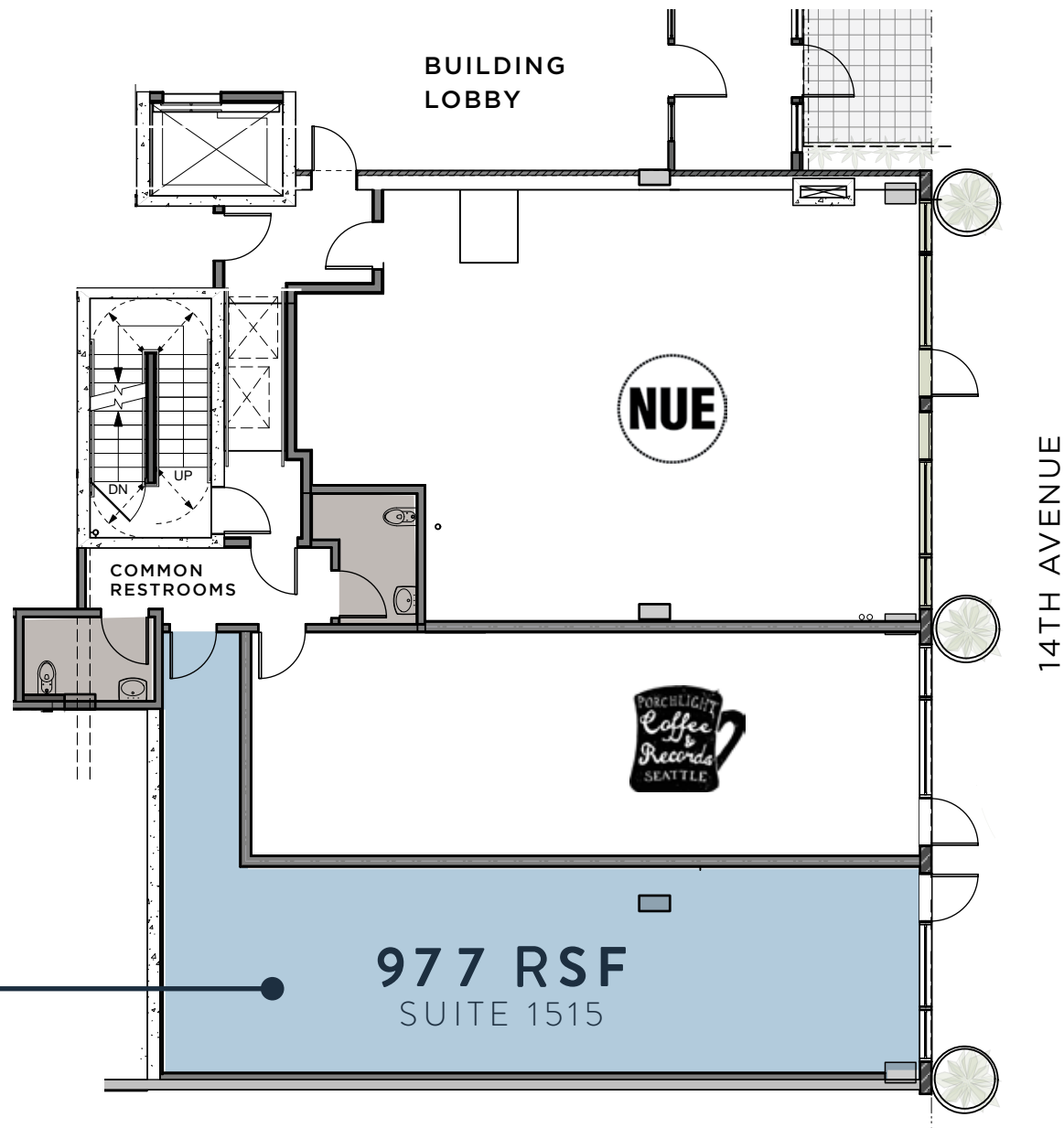


PROJECT DETAILS

AVAILABLE SF	977 RSF
ASKING RENT	\$36 - \$42 PSF + NNN
NNN ESTIMATE	\$12.66 PSF (estimated)
TENANT IMPROVEMENTS	Negotiable
DELIVERY	Available Now



14TH AVENUE



GREAT LOCATION

Capitol Hill is the most densely populated neighborhood in Seattle. With great demographics and one of the city's most prominent restaurant and bar scenes, REO Flats in Capitol Hill's Pike - Pine corridor is an ideal retail location.





NEIGHBORHOOD HIGHLIGHTS

REO Flats is a mixed-use development situated on the east edge of Capitol Hill, within the urban and active Pike - Pine Corridor. Located on 14th Avenue, just blocks from Cal Anderson Park, REO Flats is close to hip eateries, lively bars, boutique shops, and recreational spaces.

Join the many local iconic restaurants and retailers in the dense and vibrant neighborhood of Capitol Hill including Chophouse Row, Poquito's, Optimism Brewing, Bateau, Starbucks Roastery, Oddfellow's Cafe, Molly Moon's, and Rhein Haus.



2023 ESTIMATED DEMOGRAPHICS

Drive-Time	3 Min	5 Min	10 Min
Population	27,280	74,582	185,394
Daytime Population	35,695	101,238	353,767
Ave. HH Income	\$146,411	\$147,749	\$164,707





REO FLATS

FOR MORE INFORMATION:

ANNE MARIE KOEHLER
206.487.5167
annemarie.koehler@nmrk.com

ERIKA KOEHLER
206.487.5168
erika.koehler@nmrk.com

NEWMARK

The distributor of this communication is performing acts for which a real estate license is required. The information contained herein has been obtained from sources deemed reliable but has not been verified and no guarantee, warranty or representation, either express or implied, is made with respect to such information. Terms of sale or lease and availability are subject to change or withdrawal without notice. 10/20