

AVAILABLE FOR LEASE

THE BUTY BUILDING

*Office & Storage Spaces Available for Lease
in the Heart of Seattle's CID District*



501 S JACKSON ST, SEATTLE, WA

km Kidder
Mathews

THE BUTY BUILDING

Offices & Storage Spaces Available in Seattle's International District

The Buty Building is located in the heart of Seattle's Chinatown-International District, ideally at the corner of S Jackson St and 5th Ave S

The property is easily accessible across Seattle metropolitan neighborhoods and neighboring cities via multiple public transportation options, including Link light rail transit, King County metro bus, and Sounder Commuter rail transit

The building has an elevator, which provides Americans with Disabilities Act (ADA) access to all levels

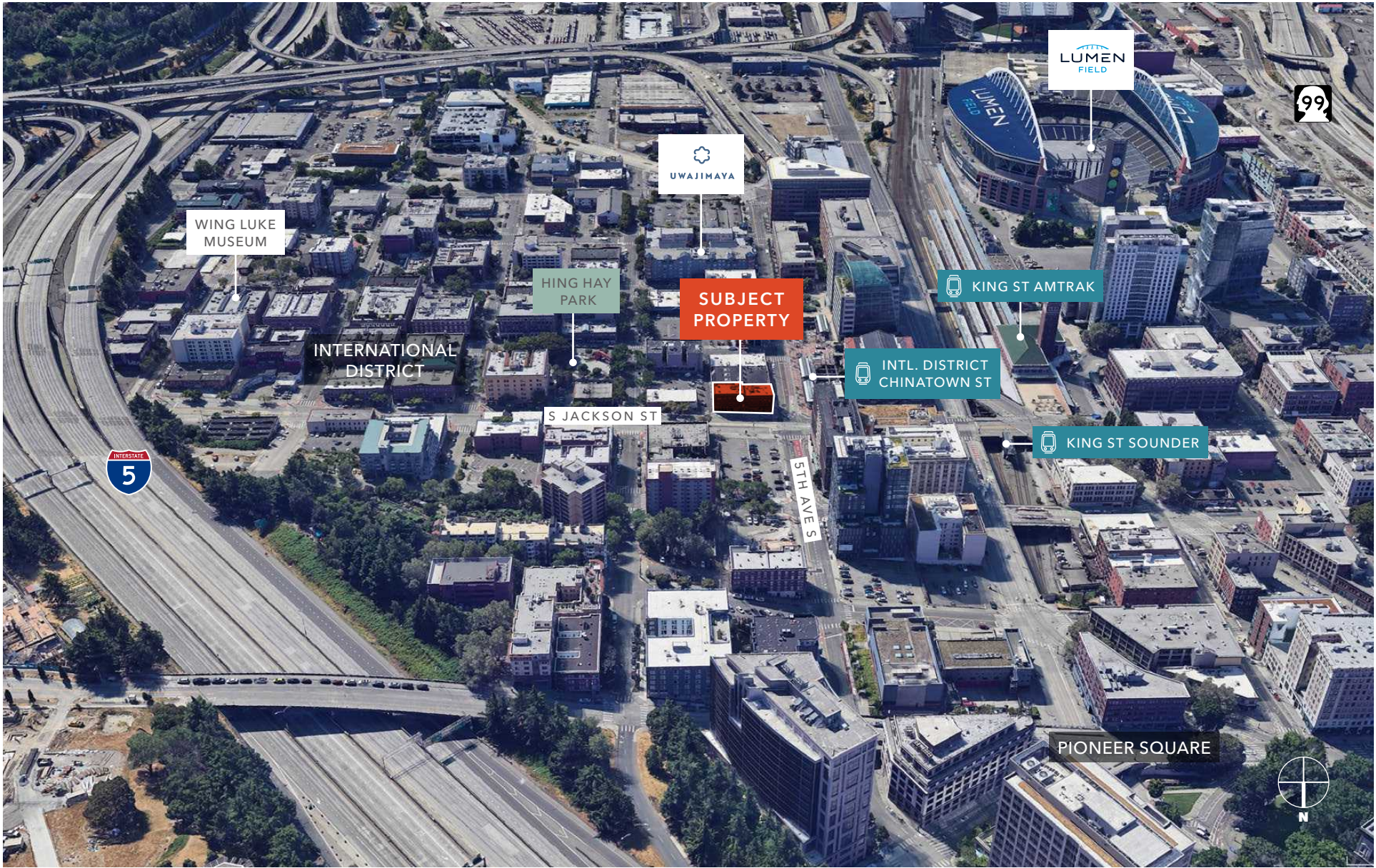
AVAILABILITIES

UNIT 201	1,854 SF
UNIT 301	675 SF
UNIT 303	802 SF
UNIT 305	555 SF
UNIT 306	1,064 SF
UNIT B-E	3,406 SF
LEASE RATE	Negotiable
AVAILABILITY	Now

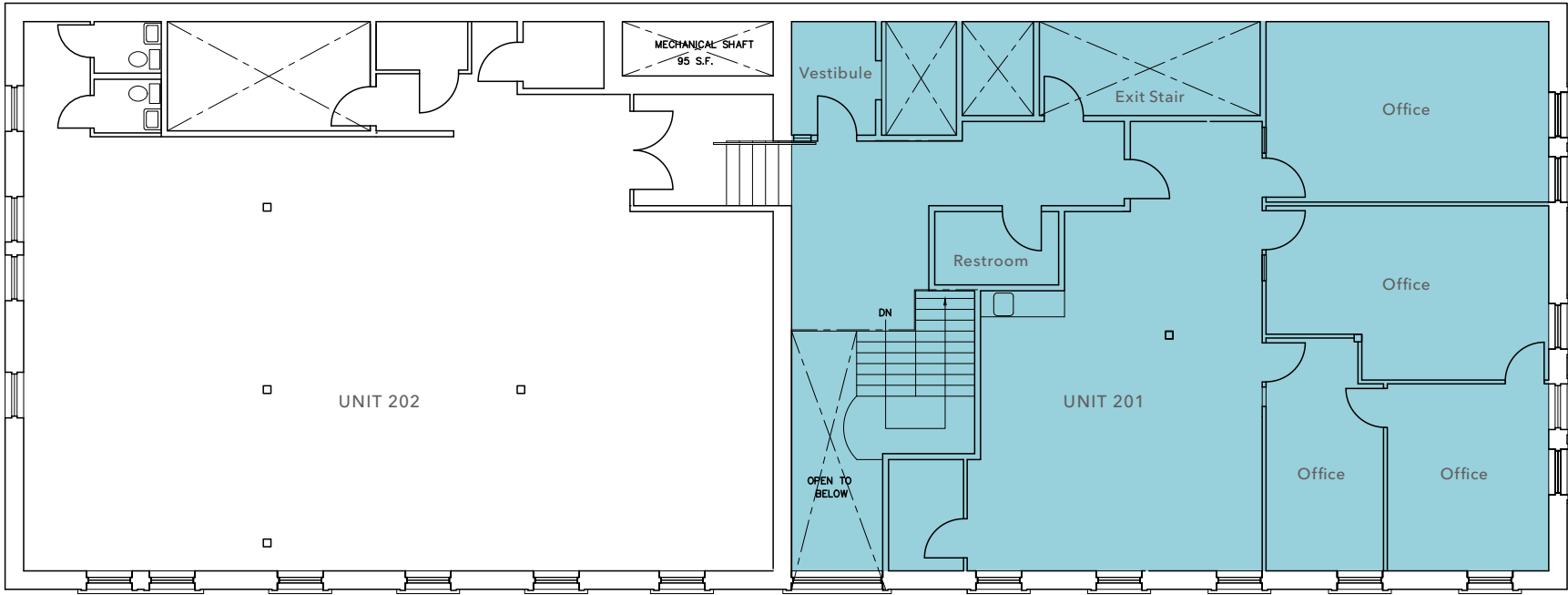
2 MIN
DRIVE TO I-5

5 MIN
DRIVE TO I-90





SECOND FLOOR



S JACKSON ST



1,854 SF

UNIT 201

NEGOTIABLE

LEASE RATE

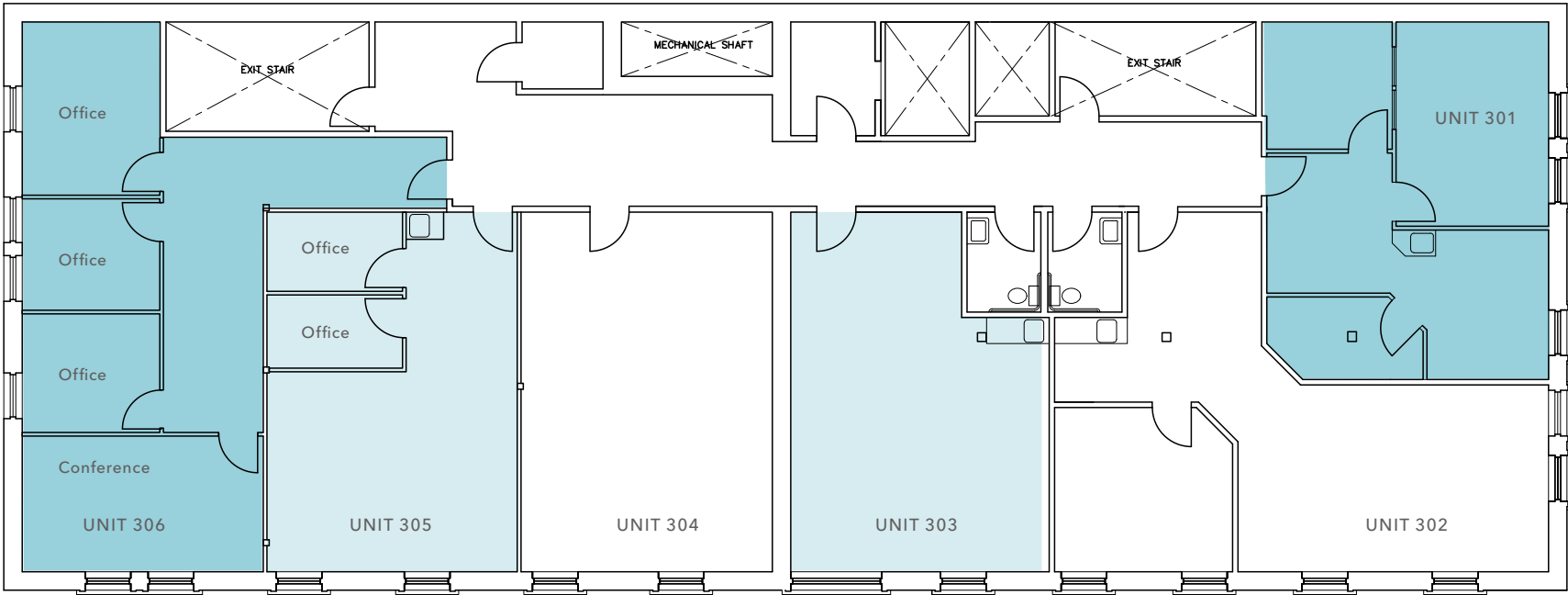
\$6.00/SF

EST. NNN EXPENSE

NOW

AVAILABLE

THIRD FLOOR



S JACKSON ST



675 SF

UNIT 301

802 SF

UNIT 303

555 SF

UNIT 305

1,064 SF

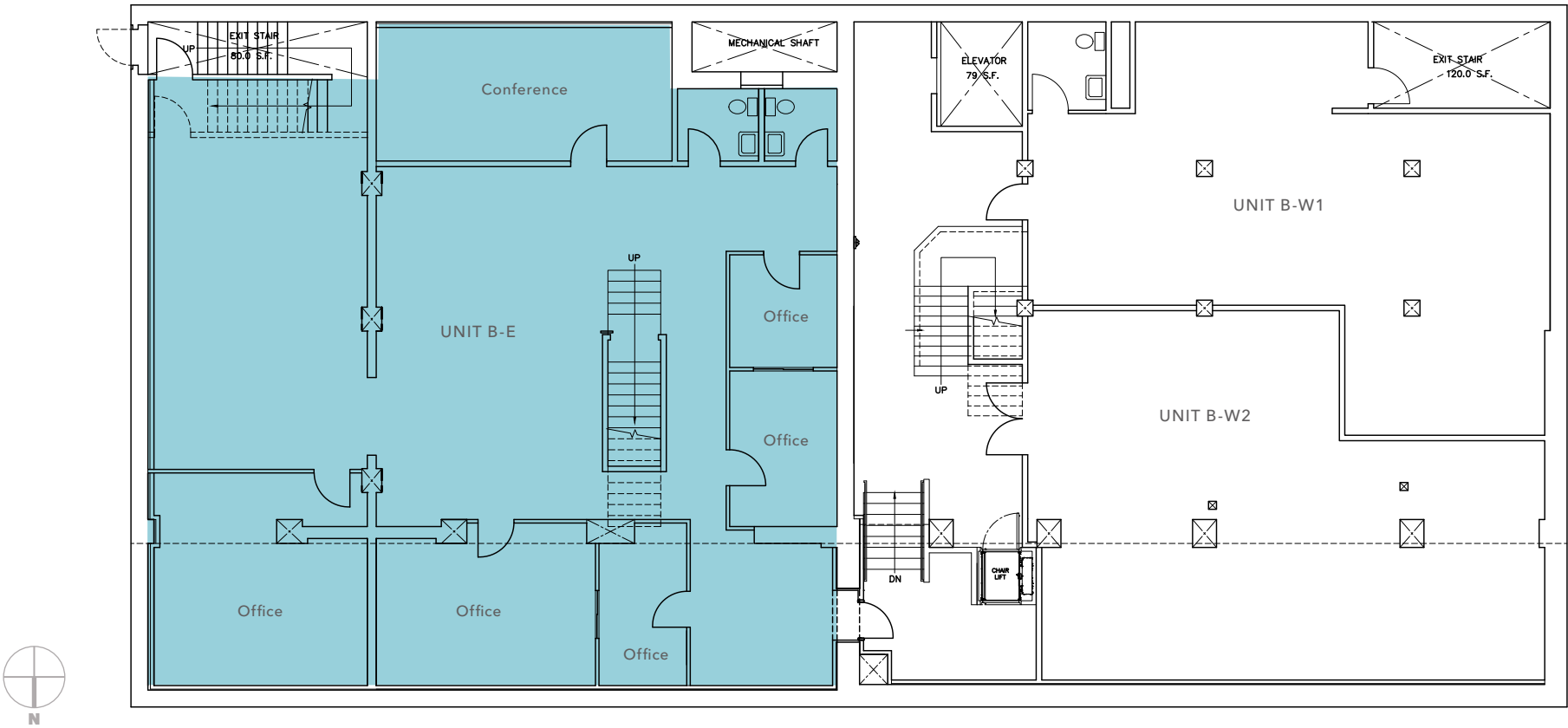
UNIT 306

NEGOTIABLE

LEASE RATE

UNIT B-E

The 3,406 SF below-grade office and assembly space has been renovated and updated with finishes such as partitioning, a drop ceiling grid, recessed lighting, fire sprinklers, restrooms, and floor coverings. An elevator lift has also been installed to comply with ADA requirements. The tenant enjoys direct entry to S Jackson St via a private stairway, as well as through the building's main entrance.



3,406 SF
AVAILABLE

NEGOTIABLE
LEASE RATE

\$6.00/SF
EST. NNN EXPENSE

NOW
AVAILABLE

DEMOGRAPHICS

POPULATION

	1 Mile	3 Miles	5 Miles
2010 CENSUS	31,241	165,663	366,810
2020 CENSUS	43,087	221,506	462,383
2024 ESTIMATED	52,096	246,921	492,349
2029 PROJECTED	61,200	271,865	526,500

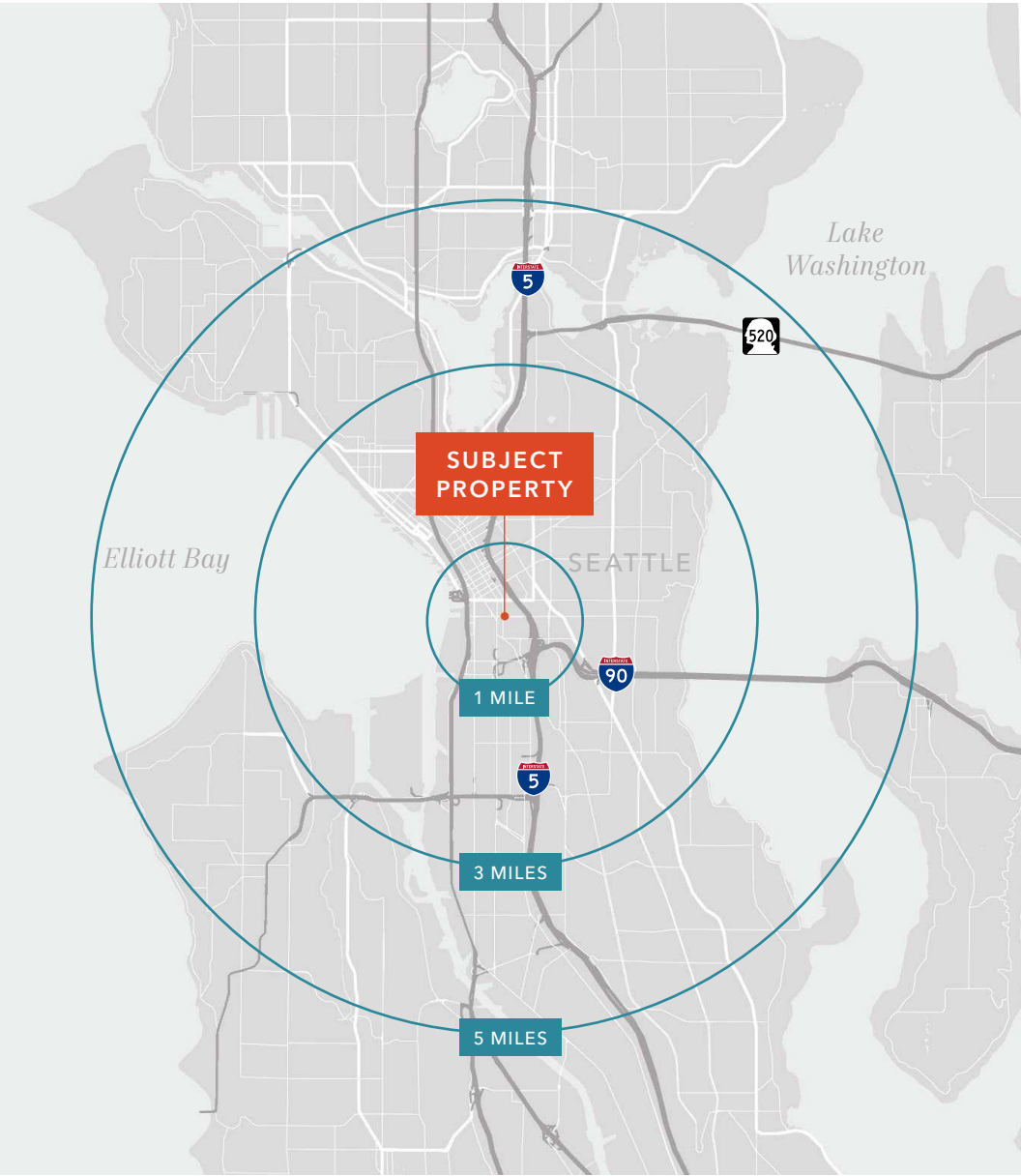
MEDIAN AGE & GENDER

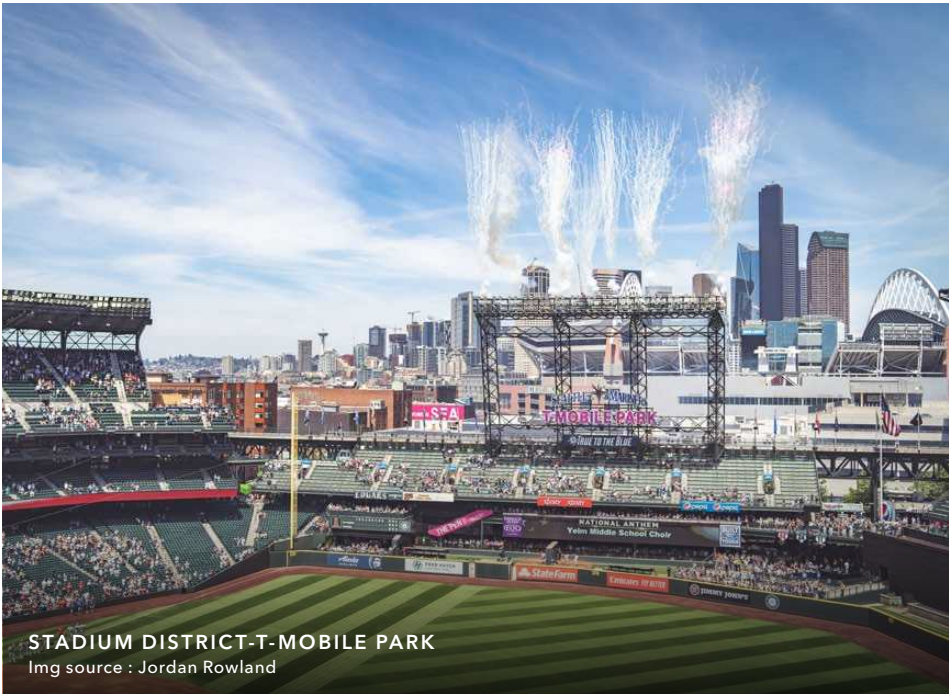
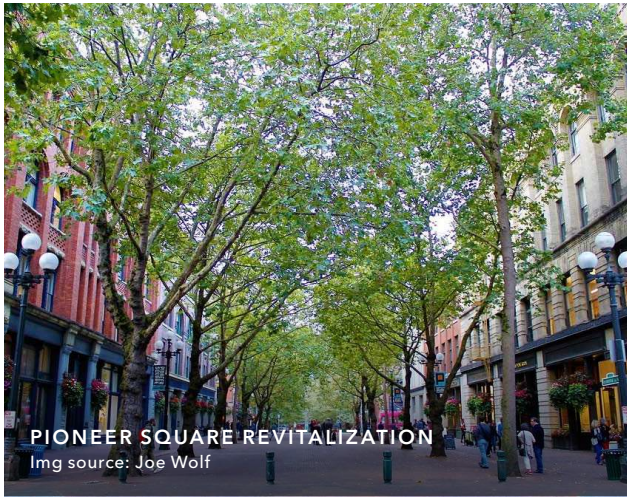
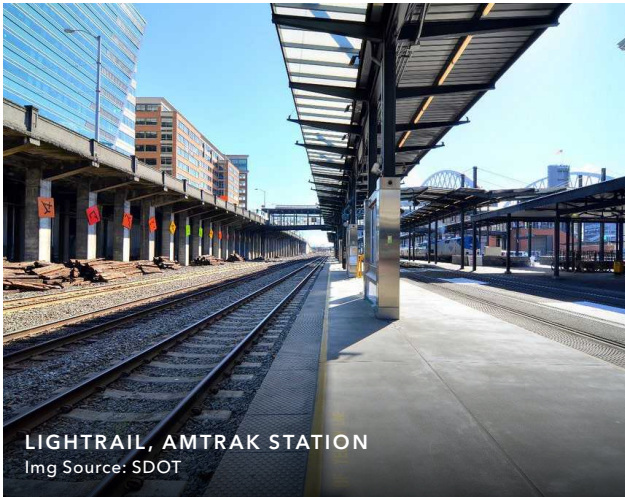
	1 Mile	3 Miles	5 Miles
MEDIAN AGE	33.9	35	35.2
FEMALE	40.3%	44.9%	46.0%
MALE	59.7%	55.1%	54.0%

HOUSEHOLD INCOME

	1 Mile	3 Miles	5 Miles
2024 MEDIAN	\$96,464	\$128,164	\$131,759
2029 MEDIAN PROJECTED	\$145,071	\$190,383	\$194,853
2024 AVERAGE	\$139,580	\$181,172	\$186,578
2029 AVERAGE PROJECTED	\$145,071	\$190,383	\$194,853

Data Source: ©2024, Sites USA







THE BUTY BUILDING

*For more information about
this property, please contact*

MIKE YEH

425.532.6370

mike.yeh@kidder.com

KIDDER.COM

This information supplied herein is from sources we deem reliable. It is provided without any representation, warranty, or guarantee, expressed or implied as to its accuracy. Prospective Buyer or Tenant should conduct an independent investigation and verification of all matters deemed to be material, including, but not limited to, statements of income and expenses. Consult your attorney, accountant, or other professional advisor. All Kidder Mathews designs are the sole property of Kidder Mathews. Branded materials and layouts are not authorized for use by any other firm or person.

