

Port Manufacturing Center

1510 St. Paul Ave, Tacoma, Washington



AVAILABLE MARCH 1, 2026

52,116 Rentable Square Feet



COMMERCIAL REAL ESTATE SERVICES
NORTHWEST LOGISTICS ADVISORS

Billy Moultrie
Principal
D 253.444.3022

Andrew Hull
Principal
D 253.444.3023

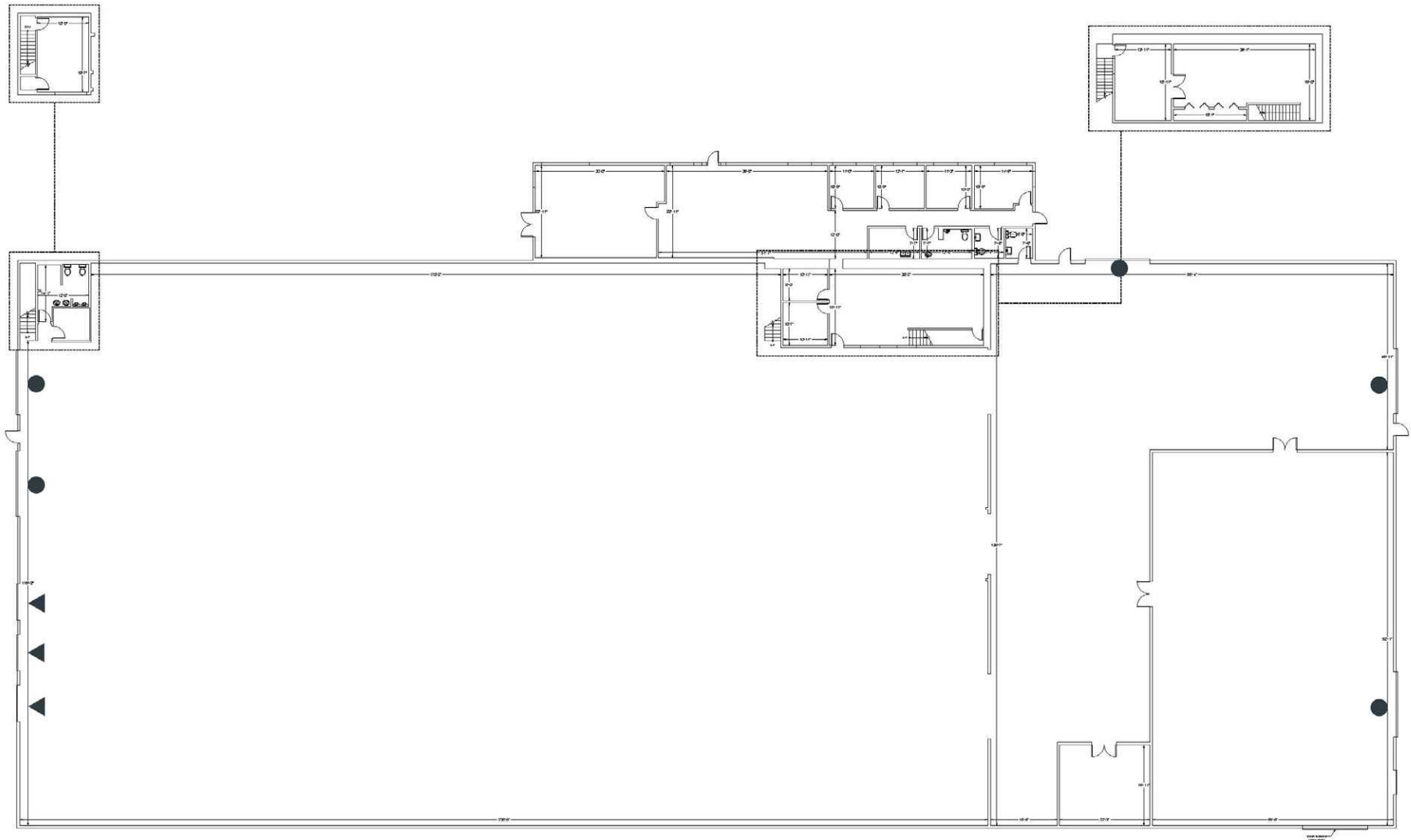
Christian Mattson, SIOR
Principal
D 253.444.3021



- 3 1,600 amps of 277/480 volt power
- 3 Power drops throughout the warehouse
- 3 Three operational paint booths and specialized paint storage room
- 3 Available March 1, 2026
- 3 Onsite rail spur offers import and export advantages
- 3 Prime location in the Port of Tacoma with close proximity to freeways

| | |
|------------------|-----------------------------------------|
| Building Size | 52,116 RSF |
| Office Size | 5,572 SF |
| Loading | Six (6) - 12' x 16' Grade Level Doors |
| | Three (3) - Dock High Doors |
| | Two (2) - Rail Doors |
| Clear Height | 21' - 24' |
| Zoning | PMI (Port Maritime Industrial) |
| Heavy Power | 1,600 amps of 277/480 volt |
| Fire Suppression | Combination of wet and dry system |
| Yard Area | Approx. 8,000 SF of side yard / parking |
| Auto Parking | Ample |

FLOOR PLAN - 52,116 SF



- GRADE LEVEL DOOR
- ▲ DOCK HIGH DOOR

LOCATION FEATURES

IDEAL LOCATION

PMC has unmatched location advantages sitting within the Port of Tacoma proper, with proximity to freeways, intermodals, Downtown Seattle and Seattle-Tacoma International Airport.

PORT MARITIME AND INDUSTRIAL (PMI) ZONING

PMI Zoning is one of, if not the most permissible zones in the Port of Tacoma, allowing for wholesale distribution, container and trailer storage, yard uses, manufacturing, and other uses.

HEAVY HAUL CORRIDOR LOCATION

St. Paul Avenue is part of the City of Tacoma's Heavy Haul Industrial Corridor, accommodating vehicles in excess of legal weight limits with a special permit.

RAILCAR SERVICE POTENTIAL

Port location and onsite rail spur service offer import and export transportation advantages.

CLASS 1 RAILROADS

BNSF and Union Pacific provide fast, transcontinental services, connecting the Pacific Northwest across America. This includes three-day service to Chicago and more than 50 departures per week.



CONTACT:

Billy Moultrie

Principal

D 253.444.3022

Andrew Hull

Principal

D 253.444.3023

Christian Mattson, SIOR

Principal

D 253.444.3021