

# CENTRE COURT OFFICE SPACE

116 WARREN AVE N, SUITE A  
SEATTLE, WA



*3,000 - 4,345 SF Available For Lease in Queen Anne*

Transit stop within a block of office

Private entry

Six free covered parking stalls

Nine private offices

Two conference rooms

Three restrooms and a shower

Full kitchen

Rooftop deck with a view

*For more leasing  
information contact*

**KEN HIRATA**  
Senior Vice President  
206.296.9625  
ken.hirata@kidder.com

**TODD BATTISON**  
Senior Vice President  
206.296.9621  
todd.battison@kidder.com

**KIDDER.COM**

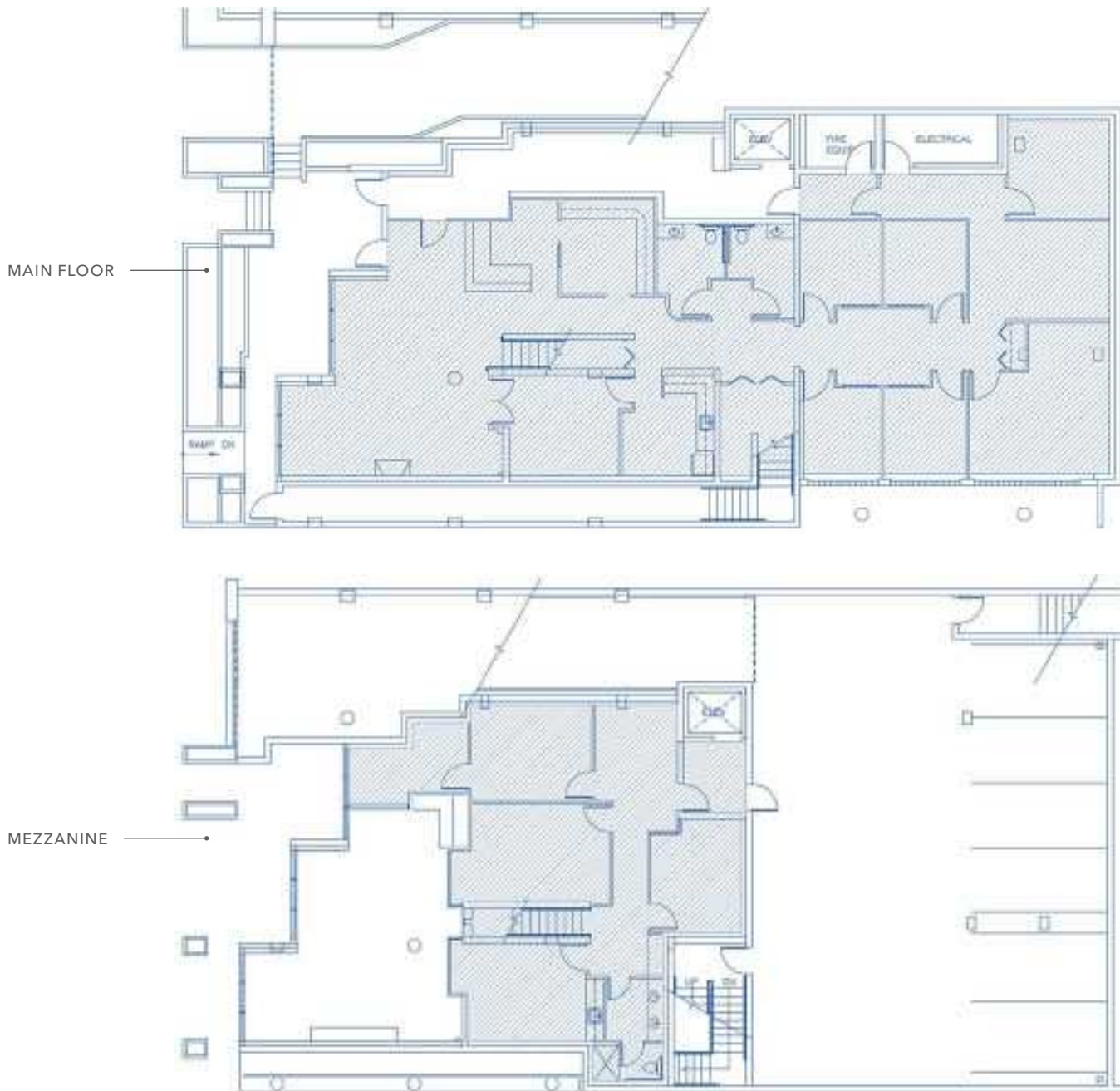
This information supplied herein is from sources we deem reliable. It is provided without any representation, warranty, or guarantee, expressed or implied as to its accuracy. Prospective Buyer or Tenant should conduct an independent investigation and verification of all matters deemed to be material, including, but not limited to, statements of income and expenses. Consult your attorney, accountant, or other professional advisor.







## FLOOR PLANS



**\$28.00**

RENTAL RATE (SF/FULL SERVICE GROSS)

**NOW**

AVAILABLE

[KIDDER.COM](http://KIDDER.COM)

This information supplied herein is from sources we deem reliable. It is provided without any representation, warranty, or guarantee, expressed or implied as to its accuracy. Prospective Buyer or Tenant should conduct an independent investigation and verification of all matters deemed to be material, including, but not limited to, statements of income and expenses. Consult your attorney, accountant, or other professional advisor.



# CENTRE COURT



KIDDER.COM

This information supplied herein is from sources we deem reliable. It is provided without any representation, warranty, or guarantee, expressed or implied as to its accuracy. Prospective Buyer or Tenant should conduct an independent investigation and verification of all matters deemed to be material, including, but not limited to, statements of income and expenses. Consult your attorney, accountant, or other professional advisor.