





ELEVATE YOUR WORKPLACE IN SOUTH LAKE UNION

Experience premier Class A office space designed for efficiency and productivity in the heart of South Lake Union.

Located just steps from the South Lake Union waterfront and park, the Dexter biomedical corridor, and Seattle's technology and nonprofit innovation hub.

Enjoy spectacular views of Lake Union and Downtown Seattle, along with easy connectivity to I-5 and Highway 99. The newly updated building lobby welcomes employees and guests, while thoughtful amenities enhance work-life balance.

Position your business for success in a dynamic and thriving community.



BUILDING HIGHLIGHTS



Class A office space with efficient, modern layouts



Prime South Lake Union location near major tech employers



Secured indoor parking: 2.7/1,000



Convenient access to I-5 and Highway 99



On-site showers, lockers, and bike storage



Landscaped outdoor decks and welcoming plaza





IN-PROGRESS BUILDING RENOVATIONS

Renovations are expected to be completed in Q3 2025

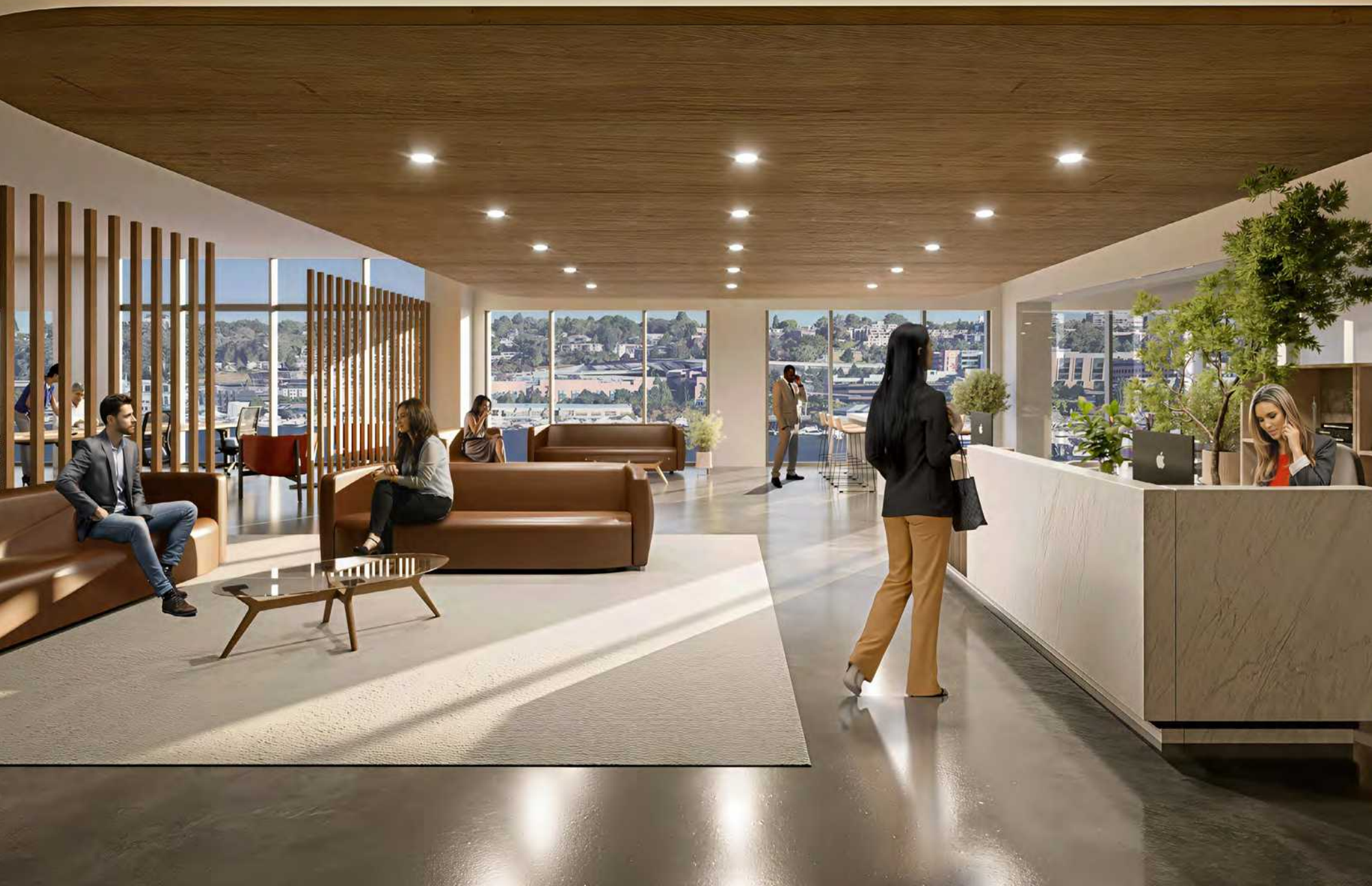
- **Exclusive Tenant Lounge** – A stylish, hospitality-driven space designed for community, conversation, and focused work.
- **Reimagined Lobbies** – Warm, inviting lobbies with enhanced seating and a refined aesthetic to create a welcoming first impression.
- **Modern Co-Working Spaces** – Flexible, ownership-controlled workspace designed to support expansion, swing space, and long-term growth, in partnership with Industrious.
- **State-of-the-Art Training & Conferencing** – A multi-functional center accommodating 40-50 guests, complete with a dedicated pre-function space.
- **Premium Fitness Center** – Featuring high-end cardio and strength equipment, Peloton bikes, TRX, rowers, and dedicated stretching zones.
- **Upgraded Shower Facilities** – Additional bathrooms and enhanced shower amenities to complement the fitness experience.
- **Revitalized Outdoor Courtyard** – A dynamic year-round retreat with wood decking, cozy seating, dining areas, heaters, and a stand-alone kiosk featuring curated food & beverage options.



Dexter Landing Tenant Lounge



4th Floor Office Concept





Revitalized Outdoor Courtyard



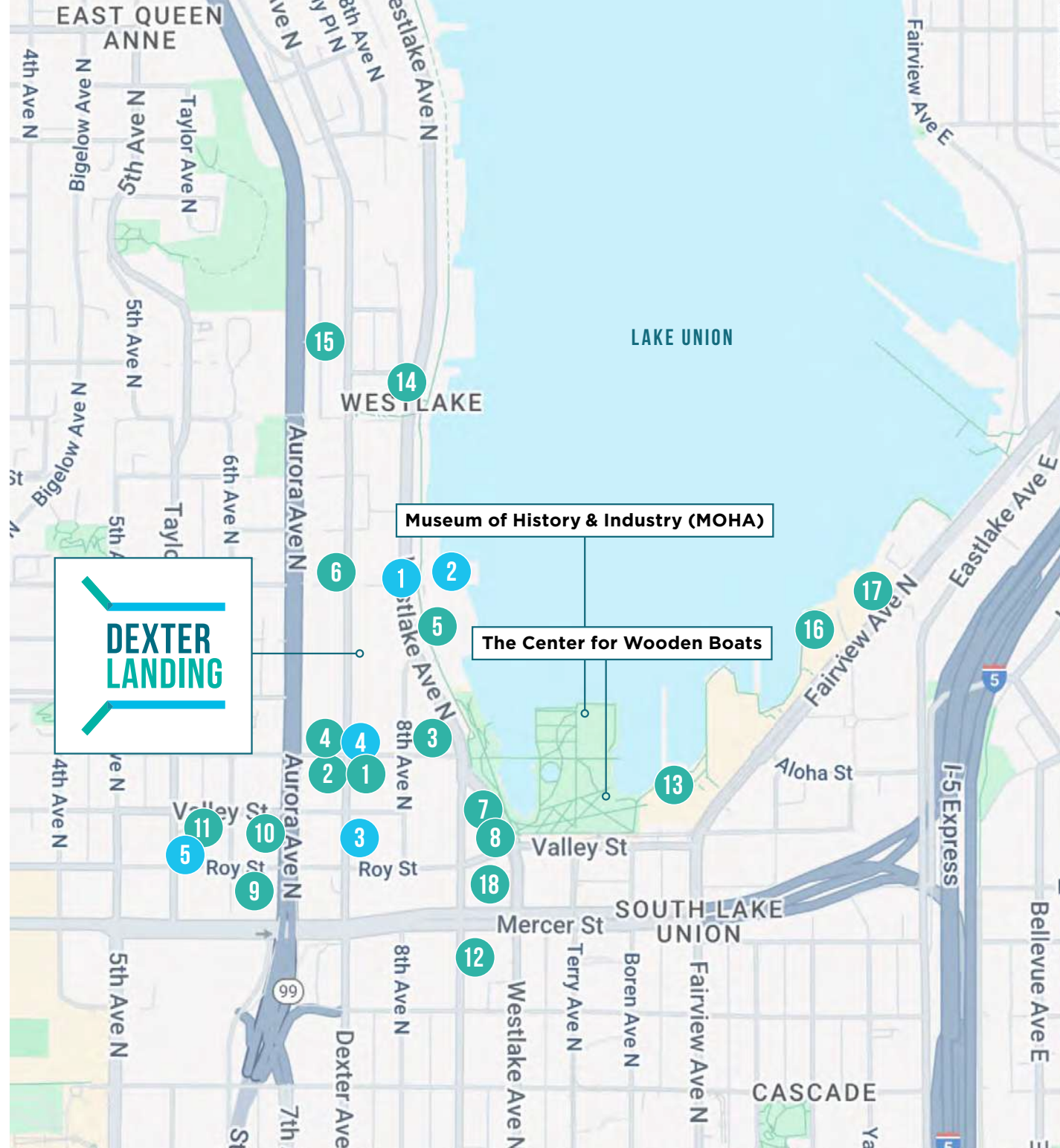
VARIETY OF LOCAL FOOD & DRINK OPTIONS

COFFEE

1. Caffè Umbria
2. Starbucks
3. Café Hagen - Dexter
4. TOASTED. Bagels & Coffee
5. Citizen Collective

FOOD

1. Tacos Chukis
2. tanoor Seattle
3. Bistro
4. Stone Korean Restaurant
5. El Mirador Taco Truck
6. Gyro & More
7. A Pizza Mart
8. Buca di Beppo Italian Restaurant
9. Fireside Cafe
10. Pagliacci Pizza
11. TERIKING
12. La Palmera Mexican Restaurant
13. Daniel's Broiler
14. Mother India Cuisine
15. Chennai Express Authentic Indian
16. The White Swan Public House
17. Duke's Seafood South Lake Union
18. Flatstick Pub - South Lake Union



CURRENT AVAILABILITIES

Dexter Landing North – 1100 Dexter

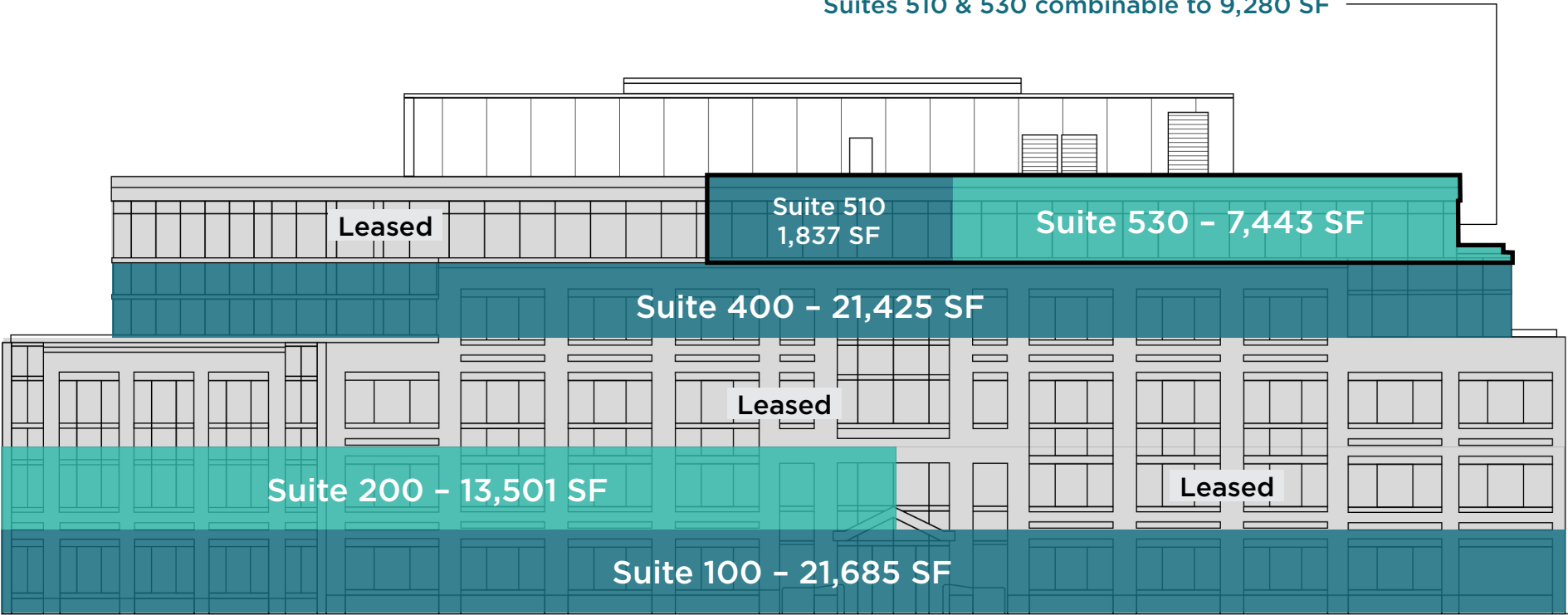


Floor 2 suites combinable to 24,028 SF

CURRENT AVAILABILITIES

Dexter Landing South – 1000 Dexter

Suites 510 & 530 combinable to 9,280 SF



FLOOR 2 PLAN

Suite 200	2,629 SF	Lease Pending	▶
Suite 210	10,463 SF	Available Now	▶
Suite 250	7,100 SF	Available Now	▶
Suite 275	3,836 SF	Available Now	▶
Floor 2	24,028 SF	Available Now	



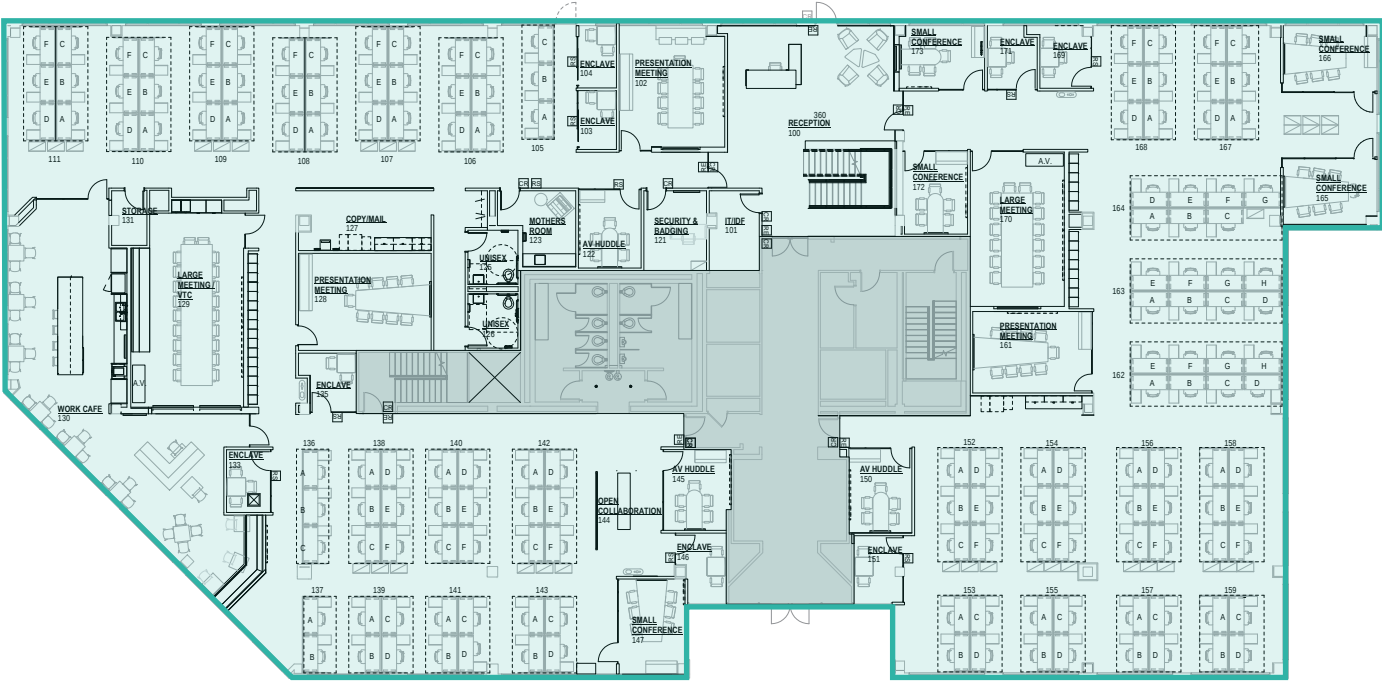
FLOOR 1 PLAN

Suite 100

21,685 SF

Available Now

Recently built-out tech space with
plug & play furniture and finishes.



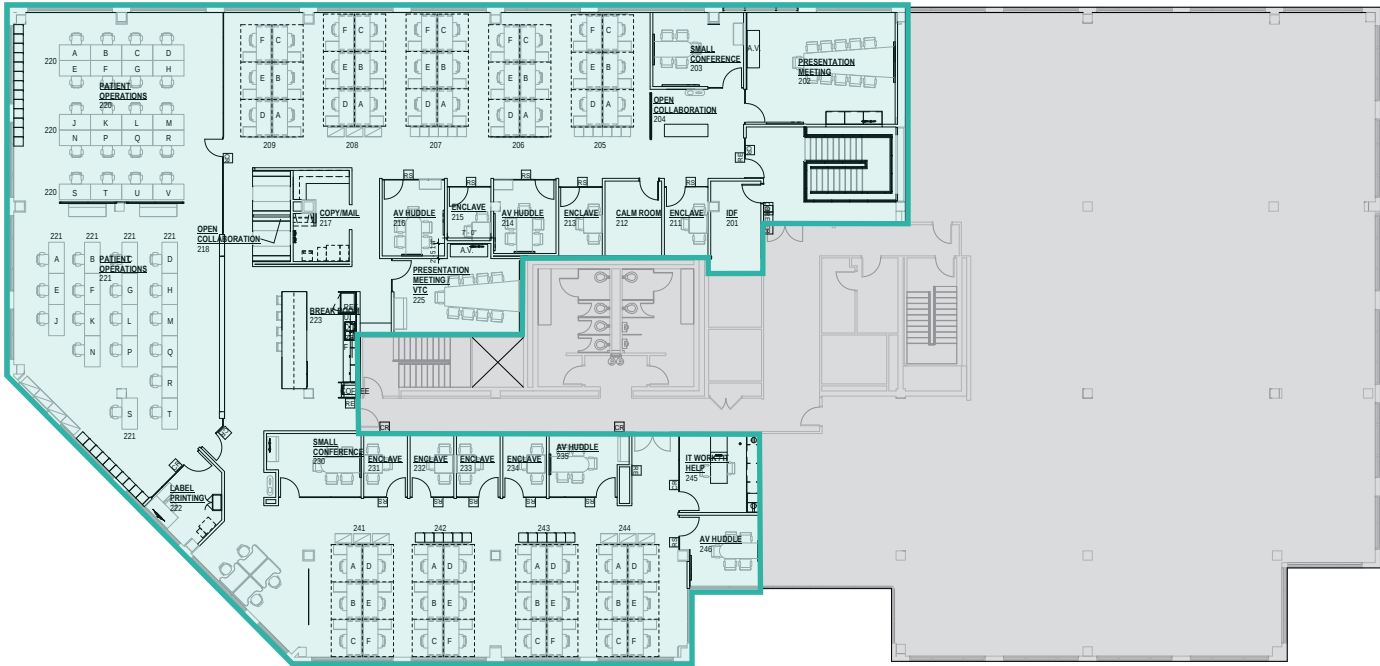
FLOOR 2 PLAN

Suite 200

13,501 SF

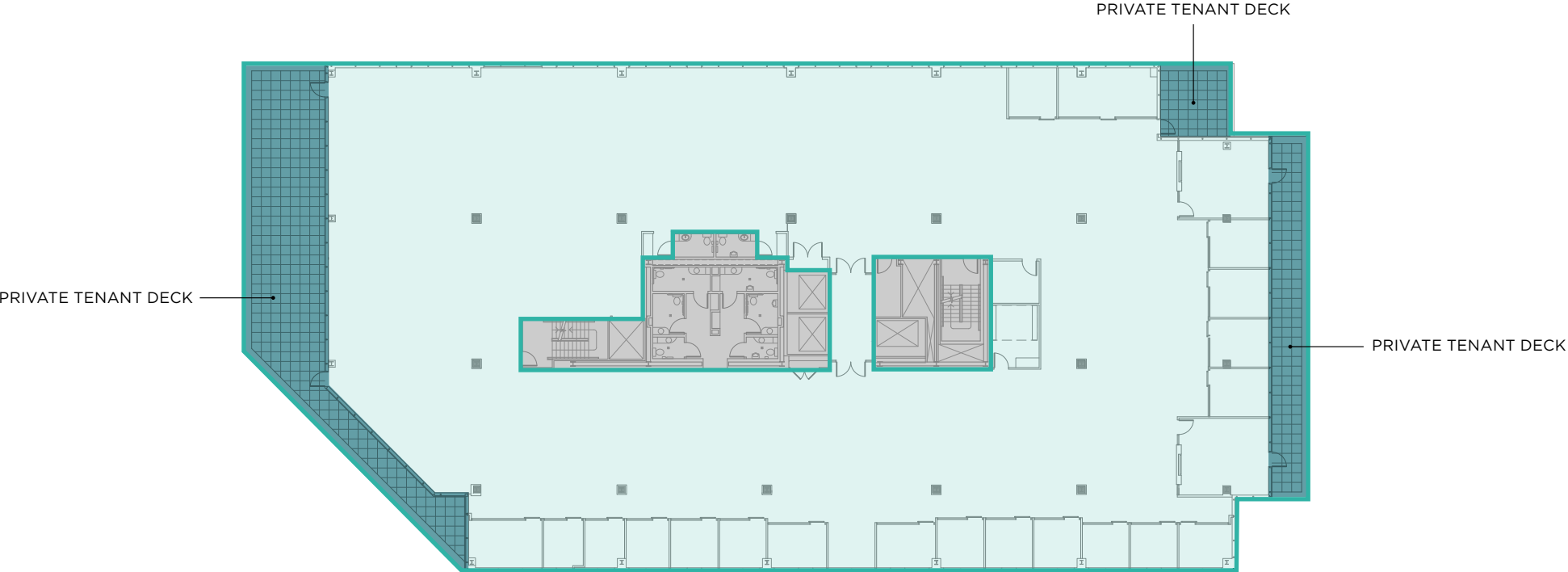
Available Now

Recently built-out tech space with
plug & play furniture and finishes.



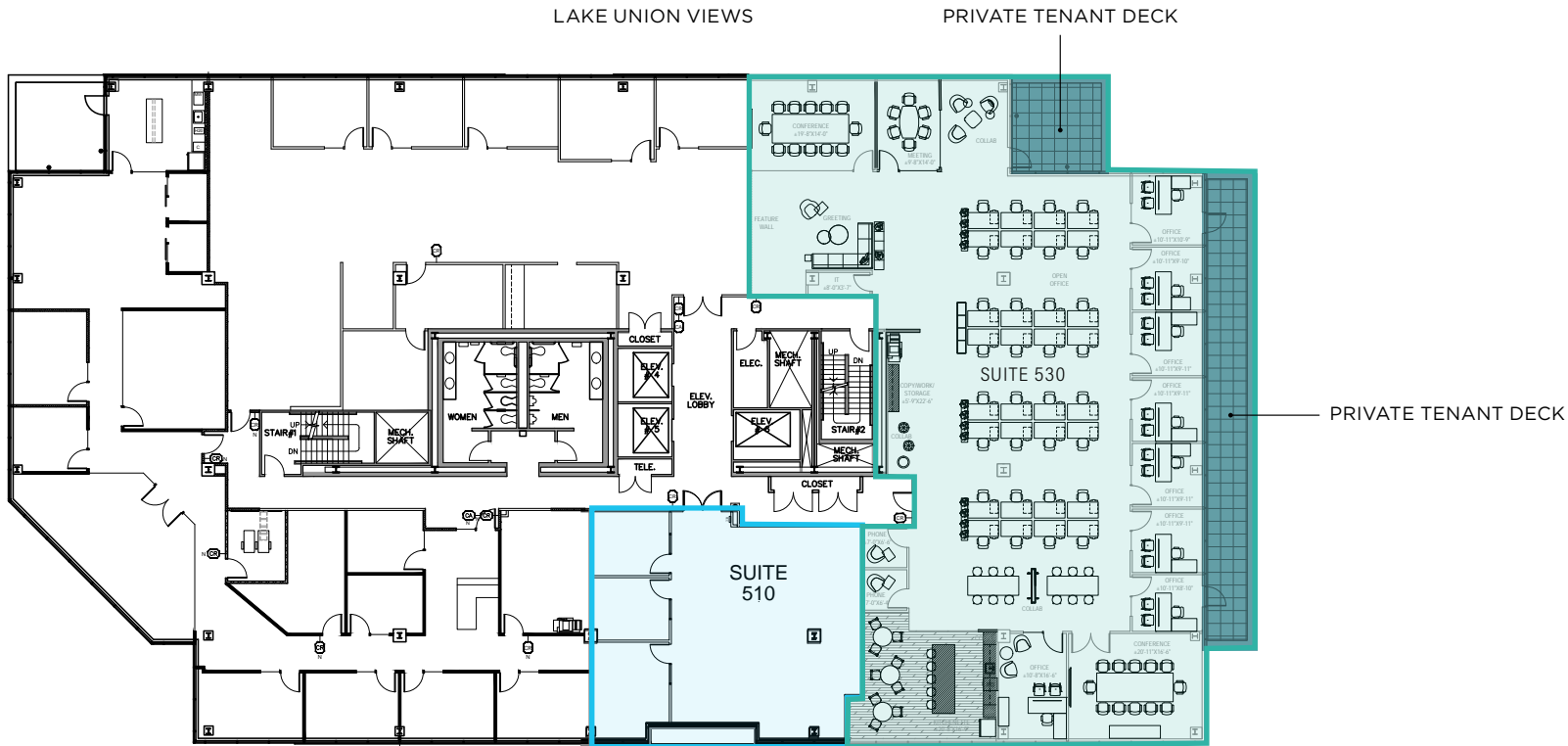


FLOOR 4 PLAN



FLOOR 5 PLAN

Suite 510	1,837 SF	Available Now	Spec Suite
Suite 530	7,443 SF	Lease Pending	Newly built-out spec space with furniture.
Suites 510 & 530 Combinable to 9,280 SF			



DEXTER LANDING

WWW.DEXTERLANDING.COM

1000 & 1100 Dexter Ave N
Seattle, WA 98109

For more information contact

Cavan O'Keefe

Senior Managing Director
206.395.2903
cavan.okeefe@nrmk.com

Jesse Ottele

Executive Managing Director
206.452.4529
jesse.ottele@nrmk.com

Tracy Turnure

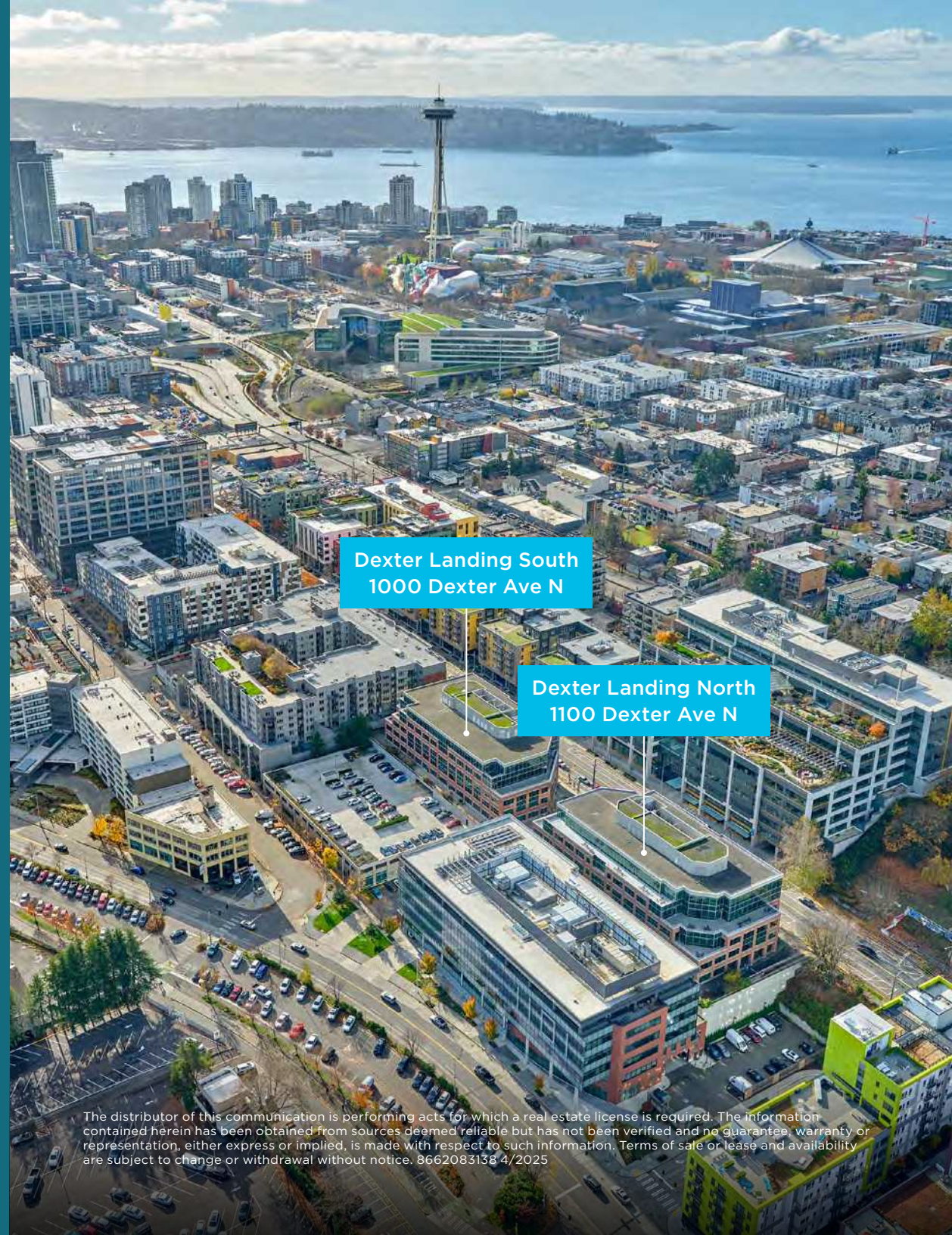
Associate
425.372.9923
tracy.turnure@nrmk.com

 PALISADE

 SABAL
INVESTMENT HOLDINGS

 CRESTLIGHT
CAPITAL

NEWMARK



The distributor of this communication is performing acts for which a real estate license is required. The information contained herein has been obtained from sources deemed reliable but has not been verified and no guarantee, warranty or representation, either express or implied, is made with respect to such information. Terms of sale or lease and availability are subject to change or withdrawal without notice. 8662083138 4/2025