

Your Name Here



JLL SEE A BRIGHTER WAY

For lease

Andover East Business Center, Building A

Available Immediately

1073 Andover Park E
Tukwila, WA

Property specifications

- 5,200 SF total available
- 953 SF office
- 16' clear height
- 2 dock-high overhead doors
- 39/5600 wet sprinkler system
- 100' bay depth
- 20' x 52' column spacing
- 128' truck court
- located on major N/A arterial, connecting I-405 & immediate access to I-5
- Just minutes from SeaTac Int. Airport
- Close to Southcenter Mall and abundant amenities

Les Boudwin, SIOR
Managing Director
les.boudwin@jll.com
+1 206 679 6393

Scott Carter
Managing Director
scott.carter@jll.com
+1 425 761 5880

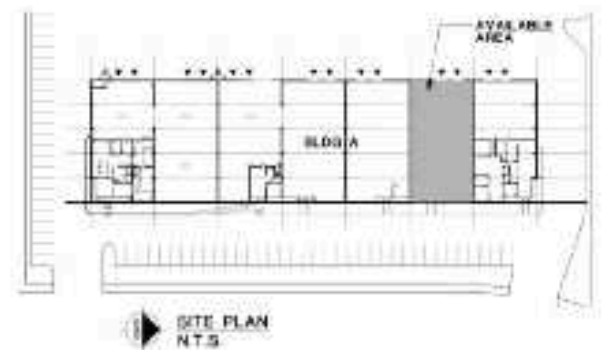
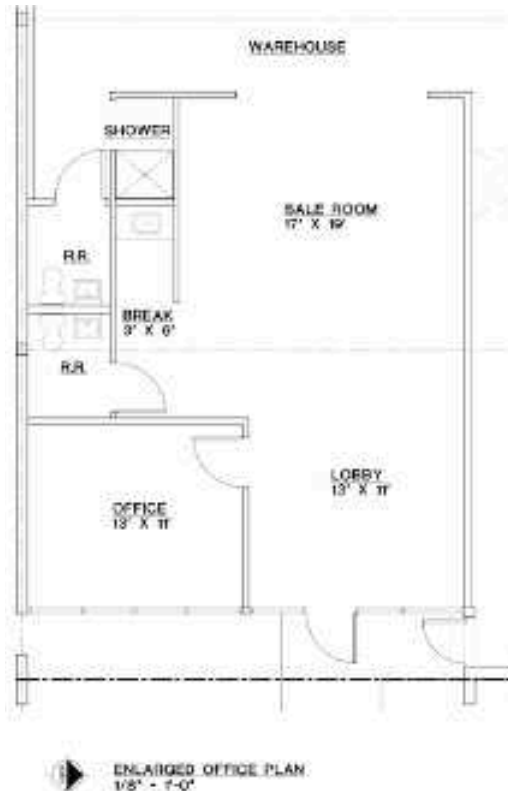
jll.com

Jones Lang LaSalle Brokerage, Inc.

For lease

Andover East Business Center, Building A

1073 Andover Park E, Tukwila, WA



AVAILABLE BUILDING AREA

953 SQ. FT. OFFICE

4,247 SQ. FT. WAREHOUSE

5,200 SQ. FT. TOTAL

LEGEND

▼ DOCK-HIGH OVERHEAD DOORS

● RAIL DOORS

Les Boudwin, SIOR
les.boudwin@jll.com
+1 206 679 6393

Scott Carter
scott.carter@jll.com
+1 425 761 5880

jll.com
Jones Lang LaSalle Brokerage, Inc.



**Andover East Business
Center, Building A**