



A photograph of a modern, multi-story residential building with a prominent corner bay window and a red-tiled roof. The building is surrounded by trees and streetlights. The text 'WOODIN CREEK VILLAGE' is overlaid in large white letters at the bottom.

# WOODIN CREEK VILLAGE

17300 135TH AVE NE | WOODINVILLE, WA 98072





**17300 135TH AVE NE**  
**WOODINVILLE, WA 98072**

**1,427 - 10,508 SF**

PREMIER RETAIL SPACES AVAILABLE  
EXISTING + PHASE VI

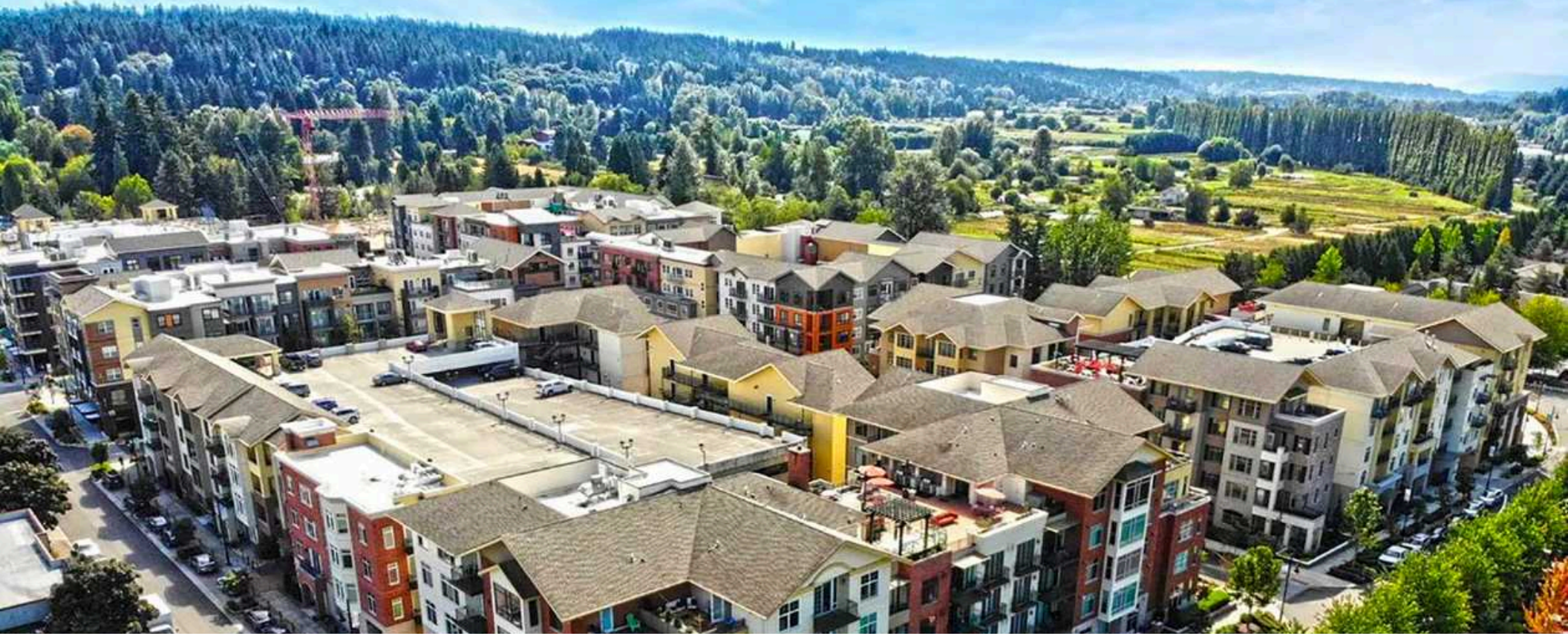
**\$43.00**

PER SQUARE FOOT

**\$15.00**

NNN PER SQUARE FOOT





**13k**  
TOTAL  
POPULATION

**16k**  
DAYTIME  
POPULATION

**\$200k**  
AVG. HOUSEHOLD  
INCOME

**1.3k**  
BUSINESSES

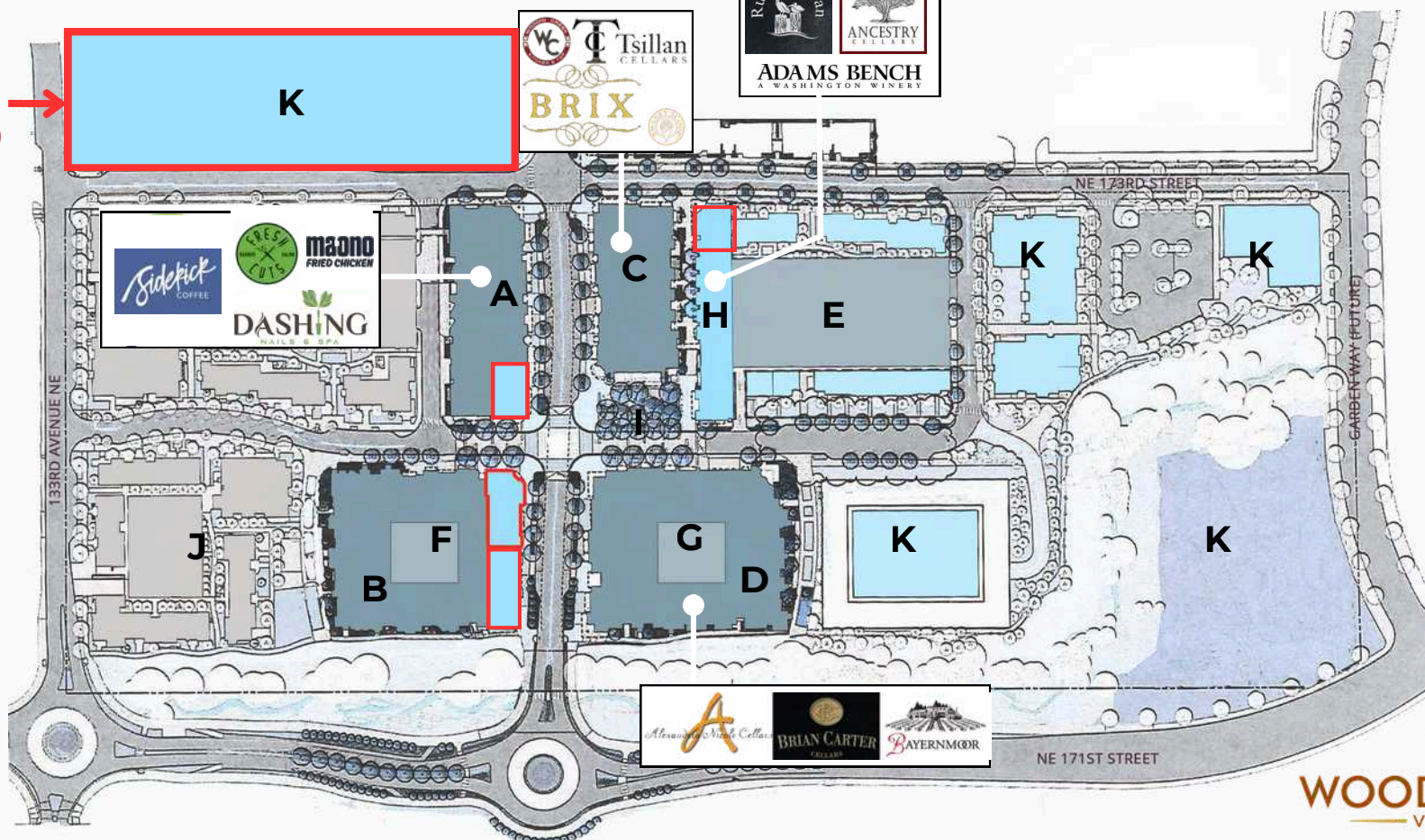
**86%**  
ADULTS WITH  
COLLEGE EDUCATION

**13k**  
EMPLOYEES

\*2024 PROJECTIONS FOR WOODINVILLE, WA. COLLECTED VIA SITESUSA



**PHASE VI**  
(UNDER CONSTRUCTION)



**WOODIN CREEK**  
VILLAGE

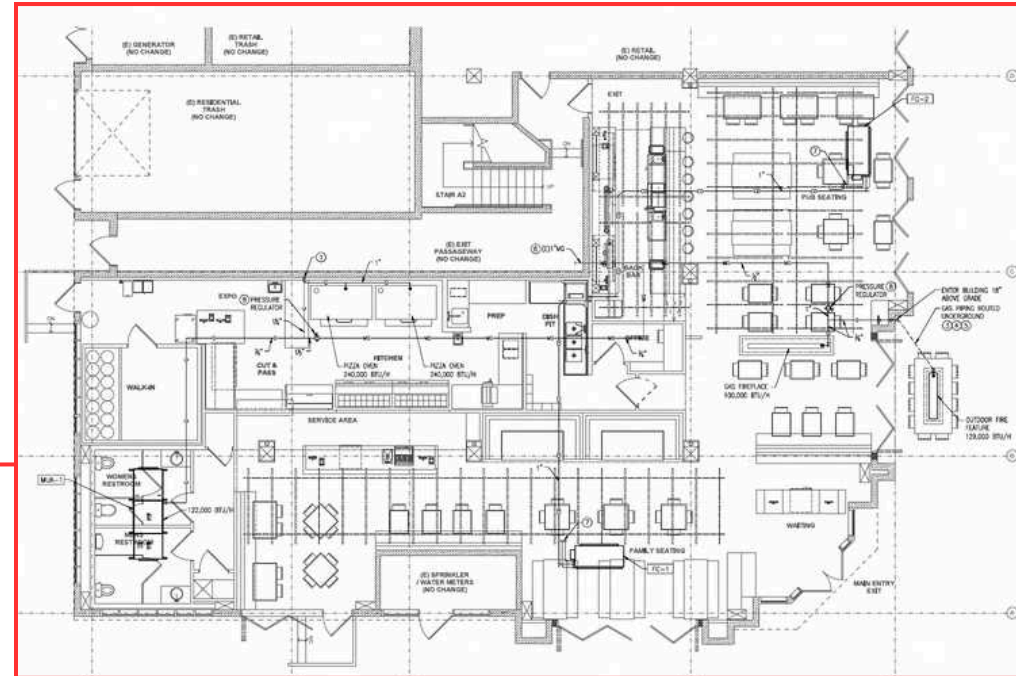
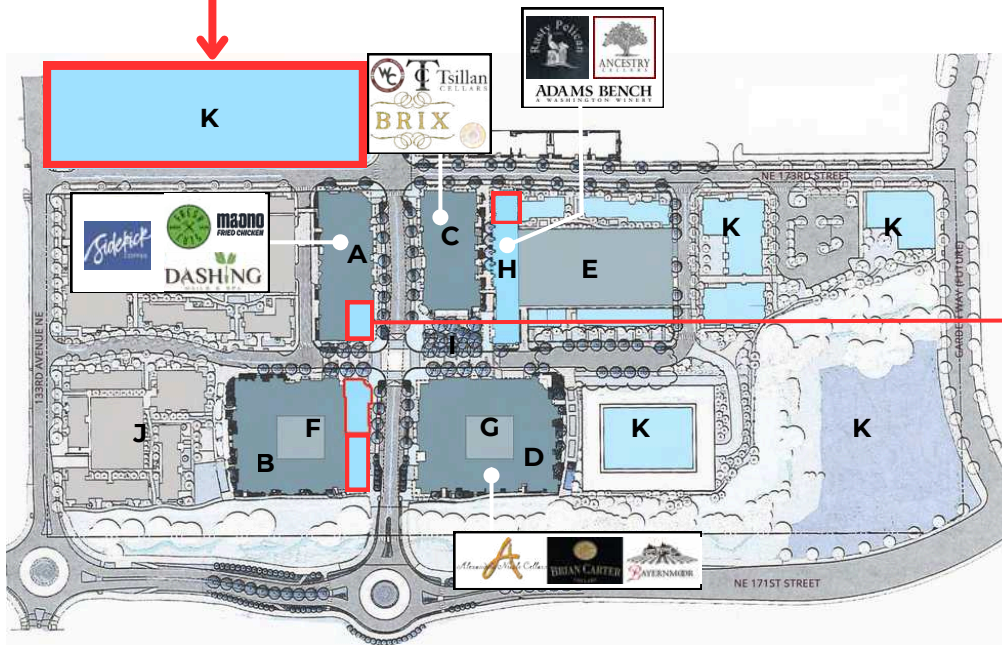
- Premier Location in Woodinville Wine District
- Close Proximity to Tasting Rooms, Restaurants, & More
- Located in Built-In Rental Neighborhood-Like Community
- Designated Retail Parking





**RETAIL A**

**PHASE VI**



**DOWNLOAD  
PLANS**

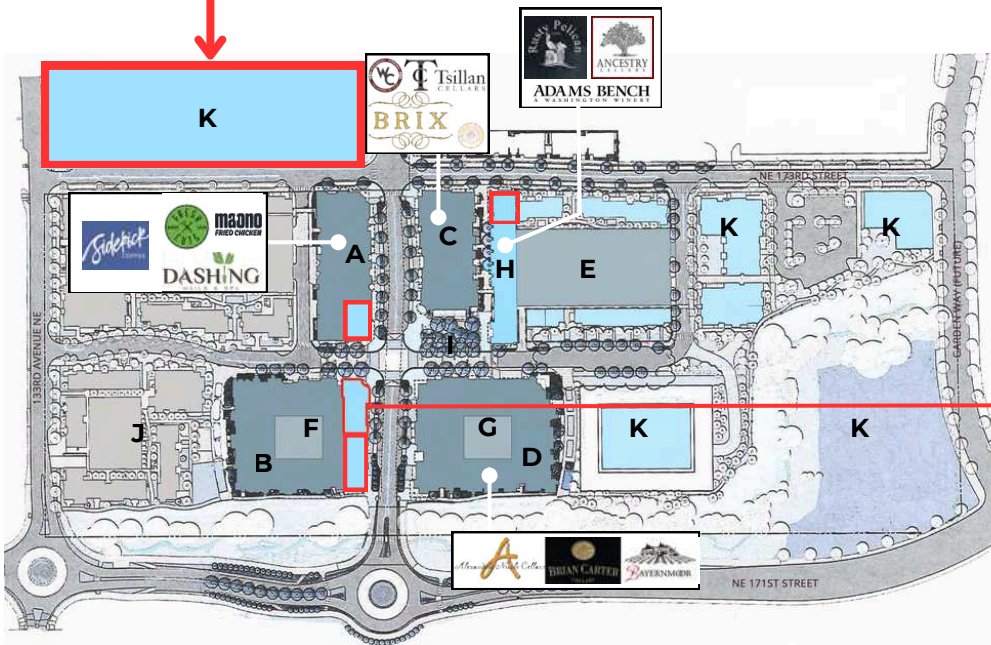
- 3,753 SF Available
- Built-Out Former Pizza Restaurant and Full Bar
- High Visibility End-Cap Location
- Located on Wine Walk with High Foot Traffic





**RETAIL B**

**PHASE VI**



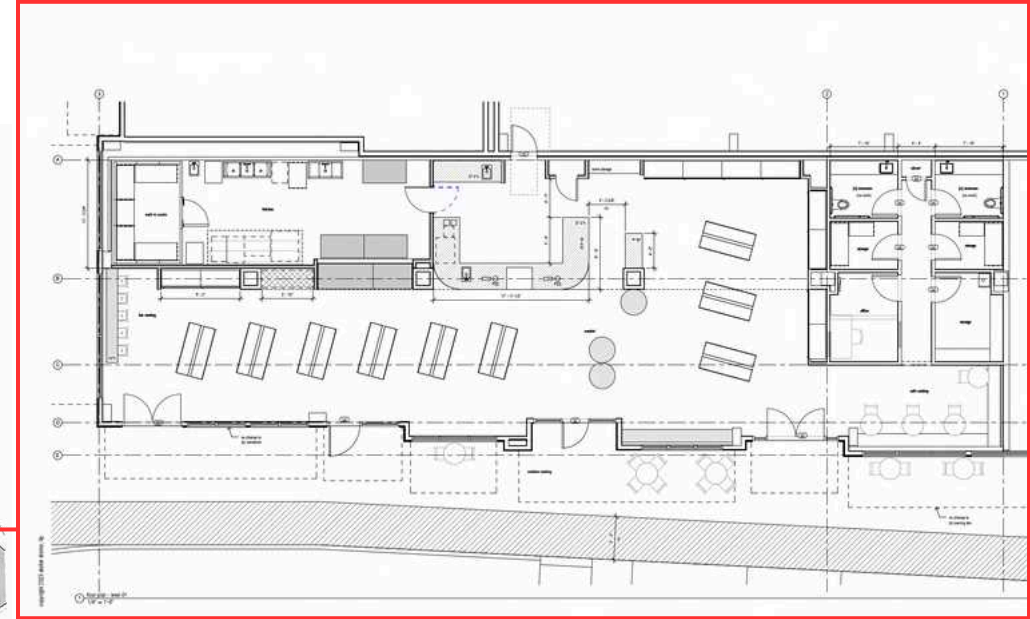
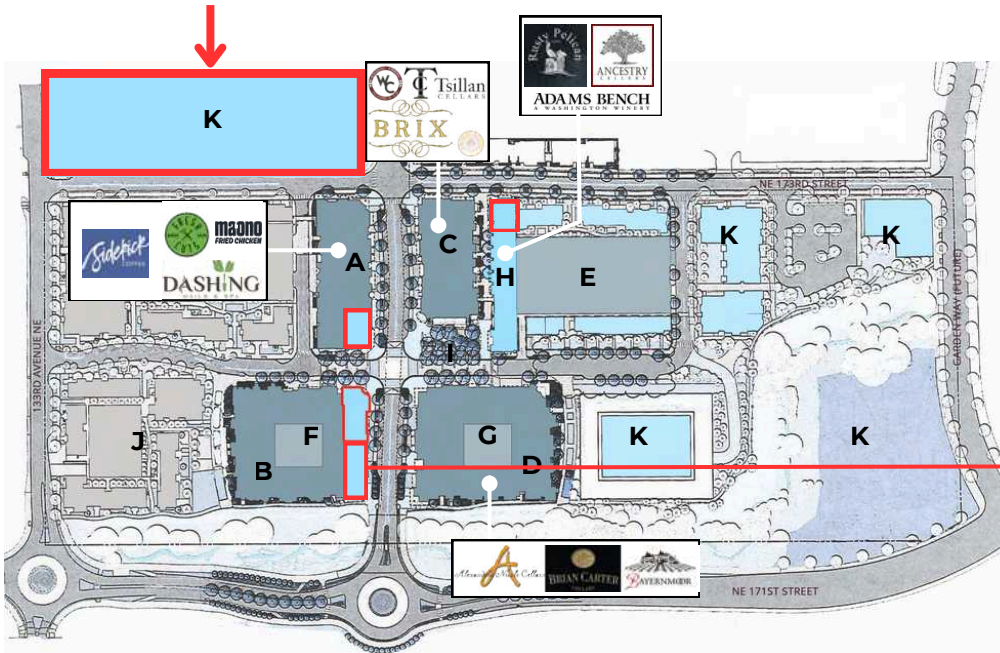
- 2,697 SF Available
- Existing Elevated Restaurant Space
- Outdoor Patio on Highly Visible Pedestrian Path
- Close Proximity to Parking





**RETAIL B**

**PHASE VI**



**DOWNLOAD  
PLANS**

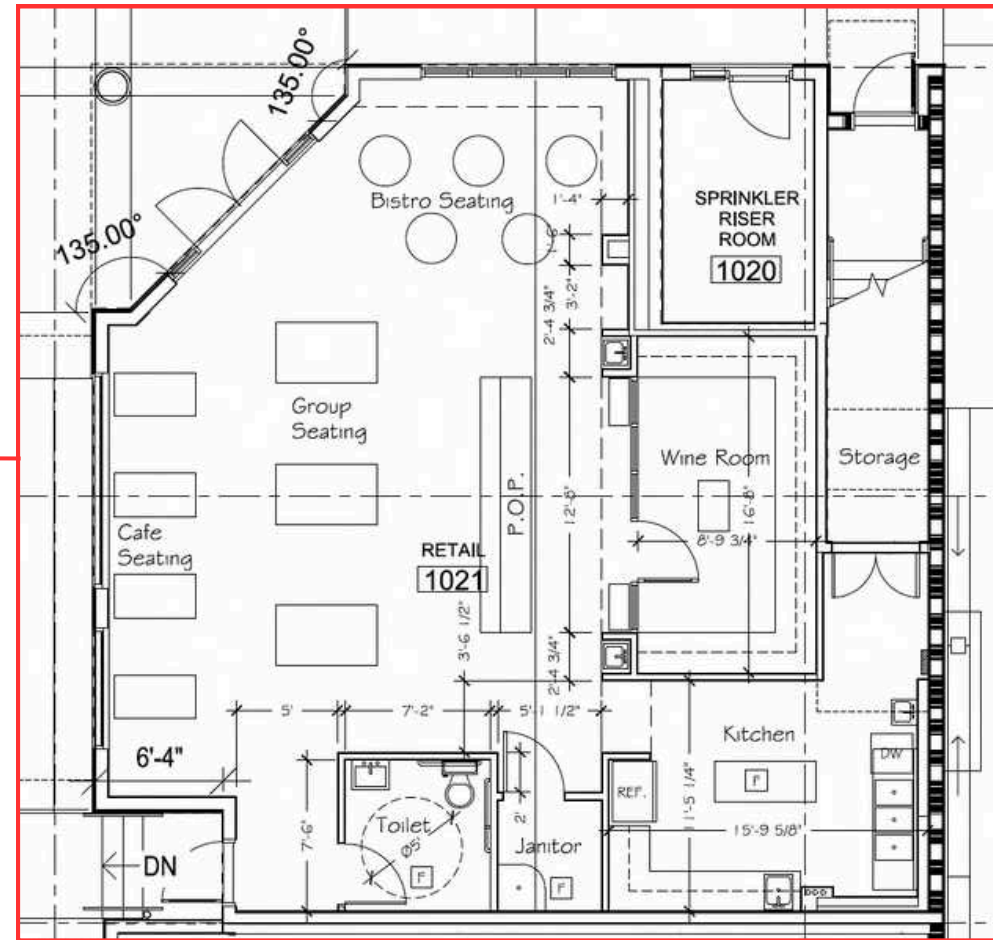
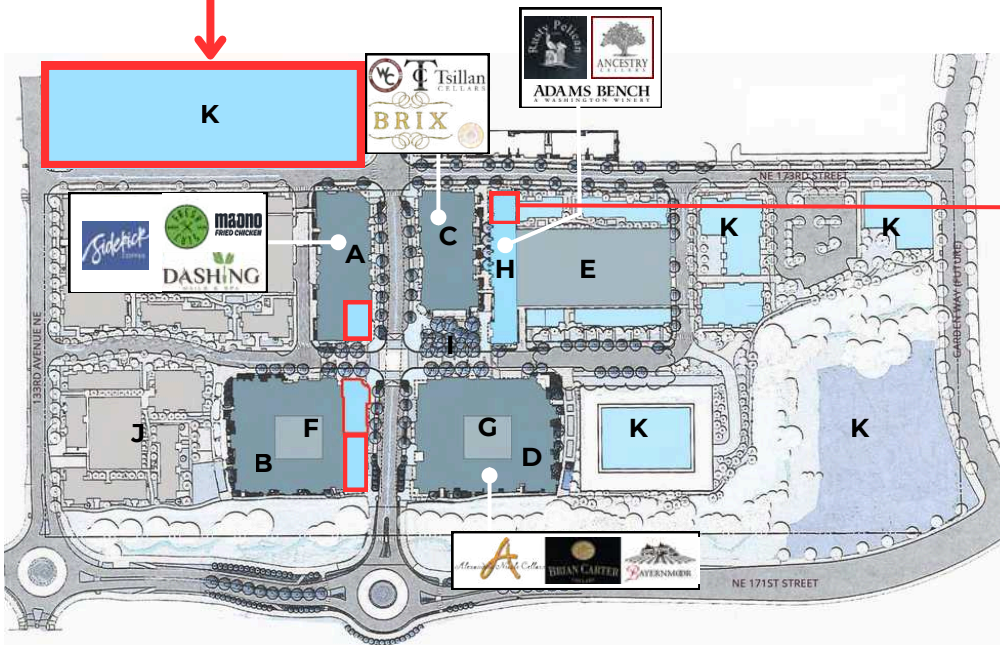
- 3,569 SF Available
- Existing Elevated Market Space Fully Built-Out
- High Visibility Storefront on Highly Visible Pedestrian Path
- Close Proximity to Parking





**RETAIL H**

**PHASE VI**



- 1,427 SF Available
- Built-Out Former High-End Tasting Room
- High Visibility End-Cap Location
- Located on Wine Walk with High Foot Traffic



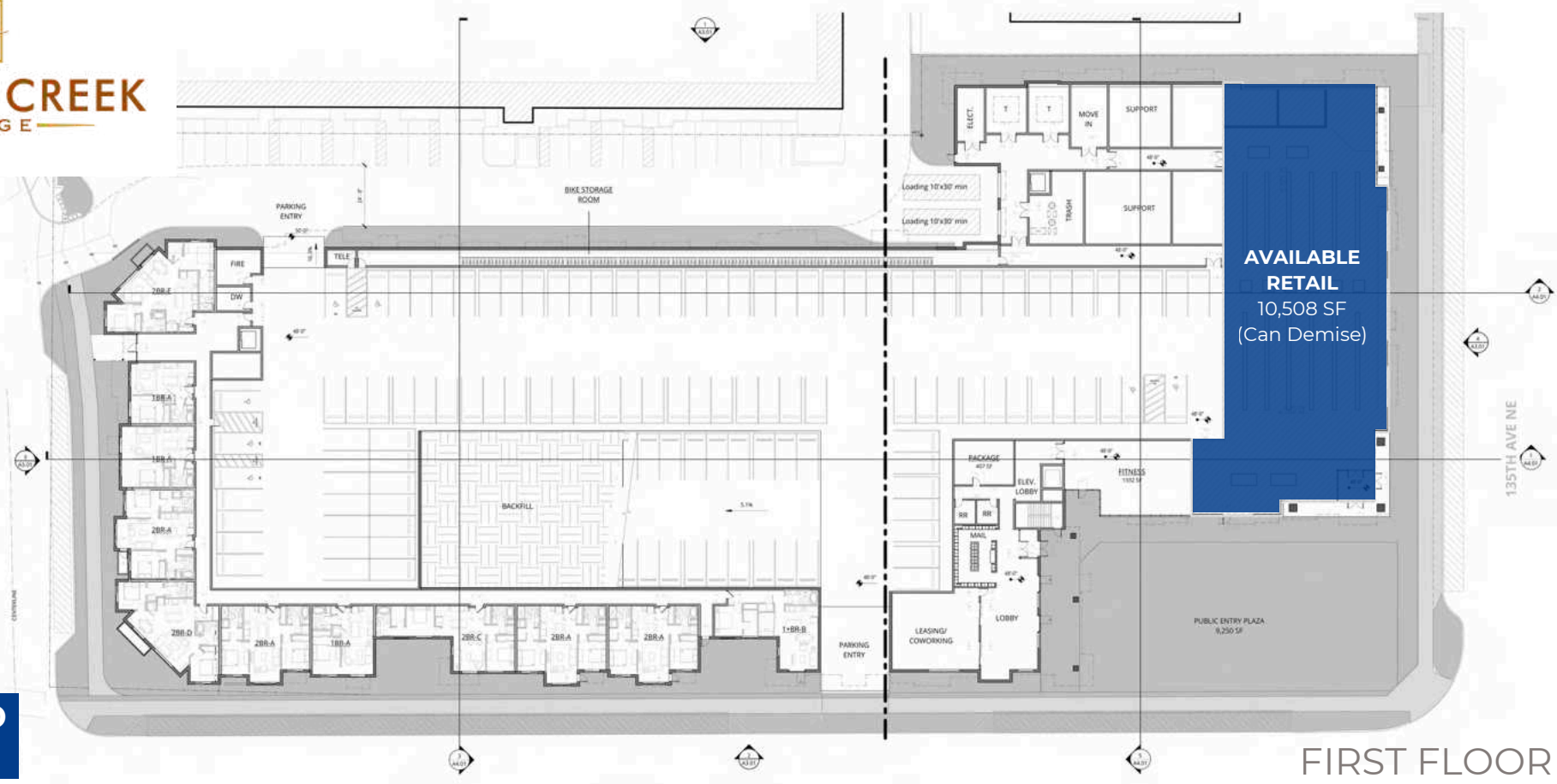




# WOODIN CREEK VILLAGE

## PHASE VI

DOWNLOAD  
PLANS



- Premier Location in Woodinville Wine District
- Close Proximity to Tasting Rooms, Restaurants, & more
- Located in built-in rental Neighborhood-Like Community
- 140 Dedicated Commercial Parking Stalls







**144k**  
NB+SB VPD



**95k**  
EB+WB VPD





## **RYAN CORNISH**

**SENIOR VICE PRESIDENT | PARTNER**  
**RYAN@PAADVISORS.COM**

**206.375.6142**

