

2107 S HOLGATE ST

SEATTLE, WA 98144

7,992 SF
TOTAL

RAINIER VALLEY BUILDING FOR LEASE



PROPERTY HIGHLIGHTS



Close-in
Seattle location



Quick access
to I-5/I-90



Minutes from two
light rail stations



Fully fenced



ED HOGAN
206.787.1477

ehogan@neilwalter.com

JOHN BLEDSOE
206.787.1460

jbledsoe@neilwalter.com

All information references in this document are approximate. The information contained herein is contained from sources deemed reliable. It is provided without representation, warranty, or guarantee, expressed or implied as to accuracy. Prospective buyer or tenant should conduct its own independent investigation relating to the property, government codes and regulations, allowed uses, and all other matters, regardless of whether they are referred to or contained in this document.

2107

S HOLGATE ST

SEATTLE, WA 98144



NEIL WALTER
COMPANY

PROPERTY INFO

Size:	7,992 SF Total
Office Size:	567 SF
Loading:	2 Grade-level doors 1 Dock-high door
Construction:	Steel frame, clear span
Clear Height:	21.5'
Available:	January 1, 2026
Lease Rate:	Call Broker



2107

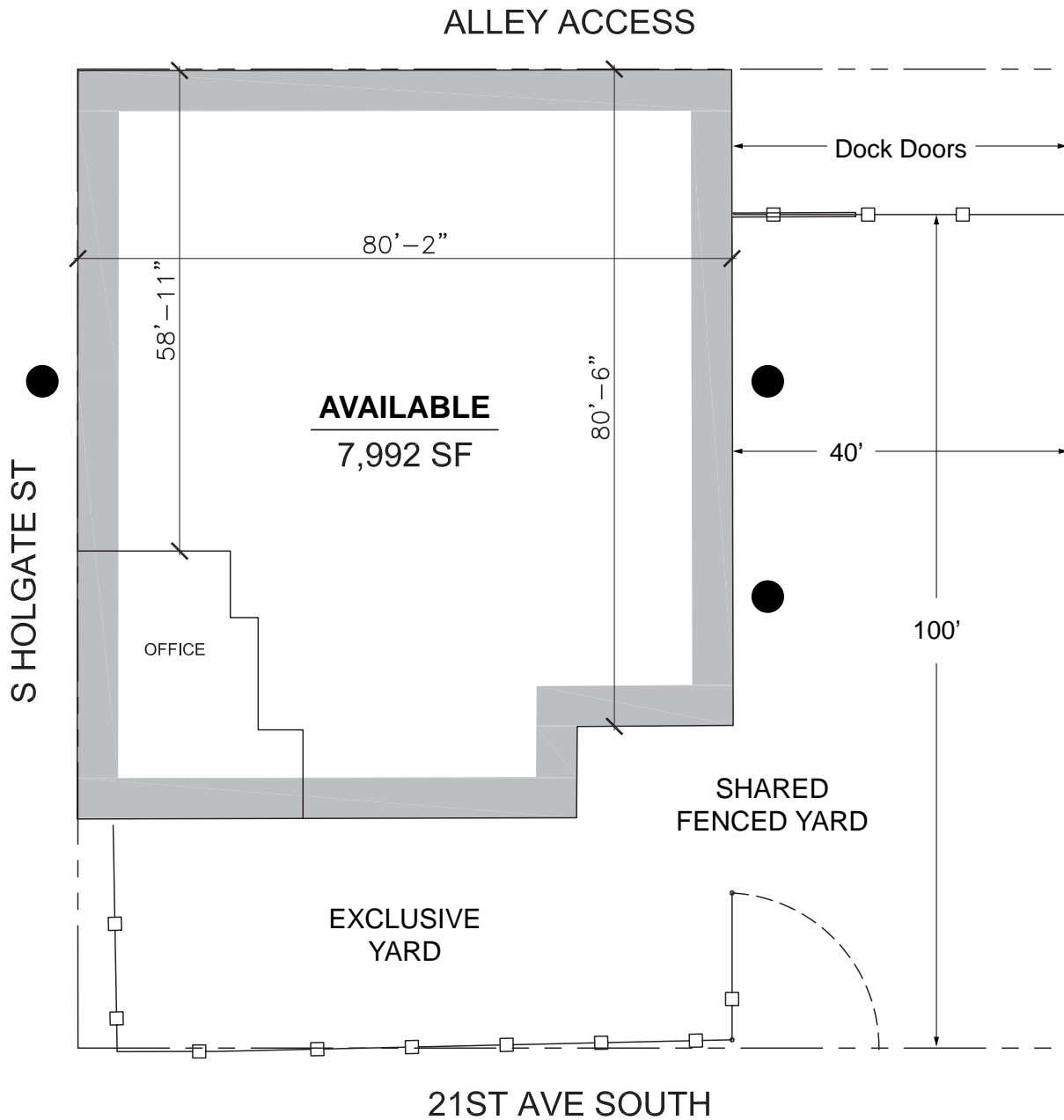
S HOLGATE ST

SEATTLE, WA 98144



NEIL WALTER
COMPANY

FLOOR PLAN



LEGEND

● GRADE LEVEL DOOR

2107

S HOLGATE ST

SEATTLE, WA 98144



NEIL WALTER
COMPANY



ED HOGAN
206.787.1477

ehogan@neilwalter.com

JOHN BLEDSOE
206.787.1460

jbledsoe@neilwalter.com

550 S Michigan St
Seattle, WA 98108
206.787.1800
www.neilwalter.com

All information references in this document are approximate. The information contained herein is contained from sources deemed reliable. It is provided without representation, warranty, or guarantee, expressed or implied as to accuracy. Prospective buyer or tenant should conduct its own independent investigation relating to the property, government codes and regulations, allowed uses, and all other matters, regardless of whether they are referred to or contained in this document.