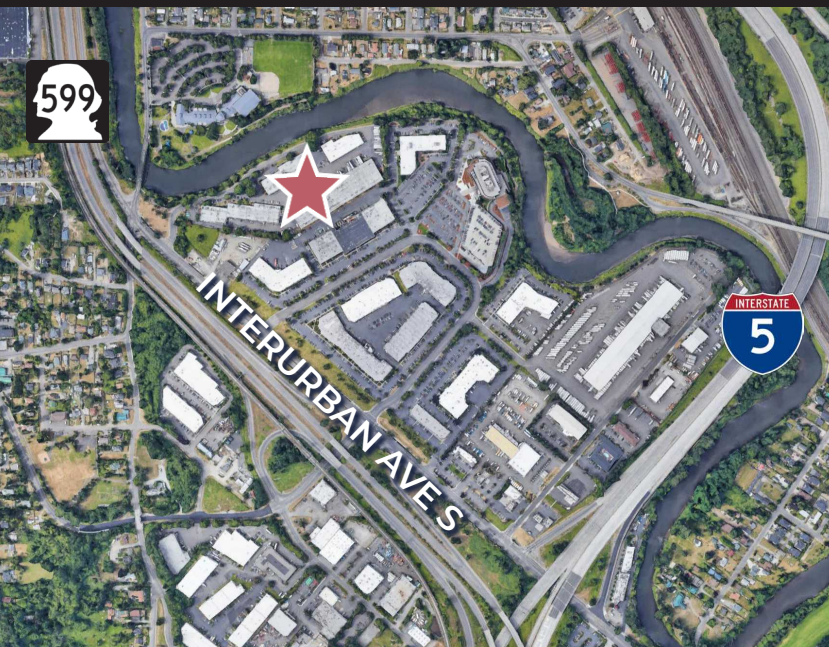




## TUKWILA COMMERCE PARK

12606 INTERURBAN AVE S,  
BLDG B, SUITE 130, TUKWILA, WA



## FOR LEASE 7,118 SF

2,144 SF Office

12' Clear height

3 Drive-in doors

Available May 1, 2026

Call agent for rates

2025 Est. NNN \$0.365/SF

Excellent access to I-5 and SR-599

Adjacent to Tukwila Community Center  
and Interurban Trail

**MATT WOOD, SIOR**

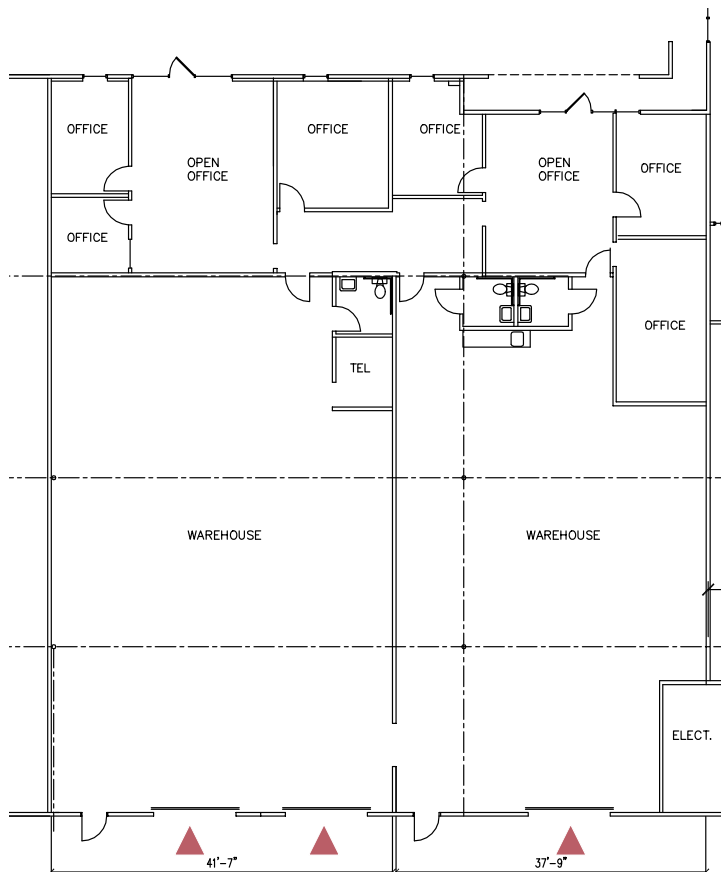
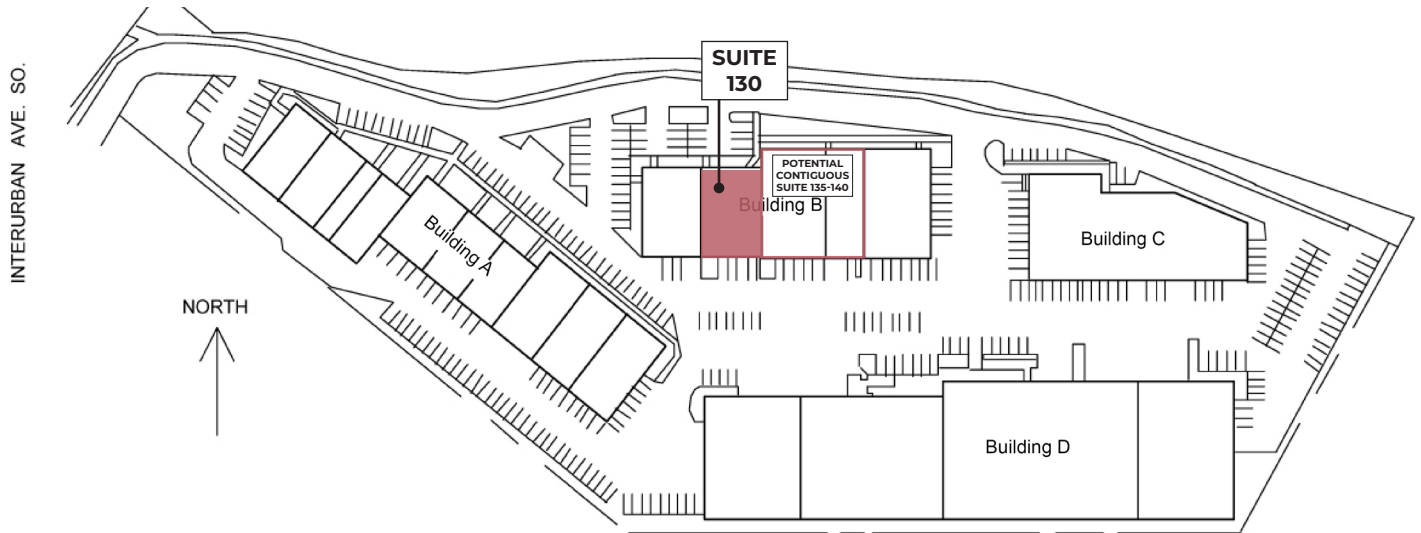
+1 206 595 6814

[matt.wood@kbcadvisors.com](mailto:matt.wood@kbcadvisors.com)

**JOHN BROOM**

+1 206 877 2750

[john.broom@kbcadvisors.com](mailto:john.broom@kbcadvisors.com)



## Space Information

7,118 SF Total

2,144 SF Office

12' Clear height

3 Drive-in doors

Available May 1, 2026

Contiguous up to 17,878 SF with adjacent suites 135-140

▲ Grade-level door

**MATT WOOD, SIOR**

+1 206 595 6814

matt.wood@kbcadvisors.com

**JOHN BROOM**

+1 206 877 2750

john.broom@kbcadvisors.com