



For Sublease

2323 Commerce St, Tacoma, Wa

*High-visibility Tacoma Brewery District flex space.
Ideal for assembly, church, office, or contractor.
Three blocks from SR 509, five blocks from I-5.*

PROPERTY HIGHLIGHTS

- + Dock-High loading
- + Zoned WR (Warehouse - Residential)
- + Great location in Tacoma's Brewery District
- + Ideal for church, engineering, general contractor offices
- + Close proximity to UW Tacoma, Everest College, Museum District, Tacoma Dome, LeMay Auto Museum, and Port of Tacoma
- + Great freeway access - 3 blocks to SR 509/Pacific - 5 blocks to I-5/26th Street
- + Flexible lease terms available
- + Sublease through August 2029

KYLE SCHIPPER, SIOR
Partner
+1 253 203 1320
kschipper@nai-psp.com

DAVE DOUGLAS, SIOR, CCIM
Partner
+1 253 203 1326
ddouglas@nai-psp.com



THE INFORMATION CONTAINED HEREIN HAS BEEN GIVEN TO US BY THE OWNER OF THE PROPERTY OR OTHER SOURCES WE DEEM RELIABLE, WE HAVE NO REASON TO DOUBT ITS ACCURACY, BUT WE DO NOT GUARANTEE IT. ALL INFORMATION SHOULD BE VERIFIED PRIOR TO PURCHASE OR LEASE.



TOTAL SF
21,000 SF

OFFICE SF
13,125 SF

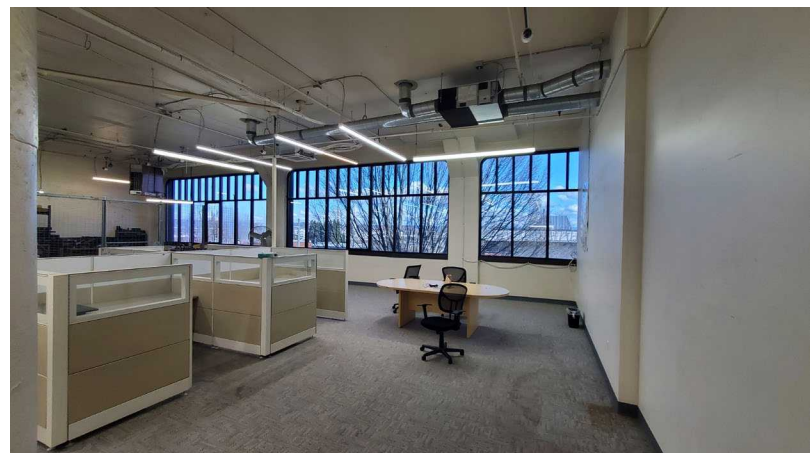
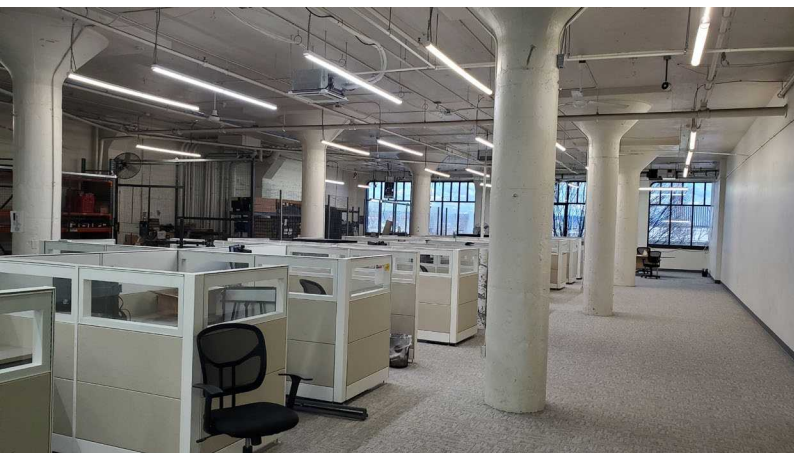
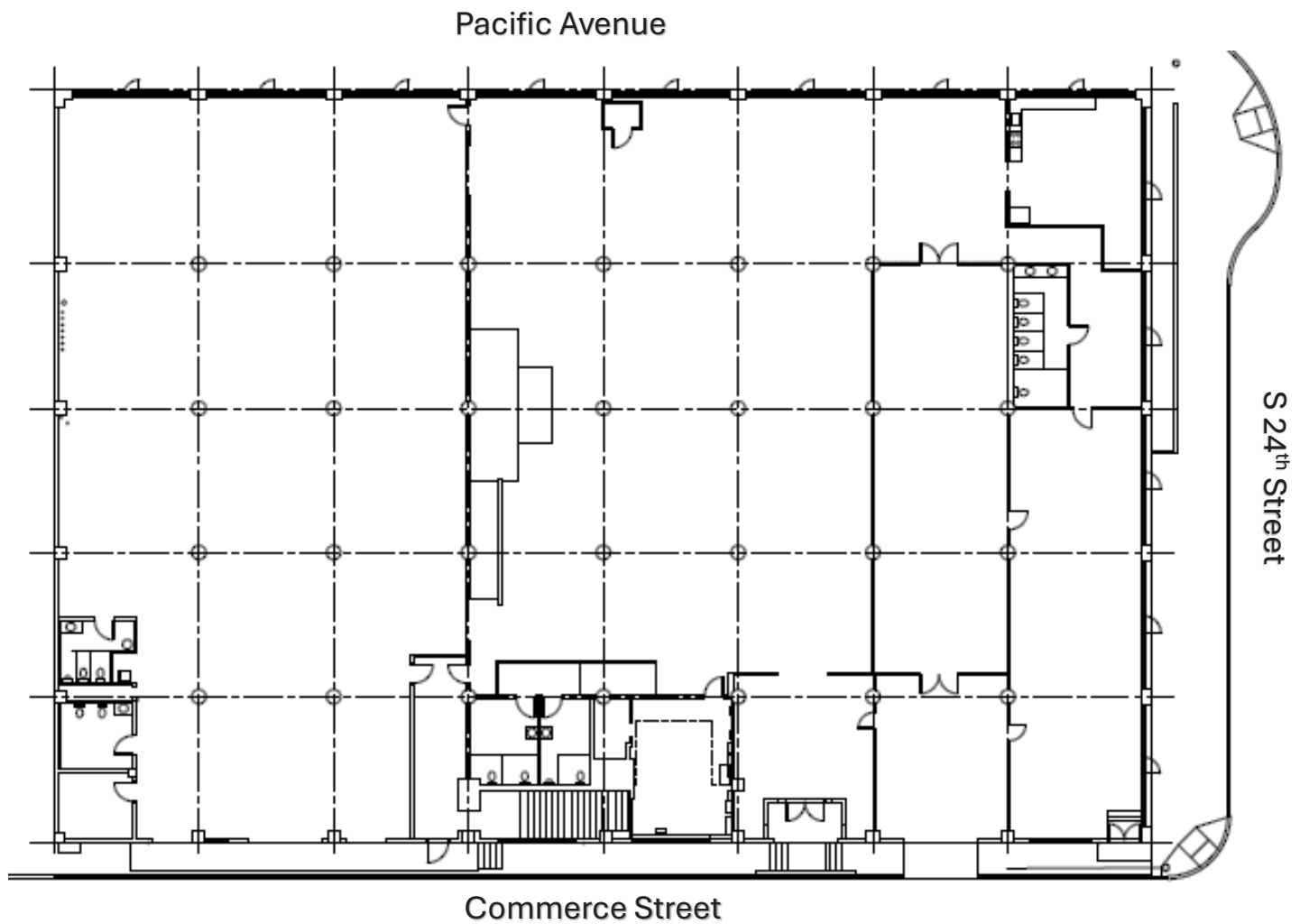
SHIPPING/STORAGE SF
7,875 SF

PRICE/SF
\$12.00

NNN'S
\$3.85



Floor Plan

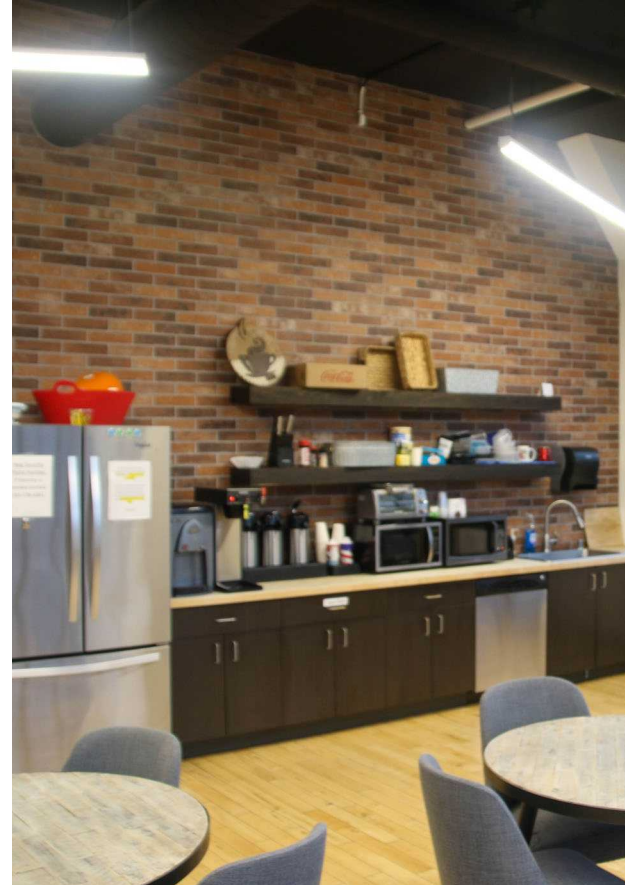
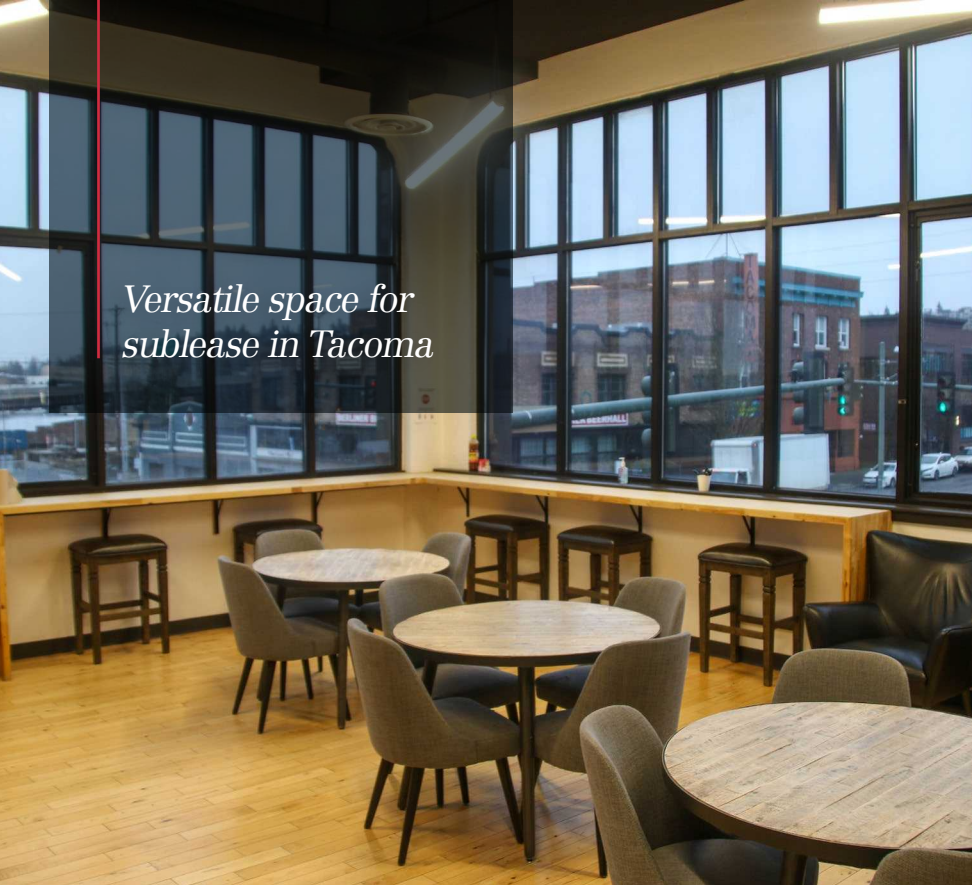


KYLE SCHIPPER, SIOR
Partner
+1 253 203 1320
kschipper@nai-psp.com

DAVE DOUGLAS, SIOR, CCIM
Partner
+1 253 203 1326
ddouglas@nai-psp.com



*Versatile space for
sublease in Tacoma*



KYLE SCHIPPER, SIOR
Partner
+1 253 203 1320
kschipper@nai-psp.com

DAVE DOUGLAS, SIOR, CCIM
Partner
+1 253 203 1326
ddouglas@nai-psp.com

