

# Parkade Plaza

---

511 W Main Avenue,  
Spokane, WA 99201

Prime  
Flagship  
Retail  
Opportunity  
Available  
Now:  
20,615 SF



---

Positioned in the heart of downtown Spokane, this flagship retail opportunity offers 20,615 SF of highly visible space along Main Avenue - one of the city's most active corridors.

Located just steps from River Park Square, the Davenport Grand, and Spokane's Convention Center, the property benefits from year-round foot traffic driven by retail, hospitality, office, and entertainment uses.







Parkade Plaza offers over 1,000 parking stalls right above the ground floor retail space that provides convenience for customers and employees.

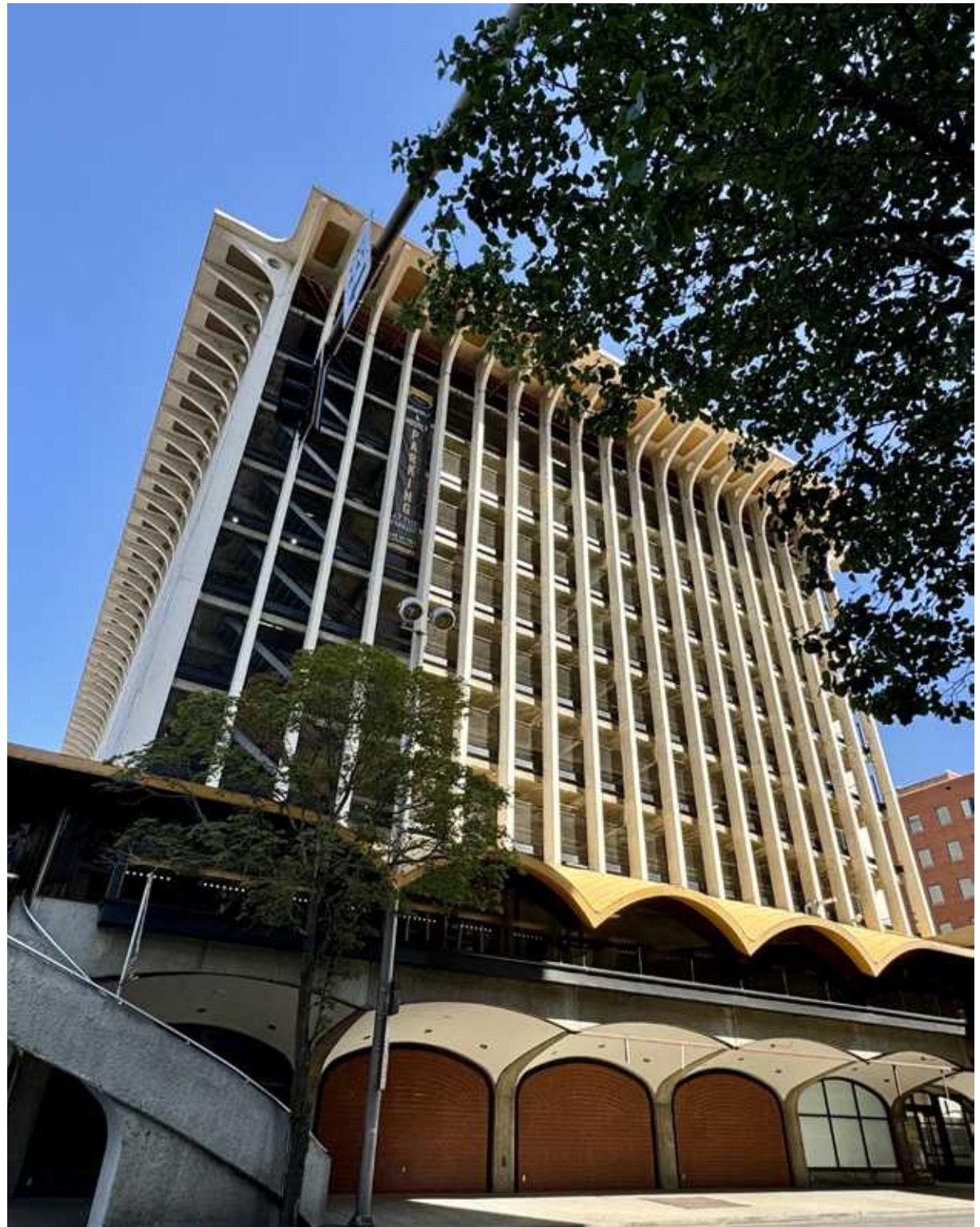


This central location provides unmatched accessibility, sitting within walking distance of major employers, thousands of downtown residents, and some of Spokane's most notable attractions including Riverfront Park, the First Interstate Center for the Arts, and the historic Davenport Hotel Collection. With expansive storefront visibility and a premier position in Spokane's urban center, Parkade Plaza offers a rare opportunity for a retailer to establish a presence in the heart of downtown Spokane.



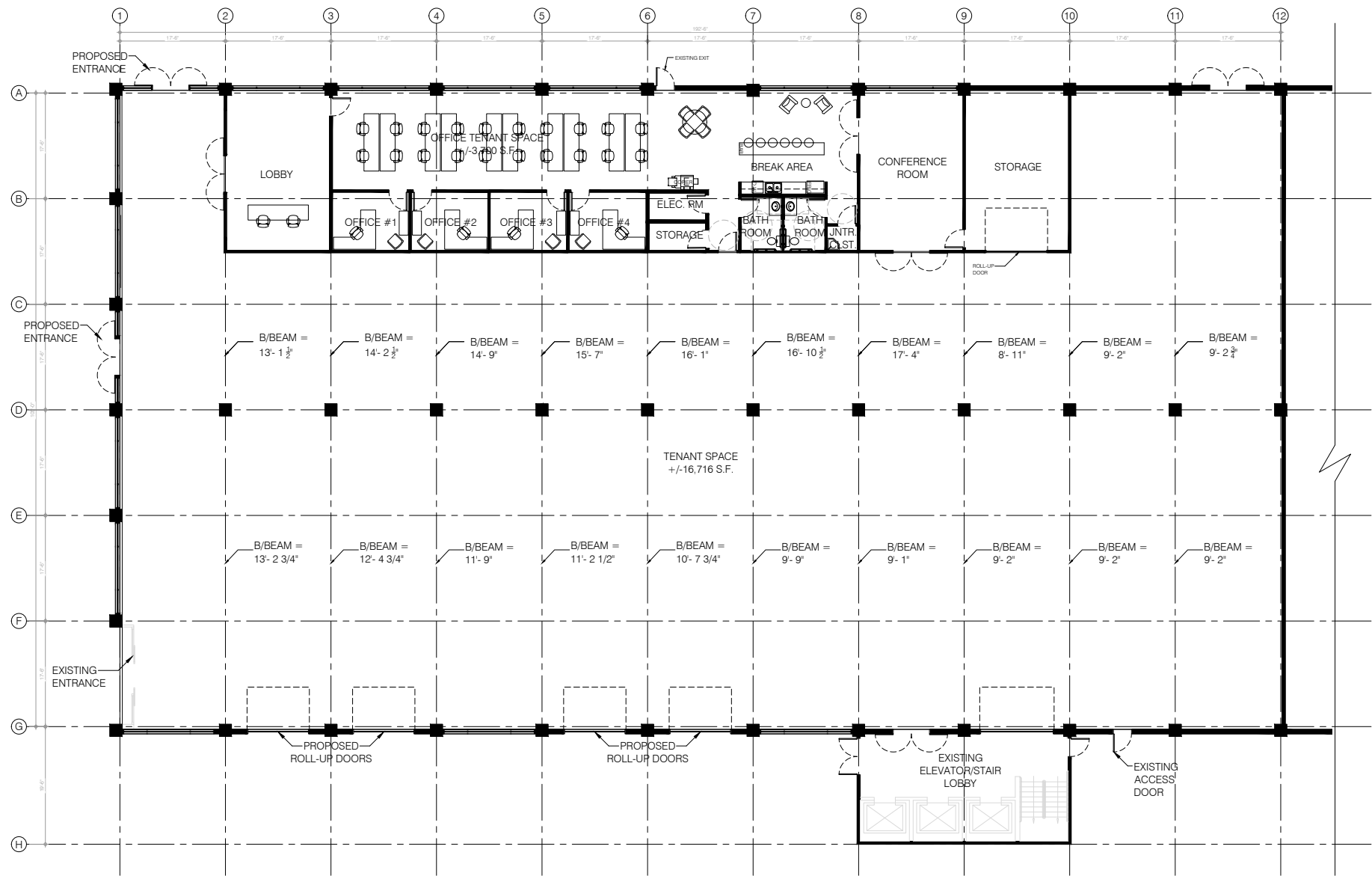
## Area Highlights:

- Over 10 million visits downtown annually from people for everyday destinations and events
- Hoopfest: Spokane hosts the largest 3-on-3 outdoor basketball tournament in the world. The event runs across ~45 city blocks in downtown Spokane, with ~450 courts, 6,000+ teams, and about 225,000 spectators/fans and thousands of volunteers
- Riverfront Park in downtown Spokane draws over 3 million annual visits and is the centerpiece of active pedestrian flow
- Gonzaga University is located a mile away from downtown with over 7,000 students



# FLOOR PLAN

20,615 SF





## Demographics



### TOTAL HOUSEHOLDS:

2 mile: 28,270  
5 Mile: 99,243  
10 Mile: 166,966



### POPULATION:

2 Mile: 63,529  
5 Mile: 236,984  
10 Mile: 414,293



### TRAFFIC COUNTS:

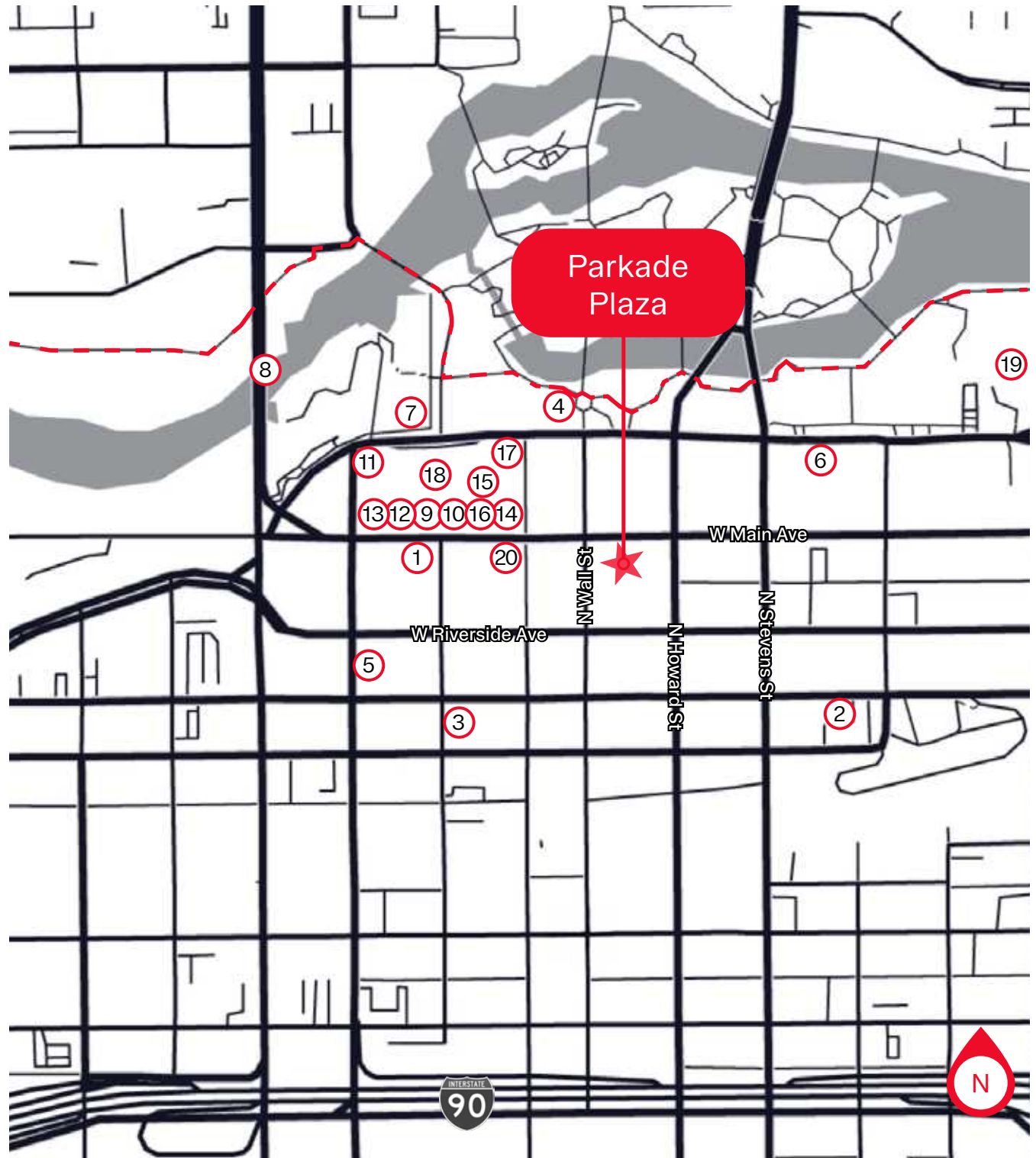
10,300 vehicles per day  
at N Stevens St & W Main Ave



## Area Map

1. PF Changs
2. Spokane Comedy Club
3. The Davenport Tower
4. Riverfront Park
5. The Davenport Hotel
6. The Davenport Grand
7. Spokane City Hall
8. Spokane Falls
9. Sephora
10. Lululemon
11. Nordstrom
12. Twigs Bistro & Martini Bar
13. Gene Juarez Salon and Skincare
14. Pottery Barn
15. The North Face
16. LEGO Store
17. Tavolata
18. AMC River Park Square
19. Spokane Convention Center
20. MOD Pizza

Centennial Trail







## Parkade Plaza

511 W Main Avenue, Spokane, WA 99201

### Madeline Stutz

madelines@wcccommercialrealty.com  
206 422 7598

### Tiffini Connell

tiffini@wcccommercialrealty.com  
206 854 1925

**WCCR** | West Coast  
Commercial  
Realty

DISCLAIMER: The above information has been secured from sources believed to be reliable, however, no representations are made to its accuracy. Prospective tenants or buyers should consult their professional advisors and conduct their own independent investigation. Site plan and configuration are subject to change. Properties are subject to change in price and/or availability without notice. West Coast Commercial Realty, LLC



206 283 5212  
[wcccommercialrealty.com](http://wcccommercialrealty.com)