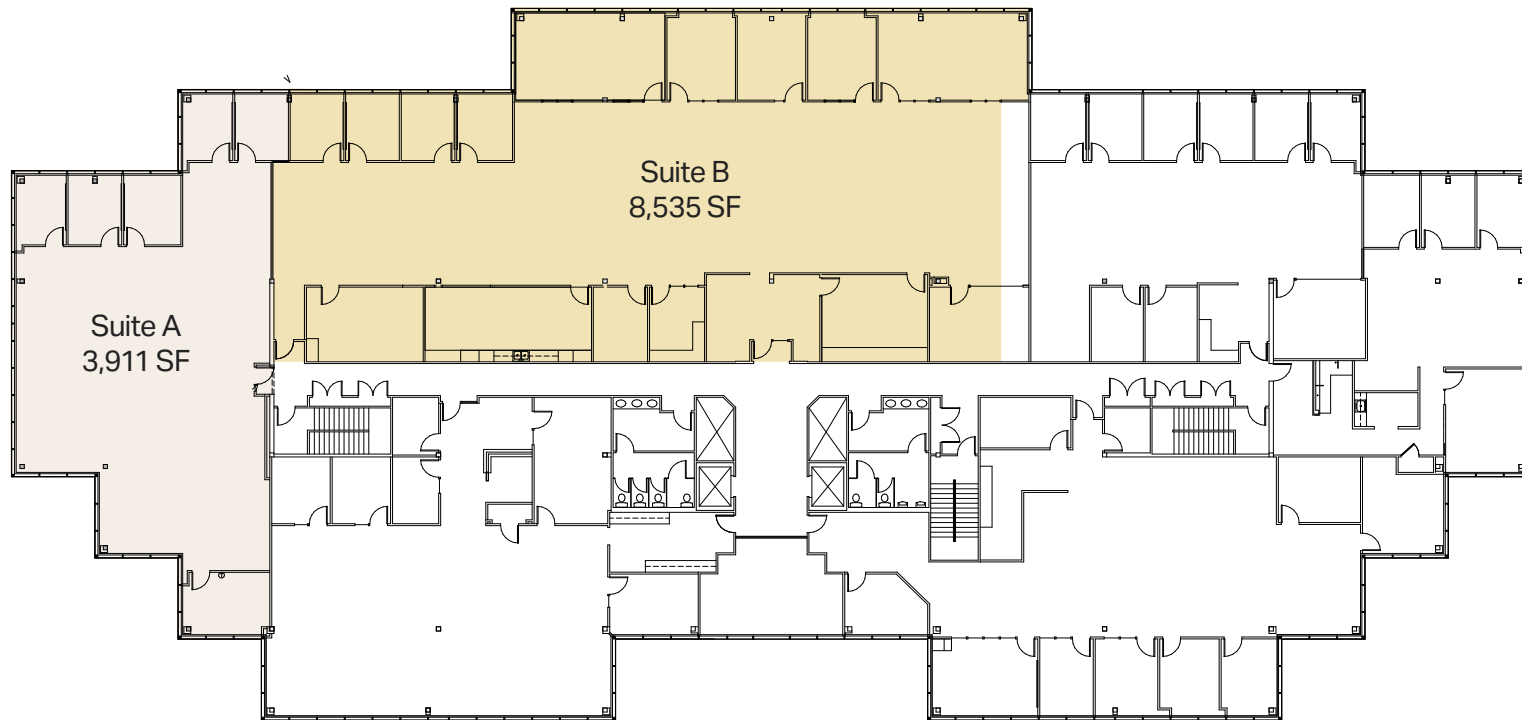


## Suite 200

Conceptual Multi-Tenant Scenario



### KEY SITE PLAN



**Scott Davis**  
Executive Vice President  
+1 425 941 7573  
[scott.davis@cbre.com](mailto:scott.davis@cbre.com)

**Tim Owens**  
Senior Vice President  
+1 425 462 6913  
[tim.owens@cbre.com](mailto:tim.owens@cbre.com)

**KGIP CBRE**

© 2025 CBRE, Inc. All rights reserved. This information has been obtained from sources believed reliable, but has not been verified for accuracy or completeness. You should conduct a careful, independent investigation of the property and verify all information. Any reliance on this information is solely at your own risk. CBRE and the CBRE logo are service marks of CBRE, Inc. All other marks displayed on this document are the property of their respective owners, and the use of such logos does not imply any affiliation with or endorsement of CBRE. Photos herein are the property of their respective owners. Use of these images without the express written consent of the owner is prohibited. PMStudio\_October2025

Suite B  
8,535 SF

**Suite 200**  
Conceptual Furniture Plan  
for Multi-Tenant Scenario



Suite A  
3,911 SF

## KEY SITE PLAN



**Scott Davis**  
Executive Vice President  
+1 425 941 7573  
scott.davis@cbre.com

**Tim Owens**  
Senior Vice President  
+1 425 462 6913  
tim.owens@cbre.com

**KGIP CBRE**

© 2025 CBRE, Inc. All rights reserved. This information has been obtained from sources believed reliable, but has not been verified for accuracy or completeness. You should conduct a careful, independent investigation of the property and verify all information. Any reliance on this information is solely at your own risk. CBRE and the CBRE logo are service marks of CBRE, Inc. All other marks displayed on this document are the property of their respective owners, and the use of such logos does not imply any affiliation with or endorsement of CBRE. Photos herein are the property of their respective owners. Use of these images without the express written consent of the owner is prohibited. PMStudio\_October2025