

For Lease

Retail/Warehouse

NAIBlack



2110 1st Street

Cheney, Washington 99004

Property Description

Building Size: 6,400± SF

- Gas Heat
- Electrical: 200 Amp, single-phase
- New Roof Installed 2024
- New Glass Entry Facade (to be completed in November).
- New interior insulation throughout the front retail sales area.

Lot Size: 19,800± SF

- Parcel ID: 13124.0026

Frontage: 100' along 1st Street

Traffic: 17,000± ADT

Signage: Existing Pylon

Zoning: General Commercial (C-2)

Location: Premier retail exposure at the epicenter of neighboring national retailers and anchored shopping centers (see pg. 3 aerial for details)



For more information

Mark C. McLees

O: 509 622 3554

mmclees@naiblack.com

Jim Orcutt

O: 509 622 3558

jorcutt@naiblack.com

Lease Rate: \$3,500/mo. NNN

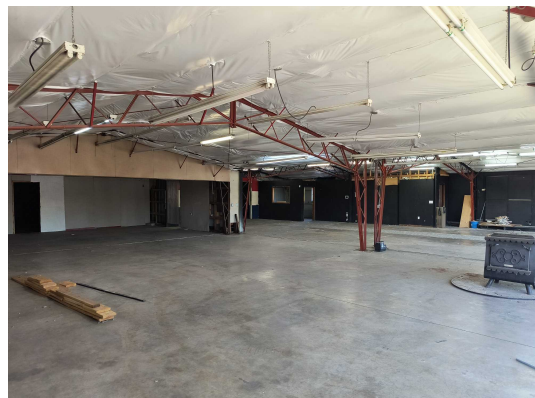
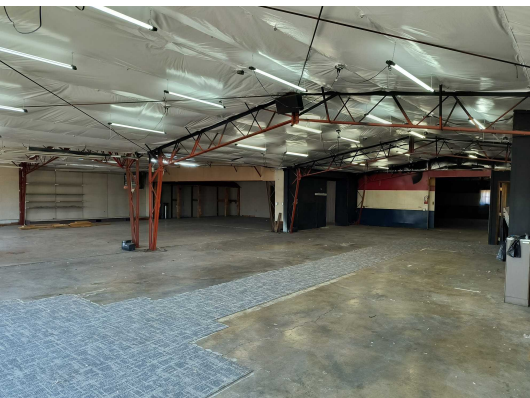
No warranty or representation, expression or implied, is made as to the accuracy of the information contained herein, and the same is submitted subject to errors, omissions, change or price, rental or other conditions, prior to sale, lease, financing, or withdrawal without notice, and of special listing conditions imposed by our principals no warranties or representations are made as to the condition of the property or any hazards contained therein or any to be implied.

801 W. Riverside Avenue, Suite 300
Spokane, WA 99201
509 623 1000 tel
naiblack.com

For Lease

Retail/Warehouse

NAI Black



No warranty or representation, expression or implied, is made as to the accuracy of the information contained herein, and the same is submitted subject to errors, omissions, change or price, rental or other conditions, prior to sale, lease, financing, or withdrawal without notice, and of special listing conditions imposed by our principals no warranties or representations are made as to the condition of the property or any hazards contained therein or any to be implied.

801 W. Riverside Avenue, Suite 300
Spokane, WA 99201
509 623 1000 tel
naiblack.com

For Lease
Retail/Warehouse

NAIBlack



No warranty or representation, expression or implied, is made as to the accuracy of the information contained herein, and the same is submitted subject to errors, omissions, change or price, rental or other conditions, prior to sale, lease, financing, or withdrawal without notice, and of special listing conditions imposed by our principals no warranties or representations are made as to the condition of the property or any hazards contained therein or any to be implied.

801 W. Riverside Avenue, Suite 300
Spokane, WA 99201
509 623 1000 tel
naiblack.com