



# 617

## EASTLAKE

617 EASTLAKE AVE E, SEATTLE, WA 98109

**NEWMARK**

**LEVI BUNDRANT**

Associate  
425.409.7405  
[levi.bundrant@nmrk.com](mailto:levi.bundrant@nmrk.com)

**ED MAO**

Associate  
310.694.7191  
[edward.mao@nmrk.com](mailto:edward.mao@nmrk.com)



# BUILDING HIGHLIGHTS



Sweeping views of Lake Union and the Seattle skyline



Outstanding visibility and accessibility from nearby freeways



High-profile exterior signage opportunity for strong brand presence



Generous on-site parking to accommodate staff and visitors



Modern HVAC system featuring bipolar ionization and MERV-13 filtration for enhanced air quality



High-end, move-in ready build-outs with full wiring in place



Secure bike storage and onsite shower facilities to support an active commute







# SUITE AVAILABILITIES

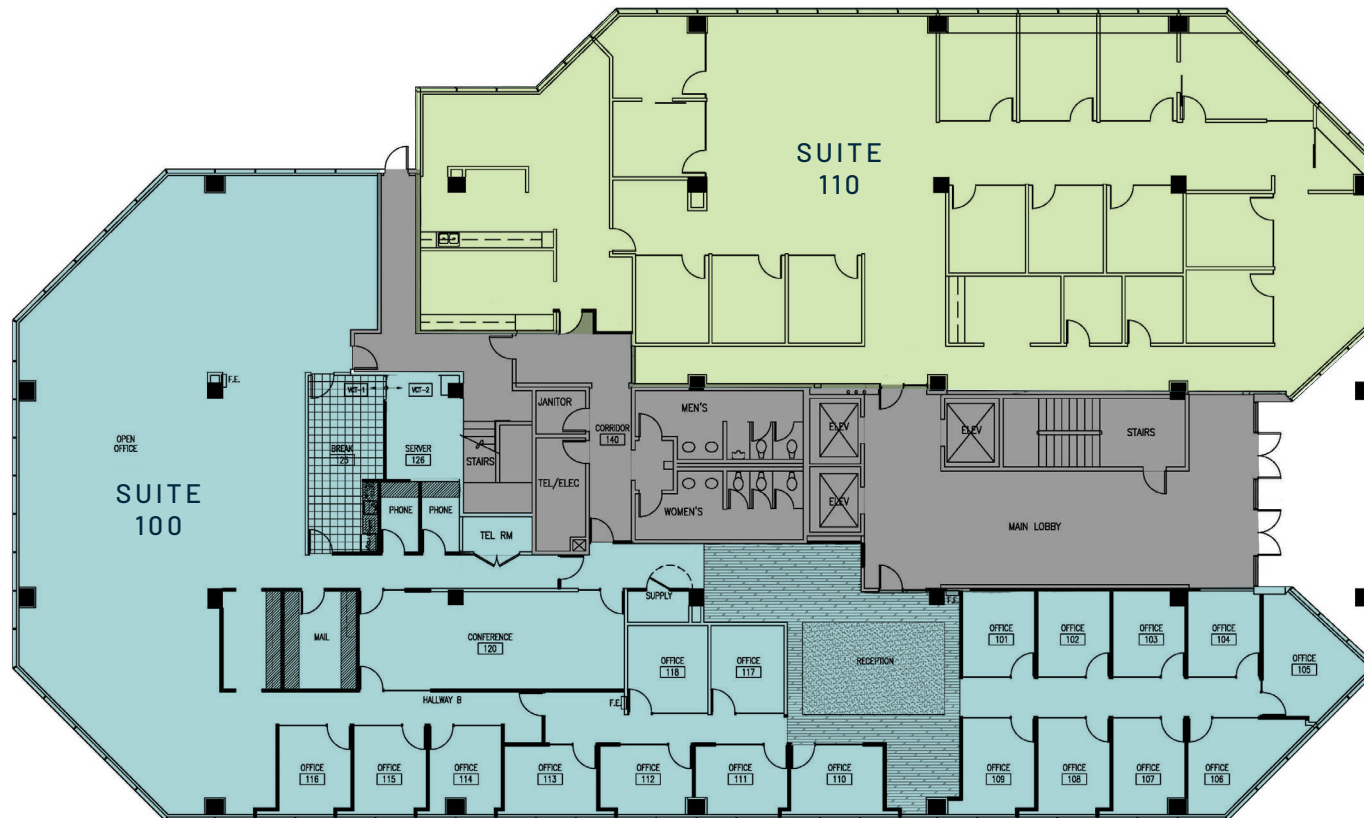
SUITE	SF
100	9,090 SF
110	6,604 SF
200	15,297 SF
210	2,727 SF
320	3,473 SF
330	3,216 SF
500	14,327 SF



# SUITE 100 & 110

**Suite 100: 9,090 SF** | Available June 1, 2026

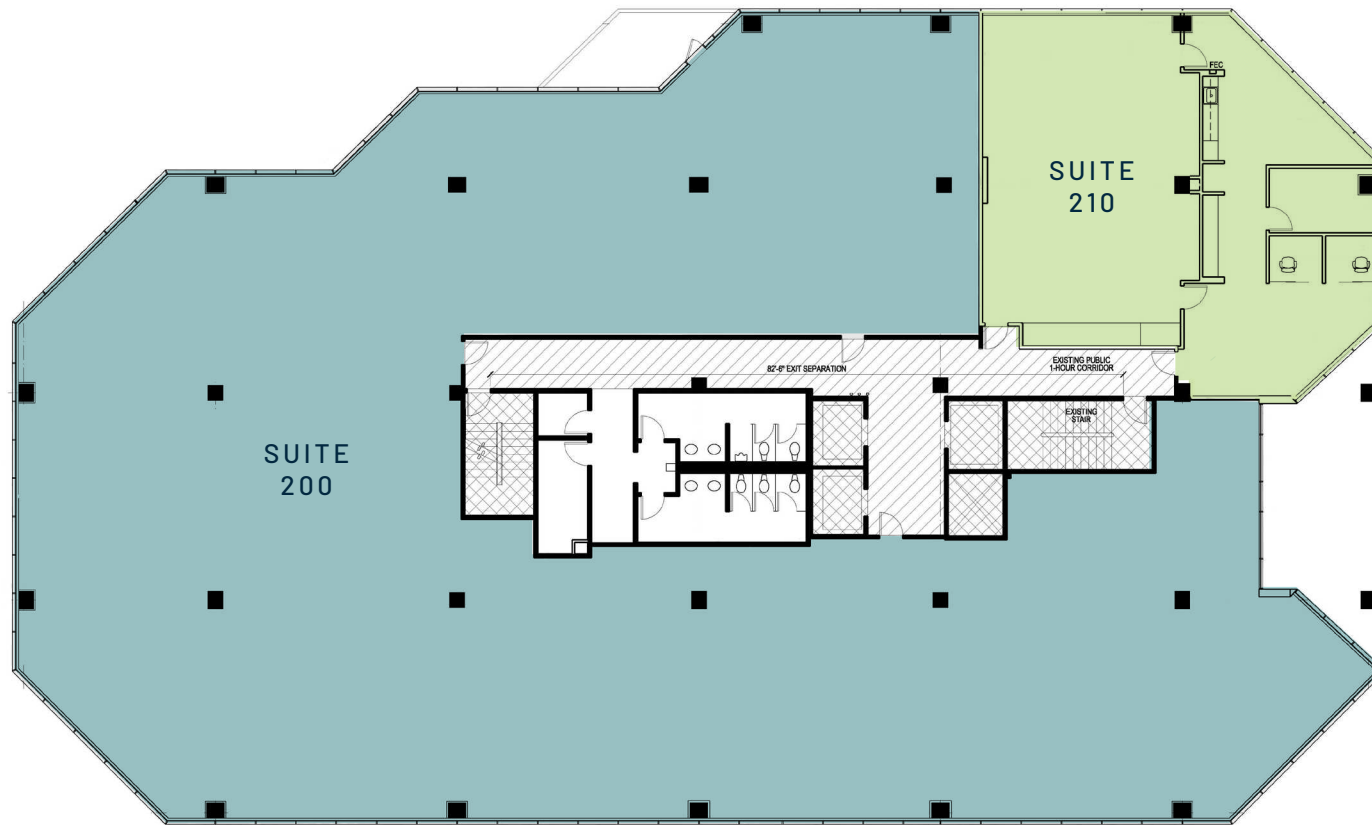
**Suite 110: 6,604 SF** | Available Now



# SUITE 200 & 210

**Suite 200: 15,297 SF** | Available Now

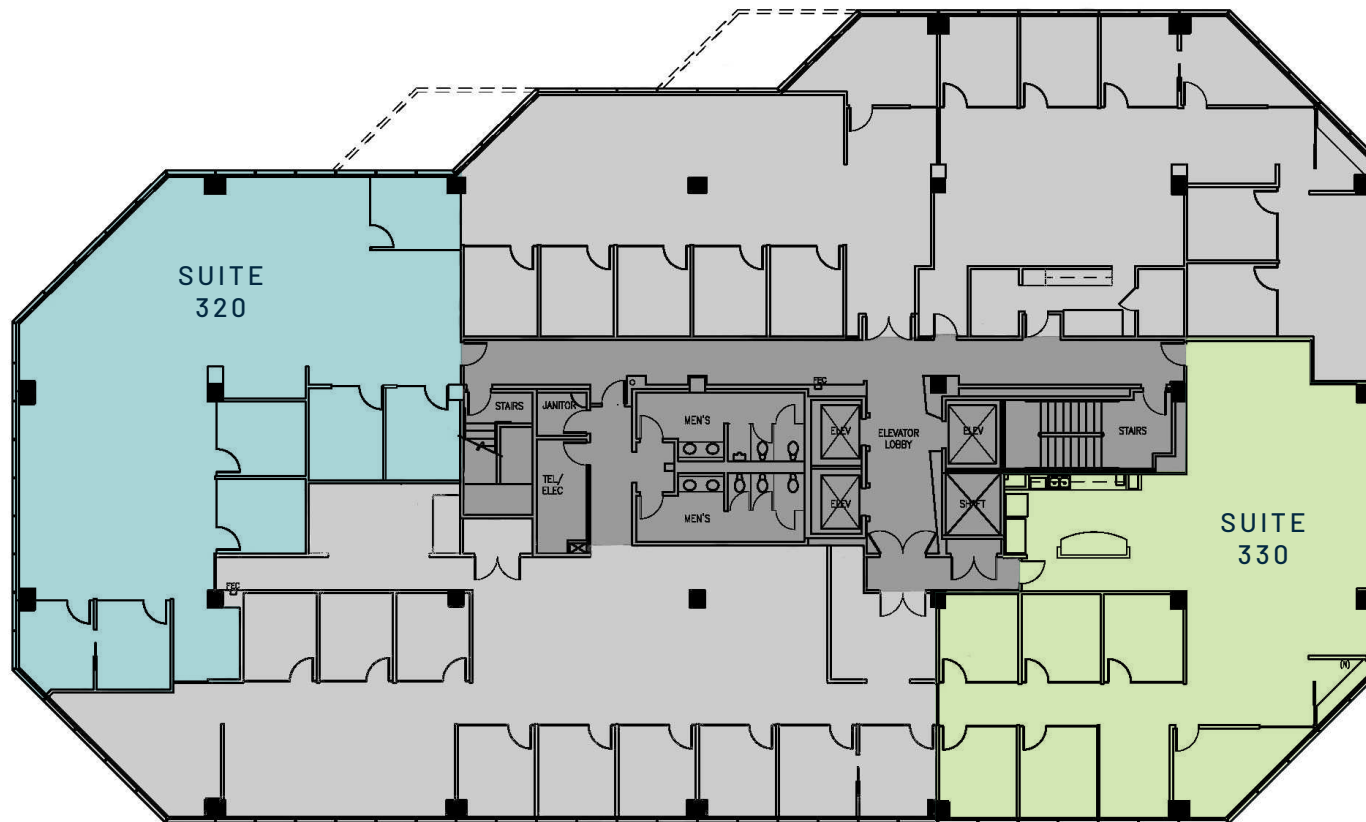
**Suite 210: 2,727 SF** | Available Now



# SUITE 320 & 330

**Suite 320: 3,473 SF** | Available Now

**Suite 330: 3,216 SF** | Available Now



# SUITE 500

14,327 SF | Available Now





# 617

## EASTLAKE

617 EASTLAKE AVE E, SEATTLE, WA 98109

### LEVI BUNDRANT

Associate

425.409.7405

levi.bundrant@nrmk.com

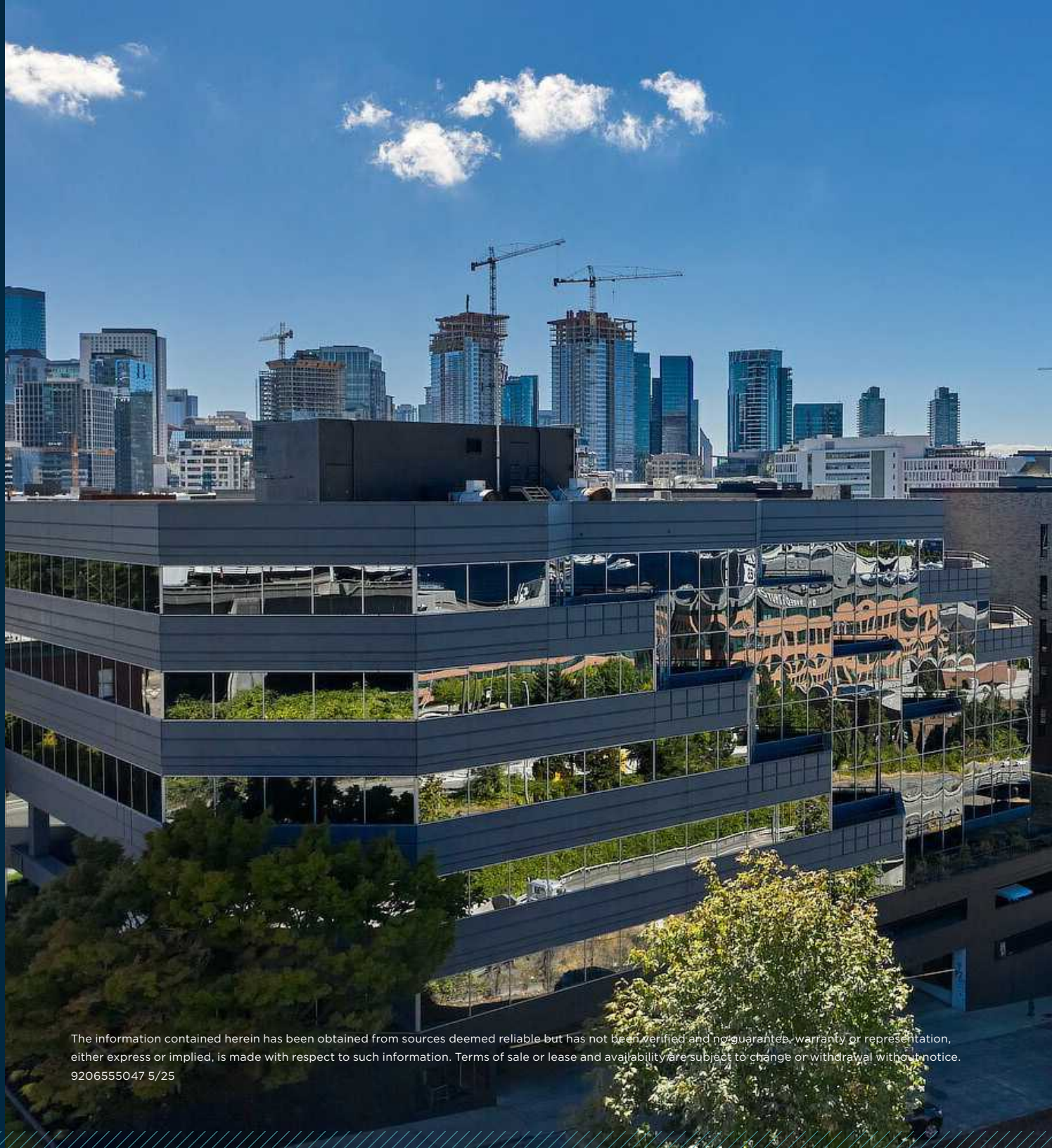
### ED MAO

Associate

310.694.7191

edward.mao@nrmk.com

# NEWMARK



The information contained herein has been obtained from sources deemed reliable but has not been verified and no guarantee, warranty or representation, either express or implied, is made with respect to such information. Terms of sale or lease and availability are subject to change or withdrawal without notice.  
9206555047 5/25