



For Lease | Everett Plaza

5305 Evergreen Way, Suite 5305-B, Everett, WA

**This image has been modified from its original form*

Shopping center with irreplaceable location near lighted intersection of 52nd Street & Evergreen Way.

PROPERTY HIGHLIGHTS

- + Grocery anchored retail center
- + Built out restaurant
- + Busy Evergreen Way location
- + Fully sprinklered building
- + Excellent on-property parking
- + 33,243+ daily traffic counts
- + Everett is located about 25 miles north of Seattle in Snohomish County, and is the largest city in the county

BLAKE STEDMAN

Senior Vice President
+1 425 586 5621
bstedman@nai-psp.com

RICHARD ZHOU

Associate
+1 425 586 5623
rzhou@nai-psp.com



THE INFORMATION CONTAINED HEREIN HAS BEEN GIVEN TO US BY THE OWNER OF THE PROPERTY OR OTHER SOURCES WE DEEM RELIABLE, WE HAVE NO REASON TO DOUBT ITS ACCURACY, BUT WE DO NOT GUARANTEE IT. ALL INFORMATION SHOULD BE VERIFIED PRIOR TO PURCHASE OR LEASE.

TOTAL SF

6,443 SF

LEASE RATE

\$17.50 PSF

ZONING

B2

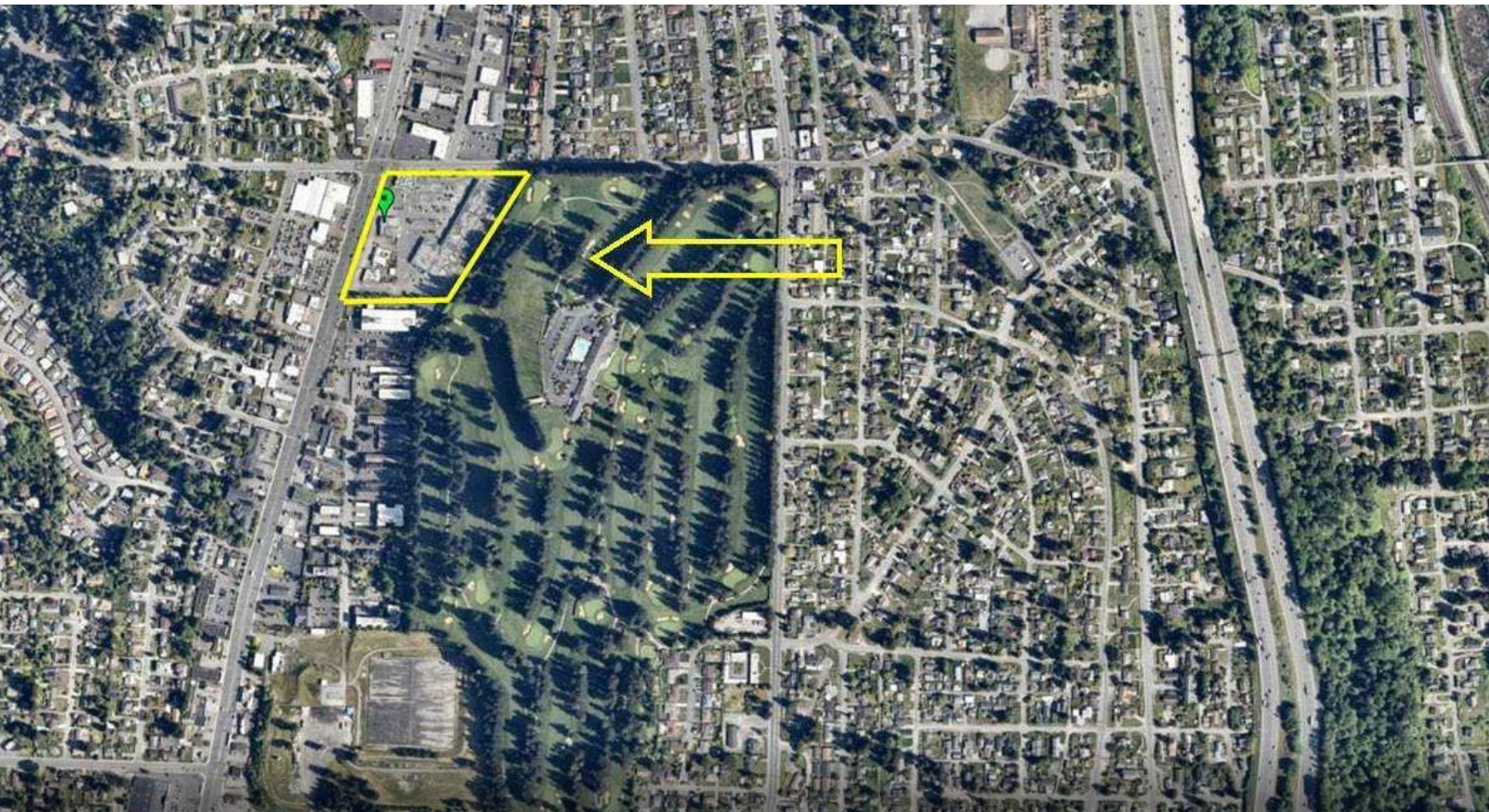
TYPE

NNN

nai-psp.com



*Space for lease
in Everett retail
corridor.*



BLAKE STEDMAN

Senior Vice President
+1 425 586 5621
bstedman@nai-psp.com

RICHARD ZHOU

Associate
+1 425 586 5623
rzhou@nai-psp.com



Demographics



5305 EVERGREEN WAY, EVERETT, WA

	1 MILE	3 MILES	5 MILES
Population	14,338	80,316	181,438
2030 Population	14,538	82,087	186,695
Households	5,497	32,497	71,135
Median Age	40.2	38.9	38.2
Median HH Income	\$98,966	\$84,240	\$88,345

BLAKE STEDMAN

Senior Vice President
+1 425 586 5621
bstedman@nai-psp.com

RICHARD ZHOU

Associate
+1 425 586 5623
rzhou@nai-psp.com

