



600 W WILBUR AVE

INDUSTRIAL SPACE FOR SUBLEASE | COEUR D'ALENE, ID 83815

CONTACT

DANNY DAVIS, CCIM
208.691.6003
danny@tokcommercial.com

HIGHLIGHTS

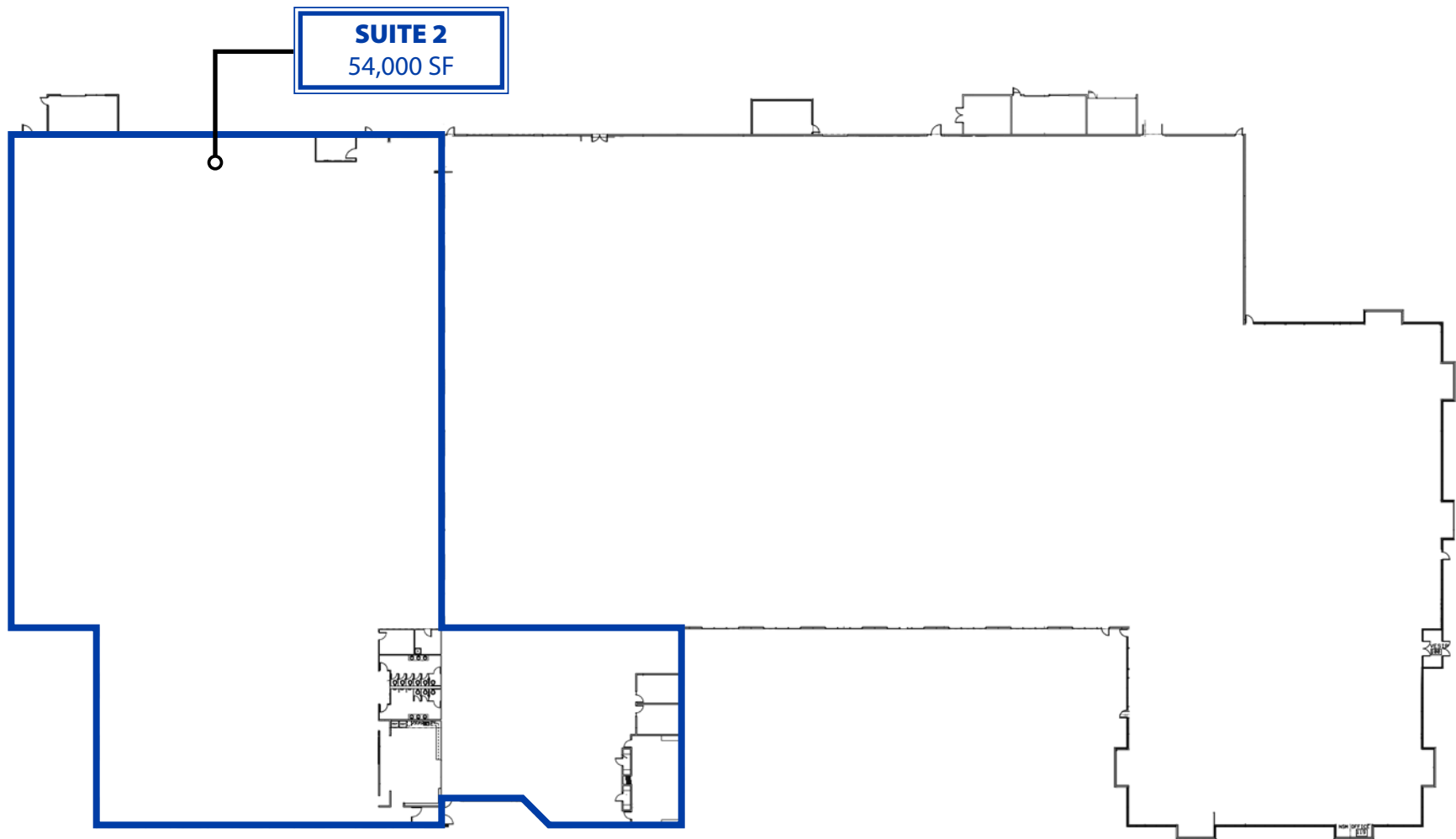
- Concrete tilt-up construction with modern glass façade
- Large secured site offering ample parking and loading access
- Four shared loading docks, two of which are at grade level
- Flexible layout suitable for manufacturing or technology users
- Easy access to major arterials and nearby commercial

DETAILS

AVAILABLE	SIZE	RATE
Suite 2	54,000 SF	\$10.80/SF/yr, NNN

LOT SIZE:	13.21 Acres	GRADE LEVEL:	2 (Shared)
BLDG SIZE:	139,184 SF	ZONING:	LM
YEAR BUILT:	1998	LEASE TYPE:	NNN
POWER:	3-Phase; 600 amps	AVAILABLE:	Immediately
DOCK DOORS:	4 (Shared)	SUBLEASE THRU:	Feb. 2028

FLOOR PLANS



600 W WILBER AVE

UPDATED: 10.15.2025 THIS PROPERTY IS EXCLUSIVELY MARKETING BY TOK INLAND NORTHWEST LLC DBA TOK COMMERCIAL This information was obtained from sources believed reliable but cannot be guaranteed. Any opinions or estimates are used for example only.

TOKCOMMERCIAL.COM



600 W WILBER AVE

UPDATED: 10.15.2025

THIS PROPERTY IS EXCLUSIVELY MARKETING BY TOK INLAND NORTHWEST LLC DBA TOK COMMERCIAL. This information was obtained from sources believed reliable but cannot be guaranteed. Any opinions or estimates are used for example only.

TOKCOMMERCIAL.COM

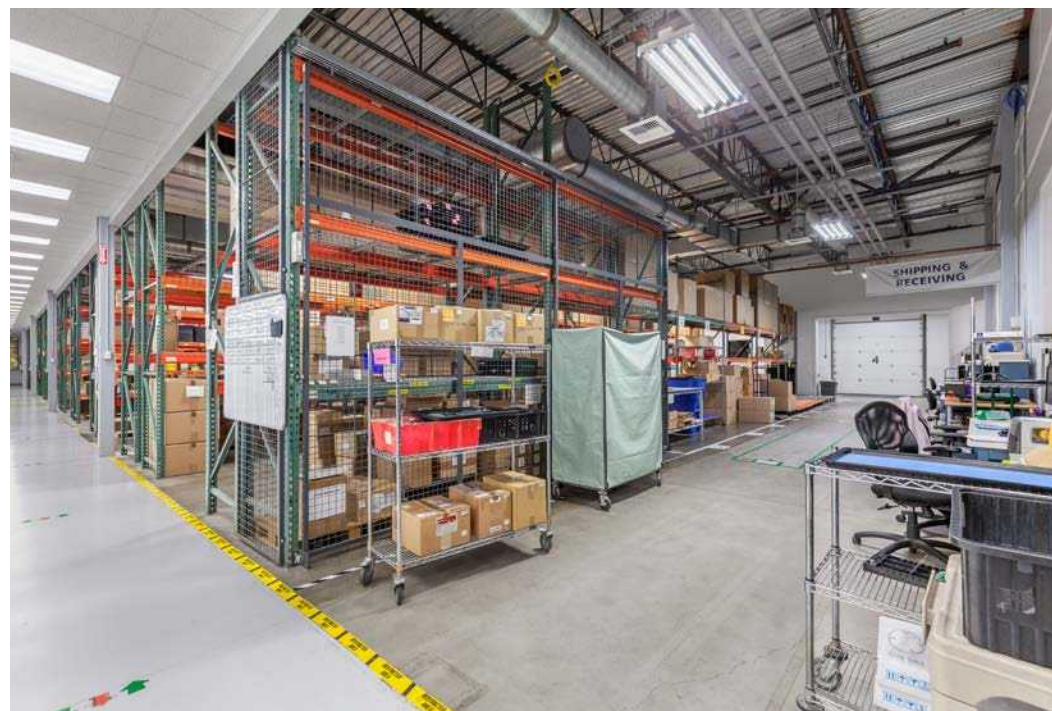


600 W WILBER AVE

UPDATED: 10.15.2025

THIS PROPERTY IS EXCLUSIVELY MARKETING BY TOK INLAND NORTHWEST LLC DBA TOK COMMERCIAL. This information was obtained from sources believed reliable but cannot be guaranteed. Any opinions or estimates are used for example only.

TOKCOMMERCIAL.COM



600 W WILBER AVE

UPDATED: 10.15.2025 THIS PROPERTY IS EXCLUSIVELY MARKETING BY TOK INLAND NORTHWEST LLC DBA TOK COMMERCIAL This information was obtained from sources believed reliable but cannot be guaranteed. Any opinions or estimates are used for example only.

TOKCOMMERCIAL.COM



600 W WILBER AVE

UPDATED: 10.15.2025 THIS PROPERTY IS EXCLUSIVELY MARKETING BY TOK INLAND NORTHWEST LLC DBA TOK COMMERCIAL This information was obtained from sources believed reliable but cannot be guaranteed. Any opinions or estimates are used for example only.

TOKCOMMERCIAL.COM



DOWNTOWN CDA

US
95

SITE

SILVERLAKE MALL

McDonald's Applebee's

Planet Fitness Bath & Body Works Black Sheep Harry Potter

33,403 VPD

McDonald's

Olive Garden

W CANFIELD AVE

Aaron's Rent to Own ULTA TJ Maxx

petco THE HEALTH & WELLNESS CO. SIERRA TRADING POST

ADVANCED INPUT SYSTEMS

W WILBUR AVE

600 W WILBER AVE

UPDATED: 10.15.2025

THIS PROPERTY IS EXCLUSIVELY MARKETING BY TOK INLAND NORTHWEST LLC DBA TOK COMMERCIAL. This information was obtained from sources believed reliable but cannot be guaranteed. Any opinions or estimates are used for example only.

TOKCOMMERCIAL.COM



KOHL'S
Starbucks
DEL TACO

US
95

35,189 VPD

BEST BUY
Panda Express

W WILBUR AVE

SITE

ADVANCED
INPUT SYSTEMS

Aaron's
Rent to Own
ULTA
TJ-maxx
petco
THE HEALTH +
WELLNESS CO.
SIERRA
TRADING POST

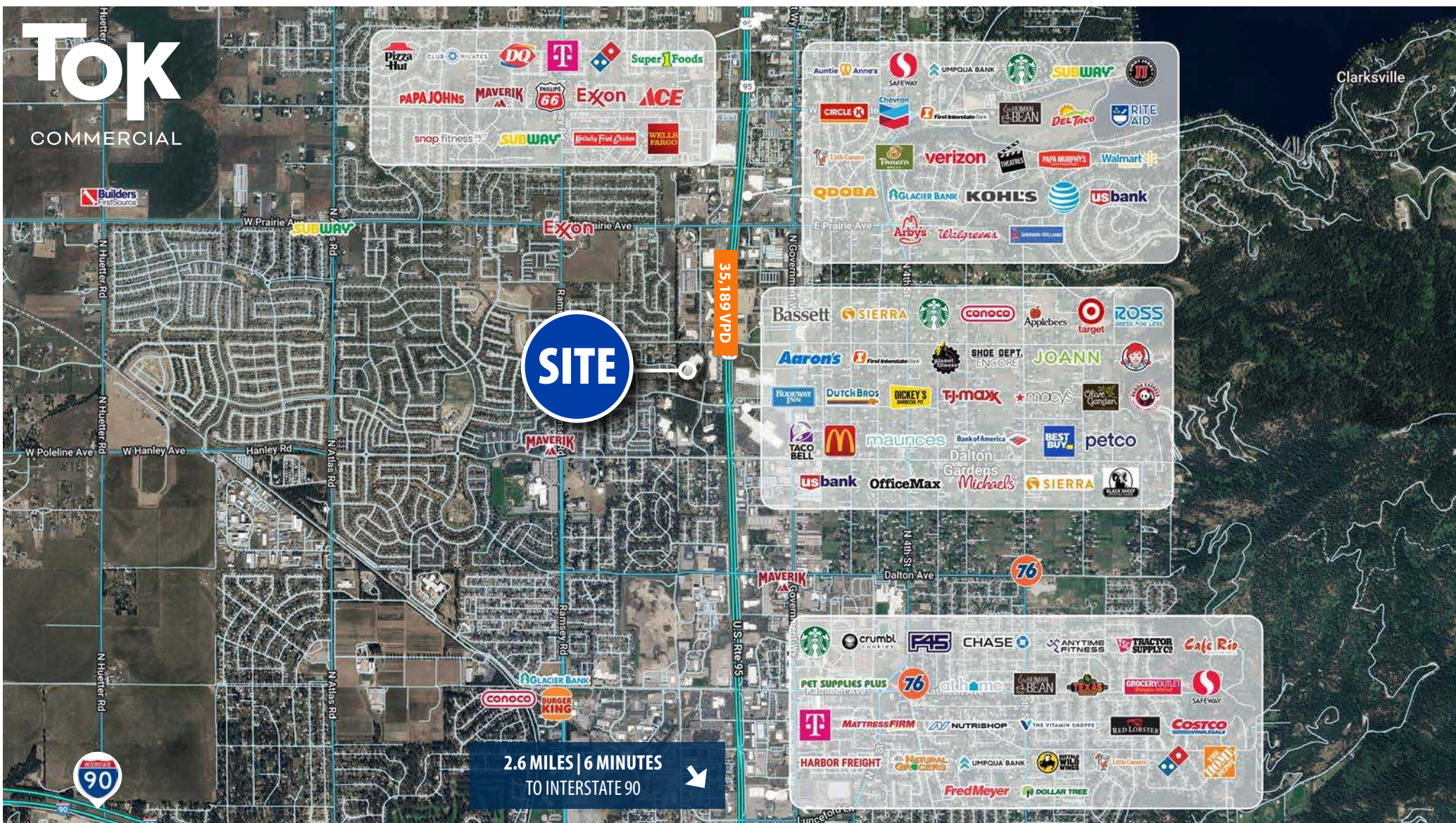
600 W WILBER AVE

UPDATED: 10.15.2025 THIS PROPERTY IS EXCLUSIVELY MARKETING BY TOK INLAND NORTHWEST LLC DBA TOK COMMERCIAL This information was obtained from sources believed reliable but cannot be guaranteed. Any opinions or estimates are used for example only.

TOKCOMMERCIAL.COM

AERIAL MAP

SURROUNDED BY AMENITIES



1 MILE RADIUS



POPULATION

8,267



HISTORIC ANN. GROWTH

3.0%



AVG. HOUSEHOLD INC.

\$109,516

3 MILE RADIUS



POPULATION

61,397



HISTORIC ANN. GROWTH

2.3%



AVG. HOUSEHOLD INC.

\$98,854

5 MILE RADIUS



96,499



2.2%

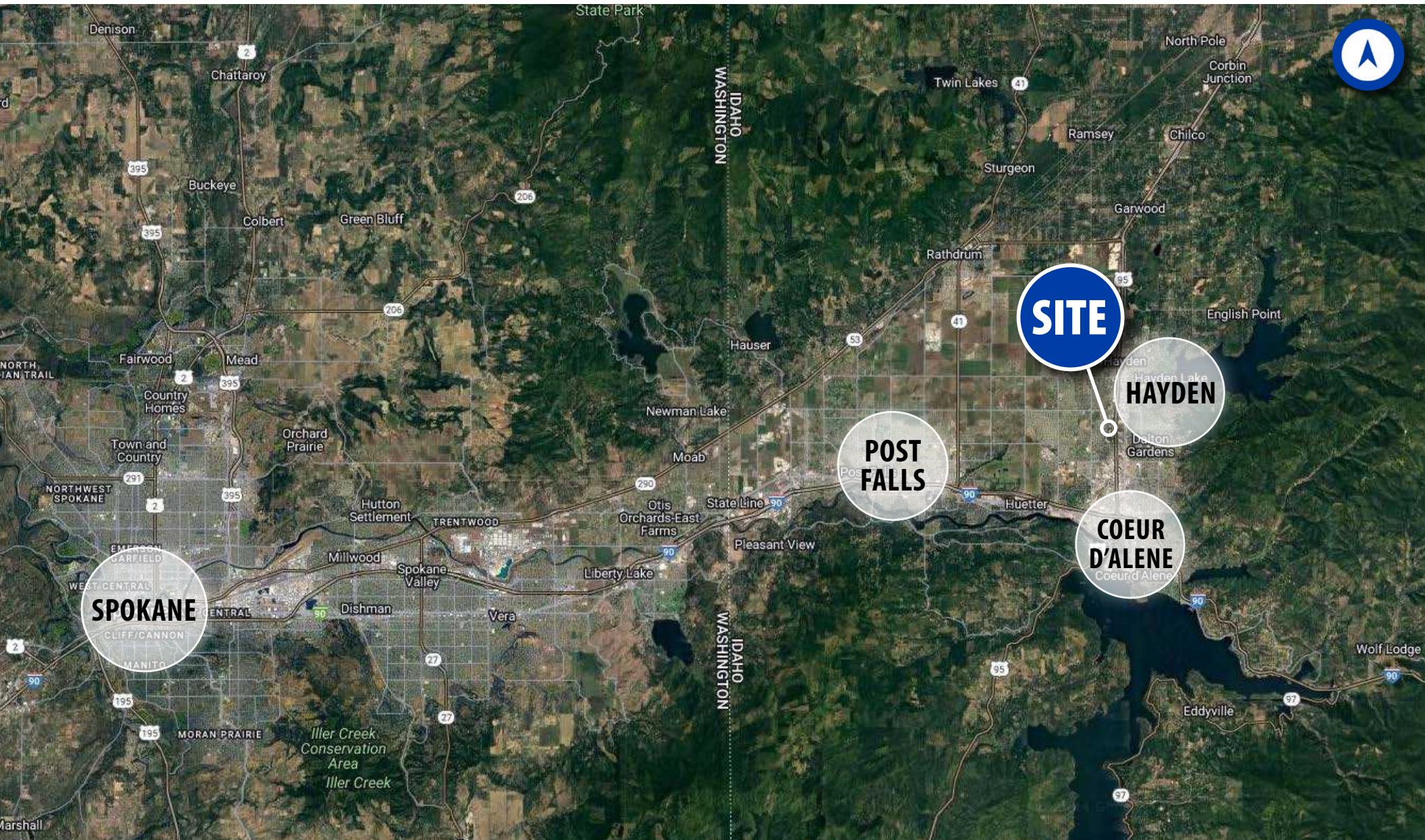


\$104,308

AERIAL MAP

12 MIN TO COEUR D'ALENE

35 MIN TO SPOKANE



600 W WILBER AVE

UPDATED: 10.15.2025

THIS PROPERTY IS EXCLUSIVELY MARKED BY TOK INLAND NORTHWEST LLC DBA TOK COMMERCIAL. This information was obtained from sources believed reliable but cannot be guaranteed. Any opinions or estimates are used for example only.

TOKCOMMERCIAL.COM