

Office Space For Lease

FIRST FLOOR | 527 SF | PRIME LAKE UNION LOCATION
1607 DEXTER AVE N, SEATTLE, WA 98109



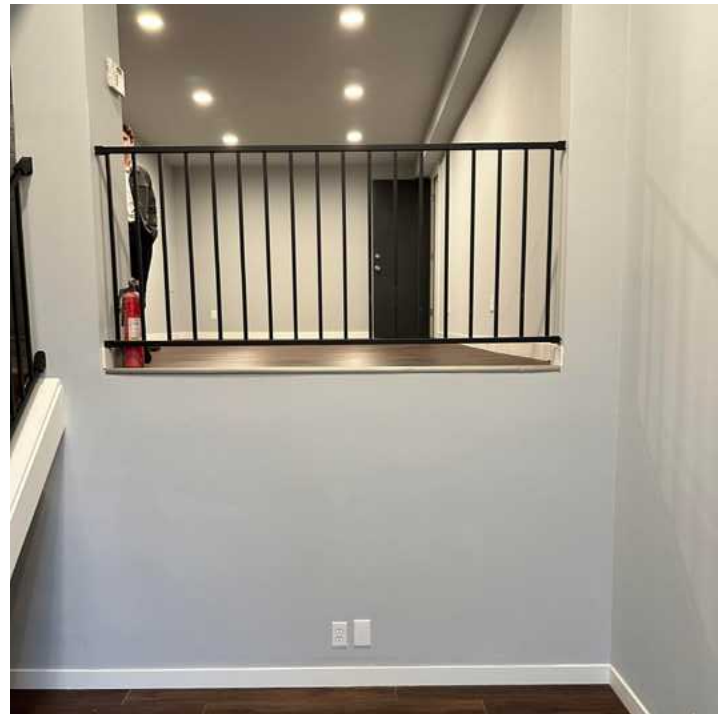
Building Highlights

Newly Renovated, Move-In Ready Office Space

Well-maintained property with onsite management

Positioned between Mercer Street and Aurora Avenue for convenient access

Parking stalls available – inquire about rates



FOR MORE INFO
CONTACT

JACK DEANE
JACK FRANZ
BOJIDAR GABROVSKI

jdeane@orioncp.com
jfranz@orioncp.com
bgabrovski@orioncp.com

206.707.1315
925.482.7232
847.275.8474

1218 Third Ave, Suite 2200
Seattle, WA 98101
www.orioncp.com

ORION
COMMERCIAL PARTNERS

Office Space For Lease

FIRST FLOOR | 527 SF | PRIME LAKE UNION LOCATION
1607 DEXTER AVE N, SEATTLE, WA 98109



Space Highlights

FLOOR: 1ST

AVAILABLE SPACE: 527 SF

Lease Rate: \$18/sf/yr NNN

Estimated NNN: \$5.51/sf/yr

Private Entry

Ideal for office or service-based businesses.

The information contained herein was obtained from sources believed reliable; however, ORION Commercial Partners LLC makes no guarantees, warranties or representations as to the completeness or accuracy thereof. The presentation of this property is submitted subject to errors, omissions, change of price or conditions prior to sale or lease, or withdrawal without notice.

Location Highlights

Excellent visibility near Lake Union waterfront

Surrounded by cafés, fitness studios, and creative offices

5-minute walk to transit on Westlake Ave

Quick access to South Lake Union, Fremont & Downtown



FOR MORE INFO
CONTACT

JACK DEANE
JACK FRANZ
BOJIDAR GABROVSKI

jdeane@orioncp.com
jfranz@orioncp.com
bgabrovski@orioncp.com

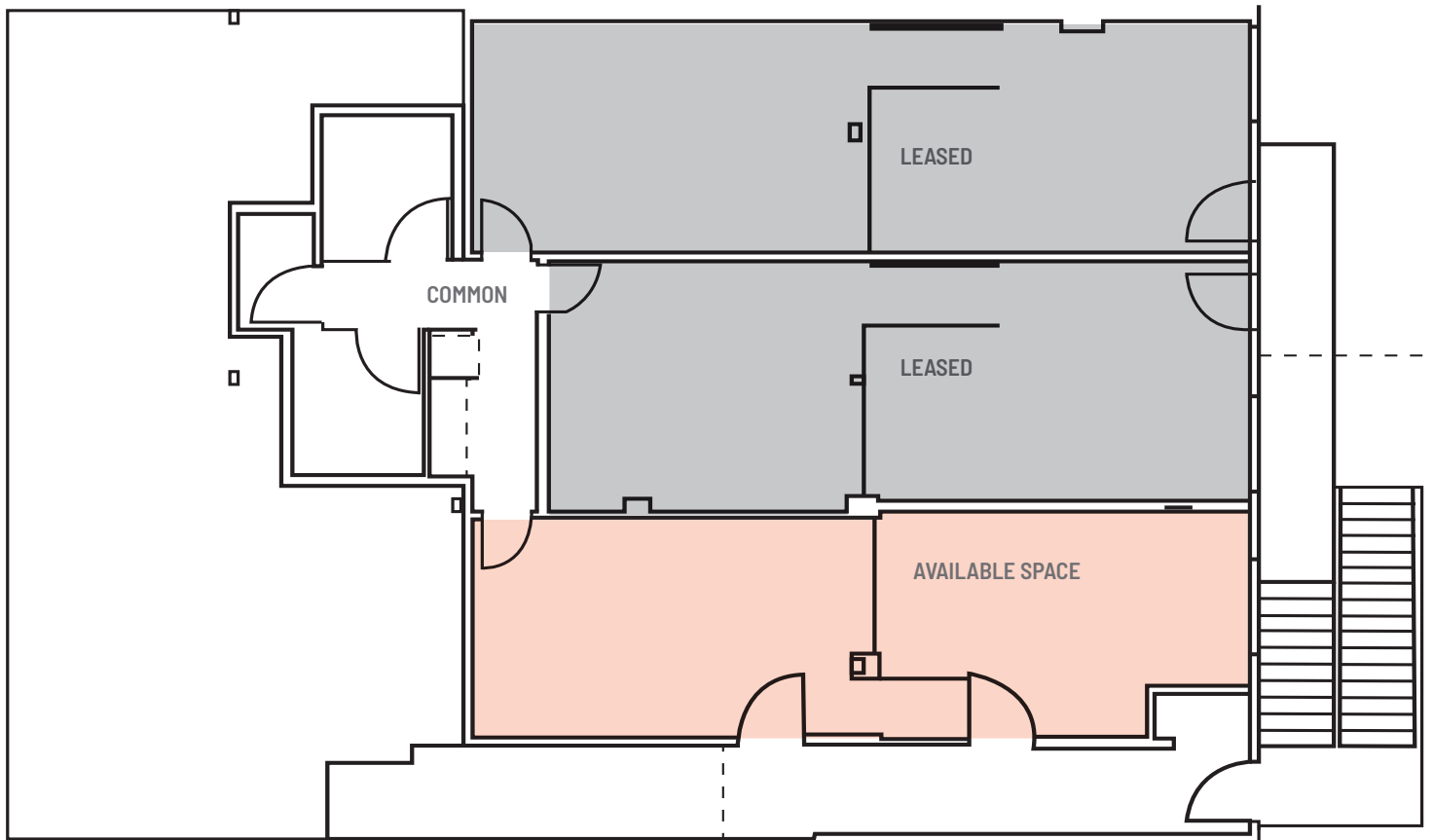
206.707.1315
925.482.7232
847.275.8474

1218 Third Ave, Suite 2200
Seattle, WA 98101
www.orioncp.com

ORION
COMMERCIAL PARTNERS

Office Space For Lease

FIRST FLOOR | 527 SF | PRIME LAKE UNION LOCATION
1607 DEXTER AVE N, SEATTLE, WA 98109



FOR MORE INFO
CONTACT

JACK DEANE
JACK FRANZ
BOJIDAR GABROVSKI

jdeane@orioncp.com
jfranz@orioncp.com
bgabrovski@orioncp.com

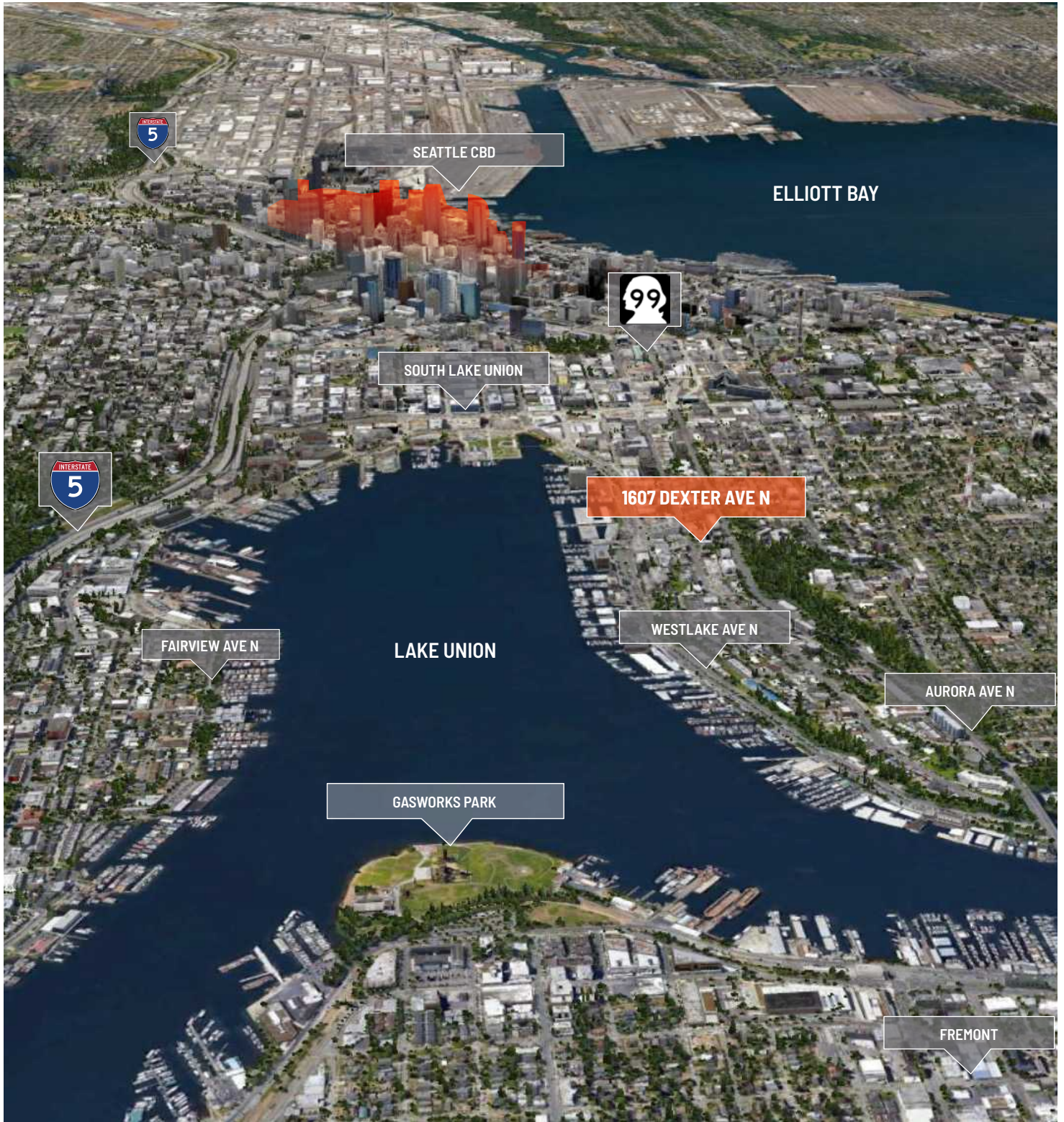
206.707.1315
925.482.7232
847.275.8474

1218 Third Ave, Suite 2200
Seattle, WA 98101
www.orioncp.com

ORION
COMMERCIAL PARTNERS

Office Space For Lease

FIRST FLOOR | 527 SF | PRIME LAKE UNION LOCATION
1607 DEXTER AVE N, SEATTLE, WA 98109



FOR MORE INFO
CONTACT

JACK DEANE
JACK FRANZ
BOJIDAR GABROVSKI

jdeane@orioncp.com
jfranz@orioncp.com
bgabrovski@orioncp.com

206.707.1315
925.482.7232
847.275.8474

1218 Third Ave, Suite 2200
Seattle, WA 98101
www.orioncp.com

ORION
COMMERCIAL PARTNERS