

# PARK 140

±6,180 – 15,379 SF  
office/flex/warehouse for lease in  
Bellevue near Overlake

## Contact

**TODD GAUTHIER**

425.450.1118

todd.gauthier@kidder.com

**JASON BLOOM**

425.450.1102

jason.bloom@kidder.com

[PARK140BELLEVUE.COM](http://PARK140BELLEVUE.COM)



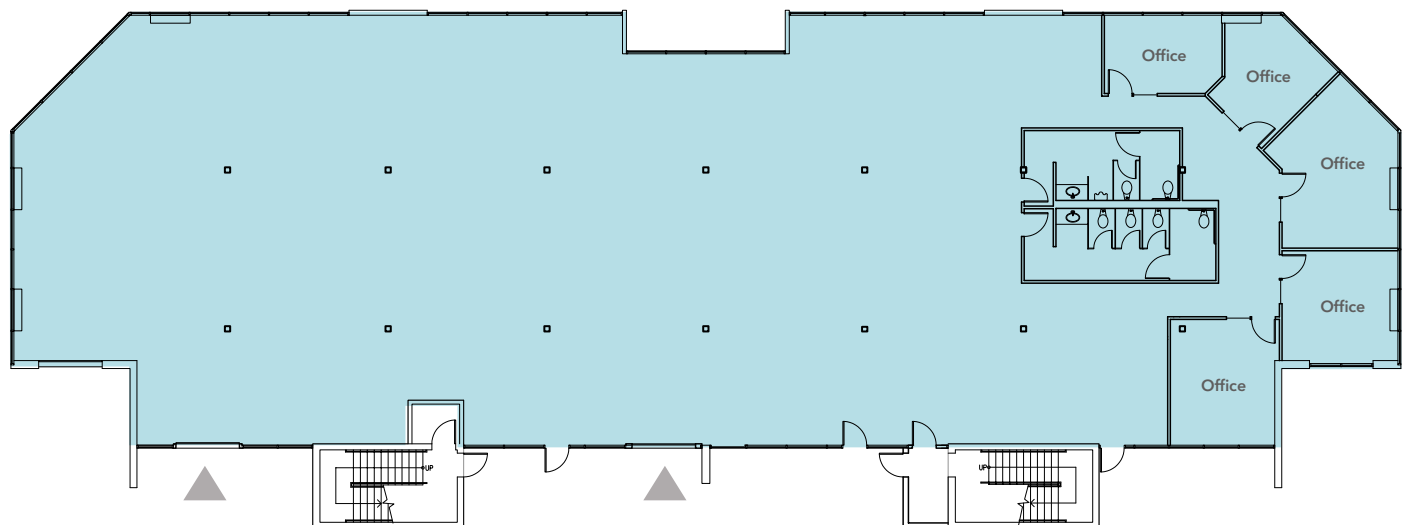
# PARK 140

## Suite D-100

### FIRST FLOOR

**DROPPED CEILINGS** and HVAC throughout

**2 ROLL-UP** doors



 AVAILABLE

**9,199 SF**  
AVAILABLE

**CALL BROKERS**  
FOR LEASE RATE

# PARK 140

## Suite D-200

### SECOND FLOOR

**DROPPED CEILINGS** and HVAC throughout



**6,180 SF**  
AVAILABLE

**CALL BROKERS**  
FOR LEASE RATE

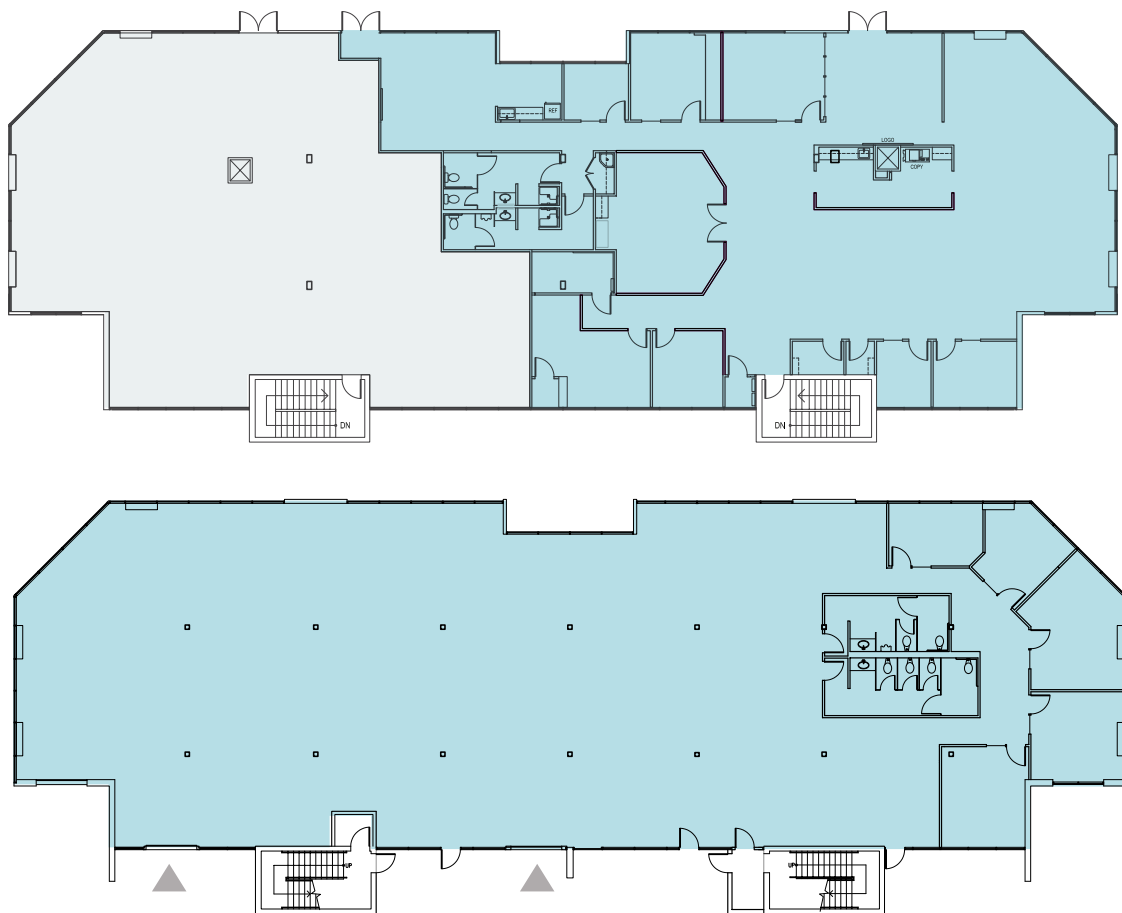
# PARK 140

## Suites D-100 + D-200

### FIRST & SECOND FLOORS

**DROPPED CEILINGS** and HVAC throughout

**2 ROLL-UP** doors



**15,379 SF**  
AVAILABLE

**CALL BROKERS**  
FOR LEASE RATE



Minutes from  
Overlake shopping  
and amenities, with  
access to East Link  
Light Rail.



EAST LINK LIGHT RAIL STATION

REDMOND

NE 40TH ST

OVERLAKE

PARK 140

520

INTERSTATE  
405

BEL-RED RD

NE 8TH ST

140TH AVE NE

BELLEVUE CBD

#### OVERLAKE SHOPPING

SAFeway	TRADER JOE'S	Fred Meyer
T Mobile	BevMo!	Walgreens
Marshalls	ROSS DRESS FOR LESS	CHASE
HARBOR FREIGHT	PETSMART	ALDI

#### OVERLAKE FOOD & DRINK

Red Robin GOURMET BURGERS & MORE	Starbucks	Applebee's GRILL & BAR
POTBELLY HANDICRAFT BAKERY	MERCURY'S COFFEE CO.	麵點館 DOUGH ZONE
85°C Dunkin'	ihop	MOD
Arby's	SHABURINA	





# PARK 140

2405 - 2515 140TH AVE NE, BELLEVUE, WA

**TODD GAUTHIER**

425.450.1118

[todd.gauthier@kidder.com](mailto:todd.gauthier@kidder.com)

**JASON BLOOM**

425.450.1102

[jason.bloom@kidder.com](mailto:jason.bloom@kidder.com)

[PARK140BELLEVUE.COM](http://PARK140BELLEVUE.COM)

This information supplied herein is from sources we deem reliable. It is provided without any representation, warranty, or guarantee, expressed or implied as to its accuracy. Prospective Buyer or Tenant should conduct an independent investigation and verification of all matters deemed to be material, including, but not limited to, statements of income and expenses. Consult your attorney, accountant, or other professional advisor.



**Kidder  
Mathews**