



BAY VIEW BUILDING

2911 BOND STREET, EVERETT, WA

BAY VIEW BUILDING

AVAILABLE SPACE

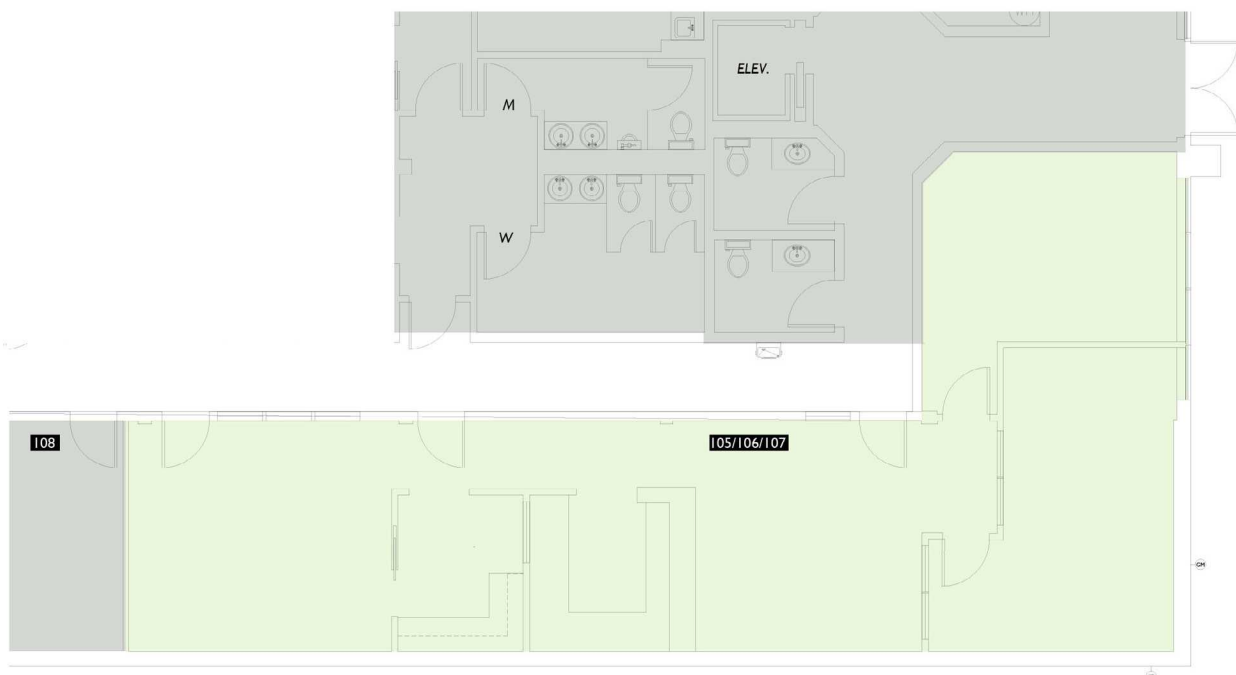
Suite	Size (SF)	Floorplan	Rate
105/106/107	1,457 SF	Click Here to View	\$19.50/SF/Yr. Net of Expenses

PROPERTY FEATURES

- Two-Story Office Building
- Rare, downtown Everett ample free surface parking
- Frontage on Bond Street
- Local, responsive building ownership and property management
- Proximity to downtown Everett amenities.

SUITE 105/106/107

1,457 SF



AERIAL OF BAY VIEW BUILDING



PARKING

BAY VIEW BUILDING



BAY VIEW BUILDING

2911 BOND STREET, EVERETT, WA



CONTACTS

Erik Larson
Senior Vice President
+1 425 462 6954
erik.larson@cbre.com

Ric Brandt
Senior Vice President
+1 425 462 6901
ric.brandt@cbre.com

John Bauer
Senior Vice President
+1 425 462 6906
john.bauer@cbre.com

CBRE

© 2024 CBRE, Inc. All rights reserved. This information has been obtained from sources believed reliable but has not been verified for accuracy or completeness. CBRE, Inc. makes no guarantee, representation or warranty and accepts no responsibility or liability as to the accuracy, completeness, or reliability of the information contained herein. You should conduct a careful, independent investigation of the property and verify all information. Any reliance on this information is solely at your own risk. CBRE and the CBRE logo are service marks of CBRE, Inc. All other marks displayed on this document are the property of their respective owners, and the use of such marks does not imply any affiliation with or endorsement of CBRE. Photos herein are the property of their respective owners. Use of these images without the express written consent of the owner is prohibited.