



Colliers



## Warehouse/Office For Lease

### Derek Heed

Executive Vice President  
425 453 3133  
derek.heed@colliers.com

### Kendra Mills

Sr. Client Services Specialist  
425 453 3135  
kendra.mills@colliers.com

### Jack Dennis

Associate  
206 353 3912  
jack.dennis@colliers.com

### Jack Heed

Associate  
425 412 0409  
jack.heed@colliers.com

### Colliers International

11225 SE 6th SE, Suite 240  
Bellevue, WA 980004  
colliers.com

## Park 144

19400 144th Avenue NE Woodinville, WA 98072

### Available Space - Building 6

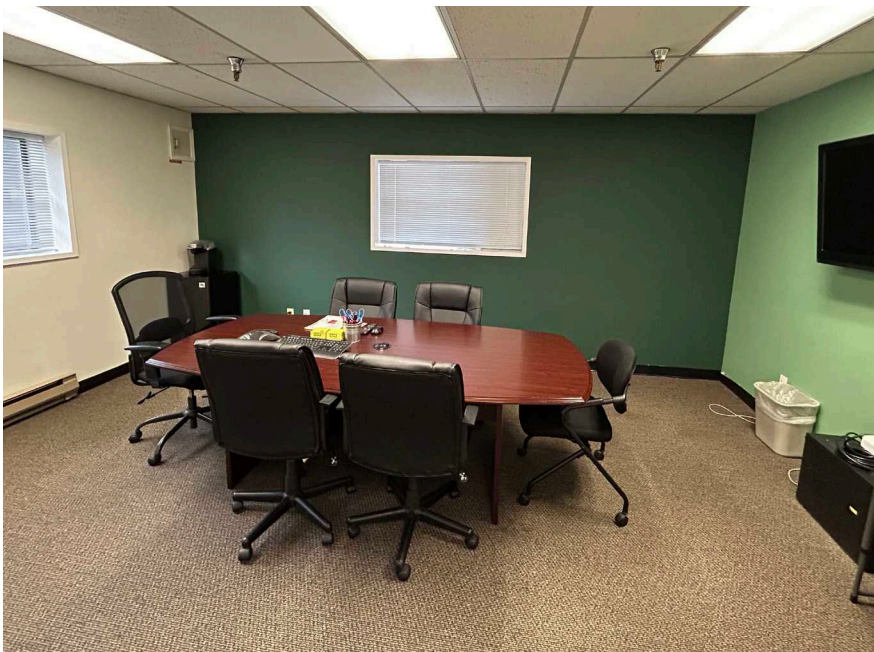
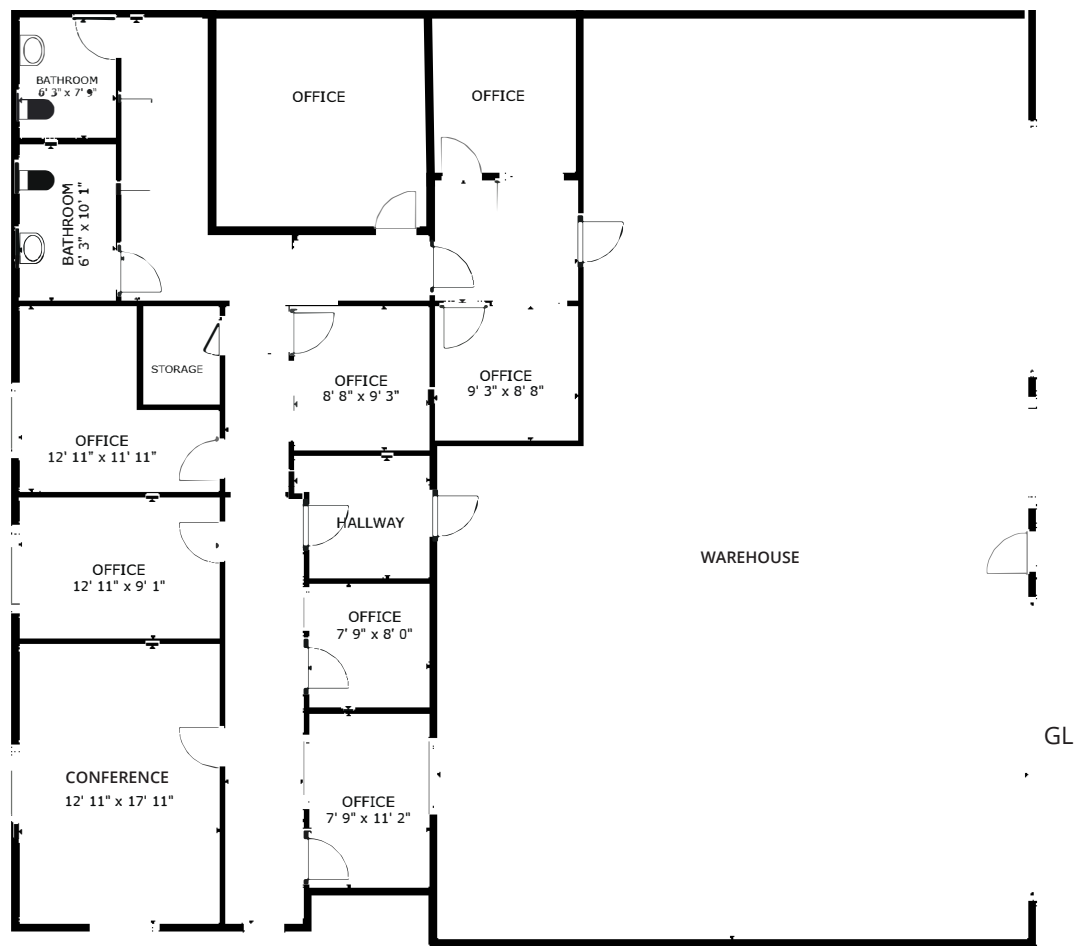
- 3,963 - 8,713 SF total ( $\pm$  2,000 SF office)
- Office layout includes: conference room, multiple private offices, restrooms, kitchenette, server room and work room
- One 10' x 14' grade-level door, one 10' x 16' grade-level door

### Property Details

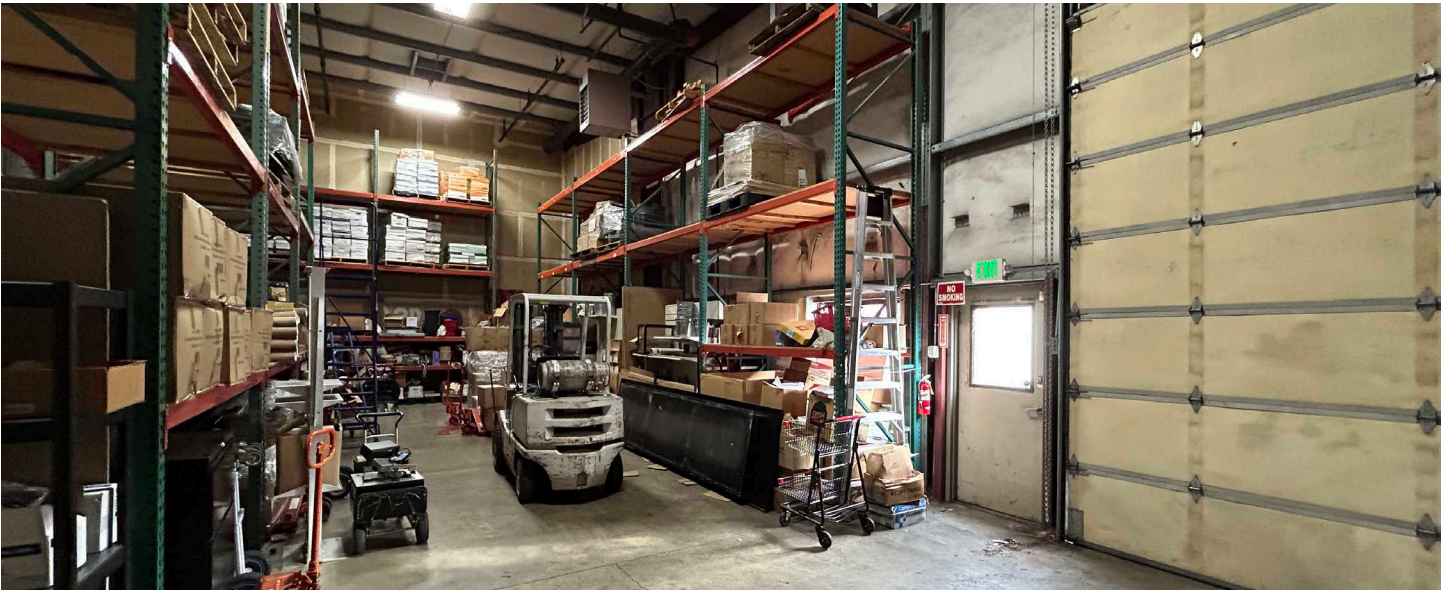
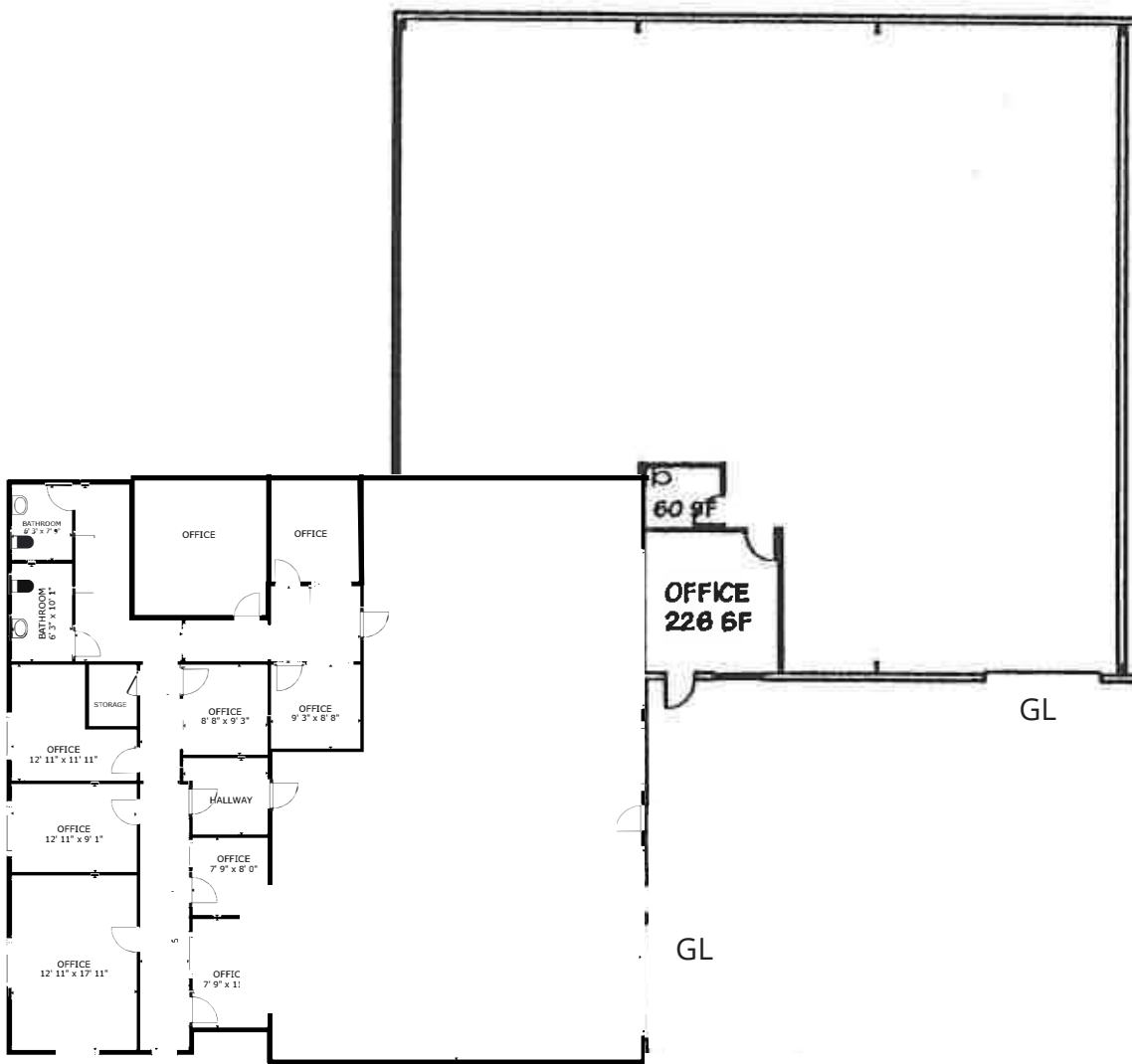
- ~20' clear height in warehouse
- Easy access to SR 522
- Rental rates:
  - Office - \$2.00/SF/month
  - Warehouse - \$1.40/SF/month
  - NNNs - \$0.34/SF/month



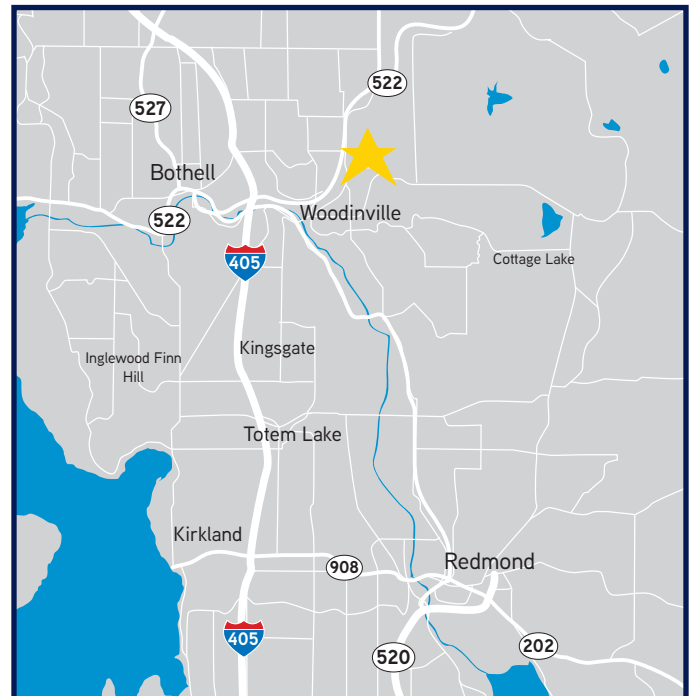
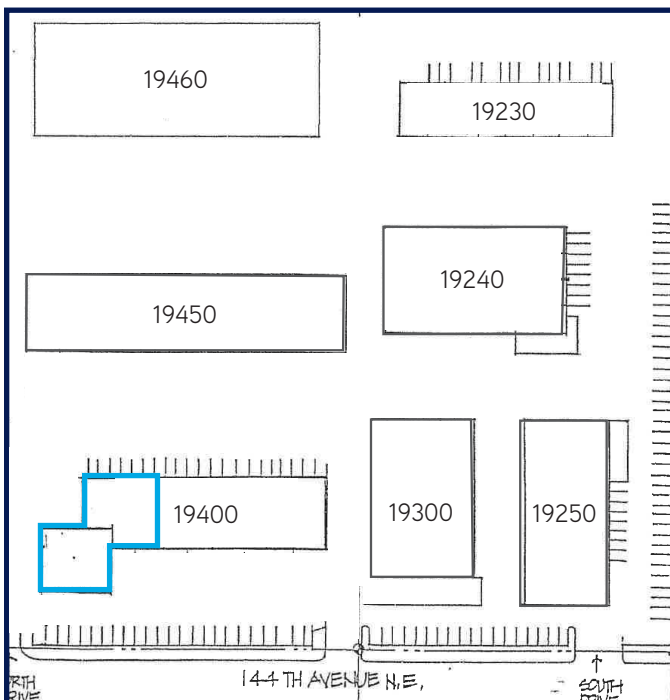
Suite E - 3,963 SF



Suites D/E - 8,713 SF







**Derek Heed**  
Executive Vice President  
425 453 3133  
derek.heed@colliers.com

**Kendra Mills**  
Sr Client Services Specialist  
425 453 3135  
kendra.mills@colliers.com

**Jack Dennis**  
Associate  
206 353 3912  
jack.dennis@colliers.com

**Jack Heed**  
Associate  
425 412 0409  
jack.heed@colliers.com