

RETAIL FOR LEASE

# TAVIN

8511 15TH AVE NW, SEATTLE

*10,000 SF Retail and Restaurant Space  
at Crown Hill's Gateway Intersection.*





TAVIN 8511 15TH AVE NW

*Tavin features approximately 10,000 SF of high visibility retail for lease at the gateway intersection to Ballard's Crown Hill, Blue Ridge and North Beach neighborhoods. Strong demographics, great neighborhoods, a high walk score of 89 and transit on all four corners create a multitude of retail possibilities.*

**AVAILABLE NOW**

1,348 - 3,865 SF

RETAIL 120 2,329 SF

RETAIL 122 3,865 SF

RETAIL 123 1,472 SF

RETAIL 126 1,348 SF

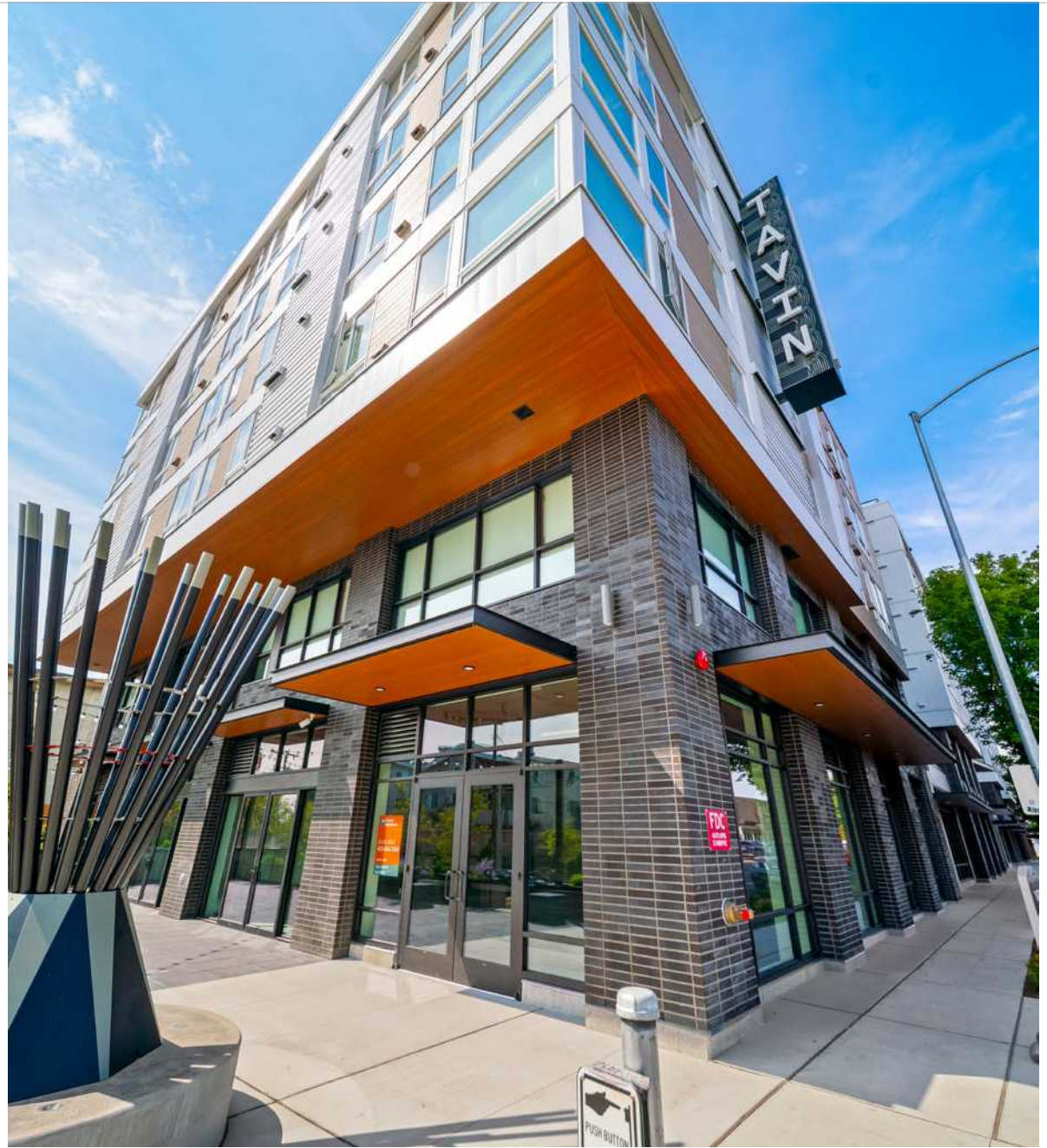
CAN BE  
COMBINED

**\$35.00**

PSF/YEAR + NNN

**\$10.00**

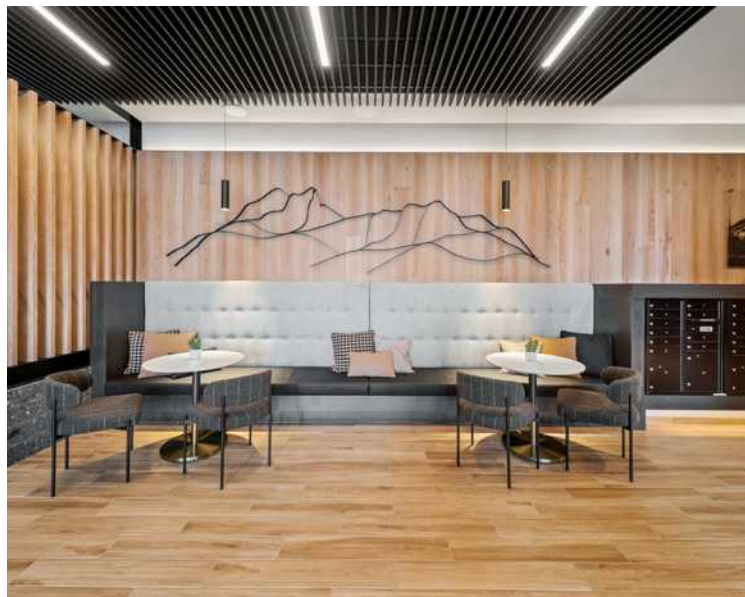
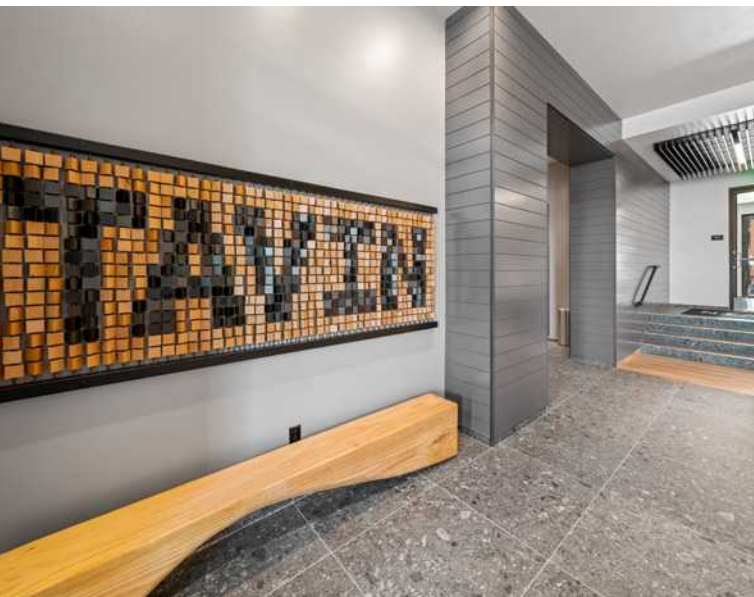
ESTIMATED NNN



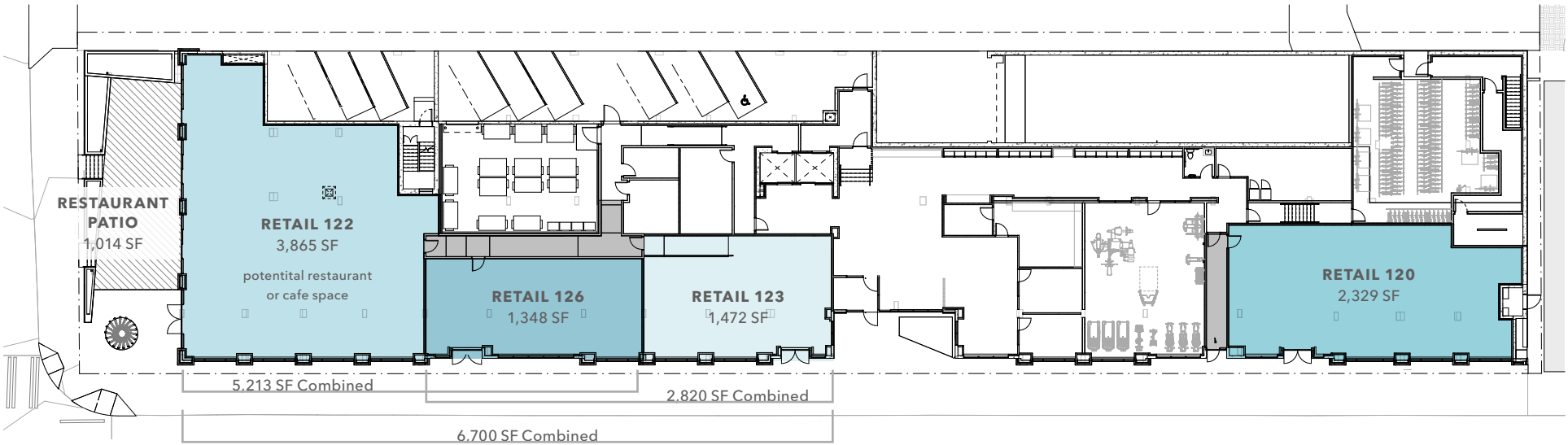
AVAILABLE FOR LEASE

KIDDER MATHEWS





# FLOOR PLAN



## HIGHLIGHTS

- 

**NEW CONSTRUCTION**
- 

**GREAT CORNER RESTAURANT SPACE**
- 

**SW PATIO**
- 

**196 UNITS**
- 

**TYPE 1 VENTING**
- 

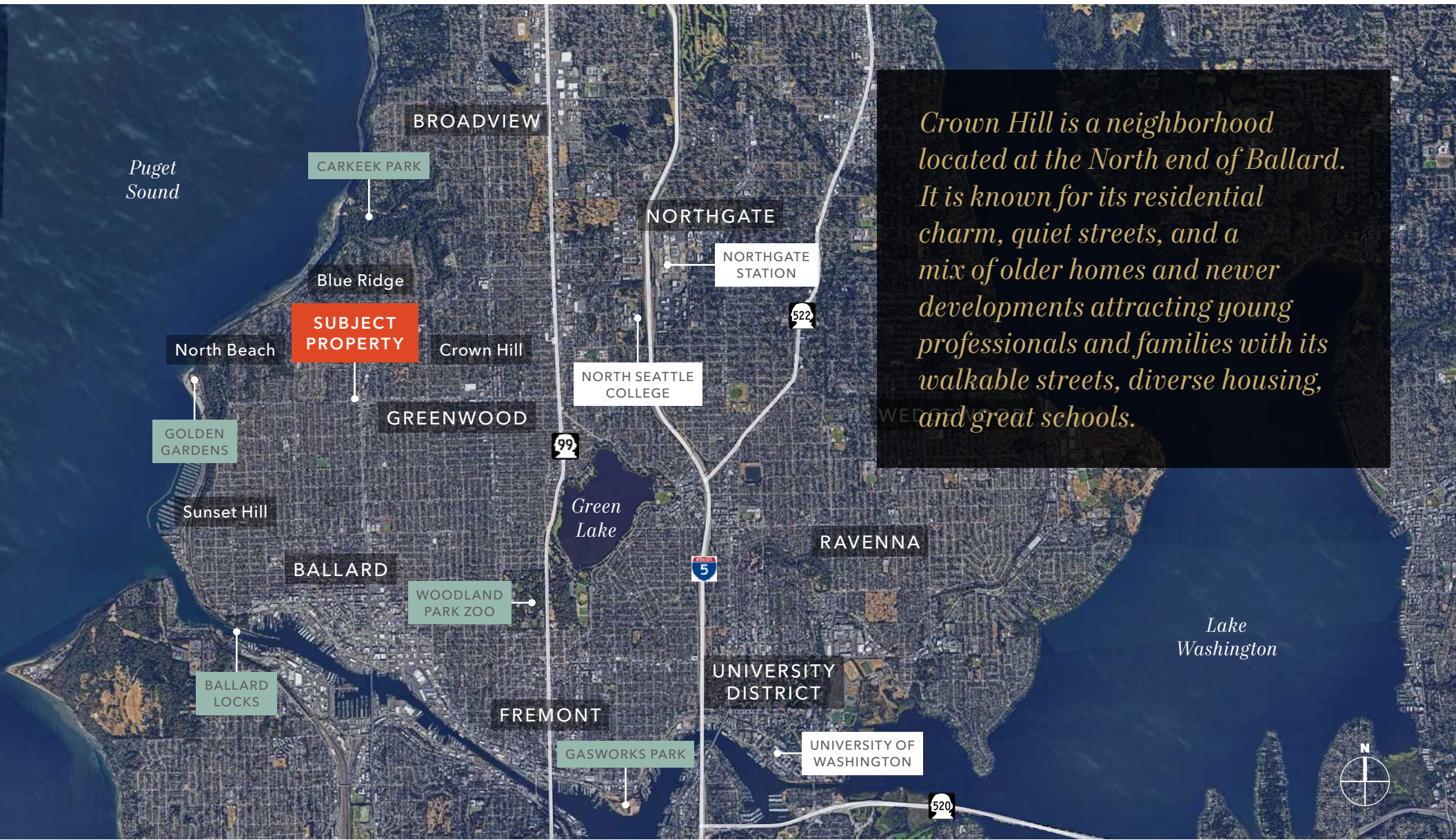
**EXCELLENT WALK SCORE**
- 

**BEAUTIFUL OUTDOOR PUBLIC SPACE**
- 

**IN-GROUND GREASETRAP**
- 

**HIGH VISIBILITY INTERSECTION WITH 12,824+ VPD ON 15TH AVE NW & 4,821+ VPD ON NW 85TH ST**





*Crown Hill is a neighborhood located at the North end of Ballard. It is known for its residential charm, quiet streets, and a mix of older homes and newer developments attracting young professionals and families with its walkable streets, diverse housing, and great schools.*



### THE OPPORTUNITY

Tavin features approximately 10,000 SF of high visibility, demiseable, street retail and restaurant space adjacent to the Metropolitan Market, a high-end grocery, at the gateway intersection to Ballard's Crown Hill, Blue Ridge and North Beach neighborhoods. Strong demographics, great neighborhoods, a high walk score of 89 and transit on all four corners create a multitude of retail possibilities here.

The restaurant opportunity is located at the corner of NW 85th St and 15th Ave NW. It features a spacious southwest-facing patio, a grand corner entrance with a public art installation, 12'4" clear height ceilings, and a large window line that offers excellent signage potential. This prime spot anchors the 196-unit property.

### CROWN HILL AND SURROUNDING NEIGHBORHOODS

Crown Hill is a character rich neighborhood in the northwest part of Seattle, known for its residential charm and community-oriented atmosphere. Crown Hill has a range of local businesses, including grocery stores, cafes, restaurants, and specialty shops. The neighborhood has seen steady development with new residential projects and improvements to infrastructure, enhancing its appeal to new residents. Crown Hill's real estate market is competitive, with a mix of older homes and new construction. The neighborhood offers a balance of affordability and quality of life, attracting a diverse group of residents.

The nearby Blue Ridge and North Beach neighborhoods offer appealing high end residential options with access to natural beauty and a range of amenities including waterfront community clubs. Blue Ridge is known for its upscale, community-focused atmosphere and stunning views, while North Beach provides a more relaxed, eclectic environment with a slightly more affordable housing market. Both neighborhoods benefit from their proximity to parks, beaches, and the scenic Puget Sound, making them desirable places to live in Seattle.







# DEMOGRAPHICS

## POPULATION

	1 Mile	3 Miles	5 Miles
2020 CENSUS	29,630	174,489	398,169
2010 CENSUS	26,354	148,424	338,061
2024 ESTIMATED	30,051	179,262	409,897
2029 PROJECTED	31,494	186,616	429,021

## HOUSEHOLD INCOME

	1 Mile	3 Miles	5 Miles
2024 MEDIAN	\$177,765	\$147,421	\$142,188
2029 MEDIAN PROJECTED	\$181,354	\$149,968	\$144,105
2024 AVERAGE	\$230,699	\$195,517	\$189,735
2029 AVERAGE PROJECTED	\$235,840	\$200,148	\$192,492

## HOUSEHOLDS

	1 Mile	3 Miles	5 Miles
2024 ESTIMATED	13,086	86,946	191,720
2029 PROJECTED	13,559	89,881	199,947
HOUSING UNITS OWNER-OCCUPIED	8,759	41,648	87,371
HOUSING UNITS RENTER-OCCUPIED	4,327	45,297	104,349

89

WALK SCORE -  
VERY WALKABLE

51

TRANSIT SCORE -  
GOOD TRANSIT

74

BIKE SCORE -  
VERY BIKEABLE



# TAVIN AT 8511 15TH AVE NW

*Exclusively leased by*

**KELLY GADDIS**  
Senior Vice President  
425.450.1136  
kelly.gaddis@kidder.com

**MIA PONCE**  
Senior Associate  
425.450.1137  
mia.ponce@kidder.com

**KIDDER.COM**

This information supplied herein is from sources we deem reliable. It is provided without any representation, warranty, or guarantee, expressed or implied as to its accuracy. Prospective Buyer or Tenant should conduct an independent investigation and verification of all matters deemed to be material, including, but not limited to, statements of income and expenses. Consult your attorney, accountant, or other professional advisor.

