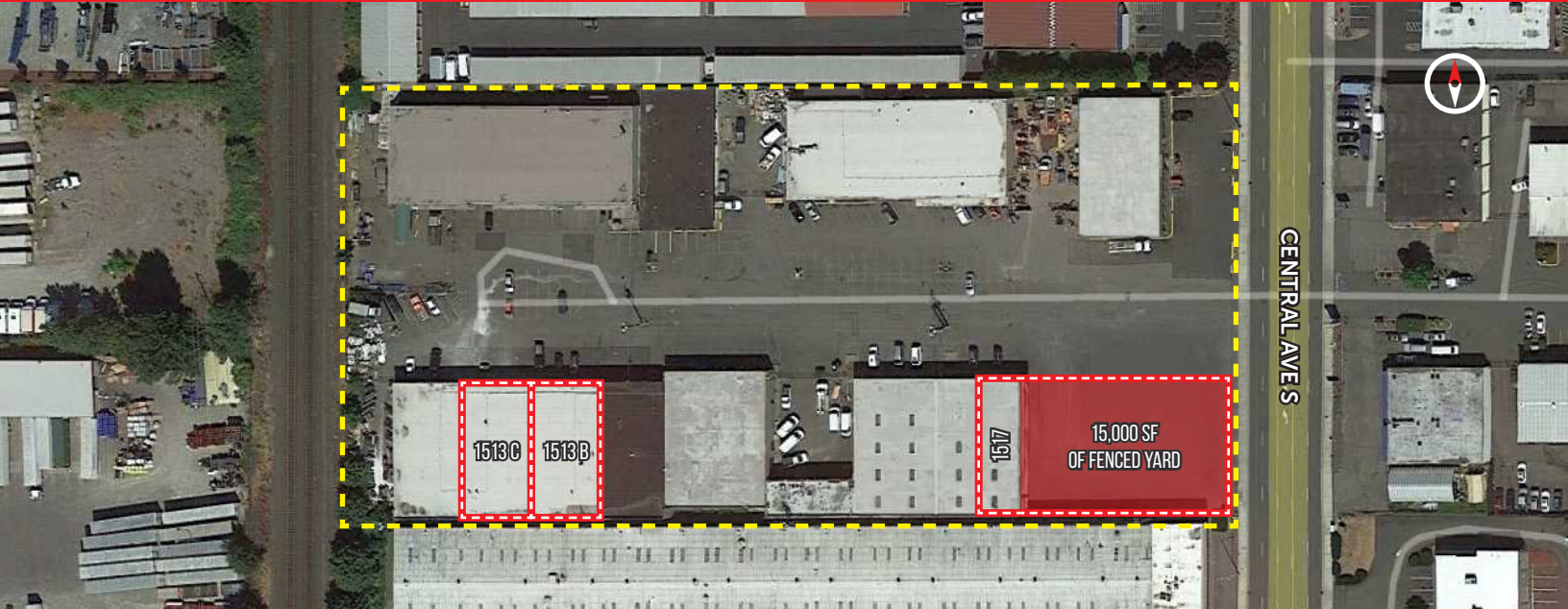


TOTEM INDUSTRIAL PARK

FOR LEASE: WAREHOUSE & FENCED YARD

1501 – 1531 CENTRAL AVE S | KENT, WA 98032

3 MONTHS FREE ON A 3 YEAR DEAL & 5 MONTHS FREE ON A 5 YEAR DEAL



LEASE INFORMATION

Suite	Available Size	Office Size	Yard Size	Loading	Available Date
1517	2,677 SF	327 SF	15,000 SF	1 GL Door	Now
1513 B	4,667 SF	641 SF	N/A	1 GL Door	Now
1513 C	4,667 SF	1,009 SF	N/A	1 GL Door	Now

Comment: Suites 1513 B & 1513 C can be leased together for a total of 9,334 SF

PROPERTY HIGHLIGHTS

- Grade-level loading
- 14' - 16' clear height
- Abundant parking
- New front security gate
- Generous truck access
- 3-phase power
- Space is fully refreshed
- LED lighting
- Call brokers for rates



GRIFFIN DAY
206.787.1474
gday@neilwalter.com

SPENCER MEAD
206.787.1476
smead@neilwalter.com

JIM HONAN
206.787.1464
jhonan@neilwalter.com

All information references in this document are approximate. The information contained herein is contained from sources deemed reliable. It is provided without representation, warranty, or guarantee, expressed or implied as to accuracy. Prospective buyer or tenant should conduct its own independent investigation relating to the property, government codes and regulations, allowed uses, and all other matters, regardless of whether they are referred to or contained in this document.

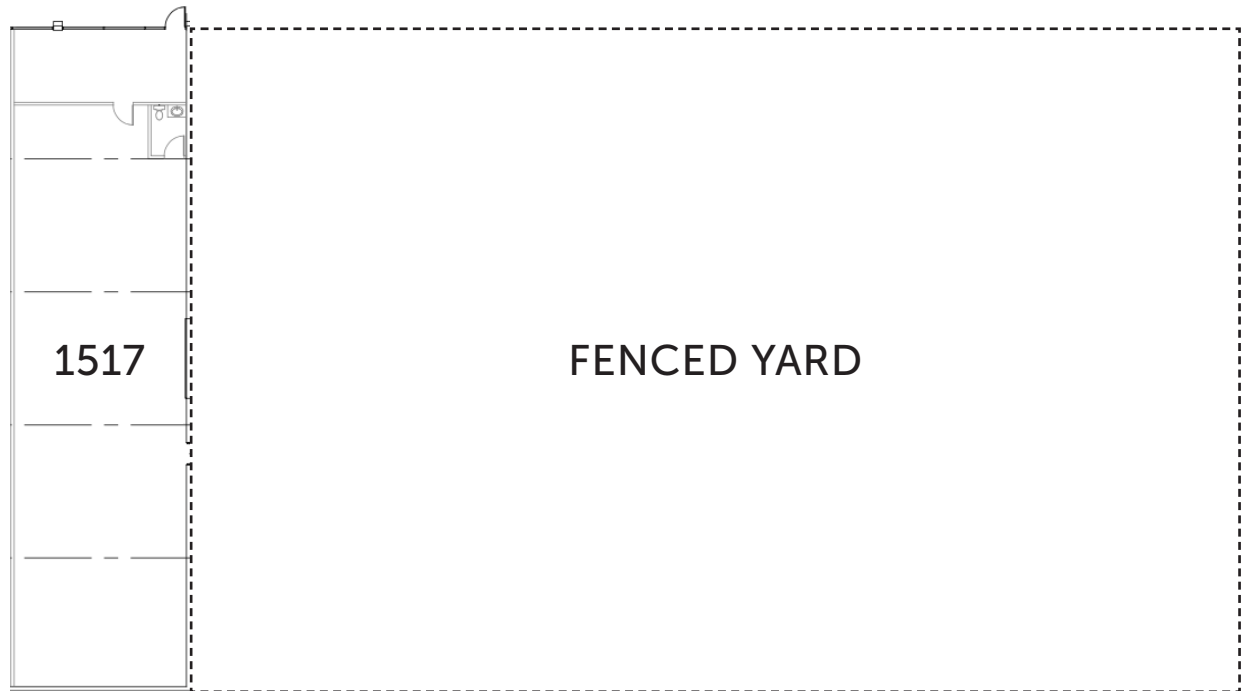
TOTEM INDUSTRIAL PARK

1501 – 1531 CENTRAL AVE S | KENT, WA 98032



NEIL WALTER
COMPANY

Suite	Available Size	Office Size	Yard Size	Loading	Available Date
1517	2,677 SF	327 SF	15,000 SF	1 GL Door	Now



GRIFFIN DAY

206.787.1474

gday@neilwalter.com

SPENCER MEAD

206.787.1476

smead@neilwalter.com

JIM HONAN

206.787.1464

jhonan@neilwalter.com

206.787.1800
www.neilwalter.com

550 S Michigan St
Seattle, WA 98108

All information references in this document are approximate. The information contained herein is contained from sources deemed reliable. It is provided without representation, warranty, or guarantee, expressed or implied as to accuracy. Prospective buyer or tenant should conduct its own independent investigation relating to the property, government codes and regulations, allowed uses, and all other matters, regardless of whether they are referred to or contained in this document.

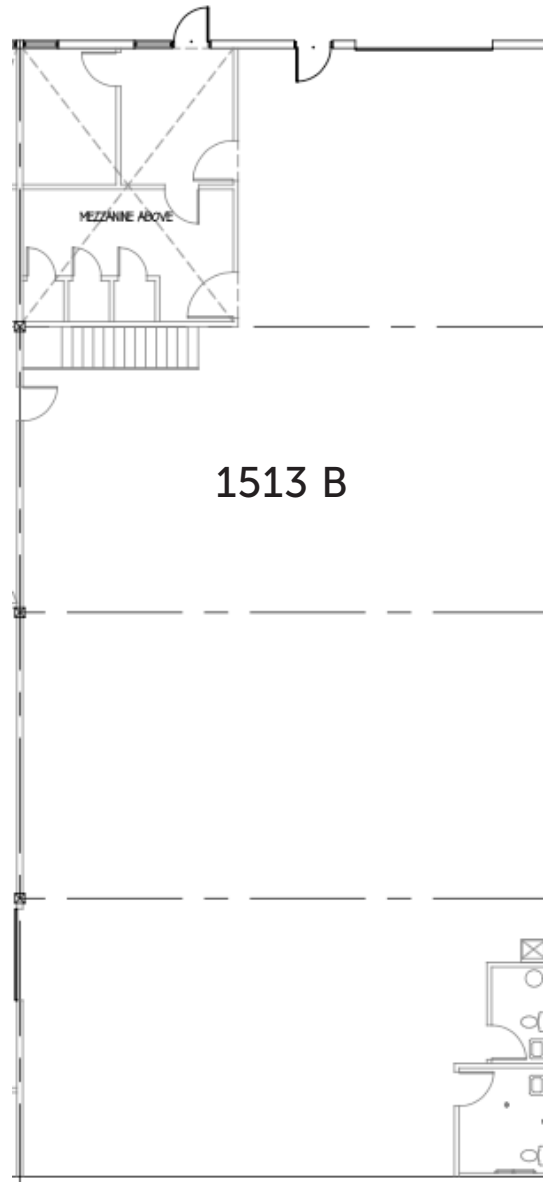
TOTEM INDUSTRIAL PARK

1501 – 1531 CENTRAL AVE S | KENT, WA 98032



NEIL WALTER
COMPANY

Suite	Available Size	Office Size	Yard Size	Loading	Available Date
1513 B	4,667 SF	641 SF	N/A	1 GL Door	Now
Comment: Can be leased with Suite 1513 C for a total of 9,334 SF					



GRIFFIN DAY
206.787.1474
gday@neilwalter.com

SPENCER MEAD
206.787.1476
smead@neilwalter.com

JIM HONAN
206.787.1464
jhonan@neilwalter.com

206.787.1800
www.neilwalter.com

550 S Michigan St
Seattle, WA 98108

All information references in this document are approximate. The information contained herein is contained from sources deemed reliable. It is provided without representation, warranty, or guarantee, expressed or implied as to accuracy. Prospective buyer or tenant should conduct its own independent investigation relating to the property, government codes and regulations, allowed uses, and all other matters, regardless of whether they are referred to or contained in this document.

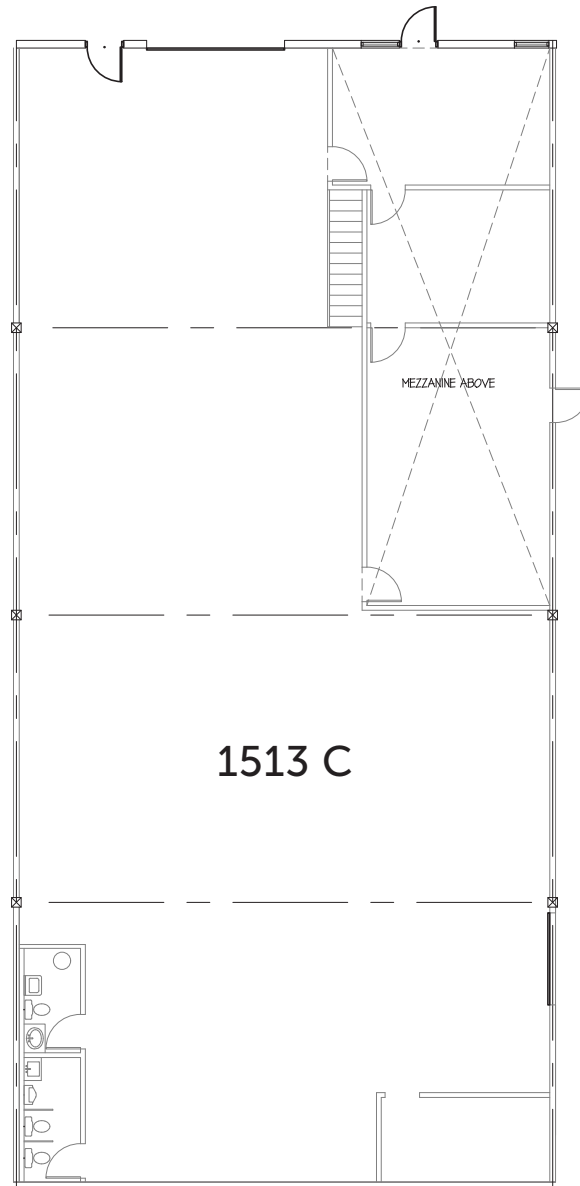
TOTEM INDUSTRIAL PARK

1501 – 1531 CENTRAL AVE S | KENT, WA 98032



NEIL WALTER
COMPANY

Suite	Available Size	Office Size	Yard Size	Loading	Available Date
1513 C	4,667 SF	1,009 SF	N/A	1 GL Door	Now
Comment: Can be leased with Suite 1513 B for a total of 9,334 SF					



GRIFFIN DAY
206.787.1474
gday@neilwalter.com

SPENCER MEAD
206.787.1476
smead@neilwalter.com

JIM HONAN
206.787.1464
jhonan@neilwalter.com

206.787.1800
www.neilwalter.com

550 S Michigan St
Seattle, WA 98108

All information references in this document are approximate. The information contained herein is contained from sources deemed reliable. It is provided without representation, warranty, or guarantee, expressed or implied as to accuracy. Prospective buyer or tenant should conduct its own independent investigation relating to the property, government codes and regulations, allowed uses, and all other matters, regardless of whether they are referred to or contained in this document.