



619 2nd Avenue
Seattle, WA 98104



[CLICK TO VISIT - thebroderickbuilding.com](http://thebroderickbuilding.com)

Prime retail space available in historic Pioneer Square.

The Broderick Building is conveniently located on the corner of 2nd Avenue and Cherry Street at the intersection of Pioneer Square, the Central Business District and the Seattle waterfront development and adjacent to the Smith Tower and within walking distance of the Seattle Ferry and Water taxi terminal. This section of the city is known for its vibrant cultural scene and home to many notable restaurants and bars such as Damn the Weather, Cafe Hitchcock, Bar Solea, Ill Terrazzo Carmine, and many more.

Prime corner second-generation cafe space available for lease. Seeking an all-day operator to activate this corner in the heart of the city.



Pioneer Square Neighborhood

1. Collins Pub
2. Damn the Weather
3. Il Terrazzo Carmine
4. Shawn O'Donnell's American Grill & Irish Pub
5. Tat's Deli
6. Ohsun
7. Cone & Steiner
8. Stonington Gallery
9. Foster/White Gallery
10. The Marble Room
11. Bill Speidels Underground Tour
12. Flatstick Pub
13. 13 Coins
14. Cafe Hitchcock
15. Bar Solea
16. Metropolitan Grill
17. Talyor Shellfish
18. Caffè Umbria
19. Mod Pizza
20. The Observatory Bar @ Smith Tower
21. General Porpoise
22. Foundry Vineyards

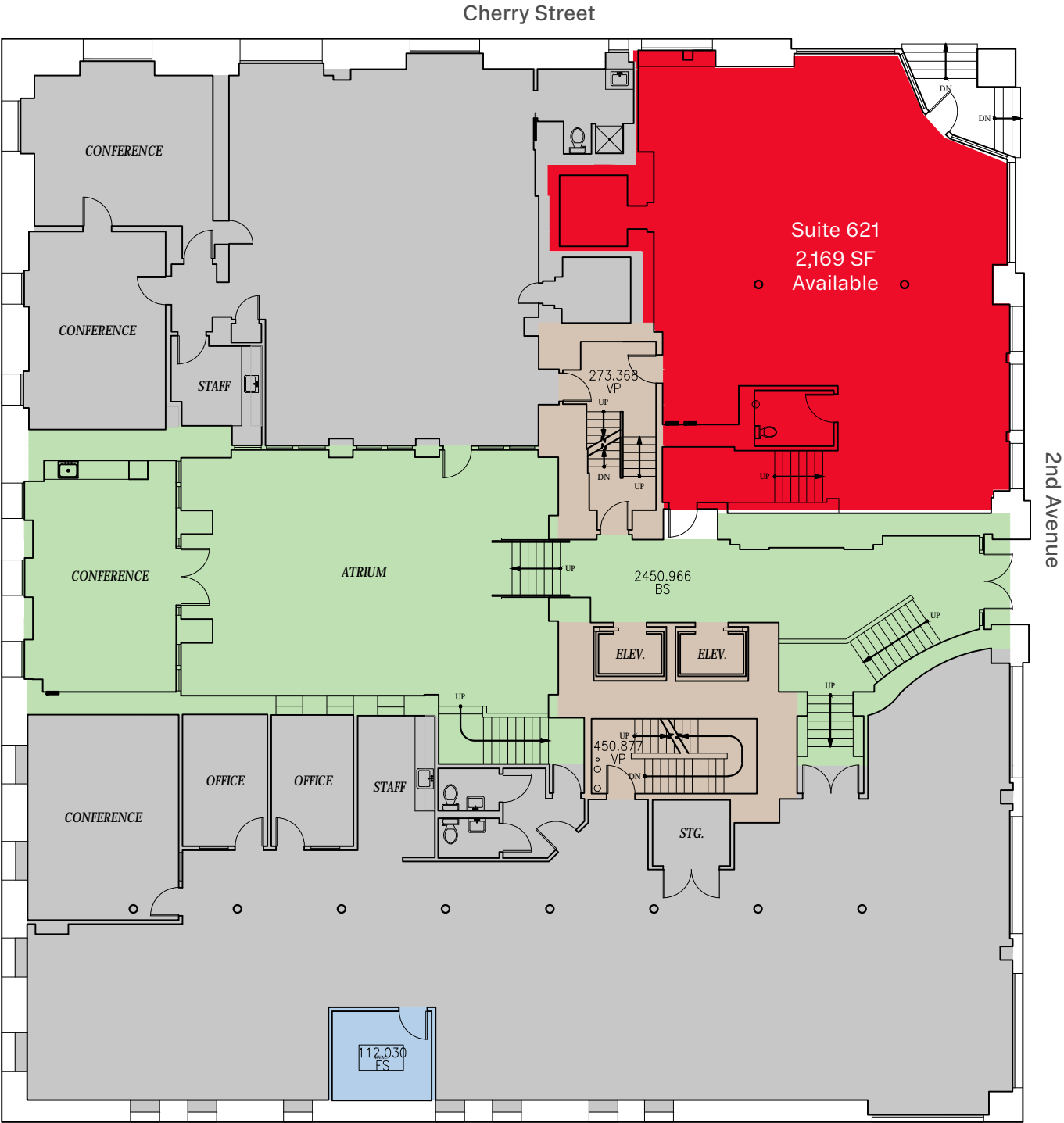


STREET LEVEL FLOOR PLAN

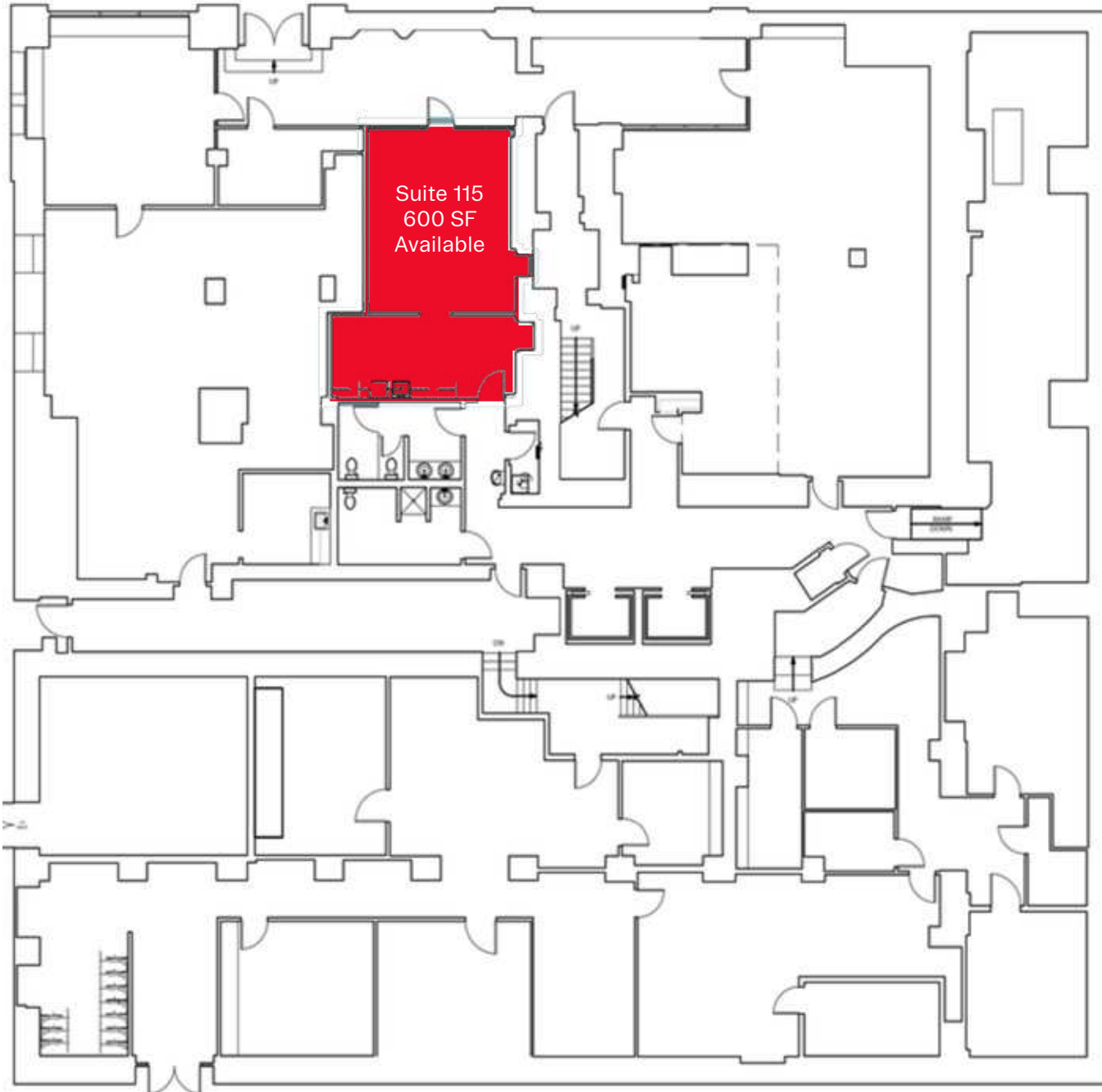
SECOND-GENERATION
CAFE SPACE

FOR LEASE

Suite 621



Cherry Street



2nd Avenue

STREET LEVEL FLOOR PLAN

SUITE 115 600 SF AVAILABLE

Refreshed second generation
retail space fronting Cherry
Avenue. Perfect fit for small
office or studio space.



Demographics



AVERAGE HOUSEHOLD INCOME:

1-Mile: \$111,321
2-Mile: \$127,506
3-Mile: \$136,909



POPULATION:

1 Mile: 55,778
2 Mile: 169,170
3 Mile: 237,853



TRAFFIC COUNTS:

18,421 Vehicles per day
@1st Ave & Cherry Street N



The BRODERICK BUILDING

619 2nd Avenue, Seattle, WA 98104

Tiffini Connell

tiffini@wccommercialrealty.com
206 854 1925

Avery Connell

avery@wccommercialrealty.com
206 475 9637

DISCLAIMER: The above information has been secured from sources believed to be reliable, however, no representations are made to its accuracy. Prospective tenants or buyers should consult their professional advisors and conduct their own independent investigation. Site plan and configuration are subject to change. Properties are subject to change in price and/or availability without notice. West Coast Commercial Realty, LLC

MEMBER OF
SITE SOURCE
RETAIL BROKER NETWORK

CBA

ICSC

CoStar

WCCR | West Coast
Commercial
Realty

206 283 5212
wccommercialrealty.com

