



PA

1307 CORNWALL

1307 CORNWALL AVE STE 3 | BELLINGHAM, WA 98225

1307 CORNWALL AVE STE 3
BELLINGHAM, WA 98225



6,800 SF

SPACE AVAILABLE

\$15

PER SQUARE FOOT



92k
TOTAL
POPULATION

78k
DAYTIME
POPULATION

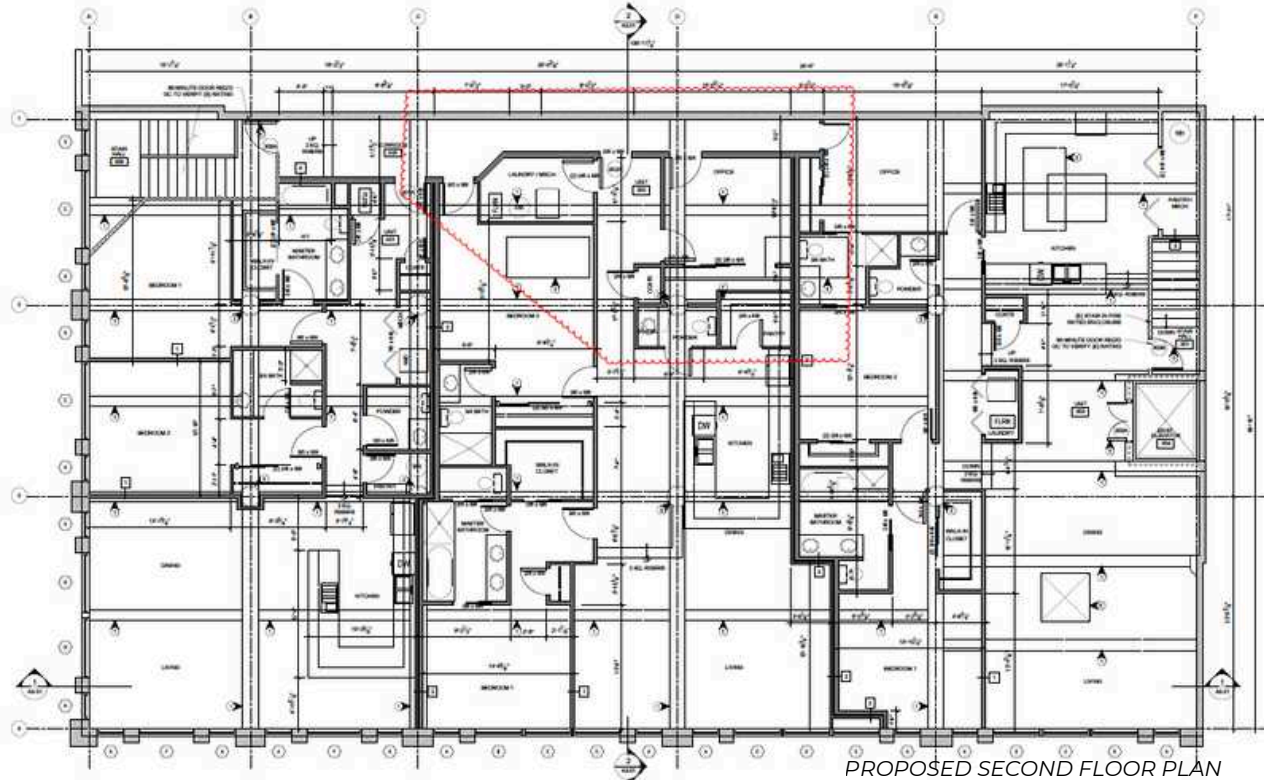
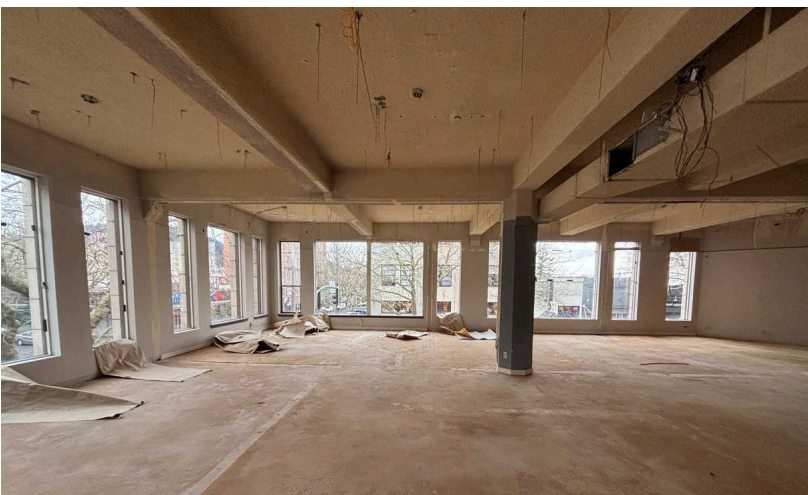
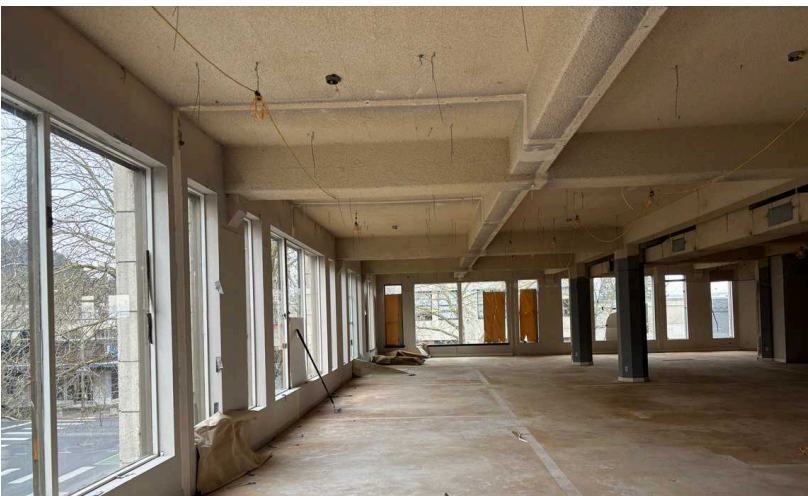
\$104k
AVG. HOUSEHOLD
INCOME

5.9k
BUSINESSES

78%
ADULTS WITH
COLLEGE EDUCATION

48k
EMPLOYEES

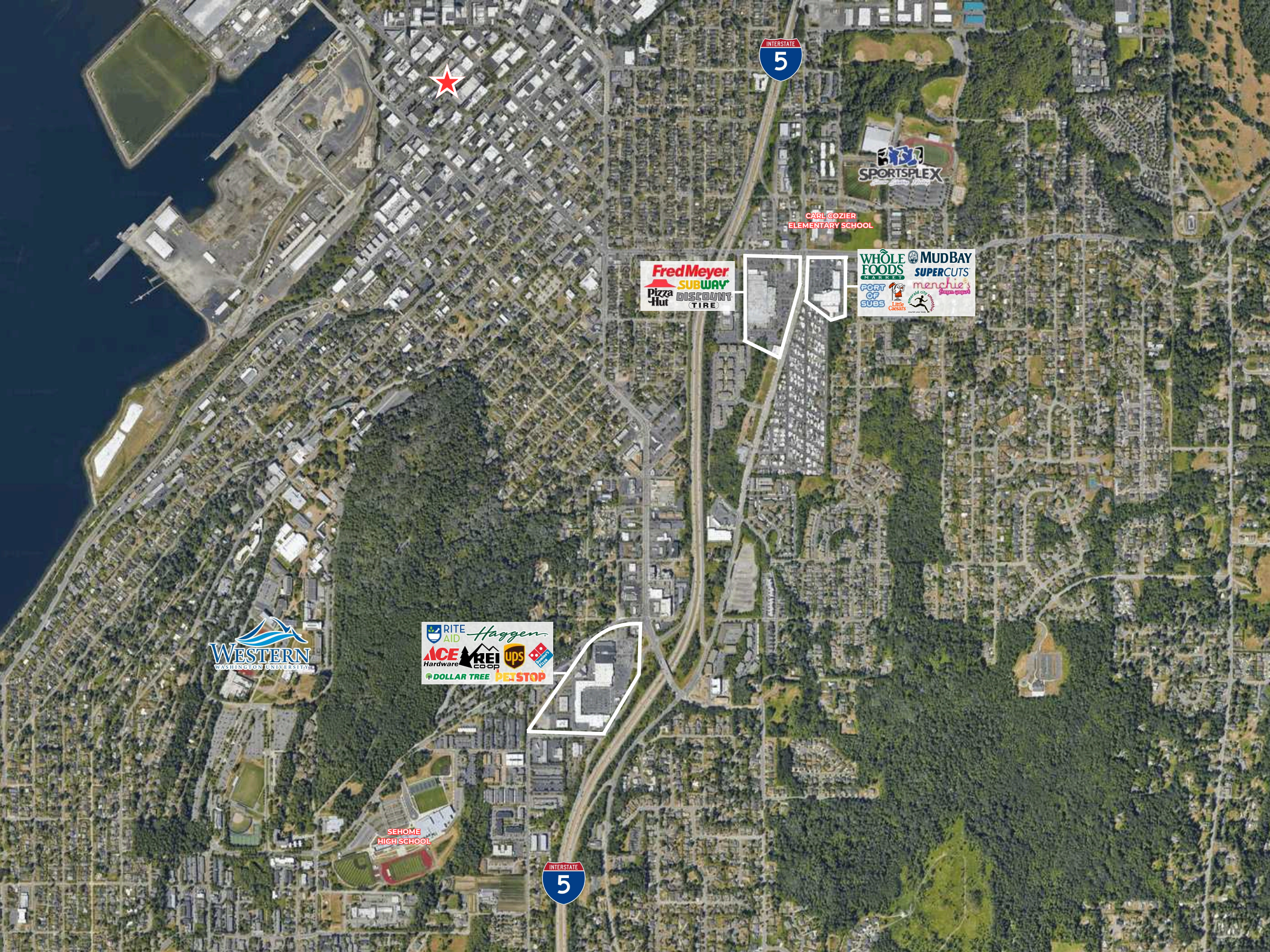
*2024 PROJECTIONS FOR BELLINGHAM, WA. COLLECTED VIA SITESUSA



Prime corner in downtown Bellingham with Windows lining Cornwall and Holly St. This second floor space is a blank canvas for office, retail, or condo units (plan already completed). This was the former office space for Trillium Corp and has been opened up to allow for any use. Space is available now!

- 6,800 SF
- Space is for lease or sale as a commercial condo
- Shell condition





CARL GOZIER
ELEMENTARY SCHOOL



SEHOME
HIGH SCHOOL





TYSON CLARKE

SENIOR VICE PRESIDENT | PARTNER
TYSON@PAADVISORS.COM

360.319.4855

