

507 WESTLAKE

507 Westlake Ave N | Seattle, WA 98109

Full Building
Opportunity
19,440 RSF

NEWMARK

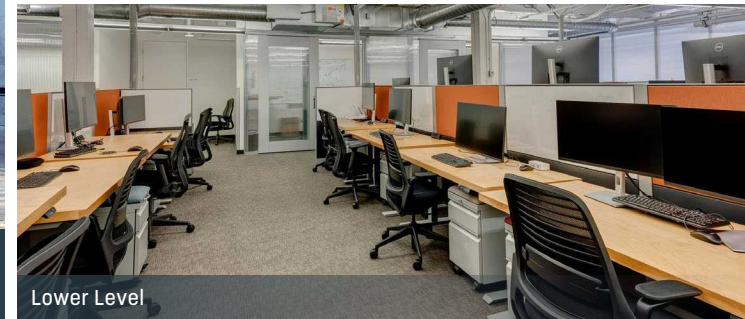




Second Floor



First Floor



Lower Level

AVAILABILITIES

FLOOR	RSF	VIRTUAL TOUR	AVAILABLE
Lower Level	6,480 RSF		Available Now
First Floor	6,480 RSF		Available Now
Second Floor *	6,480 RSF		Available Now
Full Building	19,440 RSF		Available Now

** Can be leased separately*

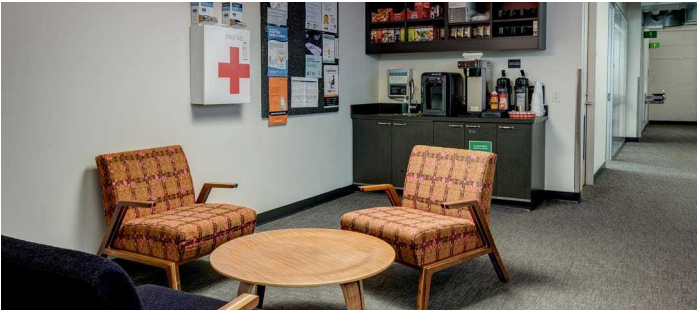
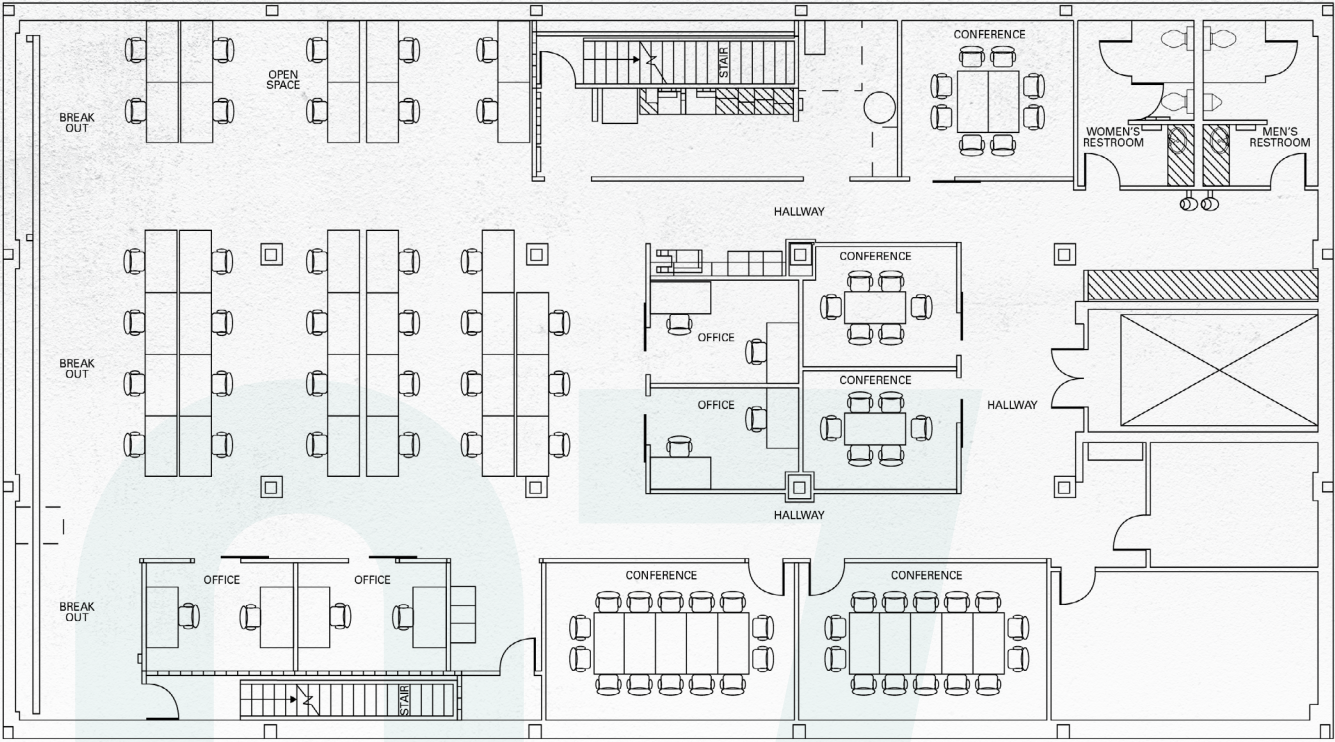


BUILDING HIGHLIGHTS

- Located along South Lake Union Streetcar route
- 50-yard line location in the heart of the Amazon campus with the best South Lake Union amenities
- Easy access to I-5 and Highway 99
- Brick & beam feel with high ceilings and new finishes
- Ceiling heights range from 11' to 16'
- Unique full building opportunity with branding and signage ability

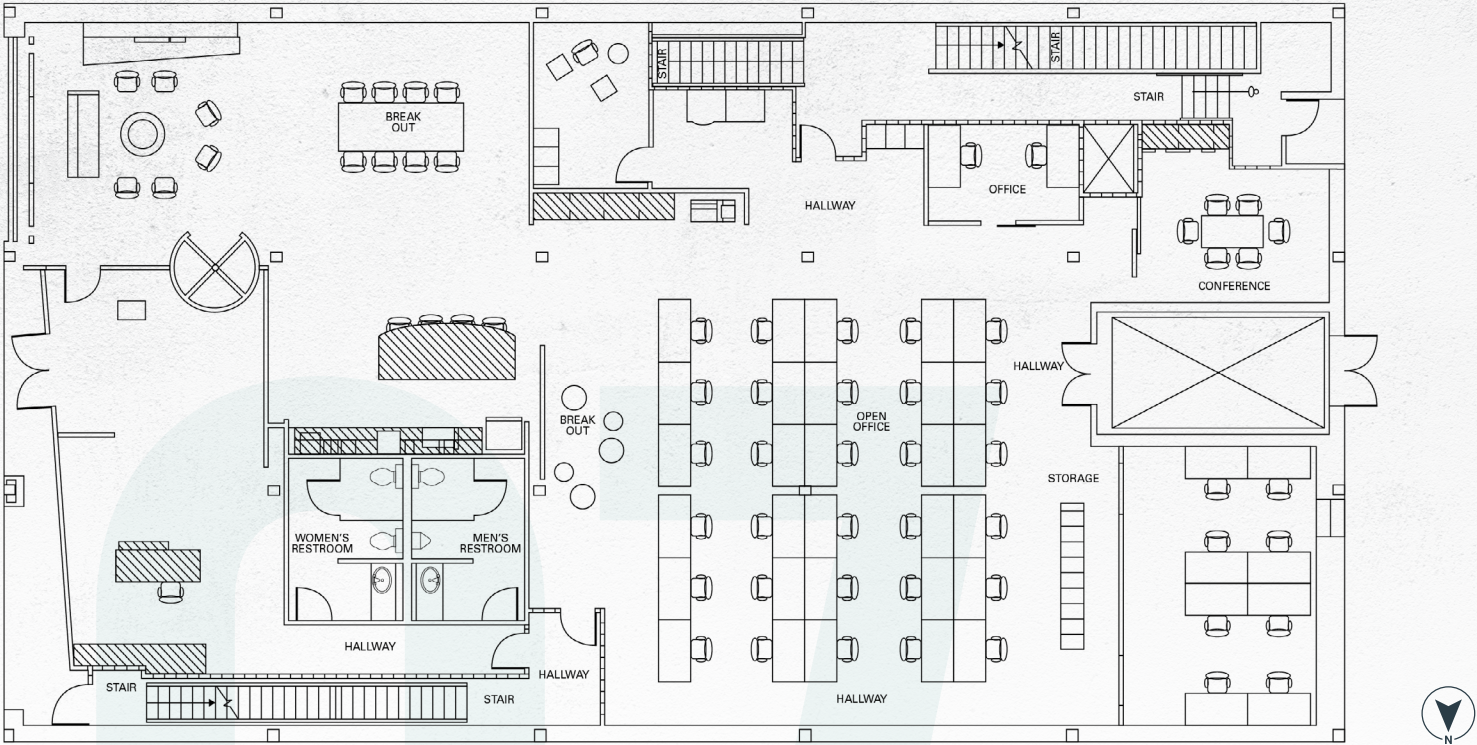
LOWER LEVEL | 6,480 RSF | Available Now | Ceiling Height: 11'

VIRTUAL TOUR



FIRST FLOOR | 6,480 RSF | Available Now | Ceiling Height: 16'

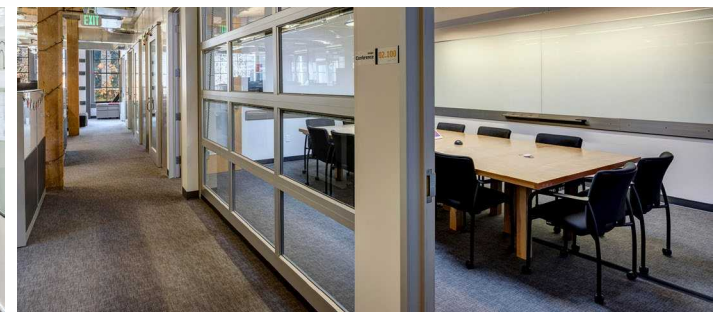
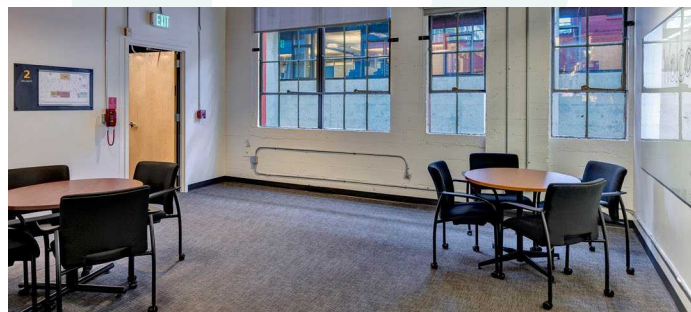
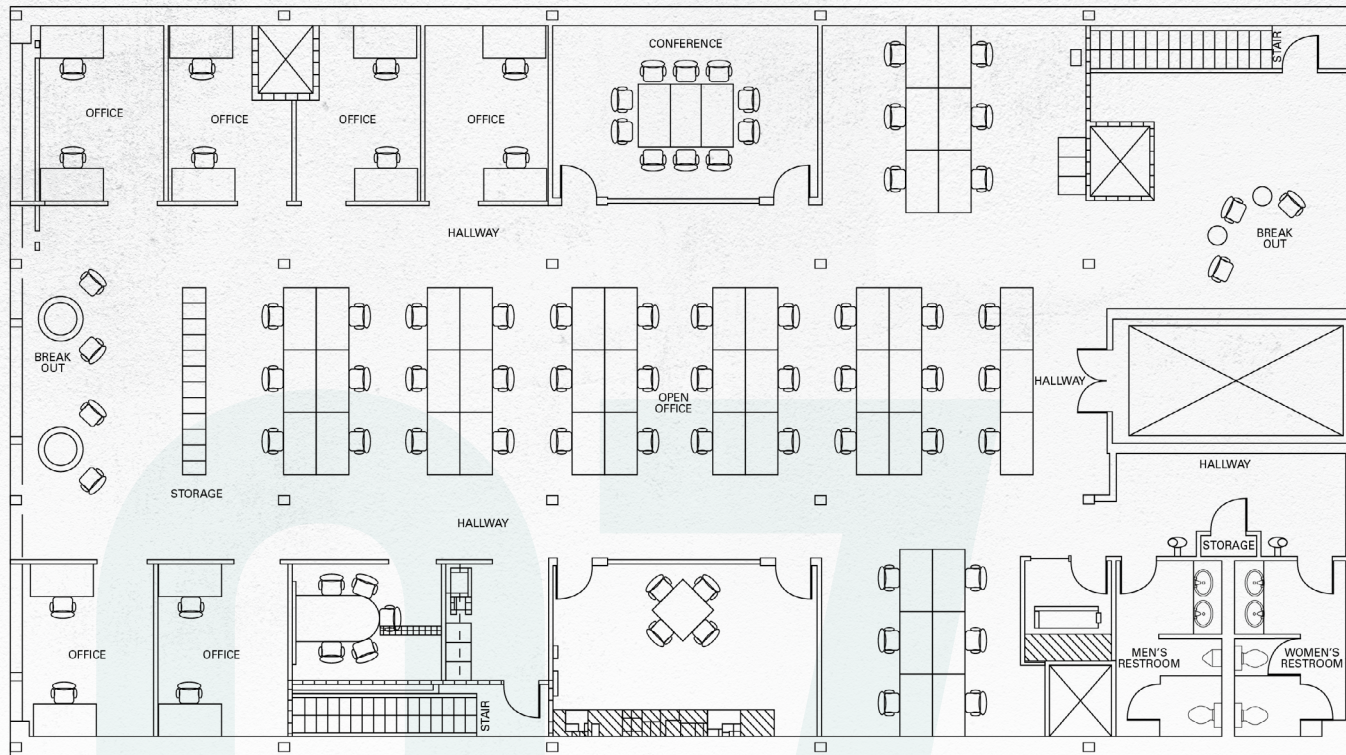
VIRTUAL TOUR



SECOND FLOOR | 6,480 RSF | Available Now | Ceiling Height: 11'7"

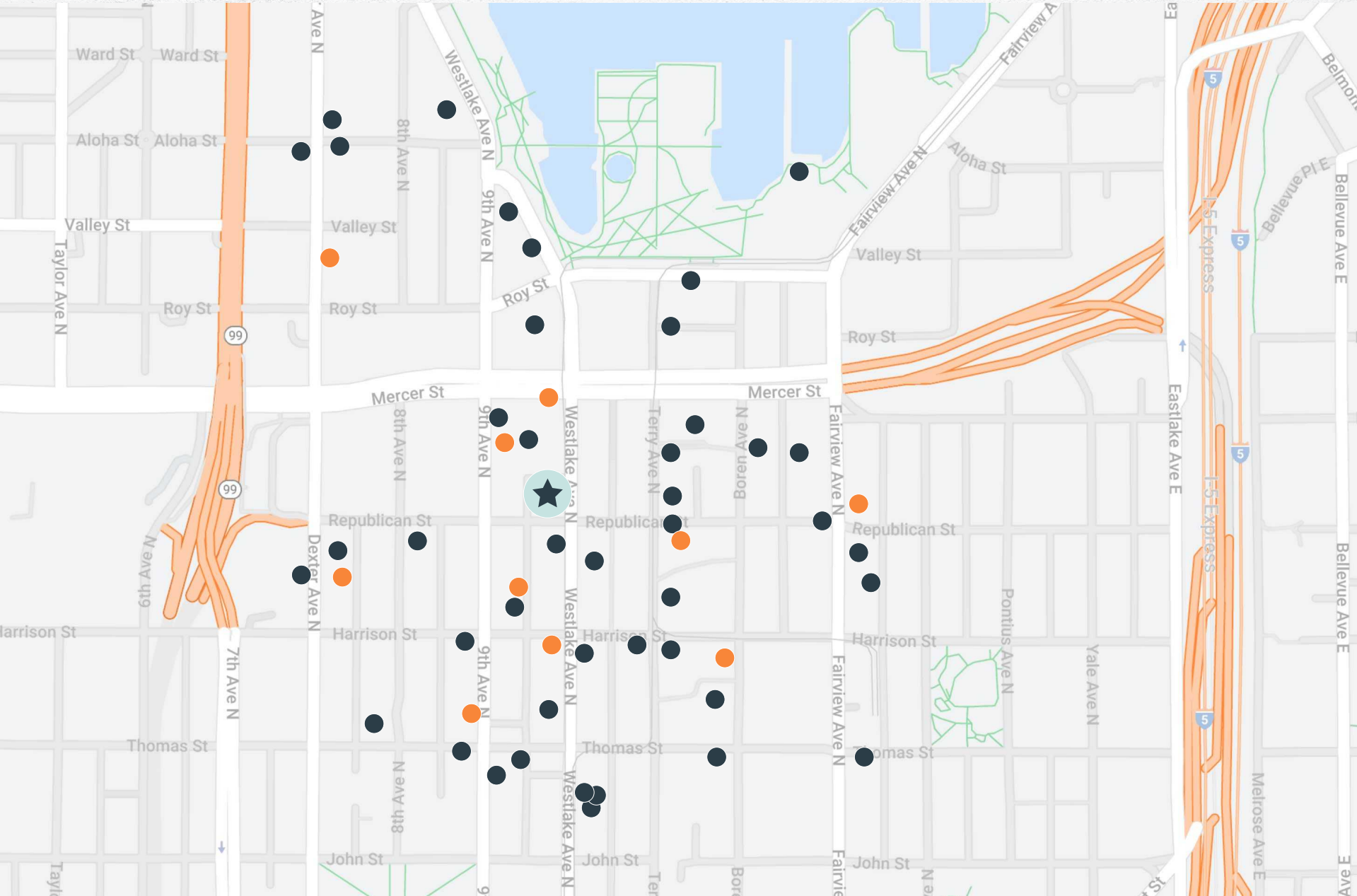
- Can be leased separately from the other floors.

VIRTUAL TOUR



NEARBY AMENITIES

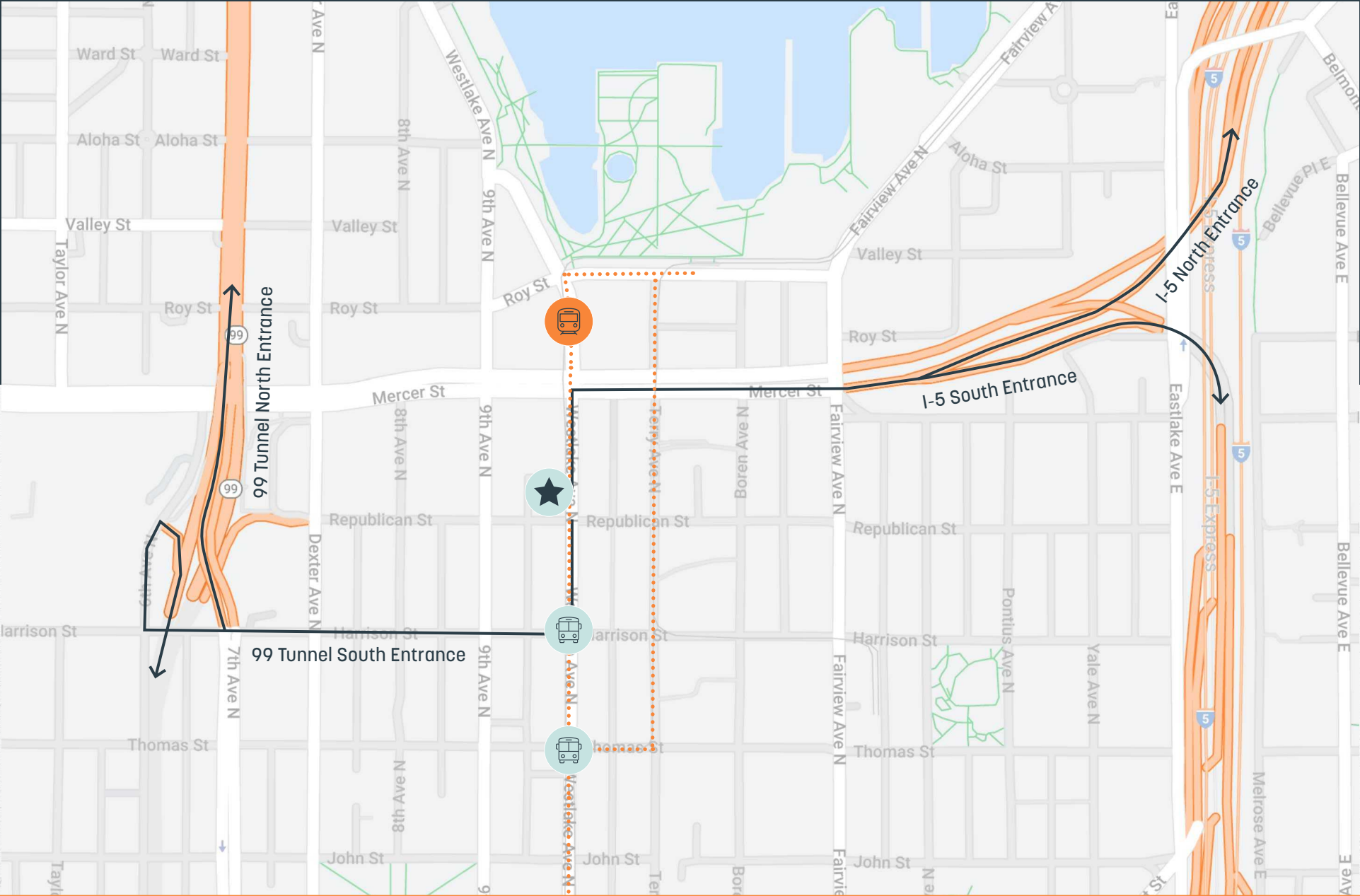
- Food & Drink
- Coffee



TRANSIT MAP



Streetcar: Fairview/Aloha - Westlake/McGraw



507 WESTLAKE 001

CAVAN O'KEEFE
206.395.2903
cavan.okeefe@nmrk.com

JESSE OTTELE
206.452.4529
jesse.ottele@nmrk.com

ANNE MARIE KOEHLER
206.487.5167
annemarie.koehler@nmrk.com

NEWMARK

The information contained herein has been obtained from sources deemed reliable but has not been verified and no guarantee, warranty or representation, either express or implied, is made with respect to such information. Terms of sale or lease and availability are subject to change or withdrawal without notice.