

For Lease  
Flex Space/Office/Warehouse



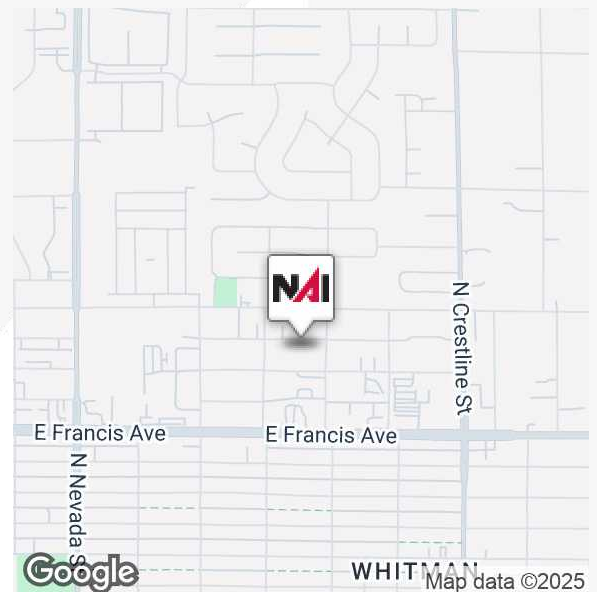
## 1606 E. Holyoke Ave., Bay 3

Spokane, Washington 99217

### Property Description

- Available Space: 1,500 SF  $\pm$  (25'x 60')
- 150 SF  $\pm$  Office
- 12' Roll-Up Door
- 14' Ceiling Height
- 25'x40' Rear Yard
- ADA Bathroom

**Lease Rate: \$1,500.00 per month**  
**\$0.80 PSF monthly plus NNN**  
**NNN's \$0.20 PSF monthly**



For more information

**Jim Orcutt**

O: 509 622 3558

jorcutt@naiblack.com

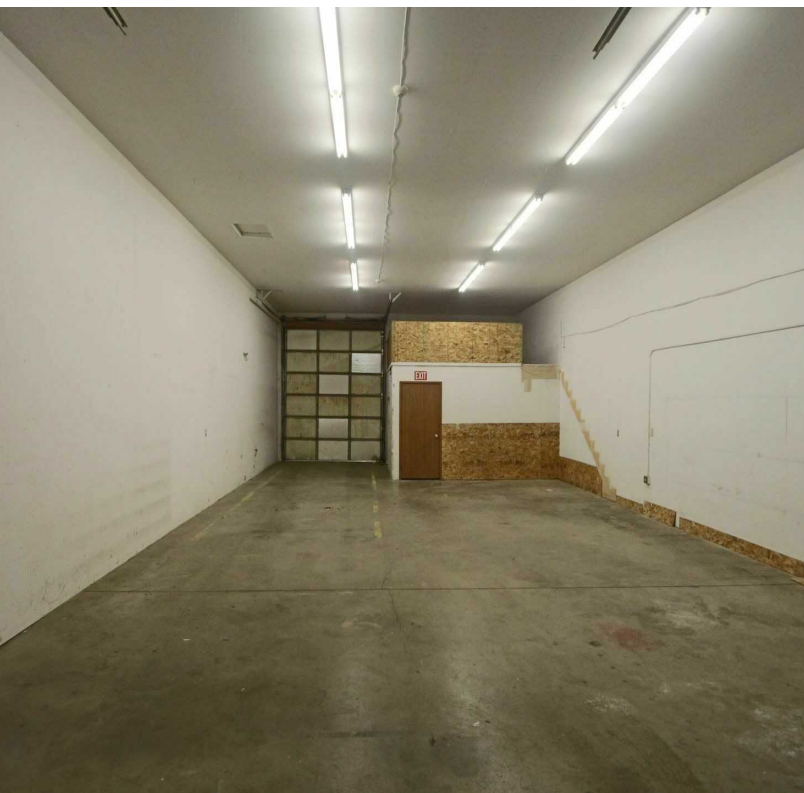
No warranty or representation, expression or implied, is made as to the accuracy of the information contained herein, and the same is submitted subject to errors, omissions, change or price, rental or other conditions, prior to sale, lease, financing, or withdrawal without notice, and of special listing conditions imposed by our principals no warranties or representations are made as to the condition of the property or any hazards contained therein or any to be implied.

801 W. Riverside Avenue, Suite 300  
Spokane, WA 99201  
509 623 1000 tel  
[naiblack.com](http://naiblack.com)



For Lease  
Flex Space/Office/Warehouse

**NAI**Black



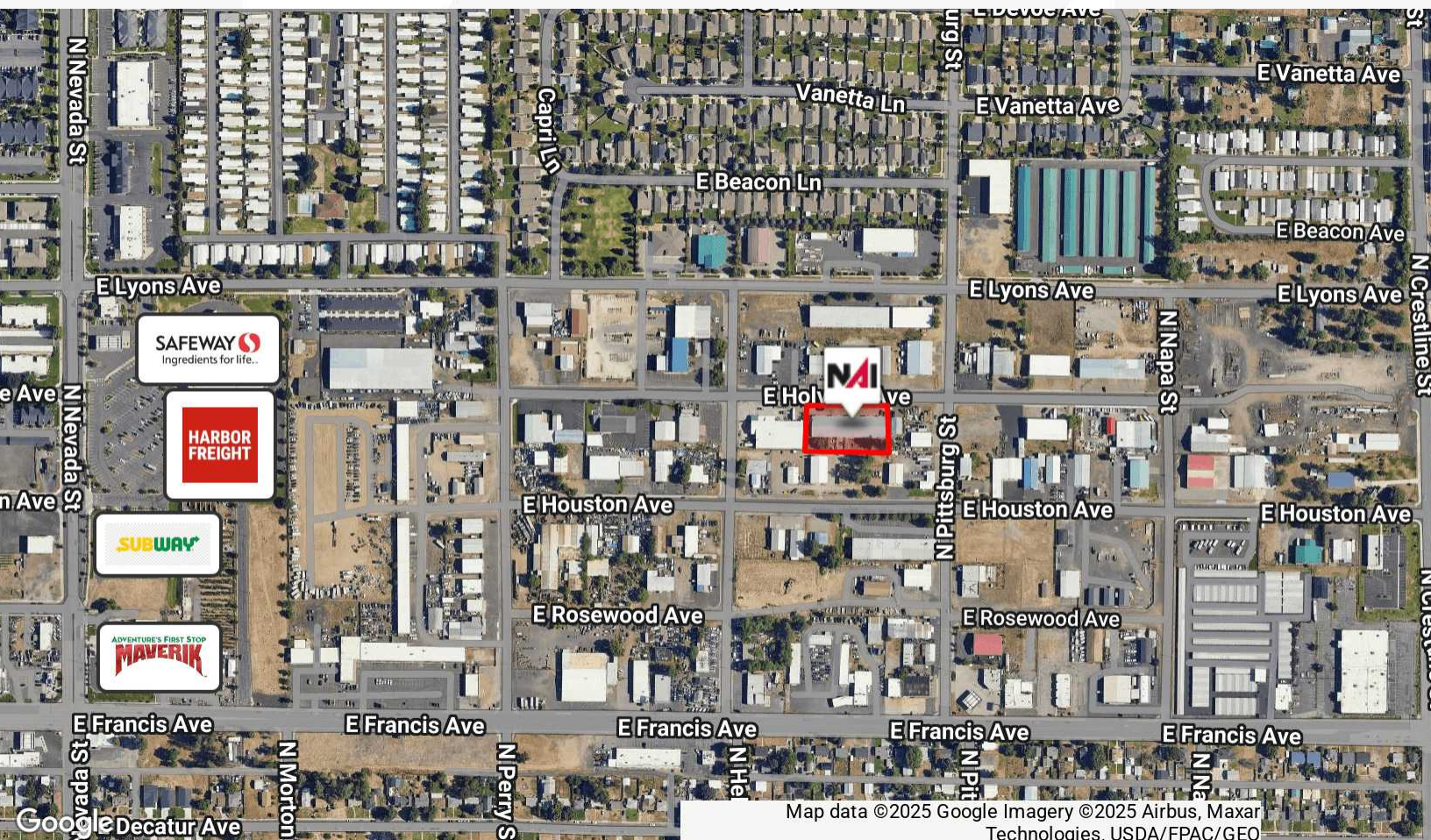
No warranty or representation, expression or implied, is made as to the accuracy of the information contained herein, and the same is submitted subject to errors, omissions, change or price, rental or other conditions, prior to sale, lease, financing, or withdrawal without notice, and of special listing conditions imposed by our principals no warranties or representations are made as to the condition of the property or any hazards contained therein or any to be implied.

801 W. Riverside Avenue, Suite 300  
Spokane, WA 99201  
509 623 1000 tel  
[naiblack.com](http://naiblack.com)



For Lease  
Flex Space/Office/Warehouse

**NAI Black**



No warranty or representation, expression or implied, is made as to the accuracy of the information contained herein, and the same is submitted subject to errors, omissions, change or price, rental or other conditions, prior to sale, lease, financing, or withdrawal without notice, and of special listing conditions imposed by our principals no warranties or representations are made as to the condition of the property or any hazards contained therein or any to be implied.

801 W. Riverside Avenue, Suite 300  
Spokane, WA 99201  
509 623 1000 tel  
[naiblack.com](http://naiblack.com)