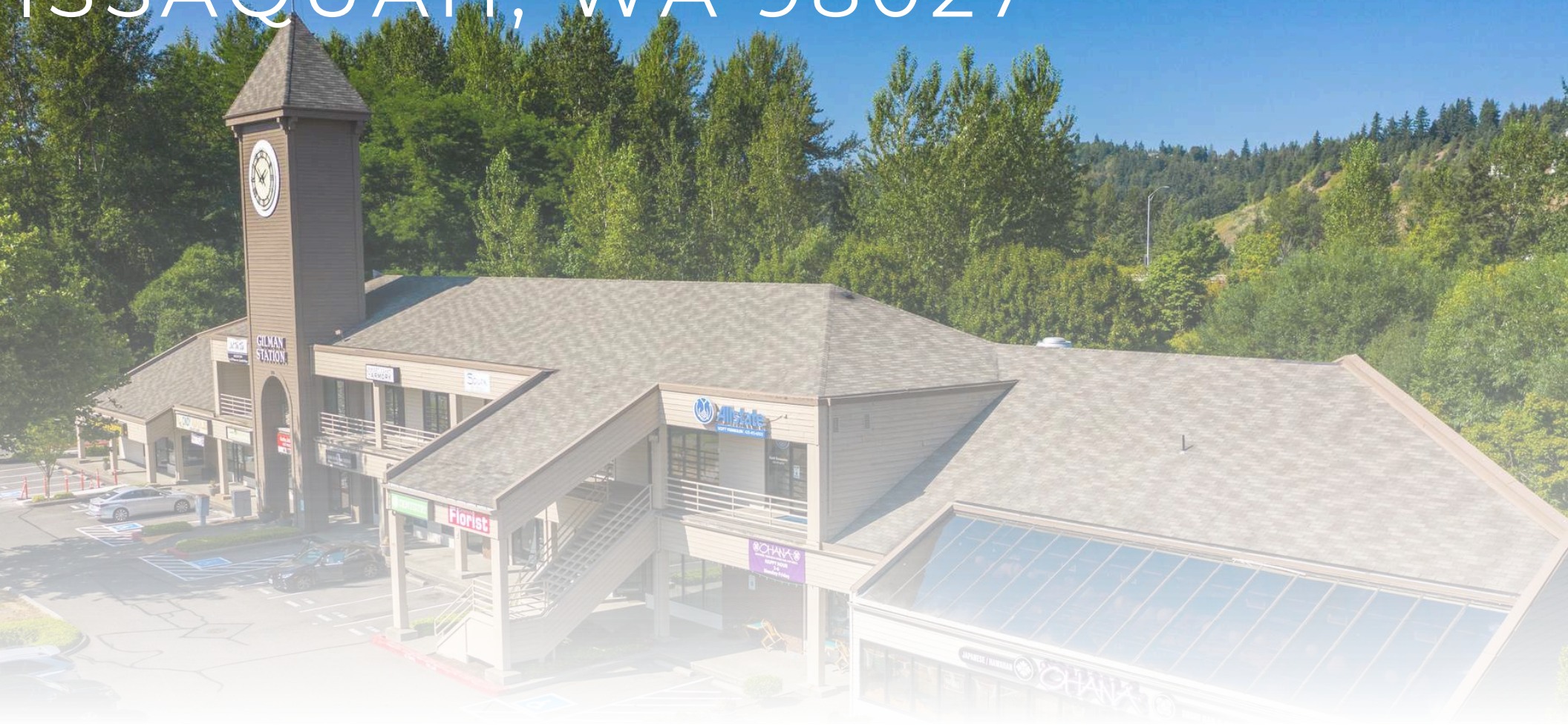


# GILMAN STATION

240 NW GILMAN BLVD | ISSAQUAH, WA 98027



240 NW GILMAN BLVD  
ISSAQUAH, WA 98027



**CALL**

FOR RATES

**680 -  
3,469 SF**

RETAIL

**\$14.63**

NNN PER SQUARE FOOT





**40k**  
TOTAL  
POPULATION

**27k**  
DAYTIME  
POPULATION

**\$238k**  
AVG. HOUSEHOLD  
INCOME

**2.5k**  
BUSINESSES

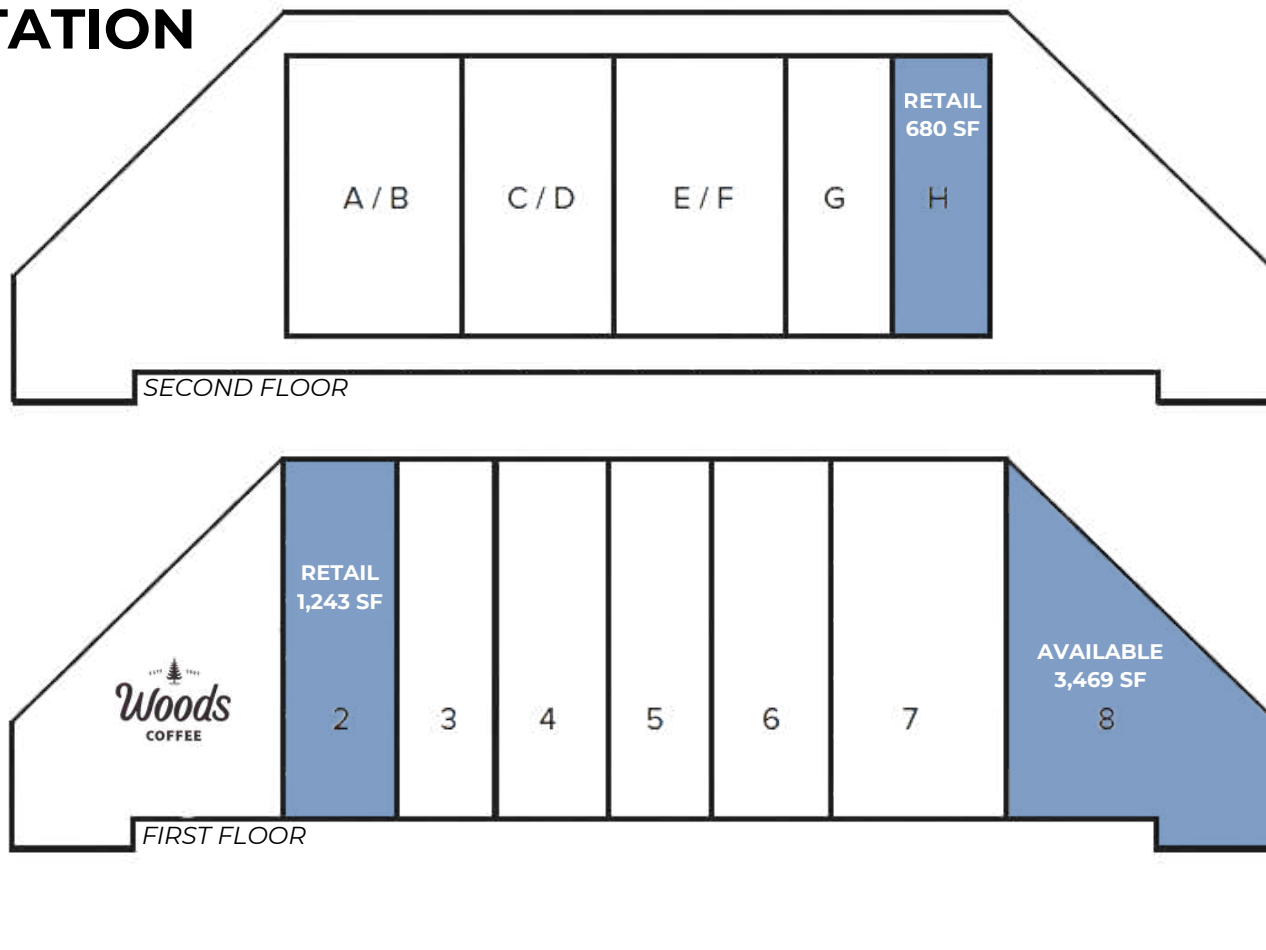
**89%**  
ADULTS WITH  
COLLEGE EDUCATION

**18k**  
EMPLOYEES

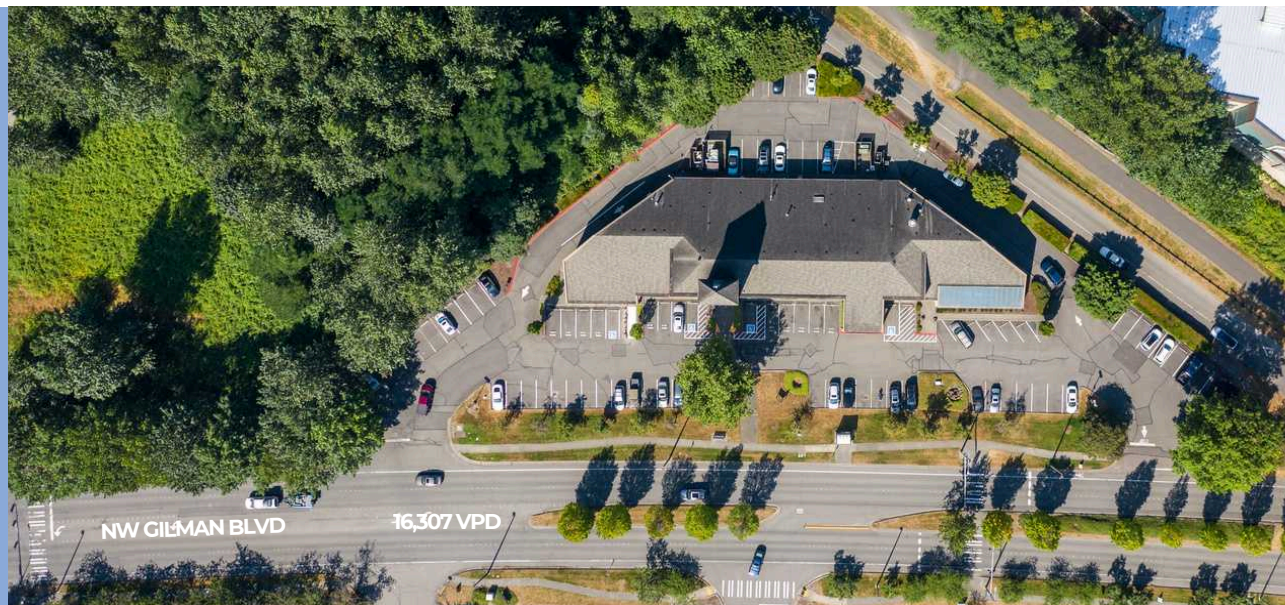
\*2024 PROJECTIONS FOR ISSAQUAH, WA. COLLECTED VIA SITESUSA



# GILMAN STATION SITE PLAN



- Premier Location in the Heart of Issaquah
- Close Proximity to Target, Hobby Lobby, Trader Joe's, and more
- Close Proximity to Costco Headquarters
- Designated retail parking



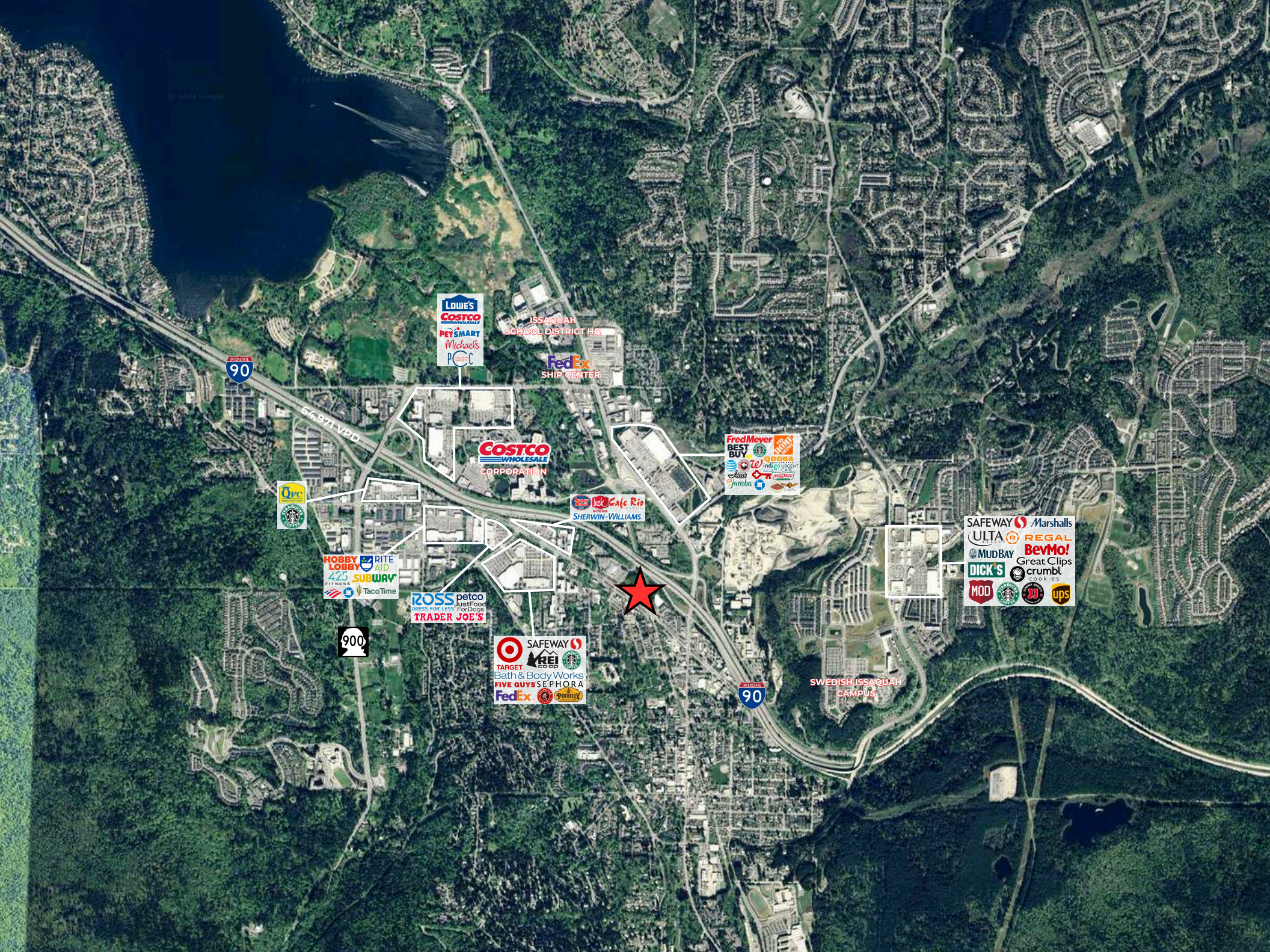


- Updated exterior
- Enhanced signage for center and tenants
- Modernized black railings
- Repaint asphalt
- Update restaurant skylight
- Larger restaurant signage

- New 2-stop elevator provides easy access to second floor
- Enhanced lighting
- Improved pavers and landscaping
- New steel stairway
- Better connection to existing sidewalk

[LINK TO  
FUTURE PLANS](#)





LOWE'S  
Costco  
PETSMART  
Michaels  
P&C

ISSAQUAH  
SCHOOL DISTRICT HQ

FedEx  
SHIP CENTER

Costco  
WHOLESALE  
CORPORATION

Fred Meyer  
BEST BUY  
QDOBA  
Jamba

Starbucks  
Cafe Rio  
SHERWIN-WILLIAMS

OPC  
Starbucks

HOBBY LOBBY  
425  
SUBWAY  
TacoTime

ROSS  
petco  
bress for LESS For Dogs  
TRADER JOE'S

900

Target  
SAFEWAY  
Bath & Body Works  
FIVE GUYS  
SEPHORA  
FedEx

90

SWEDISH ISSAQUAH  
CAMPUS

SAFEWAY  
ULTA  
MUD BAY  
DICK'S  
MOD  
Marshalls  
REGAL  
BevMo!  
Great Clips  
crumbl  
cookies  
ups





**TORI HERMAN**

ASSOCIATE BROKER

TORI@PAADVISORS.COM

425.300.5770



**ADAM GREENBERG**

SENIOR VICE PRESIDENT | PARTNER

ADAM@PAADVISORS.COM

425.503.1339



**RYAN CORNISH**

SENIOR VICE PRESIDENT | PARTNER

RYAN@PAADVISORS.COM

206.375.6142

