



# WONDER BUILDING



**TIMELESS CHARACTER,  
MODERN OPPORTUNITY.**

835 N Post St, Spokane, WA

[WonderSpokaneLeasing.com](http://WonderSpokaneLeasing.com)



Jones Lang LaSalle Brokerage,  
Inc., Real Estate License #: 01856260



# PROPERTY OVERVIEW



Rooftop Deck  
with Views of  
Spokane River



6-Story Parking  
Garage (4.0/1,000  
Parking Ratio)



EV Charging  
Stations



Secure  
Bike Storage



Showers and  
Locker Rooms



16'  
Ceiling Heights



Abundant  
Natural Light



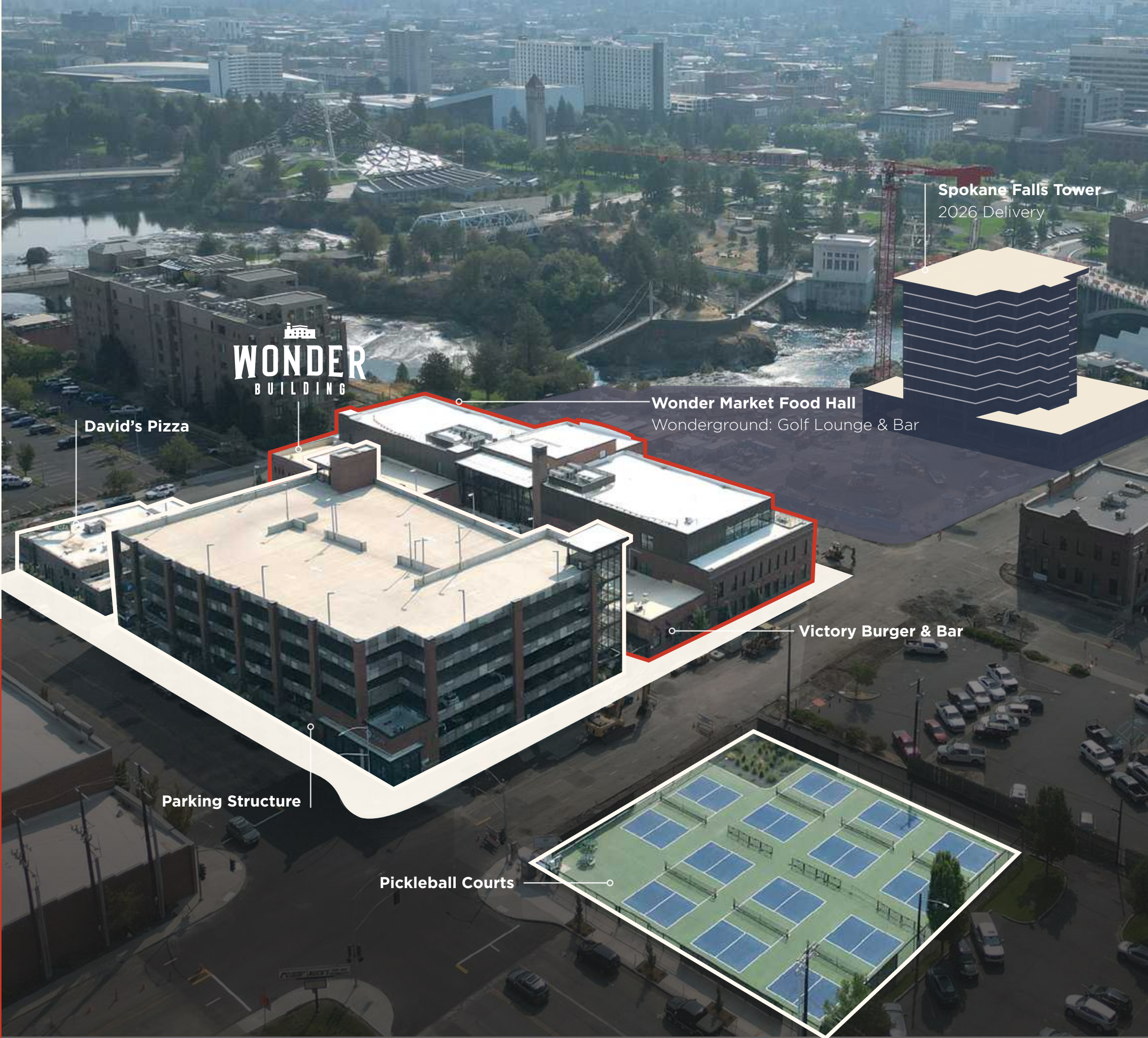
Exterior Signage  
Potential



7 Pickleball  
Courts



On-Site Dining:  
Wonder Market  
Wonderground  
Victory Burger & Bar  
David's Pizza



WONDER  
BUILDING

David's Pizza

Wonder Market Food Hall

Wonderground: Golf Lounge & Bar

Spokane Falls Tower  
2026 Delivery

Victory Burger & Bar

Parking Structure

Pickleball Courts



# ON-SITE AMENITIES





THE  
NEIGHBORHOOD



UNIVERSITY  
DISTRICT

N Division Street

CENTRAL BUSINESS  
DISTRICT

W North River Drive

NORTH  
BANK

RIVERFRONT  
PARK

N Monroe Street

THE PODIUM

ONE SPOKANE  
STADIUM

W Mallon Avenue

SPOKANE  
ARENA

W Boone Avenue



SPOKANE  
COURTHOUSE



WALKABLE

# AMENITIES

RETAIL

- REI
- Wonders Of The World
- The Flour Mill
- My Fresh Basket
- Nike Factory Store
- Auntie's Bookstore
- FinnBoy Records

HOTELS

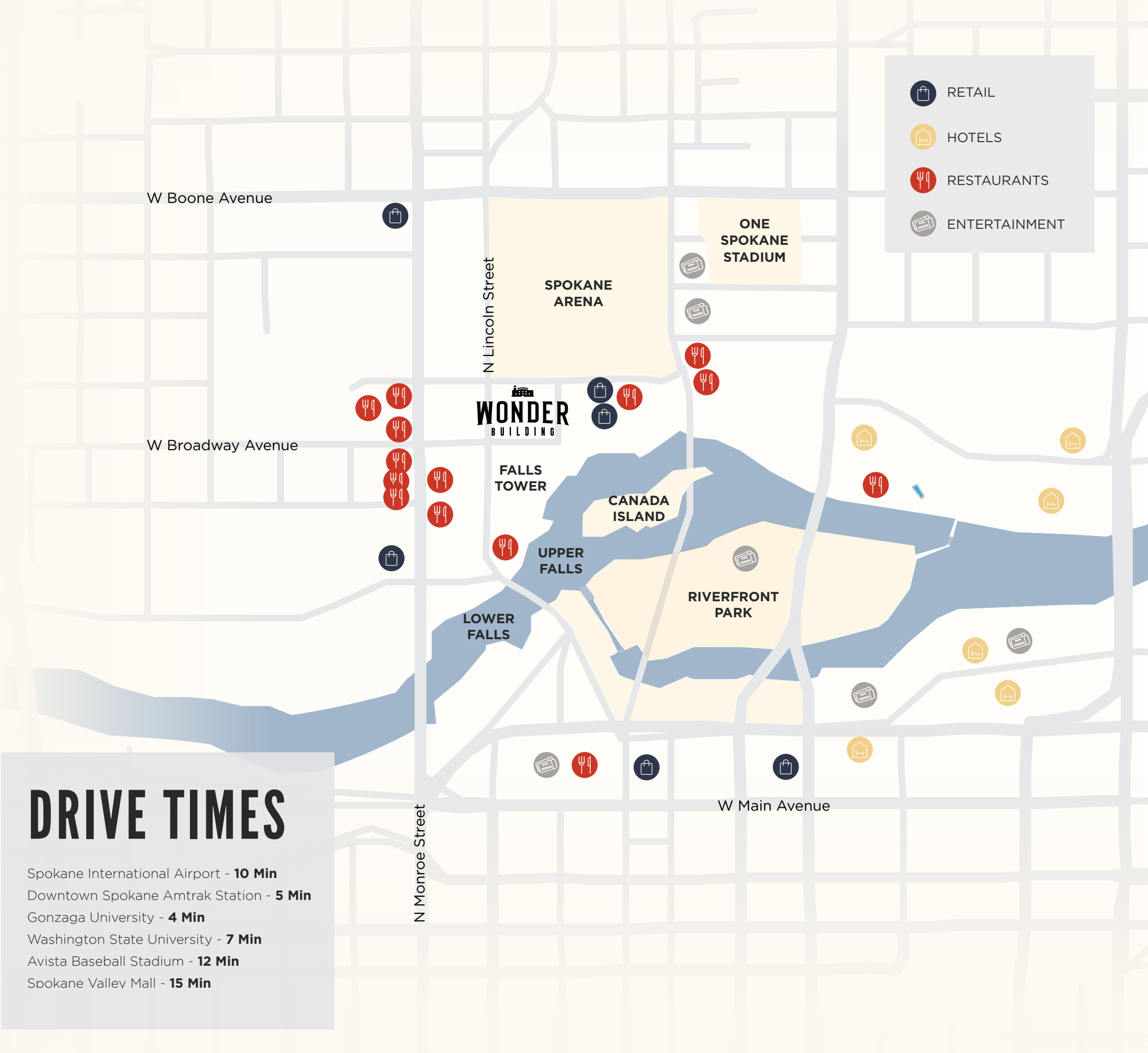
- The Centennial Hotel
- Oxford Suites Spokane
- Holiday Inn Express
- DoubleTree by Hilton Hotel
- The Davenport Grand
- Best Western Plus

RESTAURANTS

- Clinkerdagger
- Shawn O'Donnell's American Grill
- Cedar Coffee
- Anthony's at Spokane Falls
- Bruncheonette
- Cultivated Chameleon
- Birdie's Pie Shop
- Seng's Asian Barbecue
- Chowderhead
- Kasa Restaurant and Taphouse
- Outsider
- Lorèn
- The Centennial Restaurant & Bar

ENTERTAINMENT

- The Podium
- Spokane Civic Theatre
- Gesa Pavilion
- Spokane Convention Center
- AMC River Park Square 20
- First Interstate Center for the Arts



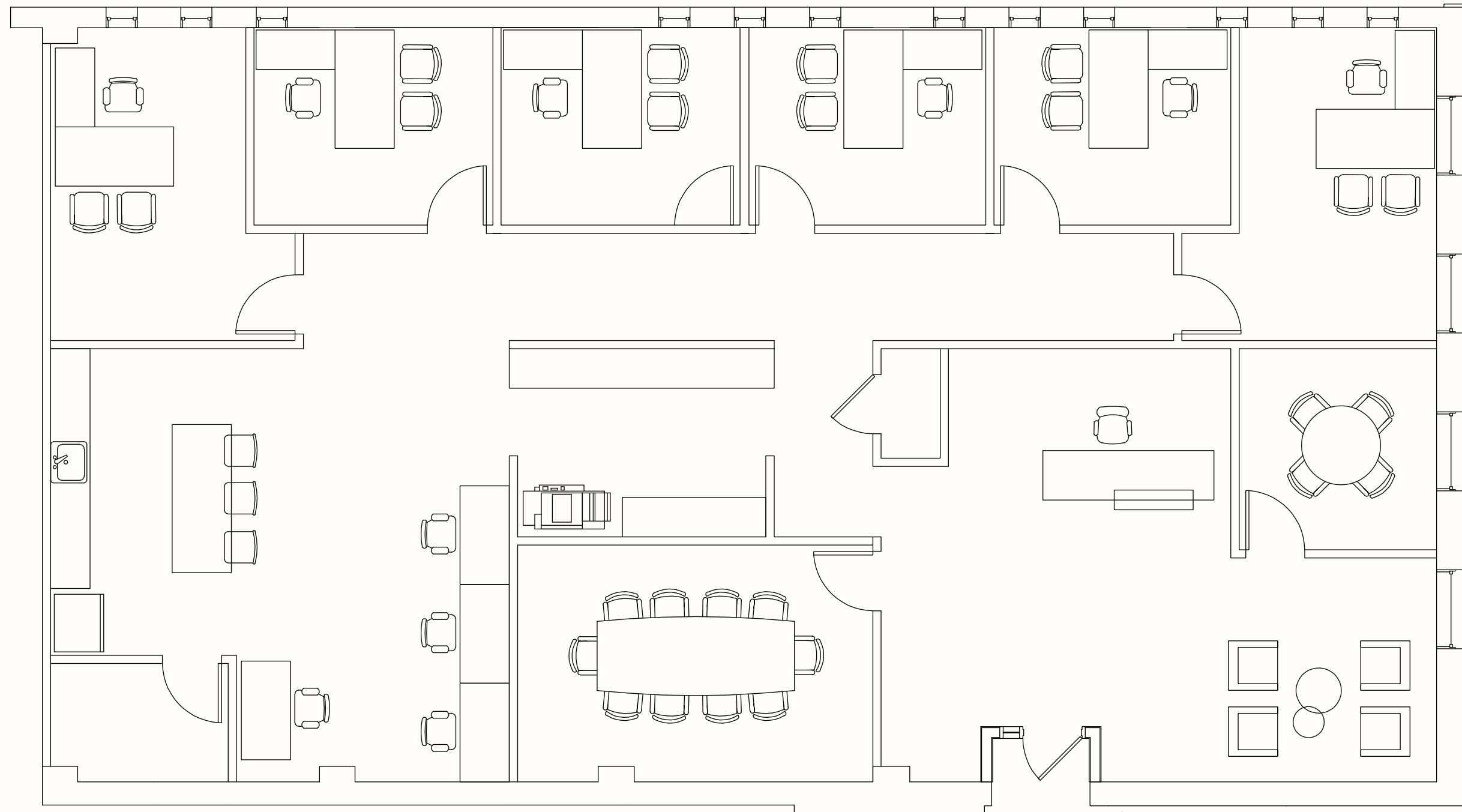
# DRIVE TIMES

- Spokane International Airport - **10 Min**
- Downtown Spokane Amtrak Station - **5 Min**
- Gonzaga University - **4 Min**
- Washington State University - **7 Min**
- Avista Baseball Stadium - **12 Min**
- Spokane Valley Mall - **15 Min**

# SUITE 220

3,448 RSF

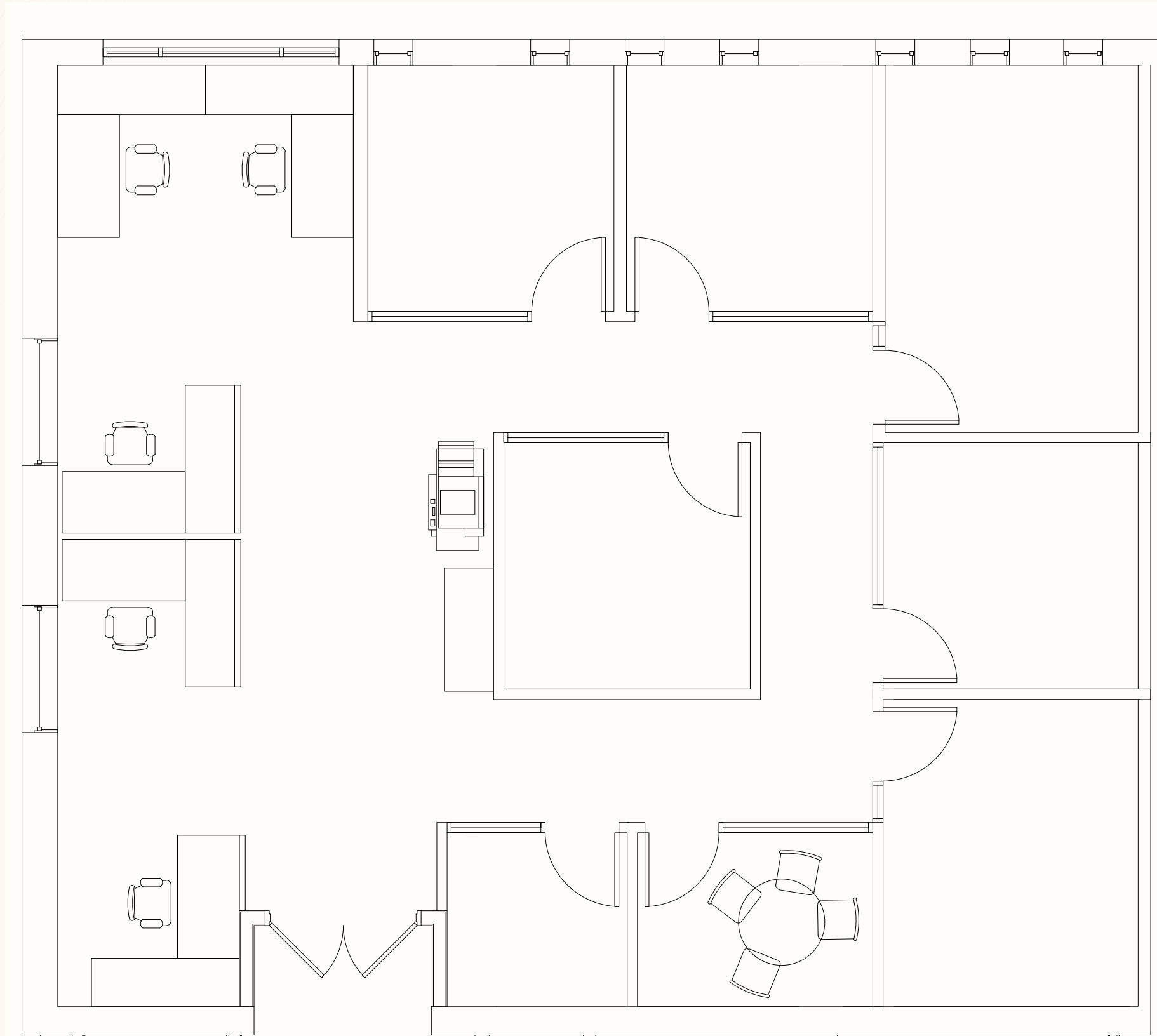
6 private offices, 1 huddle room, 1 conference room, reception, kitchen and break area



# SUITE 250A

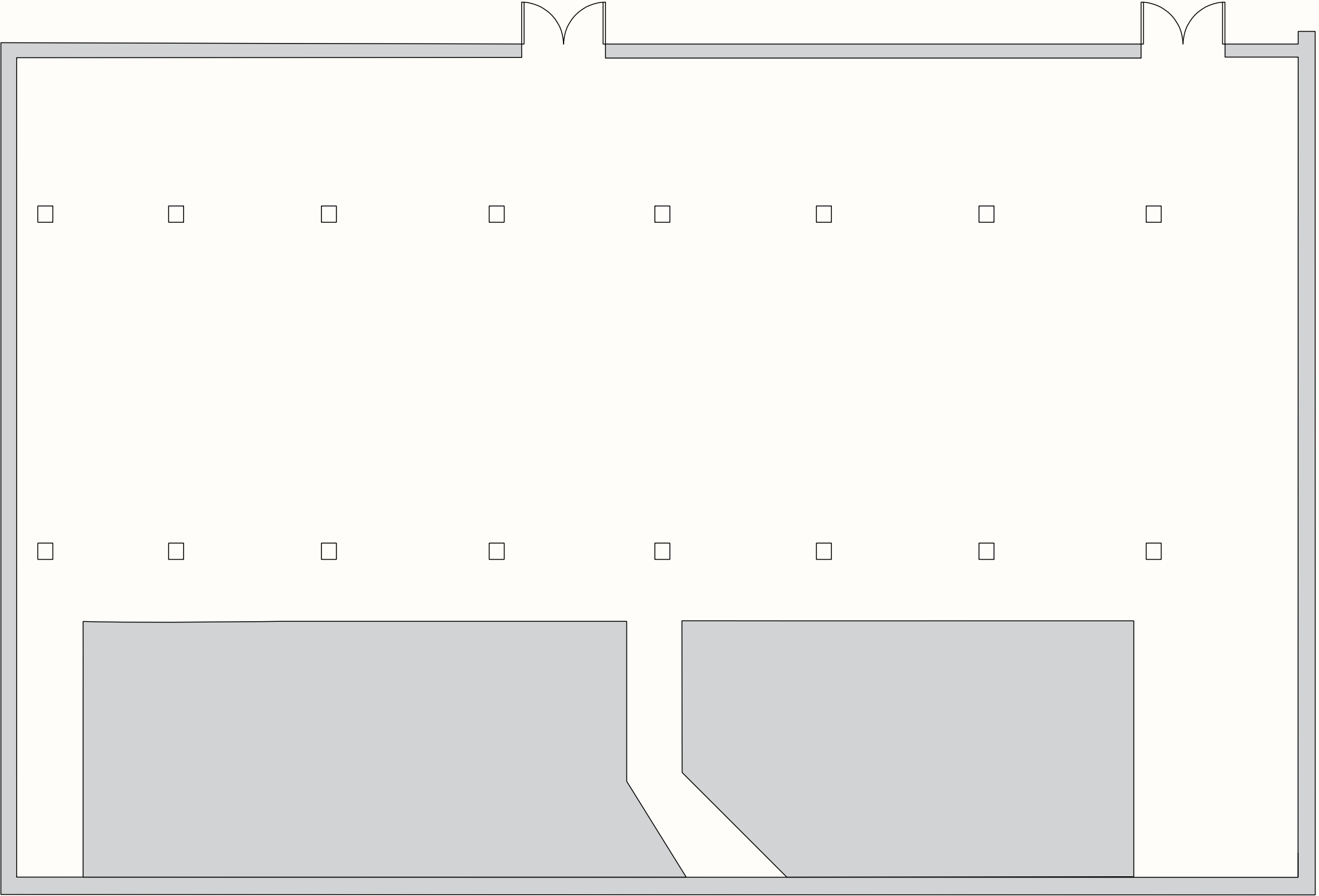
2,120 RSF

5 workstations, 4 private offices, 3 huddle rooms, 1 conference room



# LOWER LEVEL

6,064 RSF







# WONDER BUILDING

WonderSpokaneLeasing.com



**Michael Sharapata**  
+1 509 822 0088  
michael.sharapata@jll.com  
RE License #26565



Jones Lang LaSalle Brokerage,  
Inc., Real Estate License #: 01856260

Although information has been obtained from sources deemed reliable, neither Owner nor JLL makes any guarantees, warranties or representations, express or implied, as to the completeness or accuracy as to the information contained herein. Any projections, opinions, assumptions or estimates used are for example only. There may be differences between projected and actual results, and those differences may be material. The Property may be withdrawn without notice. Neither Owner nor JLL accepts any liability for any loss or damage suffered by any party resulting from reliance on this information. If the recipient of this information has signed a confidentiality agreement regarding this matter, this information is subject to the terms of that agreement.  
©2025 Jones Lang LaSalle IP, Inc. All rights reserved.