



501

EASTLAKE

Seattle, Washington

NEWMARK

Lincoln

CAVAN O'KEEFE
206.395.2903
cavan.okeefe@nmrk.com

DANIEL SEGER
206.487.5163
daniel.seger@nmrk.com

BUILDING HIGHLIGHTS

Modern Class A office building located in the Vibrant South Lake Union neighborhood with excellent views, efficient floorplates and desirable underground parking

- Live, work, play environment with abundant walkable amenities
- Convenient access to I-5, SR 520, I-90 and Hwy 99
- 9' finished ceiling height, 12' slab to slab
- Exterior building signage opportunity with prominent visibility from I-5
- Automated entry (parking and building) and elevator access card system
- Owned and managed Lincoln Property Company



BUILDING FACTS

Building address	501 Eastlake Ave E, Seattle, WA
Year built	2002
Building size	103,494 RSF
Floors	5
Number of elevators	3
Parking ratio	1.7 per 1,000 RSF
Power	3,000 amps of 480V, 3 phase power serving major building systems



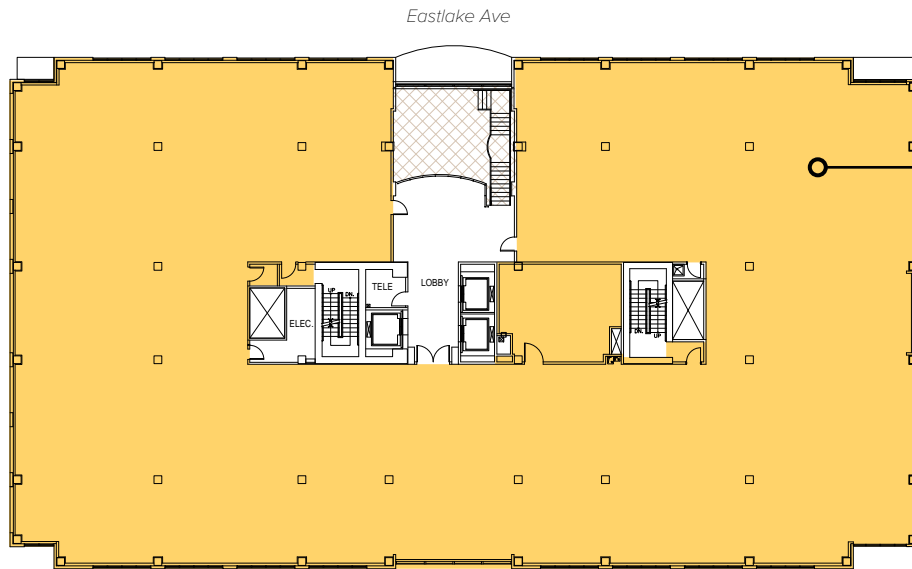
FLOORPLAN

FLOOR 1 | SUITE 101

5,065 SF
Available Now



FLOORPLANS

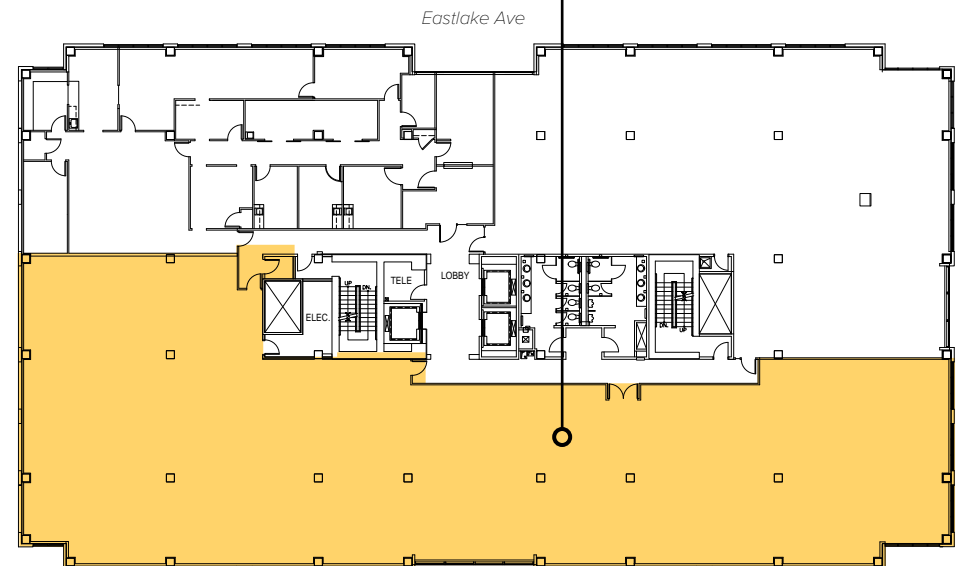


SUITE 200

18,187 SF

SUITE 325

9,058 SF



SUITE 200 + 325

30,514 SF

(Divisible to 9,058 SF)

Available Now

501

EASTLAKE

Seattle, Washington



NEWMARK

Lincoln

CAVAN O'KEEFE

206.395.2903

cavan.okeefe@nmrk.com

DANIEL SEGER

206.487.5163

daniel.seger@nmrk.com

The distributor of this communication is performing acts for which a real estate license is required. The information contained herein has been obtained from sources deemed reliable but has not been verified and no guarantee, warranty or representation, either express or implied, is made with respect to such information. Terms of sale or lease and availability are subject to change or withdrawal without notice. MP-841