

CHOPHOUSE ROW

1424 11TH AVENUE, SEATTLE WA

PLUG & PLAY, CREATIVE, FLEXIBLE

CHOPHOUSE
ROW
1424

CHOPHOUSE ROW

NEWMARK

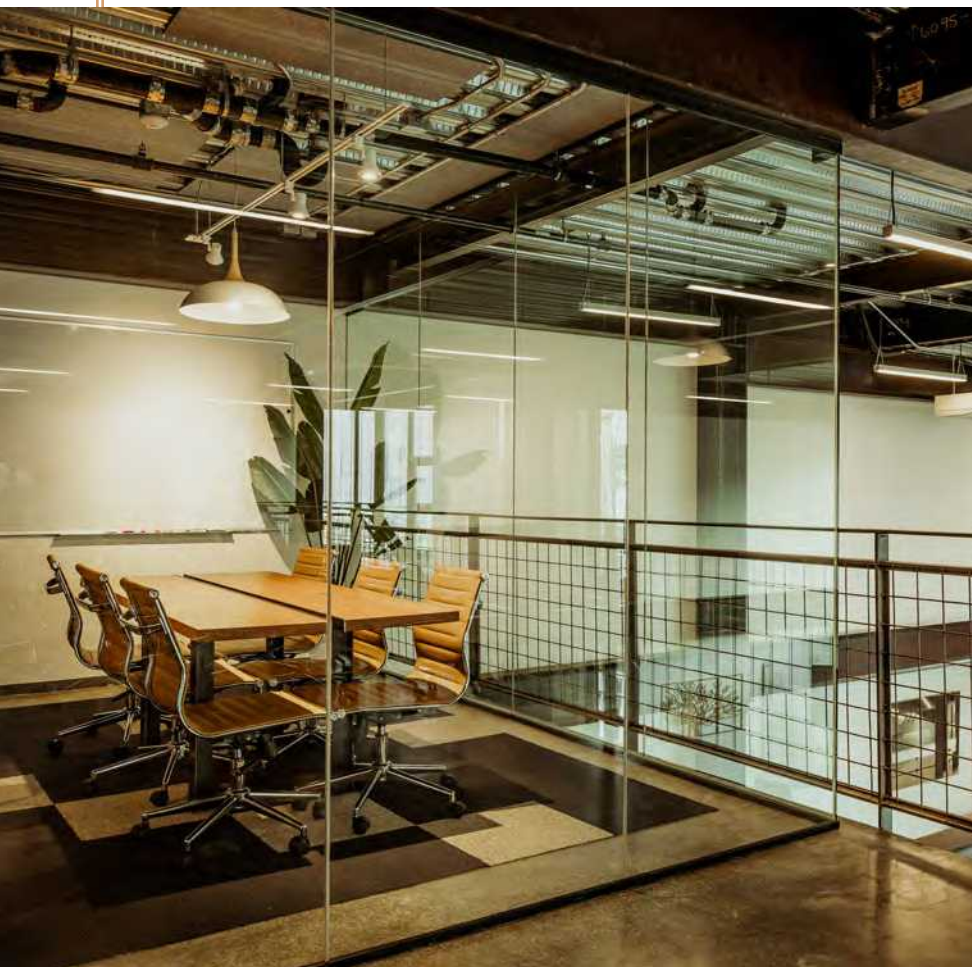
CAVAN O'KEEFE / 206.604.7921 / cavan.okeefe@nmrk.com
CHARLIE FARRA / 206.999.2928 / charlie.farra@nmrk.com
TRACY TURNURE / 425.372.9923 / tracy.turnure@nmrk.com

BUILDING HIGHLIGHTS

Chophouse Row was built in 2015, and has received multiple Design and Development awards including NAIOP's Best Mixed-Use Development Project of the Year for the Pacific Northwest in 2015, and finalist for the Urban Land Institute's Global Award for Excellence in 2016.

Food and beverage establishments in the project include XOM, Light Sleeper, Anbai, Sweet Alchemy, MeeTea, Good Weather and Osteria la Spiga.

Project offers operable windows, a direct fresh air system, dedicated AC and radiant heat to every suite - no shared air systems between suites.



BIKE STORAGE



SHOWER ROOMS



COWORKING FACILITY



BARBERSHOP



SKINCARE SALON



DOGGIE DAYCARE



CROSSFIT GYM

CHOPHOUSE ROW



Unique low-rise boutique building with operable windows and stairway to every floor.

Floor to ceiling high-performance glazing; operable windows; radiant heat; dedicated AC

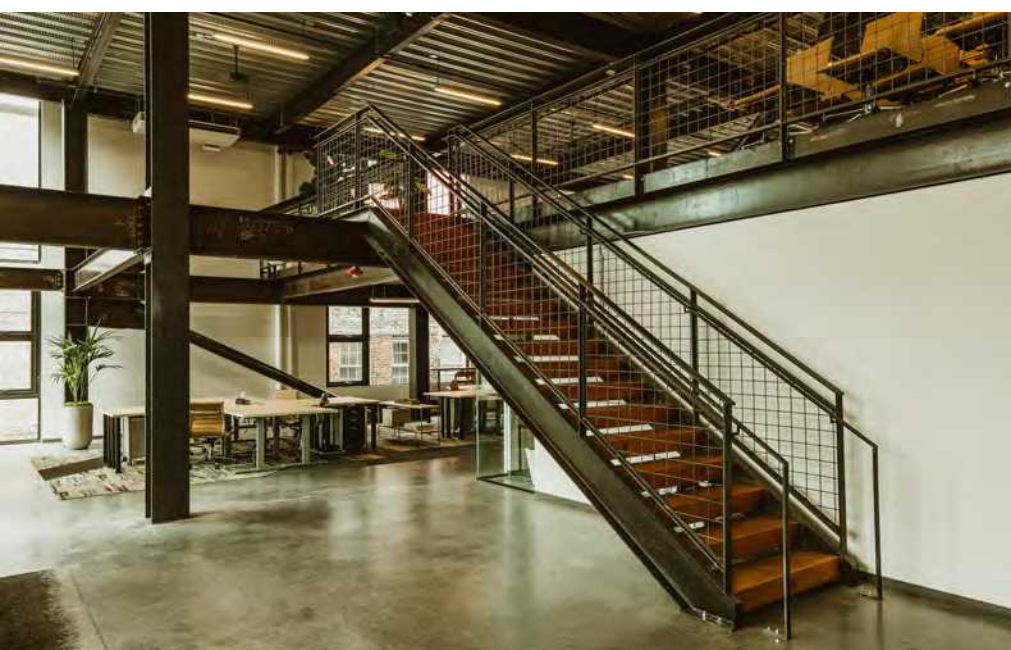


A choice of high-speed internet providers.

Exposed concrete floors and exposed steel structure.

Flexible, open floor plans completely built out for tech/creative users.

Office floors and spaces individually secured via programmable fob system.



Office tenants receive discounted membership to The Cloud Room coworking facilities, which include meeting rooms, workstations, bar/ lounge/event space, catering and podcast recording facilities.



SUITE 200 / 3,722 SF

Available 1/1/2026

- Private west-facing deck with barbecue
- Raised entertaining kitchen with bar
- Large glass conference room and smaller storage/server room
- Floor to ceiling windows
- Radiant heat; operable windows; air conditioning (in the works)
- Furnished at tenant's option

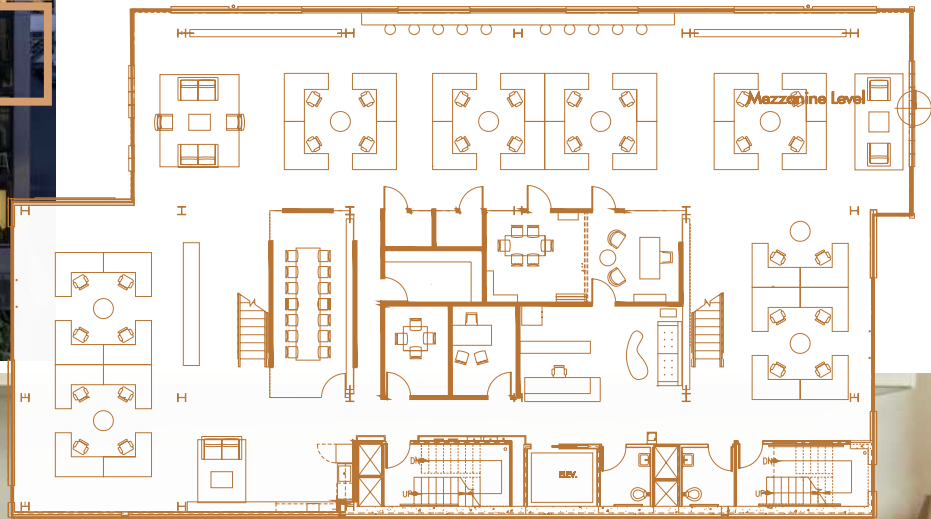


TOTAL ±10,264 SF OF CREATIVE WORKSPACE



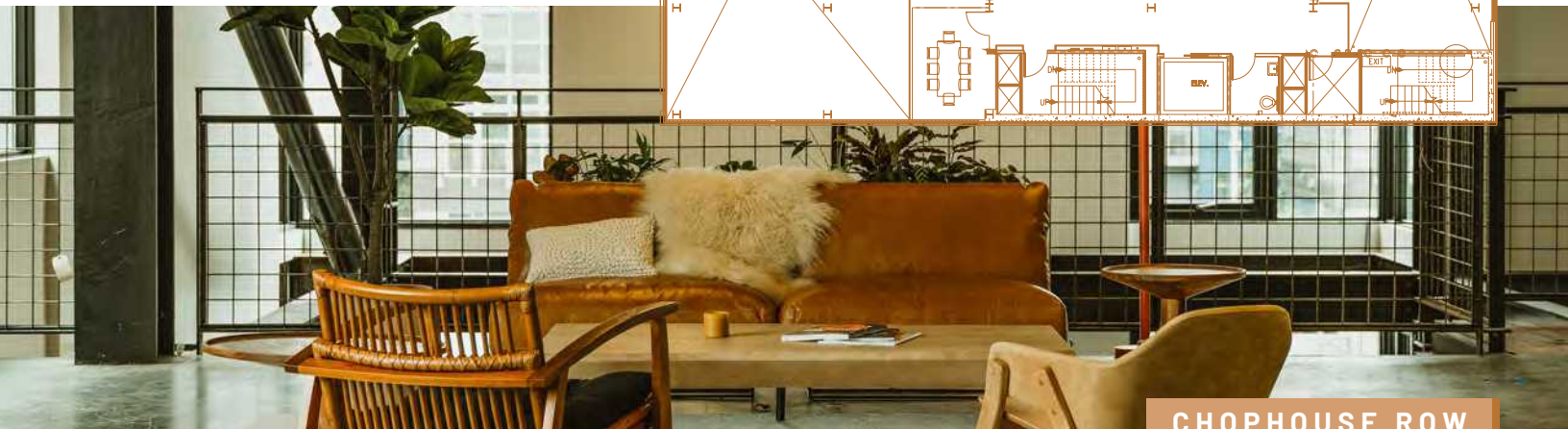
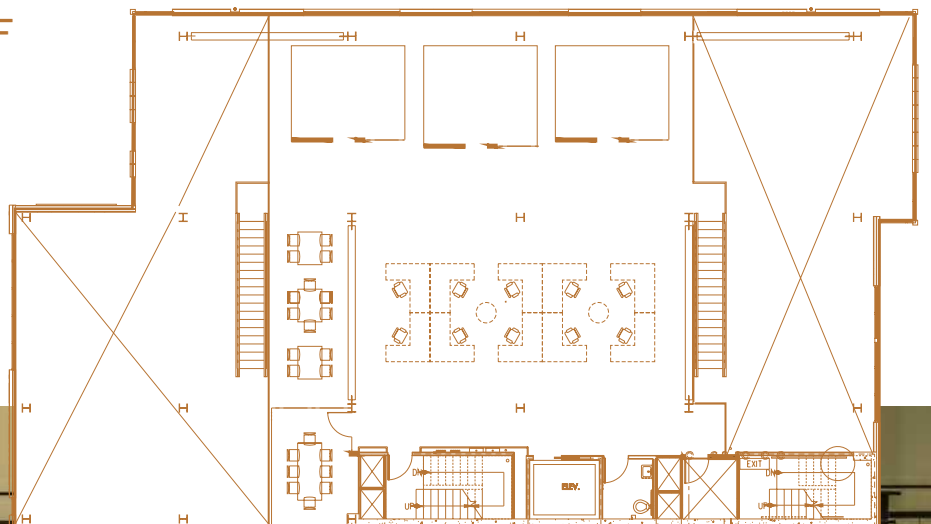
SUITE 300 / ±6,782 SF

- / 1 Kitchen
- / 4 Conference Rooms
- / 4 Private Offices



MEZZANINE / ±3,482 SF

21st century creative office space in the heart of Seattle's historic Pike-Pine neighborhood. Polished concrete floors, steel beams and high ceiling. Open space with 3,482 SF mezzanine, kitchen, four offices/conference rooms, and its own dedicated AC system. Furniture can be made available.



CHOPHOUSE ROW



COWORKING SERVICES

The Cloud Room coworking space is located on the top floor of the project. This space inspires collaboration and creativity, and can be offered to office tenants as a meeting place or alternate workspace to their office suite.

Tenants may also negotiate a package of wraparound coworking services for their own suite in order to make their move-in and daily operations completely turnkey. These include high-speed internet, printers, janitorial, furnishings, plants, artwork, and coworking staff support.





Chophouse Row is located in the heart of the Pike | Pine corridor in Seattle's Capitol Hill neighborhood surrounded by an abundance of walkable amenities & transportation options.

The Pike | Pine corridor is one of Seattle's designated "urban villages" and its most vibrant pedestrian neighborhood, with a combination of historic buildings and new developments full of local restaurants, retailers, galleries and cafes.

XOM
Ante Mista

light sleeper

cake
skincare

Celine Waldmann



THE CLOUD ROOM
COWORKING + LOUNGE



BUTTER HOME

yvev



CLOUD STUDIOS



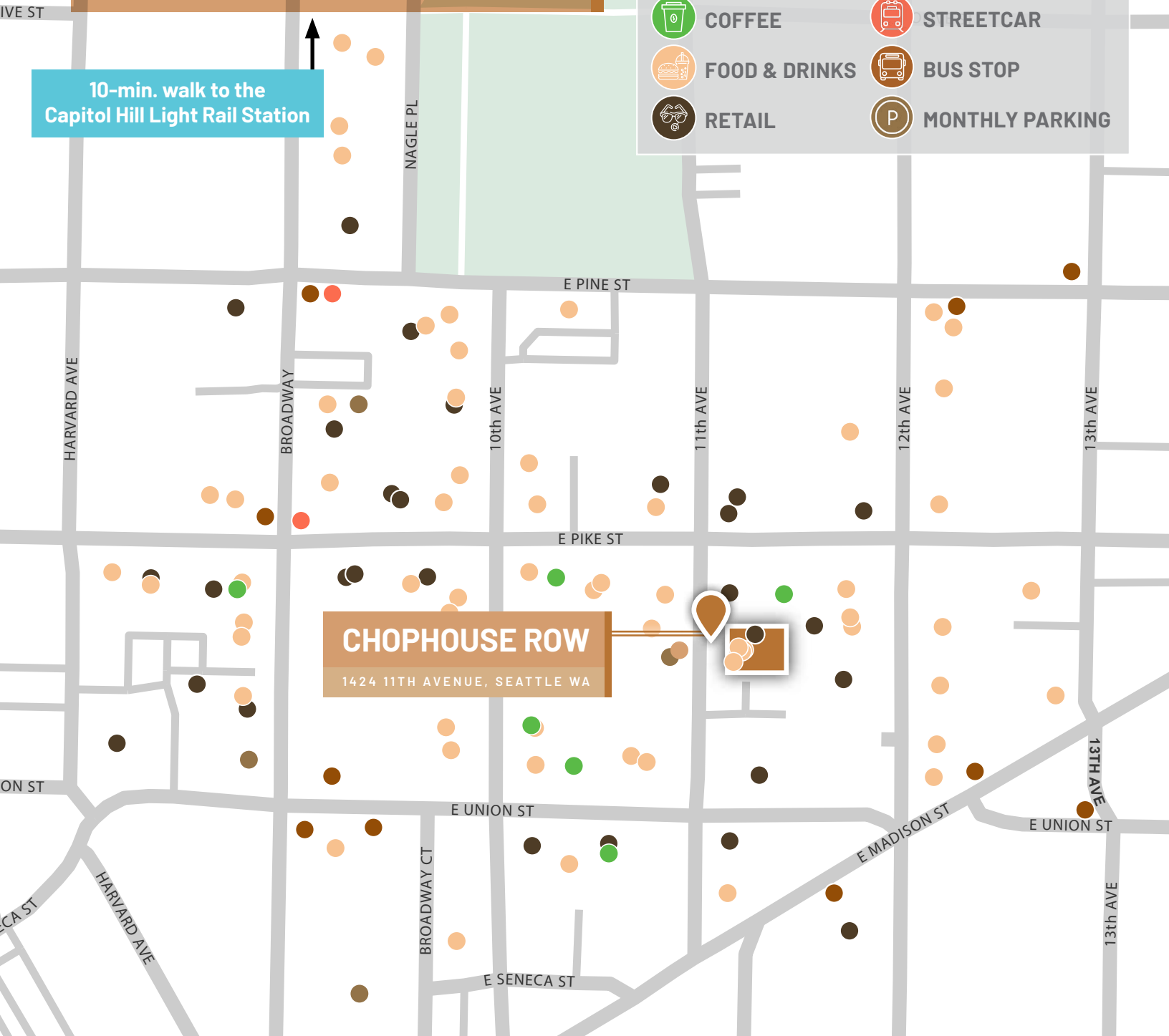
POP!ROX
DANCE STUDIO

Good Weather

LOCATION



AMENITIES MAP



CHOPHOUSE ROW

1424 11TH AVENUE, SEATTLE WA

PLUG & PLAY, CREATIVE, FLEXIBLE

CAVAN O'KEEFE / 206.604.7921 / cavan.okeefe@nmrk.com

CHARLIE FARRA / 206.999.2928 / charlie.farra@nmrk.com

TRACY TURNURE / 425.372.9923 / tracy.turnure@nmrk.com

NEWMARK

The distributor of this communication is performing acts for which a real estate license is required. The information contained herein has been obtained from sources deemed reliable but has not been verified and no guarantee, warranty or representation, either express or implied, is made with respect to such information. Terms of sale or lease and availability are subject to change or withdrawal without notice.

9253954971 • 05/25