

— FAIRVIEW — MARKET HALL

A PEMBROKE PROPERTY



Retail Leasing

FOR MORE DETAILS
PLEASE CONTACT:

Laura Miller
206.351.3573
laura@gibaltarusa.com

Lex Petras
206.618.8462
lexp@gibaltarusa.com

South Lake Union's Neighborhood Marketplace.



Welcome to Fairview Market Hall, a hub of community and commerce in the heart of SLU.

Located on the ground floor of 400 Fairview Avenue, Fairview Market Hall is a chic, industrial indoor/outdoor marketplace featuring an eclectic mix of specialty shops, buzzy eateries, and inviting gathering spaces.

Additionally, Fairview Market Hall is connected to an activated outdoor plaza, dedicated underground parking, 12 stories of office space, and a unique rooftop bar and lounge with sweeping views of the city and Lake Union.



13,360 SF TOTAL RETAIL SPACE
306,750 SF TOTAL OFFICE SPACE

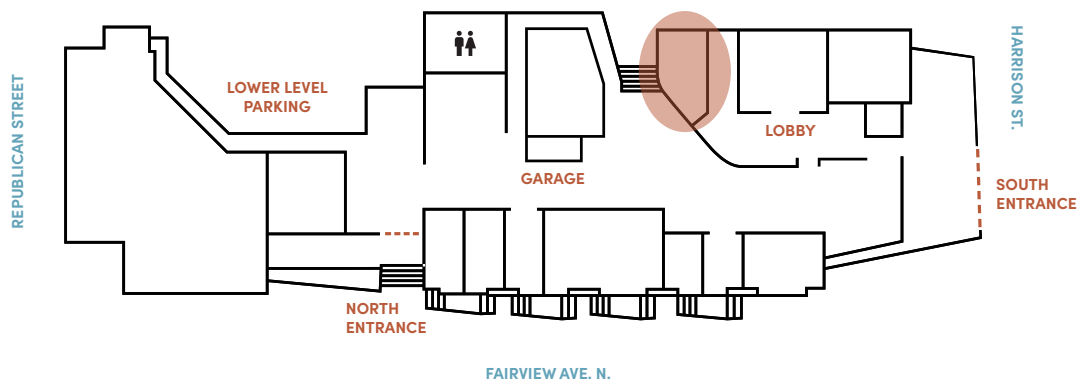
Retail Leasing

AVAILABLE NOW

Open up shop in Fairview Market Hall.

Grow your business or test out a new concept in a small space with flexible lease terms.

Suite 116
615 RSF



RETAIL AVAILABLE

Suite 116

615 RSF retail space equipped with plumbing and ideal for a beauty bar, wine bar/retail, ice cream shop, gift/card shop, & craft cocktail bar.

2025 NNN is \$14.59 PSF.

Contact our leasing team to learn more!

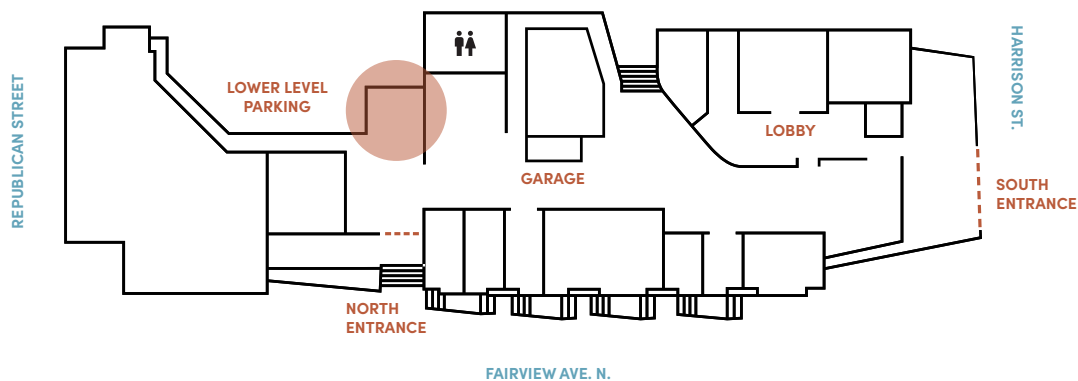
Retail Leasing

AVAILABLE NOW

Open up shop in Fairview Market Hall.

Grow your business or test out a new concept in a small space with flexible lease terms.

Suite 111
424 RSF



RETAIL AVAILABLE

Suite 111

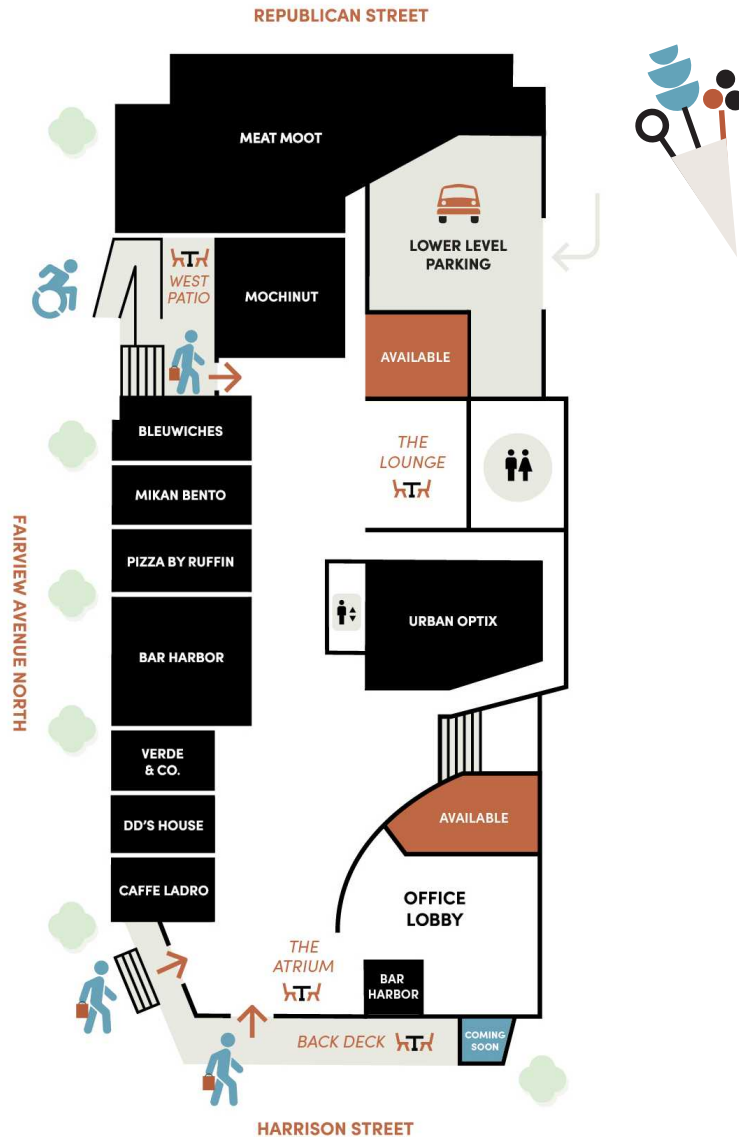
424 RSF retail space ideal for dry goods (clothing, jewelry, etc.).

2025 NNN is \$14.59 PSF.

Contact our leasing team to learn more!

In Good Company

From bouquets to brews to rooftop views, Fairview Market Hall brings together a curated collection of local retailers set in a lively and open space.



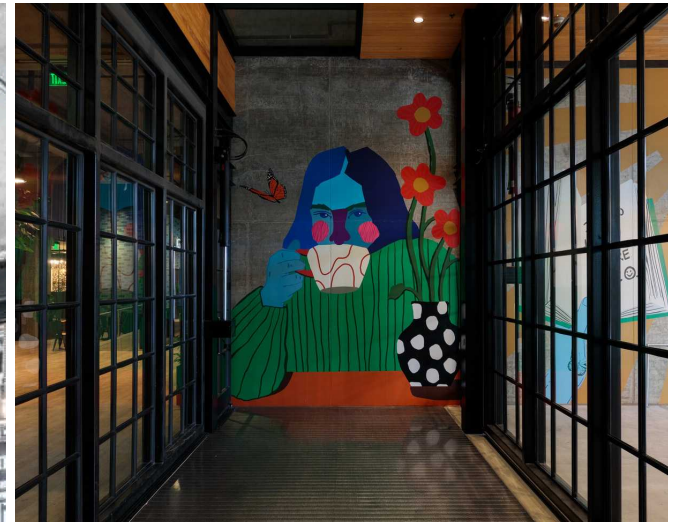
2 RETAIL SPACES
AVAILABLE

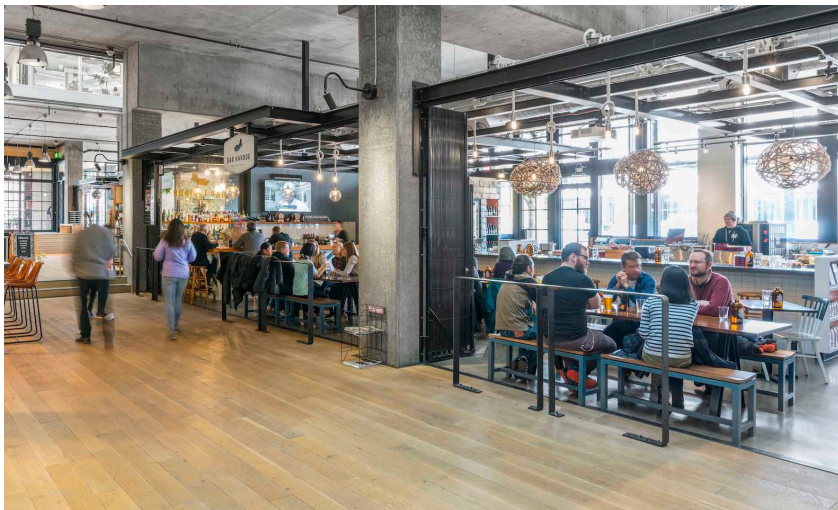
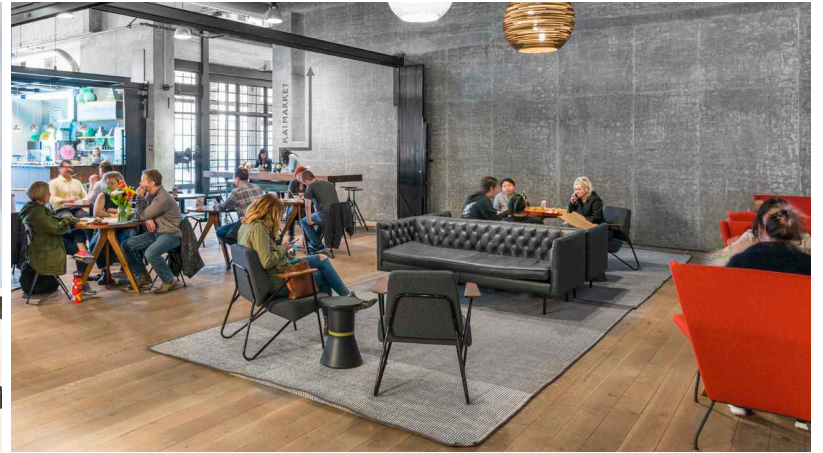
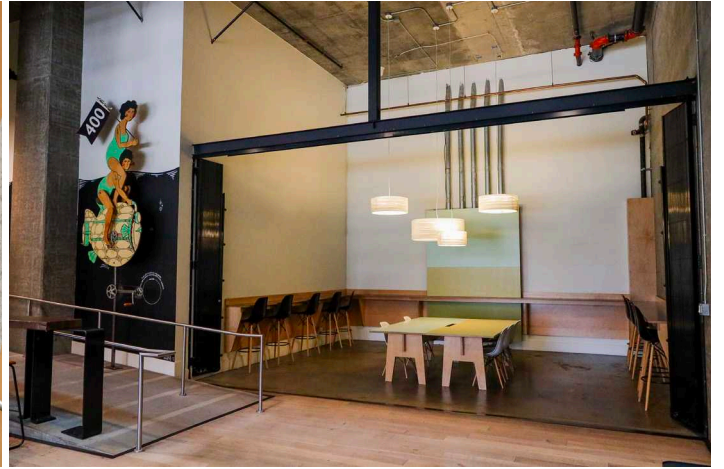
1 RETAIL STORE
COMING SOON

An Urban Destination

Locals and visitors alike spend an hour—or entire day—exploring some of **Seattle's most creative shops and restaurants.**

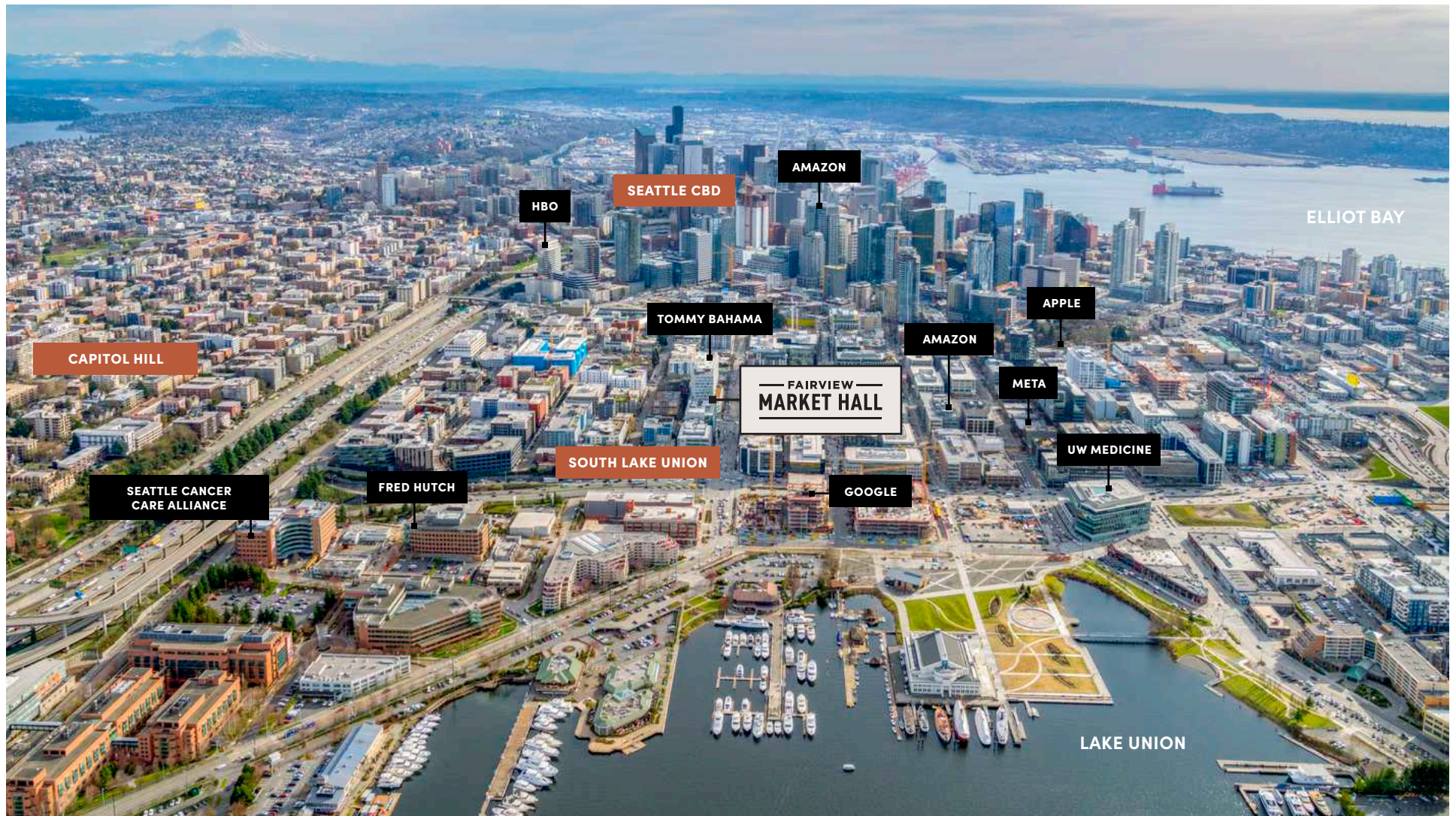
“Meet Me at the Market Hall.”





Your Surroundings

Nestled between Downtown Seattle, Capitol Hill and Lake Union, SLU is home to leading tech companies, startups, residential high-rises, and more.



Your Surroundings



Be part of Seattle's fastest developing urban epicenter.

AREA AVERAGE
HH INCOME: \$173,806

1/2-MILE

Population: 25,778
Daytime: 38,453

1-MILE

Population: 95,489
Daytime: 191,570

3-MILE

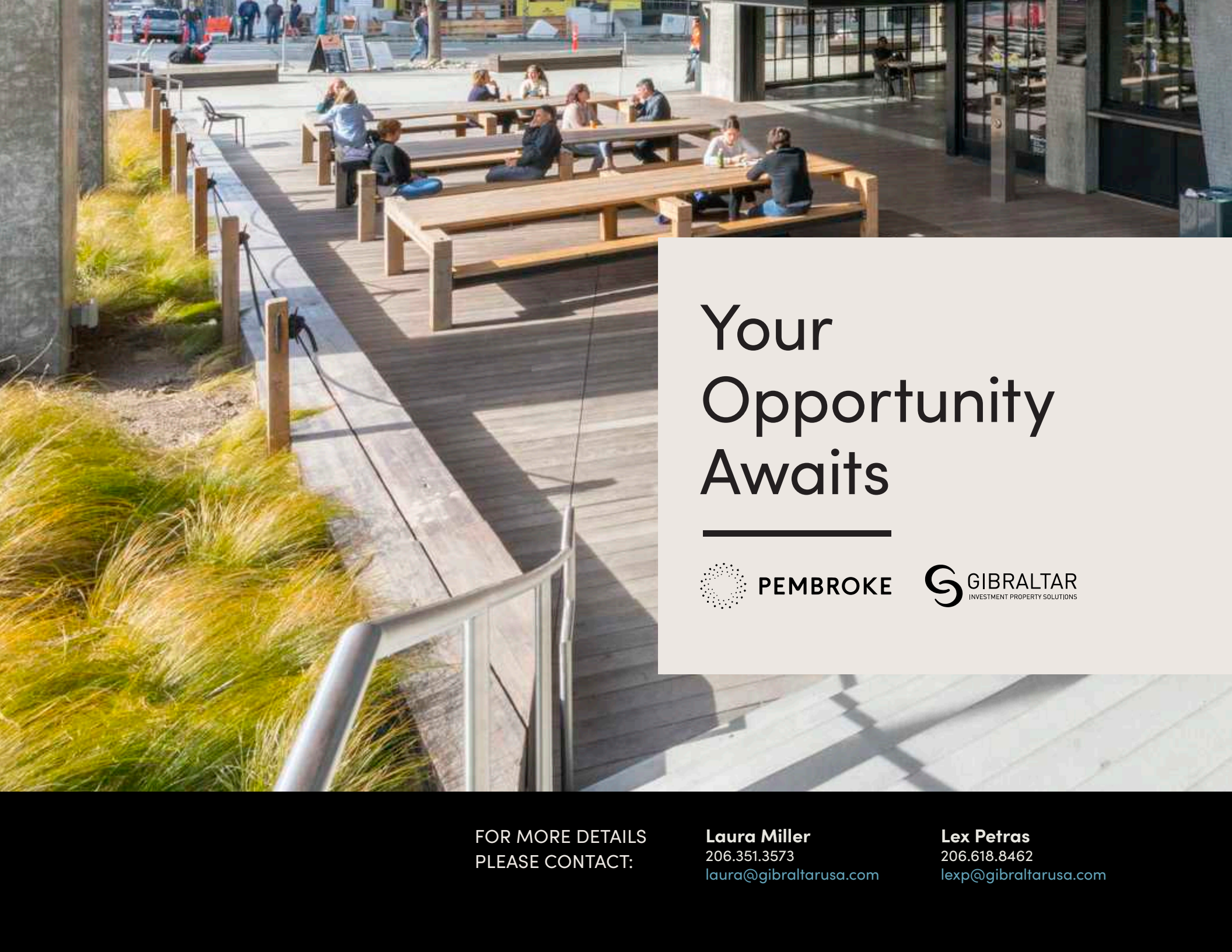
Population: 293,155
Daytime: 541,451

5-MILE

Population: 529,640
Daytime: 764,224

— FAIRVIEW —
MARKET HALL





Your Opportunity Awaits



PEMBROKE



GIBRALTAR
INVESTMENT PROPERTY SOLUTIONS

FOR MORE DETAILS
PLEASE CONTACT:

Laura Miller
206.351.3573
laura@gibraltarusa.com

Lex Petras
206.618.8462
lexp@gibraltarusa.com