



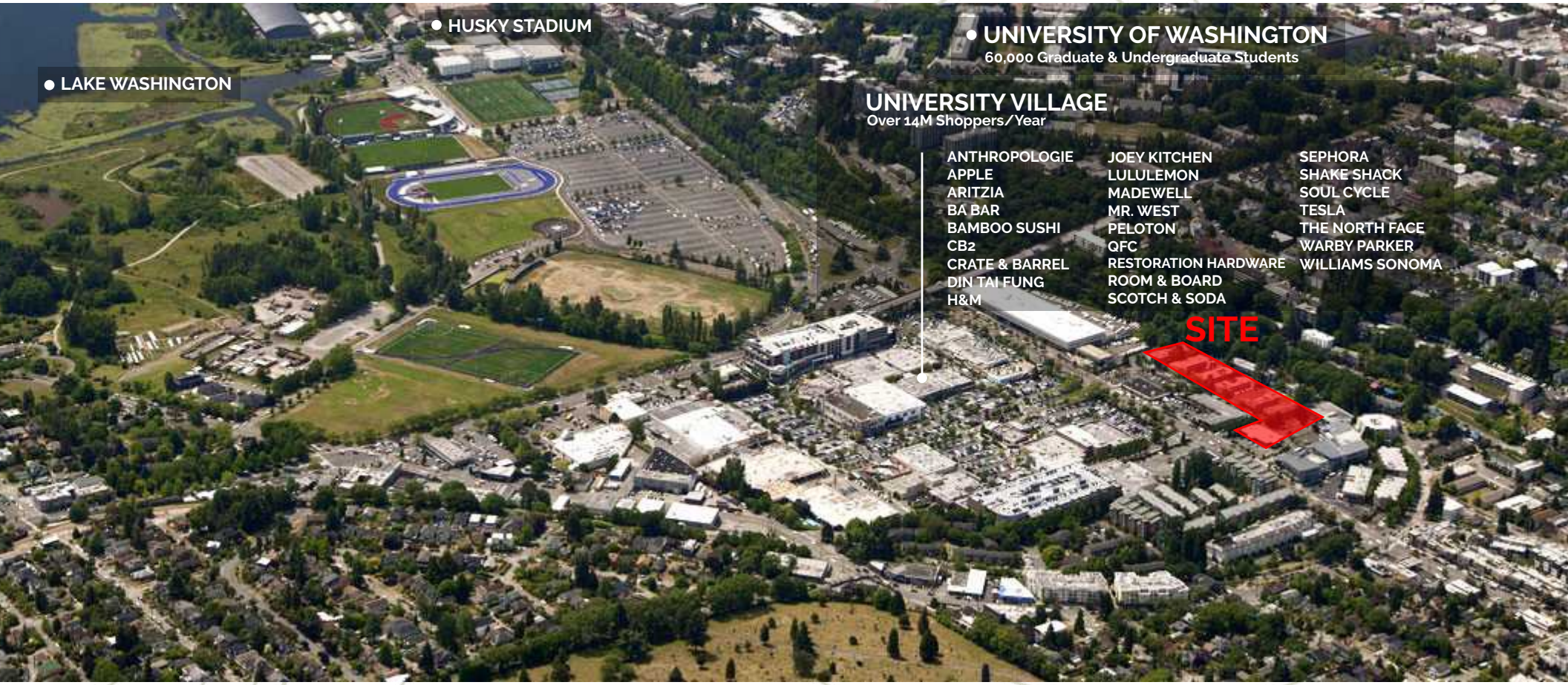
TRAILSIDE II

4907 25th Avenue NE
Seattle, WA 98105



Trailside Community

Across the street from Seattle's Favorite Outdoor Lifestyle Shopping Center



● HUSKY STADIUM

● LAKE WASHINGTON

● UNIVERSITY OF WASHINGTON

60,000 Graduate & Undergraduate Students

UNIVERSITY VILLAGE

Over 14M Shoppers/Year

ANTHROPOLOGIE
APPLE
ARITZIA
BA BAR
BAMBOO SUSHI
CB2
CRATE & BARREL
DIN TAI FUNG
H&M

JOEY KITCHEN
LULULEMON
MADEWELL
MR. WEST
PELTON
QFC
RESTORATION HARDWARE
ROOM & BOARD
SCOTCH & SODA

SEPHORA
SHAKE SHACK
SOUL CYCLE
TESLA
THE NORTH FACE
WARBY PARKER
WILLIAMS SONOMA

SITE



Mr. West Café



Apple



Ba Bar



Restoration Hardware Gallery

TS Project Details

Trailside II is located on the Burke Gilman Trail across the street from University Village and just east of the University of Washington. This dynamic location offers retailers and food and beverage operators a rare opportunity to locate in an exceptional-demographic neighborhood and one of the tightest retail markets in Seattle. The neighborhood features nationally and locally recognized retailers including Apple, Crate & Barrel, Din Tai Fung, Joey Kitchen, Restoration Hardware Gallery, Room & Board, Sephora and many more.

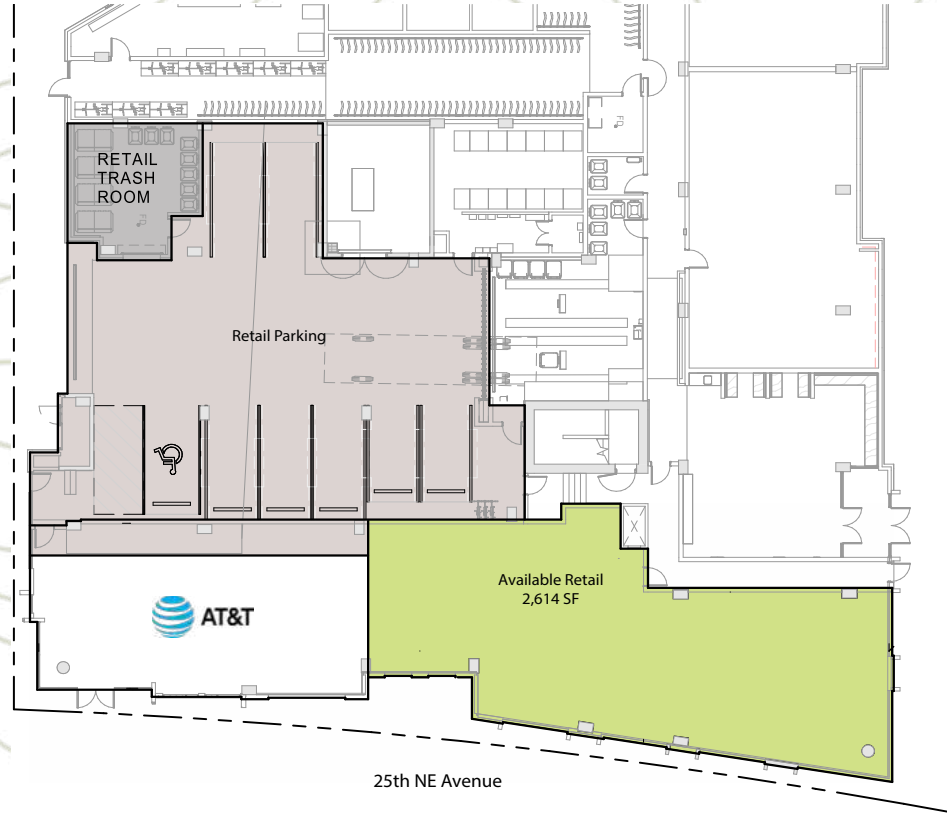
Size.....2,614 SF

RentCall For Rates

NNN's\$15.00 PSF

Availability Immediate

Total Site Population 435 Units/1,366 Beds



Trailside II

DEMOGRAPHIC SUMMARY

10 MINUTE DRIVE DEMOS

RESIDENTS273,133
 AVG HH INCOME\$171,266
 EMPLOYEES..... 176,308

BURKE GILMAN TRAIL

Provides direct connection from the Burke-Gilman Trail to University Village's new pedestrian and bike entrance.

REAL RETAIL

ANDREW MILLER
 206.818.3629
 amiller@real-retail.net

DEBORAH ROSS
 206.849.2351
 deborah@real-retail.net

This information supplied herein has been secured from sources believed to be reliable; however, no representations are made to its accuracy. Prospective tenants or buyers should consult their professional advisors and conduct their own independent investigation. Properties are subject to change in price and/or availability without notice.



TS Site Plan

Unique Location on the Burke-Gilman Trail

Spanning nearly 19 miles between Seattle and Bothell, the Burke-Gilman Trail is as much a thoroughfare for commuting to work and commuting to the University of Washington as it is a staple for social recreation and fitness. The Trail Connector will provide direct connection from the Burke-Gilman Trail to University Village's new pedestrian and bike entrance next to Restoration Hardware Gallery.



View Looking Directly at Burke-Gilman Trail Connection



Provides direct connection from the Burke-Gilman Trail to University Village's new pedestrian and bike entrance.



REAL RETAIL

ANDREW MILLER
206.818.3629
amiller@real-retail.net

DEBORAH ROSS
206.849.2351
deborah@real-retail.net

This information supplied herein has been secured from sources believed to be reliable; however, no representations are made to its accuracy. Prospective tenants or buyers should consult their professional advisors and conduct their own independent investigation. Properties are subject to change in price and/or availability without notice.