

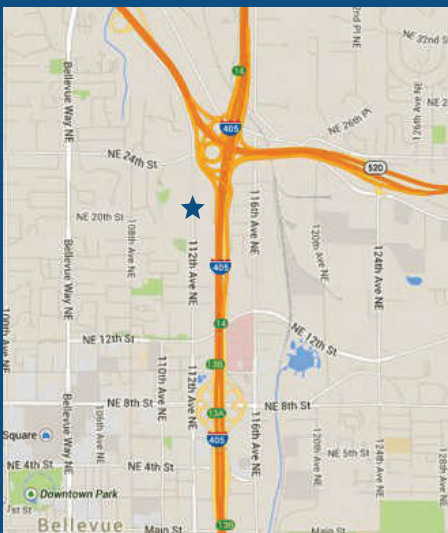
# OFFICE SPACE FOR LEASE



## Bellewood Three 2101 112th Ave. NE, Bellevue, WA

### Building Highlights:

Bellewood Three Office Building offers quality office space in a relaxed, wooded setting just 5 minutes from Downtown Bellevue, 520 and I-405. Adjacent to Hidden Valley Park, with 17 acres of walking trails and ball fields.



### CURRENT AVAILABILITY

- Suite 100 2,202 RSF
- Suite 220 737 RSF
- Ample parking
- Available Immediately
- \$34.50 psf, Full Service
- See floor plan reverse

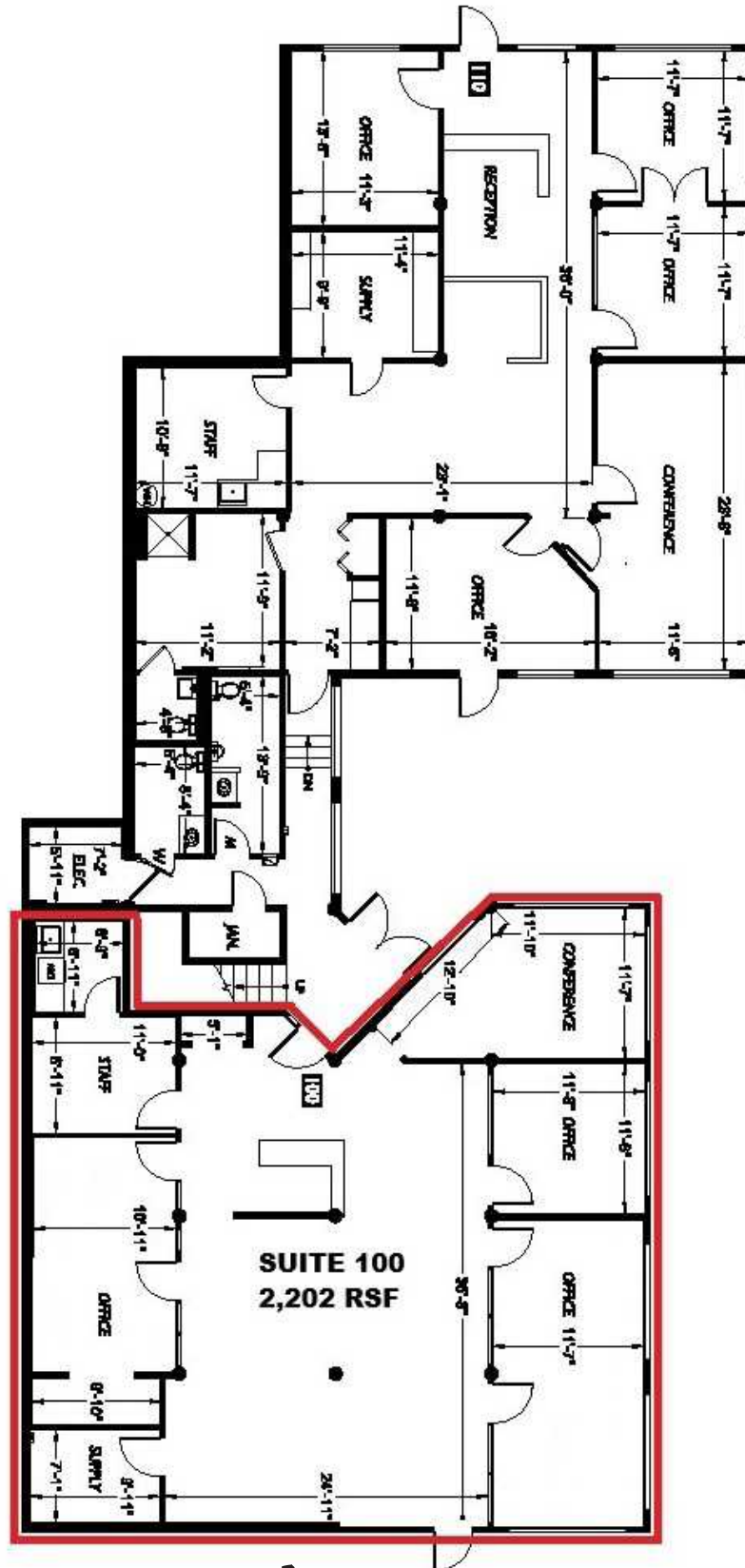
**RAMALEY** PROPERTIES, INC.

Mark Ramaley • P:360-629-9300 • C: 206-818-2707 • [mark@ramaleyproperties.com](mailto:mark@ramaleyproperties.com)

This information supplied herein is from sources we deem reliable. It is provided without any representation, warranty or guarantee, expressed or implied as to its accuracy. Prospective Buyer or Tenant should conduct an independent investigation and verification of all matters deemed to be material, including, but not limited to, statements of income and expenses. Consult your attorney, accountant, or other professional advisor.

# Bellewood Three

2101 112th Ave. NE, Bellevue, WA



1st Floor

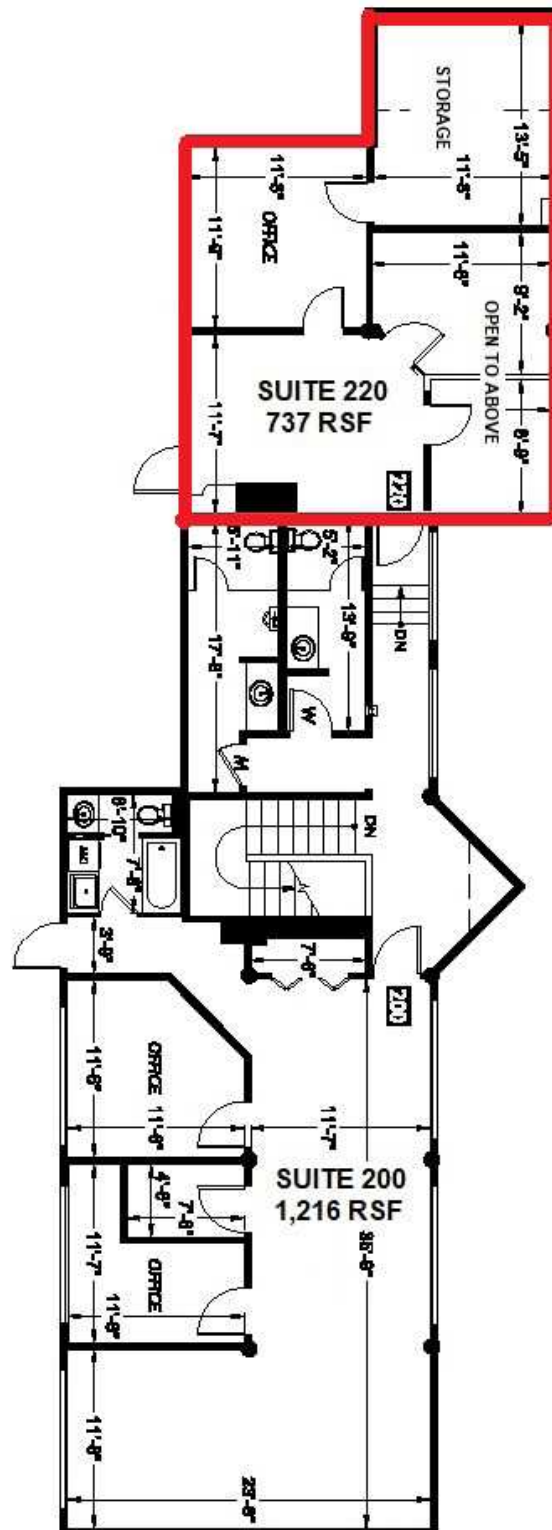


**RAMALEY** PROPERTIES, INC.

Mark Ramaley • P:360-629-9300 • C: 206-818-2707 • [mark@ramaleyproperties.com](mailto:mark@ramaleyproperties.com)

# Bellewood Three

2101 112th Ave. NE, Bellevue, WA



## 2nd Floor

**RAMALEY** PROPERTIES, INC.

Mark Ramaley • P:360-629-9300 • C: 206-818-2707 • [mark@ramaleyproperties.com](mailto:mark@ramaleyproperties.com)