

# PARK 180

FOR LEASE

*Office/Warehouse Space Available in the  
Marymoor Park Area of Redmond*

7102-7126 180TH AVE NE | REDMOND, WA

*6,154 SF*

BUILDING A

*4,107 - 4,680 SF*

BUILDING B





PROPERTY DETAILS

ADDRESS	7102-7126 180th Ave NE Redmond, WA 98052
LEASE RATE	\$2.10/SF Office, \$1.40/SF Warehouse
NNN	\$0.37/SF
HVAC	In office
CLEAR HEIGHT	16'
PARKING	3.5/1000
LOADING	Grade level

AVAILABILITES

Building A	Office	Warehouse	Total
SUITE 103	3,026 SF	3,128 SF	6,154 SF
Building B	Office	Warehouse	Total
SUITE 101/102	2,717 SF	1,963 SF	4,680 SF
SUITE 107	1,318 SF	2,789 SF	4,107 SF

*\$2.10*

OFFICE LEASE  
RATE PSF

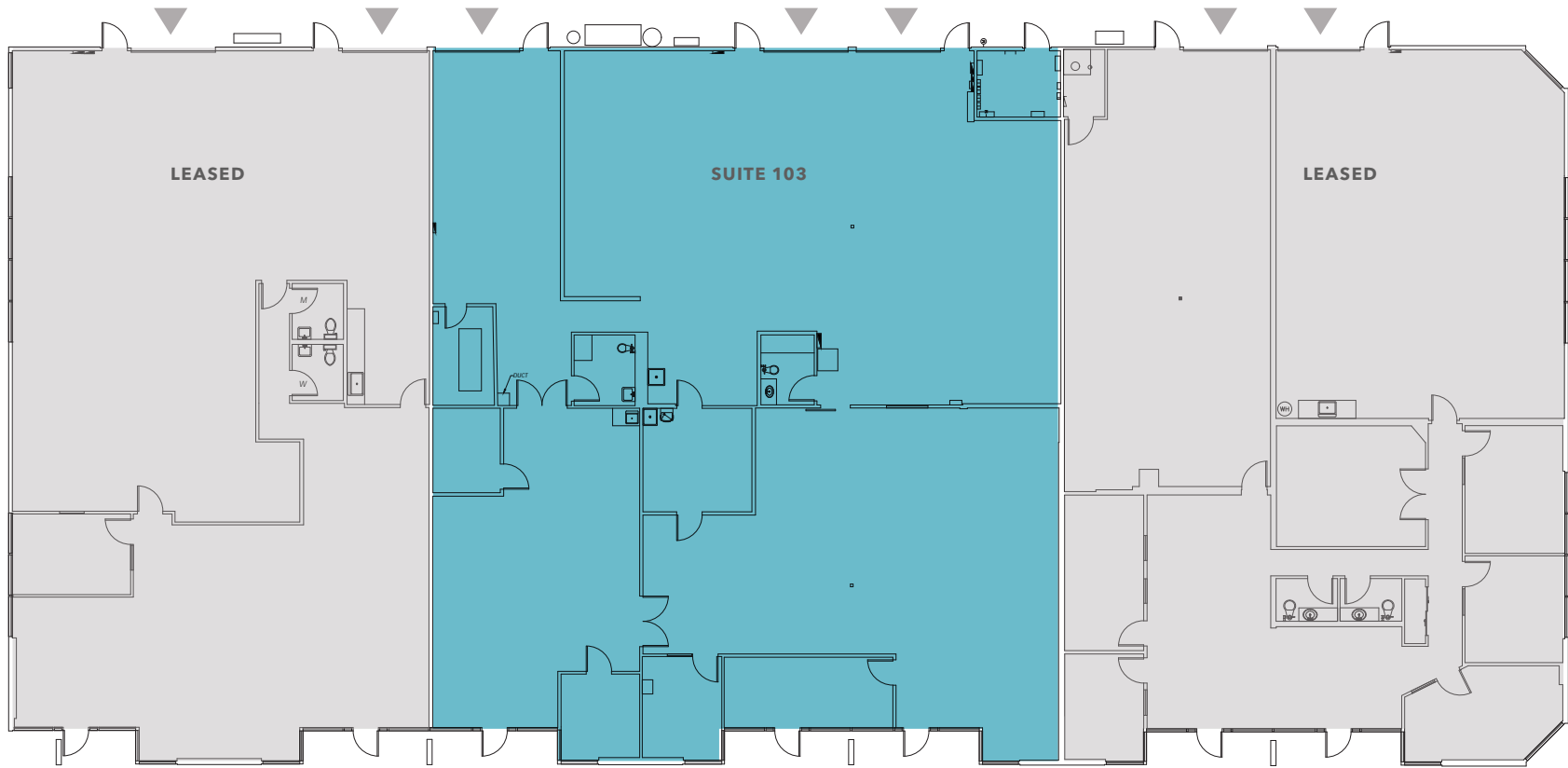
*\$1.40*

WAREHOUSE  
LEASE RATE PSF

*\$0.37*

NNN RATE PSF  
(EST. 2025)

# BUILDING A - FLOOR PLAN

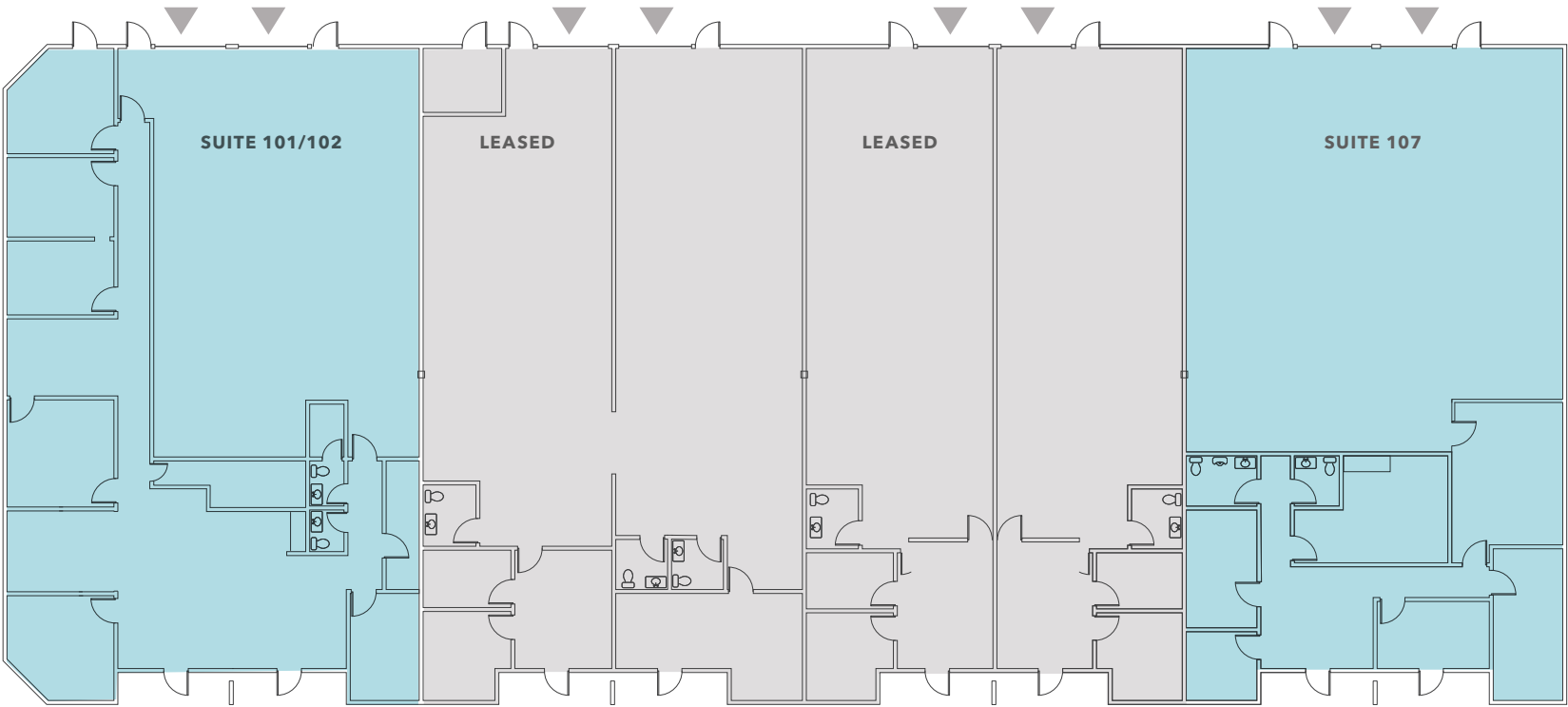


Building A	Office	Warehouse	Total	Available Date
SUITE 103	3,026 SF	3,128 SF	6,154 SF	Now

▲ Grade-level loading



# BUILDING B - FLOOR PLAN

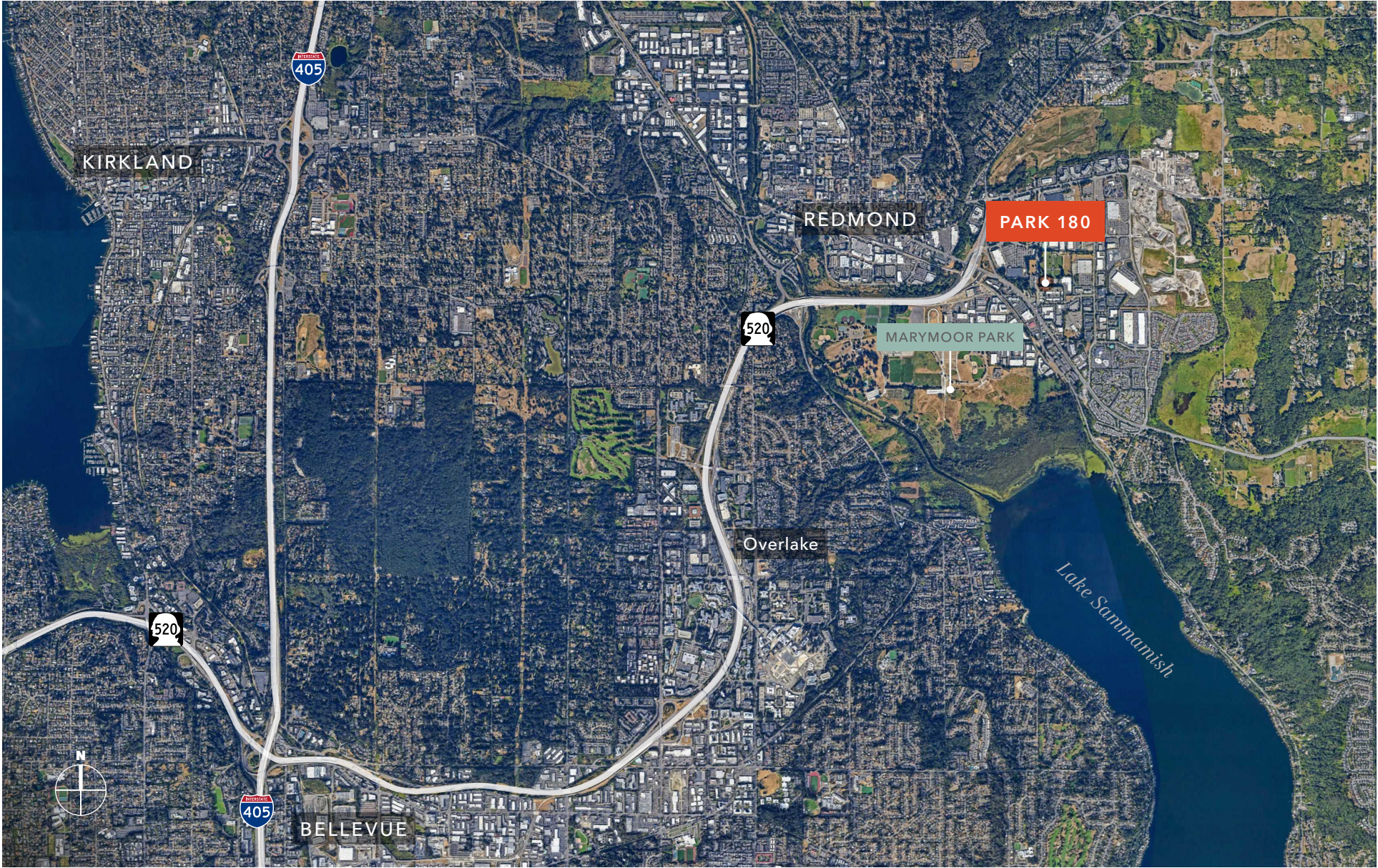


Building B	Office	Warehouse	Total	Available Date
SUITE 101/102	2,717 SF	1,963 SF	4,680 SF	Now
SUITE 107	1,318 SF	2,789 SF	4,107 SF	Now

▲ Grade-level loading











**park 180**

**7102**

**7114**

**7126**

## PARK 180

*For more information about  
this property, please contact*

**TODD GAUTHIER**  
Executive Vice President  
425.450.1118  
[todd.gauthier@kidder.com](mailto:todd.gauthier@kidder.com)

**JASON BLOOM**  
Executive Vice President  
425.450.1102  
[jason.bloom@kidder.com](mailto:jason.bloom@kidder.com)

**GREG FUCHS**  
Associate  
206.992.2727  
[greg.fuchs@kidder.com](mailto:greg.fuchs@kidder.com)

[KIDDER.COM](http://KIDDER.COM)

This information supplied herein is from sources we deem reliable. It is provided without any representation, warranty, or guarantee, expressed or implied as to its accuracy. Prospective Buyer or Tenant should conduct an independent investigation and verification of all matters deemed to be material, including, but not limited to, statements of income and expenses. Consult your attorney, accountant, or other professional advisor. All Kidder Mathews designs are the sole property of Kidder Mathews. Branded materials and layouts are not authorized for use by any other firm or person.

