



# Sublease available

408 N. 35th Street, Suite B & C, Seattle

## Space highlights

**4,764 SF**

**Suite B - 2,451 SF**

**Suite C - 2,313 RSF**

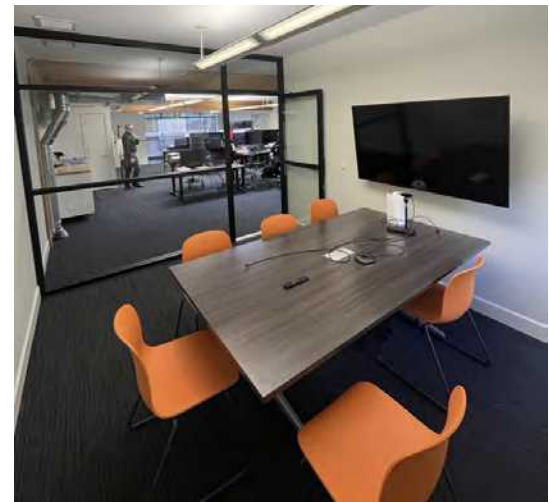
Available now

Rate: \$39.50 **Fully Serviced**

Term through: **July 31, 2027**

## Building highlights

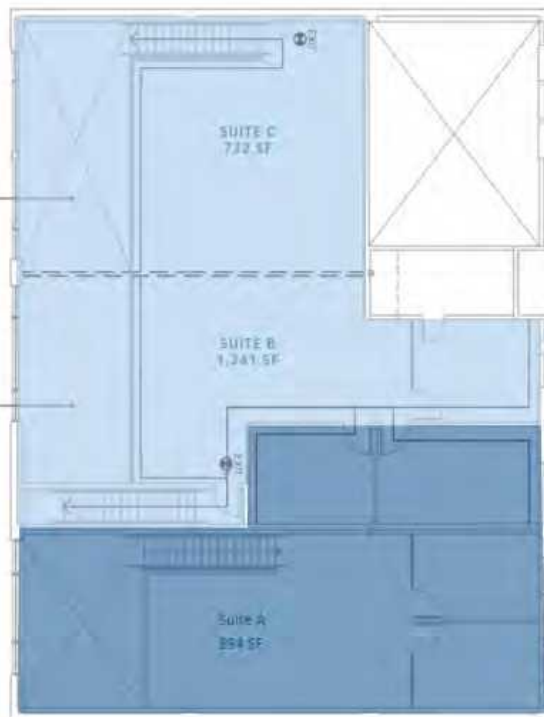
- Modern and newly updated office space with exposed beams, steel, & polished concrete
  - High ceilings & abundant natural light
  - On site & street parking
  - Walking distance to Fremont's best restaurants
  - Existing furniture could be made available
  - Longer direct lease with Landlord available
  - Adjacent 2,137 SF vacancy is available direct.
- Could take entire 6,901 SF building.**



### First Floor Plan



### Mezzanine Floor Plan



**Marcelo Garcés**  
marcelo.garces@jll.com  
+1 206 321 4177

**Tyler Butson**  
tyler.butson@jll.com  
+1 206 427 1267



408 N 35th Street, Seattle



**Marcelo Garcés**

marcelo.garces@jll.com

+1 206 321 4177

**Tyler Butson**

tyler.butson@jll.com

+1 206 427 1267

 **JLL** SEE A BRIGHTER WAY

Although information has been obtained from sources deemed reliable, JLL does not make any guarantees, warranties or representations, express or implied, as to the completeness or accuracy as to the information contained herein. Any projections, opinions, assumptions or estimates used are for example only. There may be differences between projected and actual results, and those differences may be material. JLL does not accept any liability for any loss or damage suffered by any party resulting from reliance on this information. If the recipient of this information has signed a confidentiality agreement with JLL regarding this matter, this information is subject to the terms of that agreement. ©2025. Jones Lang LaSalle IP, Inc. All rights reserved.

# Entire Building 6,901 SF



## First Floor Plan

## Mezzanine Floor Plan

