

4033 East Madison Street

4033 E Madison Street
Seattle, Washington 98112



4033 E Madison Street | Seattle, Washington 98112

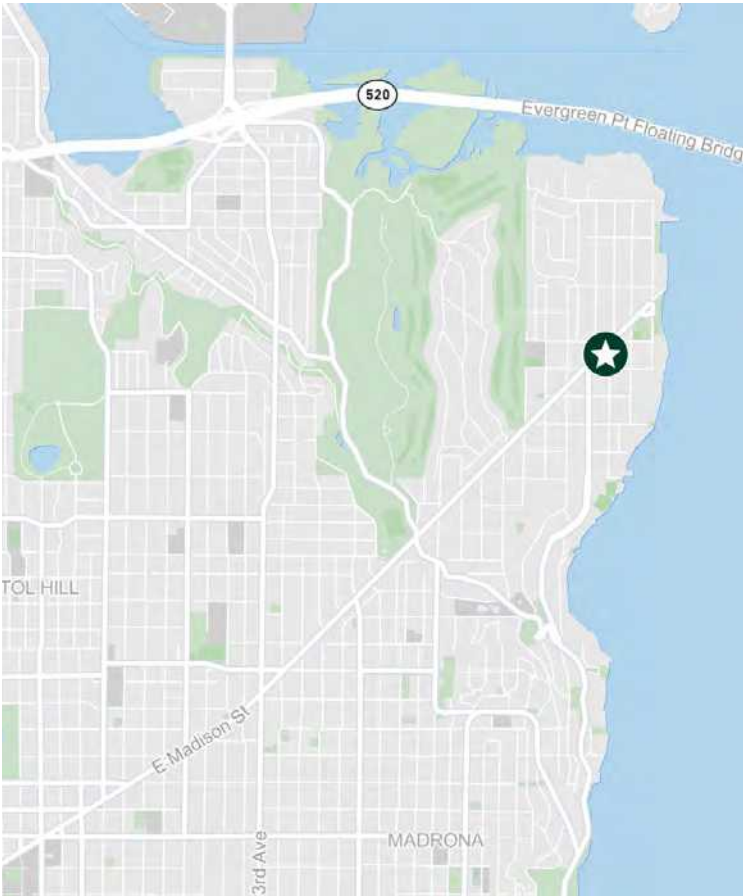
Highlights

Office Space For Lease

- + Located in the heart of Madison Park
- + Neighborhood amenities include Starbucks, Scoop Du Jour Ice Creamery, How to Cook a Wolf, Madison Park Kitchen and Cactus
- + Easy access to Downtown Seattle and Capitol Hill
- + Available now with flexible lease terms.
- + Available suites provide both private unit layout as well as open, collaborative space in Suite 203

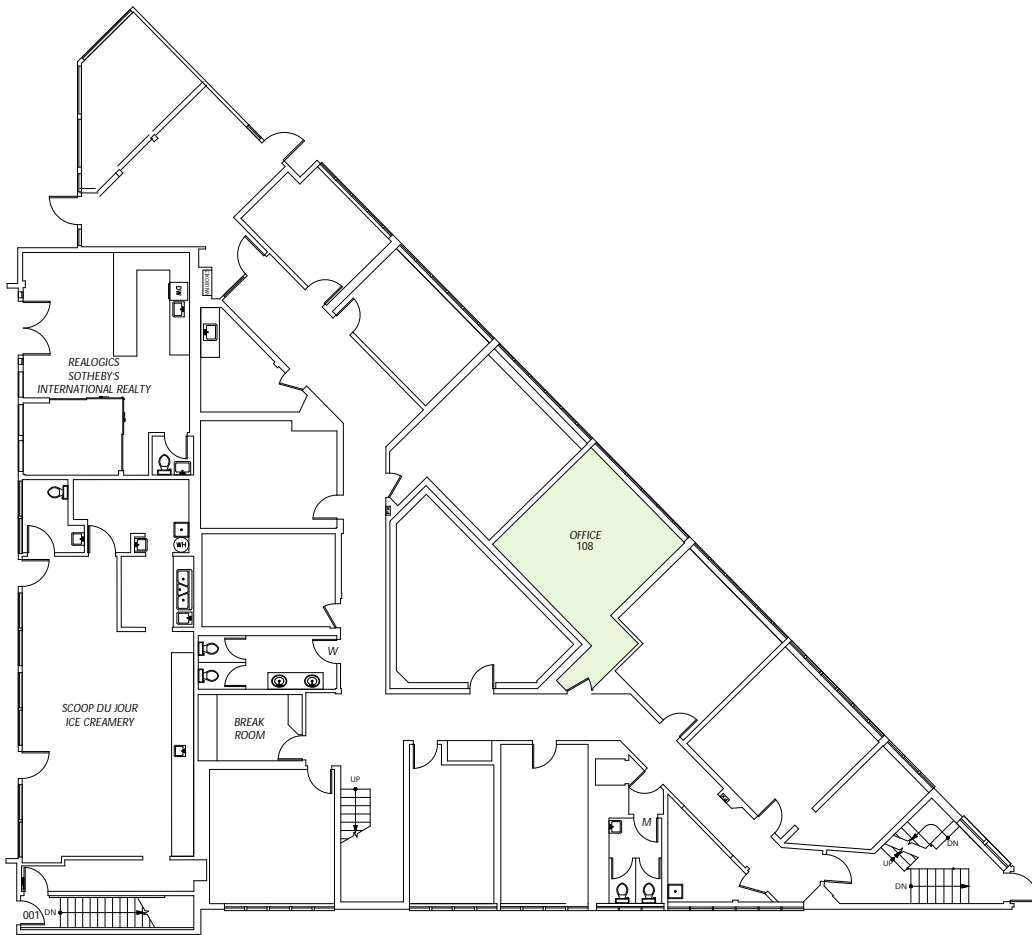
Availabilities

Suite	Size	Comments
Suite 108	449 SF	Available Now
Suite 201	370 SF	Available Now
Suite 202	320 SF	Available Now

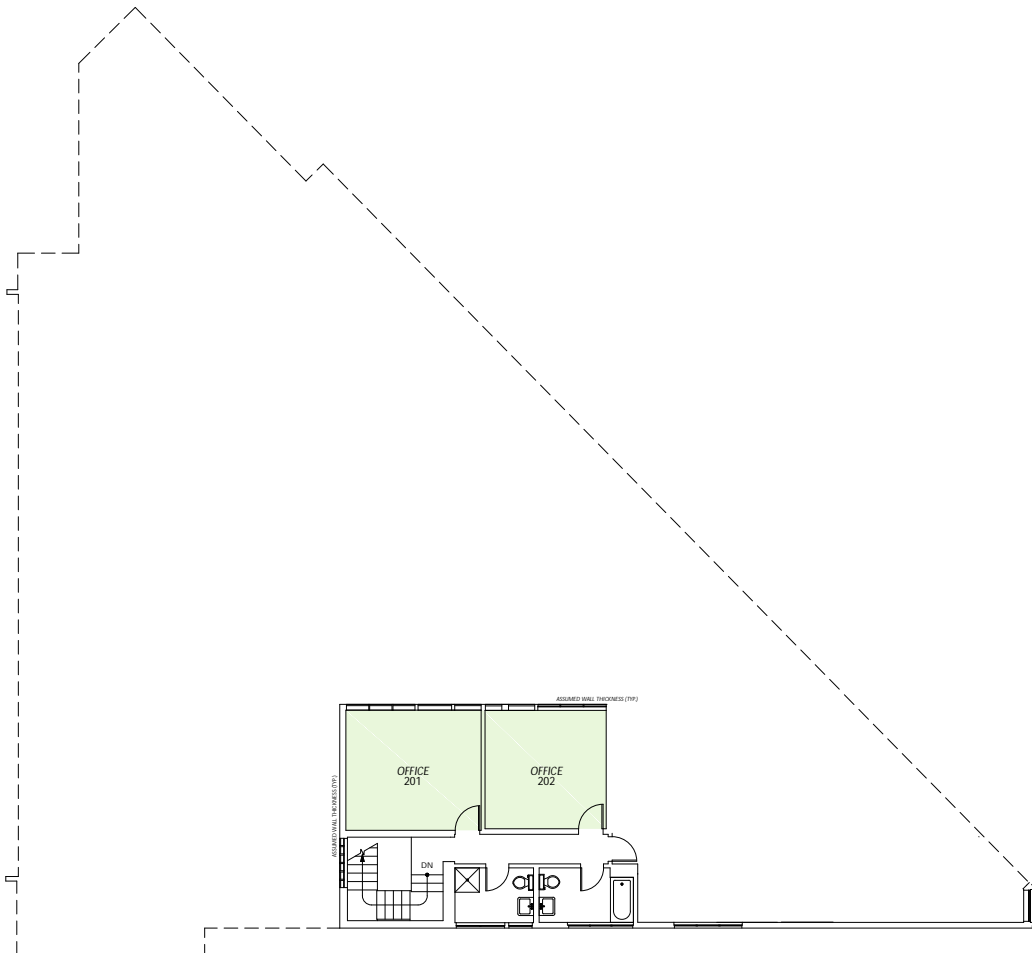


For Lease

Floor 1



Floor 2





Contact Us

Scotta Ashcraft

Senior Vice President

+1 206 292 6063

scotta.ashcraft@cbre.com

© 2025 CBRE, Inc. All rights reserved. This information has been obtained from sources believed reliable, but has not been verified for accuracy or completeness. You should conduct a careful, independent investigation of the property and verify all information. Any reliance on this information is solely at your own risk. CBRE and the CBRE logo are service marks of CBRE, Inc. All other marks displayed on this document are the property of their respective owners, and the use of such logos does not imply any affiliation with or endorsement of CBRE. Photos herein are the property of their respective owners. Use of these images without the express written consent of the owner is prohibited. 10.21.2025 BSO