

FOR LEASE

Willows Business Center



Northwest Building ^{LLC}

14620 - 14950 NE 95TH ST, REDMOND, WA 98052



CONNOR GILCHRIST
425.274.4286
gilchrist@broderickgroup.com

JEFF LIVINGSTON
425.274.4288
livingston@broderickgroup.com

RAWLEY HOLMBERG
425.274.4284
holmberg@broderickgroup.com

The information contained herein has been given to us by the owner or sources which we deem reliable. We have no reason to doubt its accuracy, but we do not guarantee it. Prospective tenants should carefully verify all information contained herein.

FOR LEASE

Willows Business Center



Northwest Building LLC

14620 - 14950 NE 95TH ST, REDMOND, WA 98052



Business Park Highlights



Experienced local
ownership



On-site property
management



Nearby restaurants
& amenities



Concrete-tilt
construction



No redevelopment
clause in Lease
Agreements



Abundant
parking



CONNOR GILCHRIST
425.274.4286
gilchrist@broderickgroup.com

JEFF LIVINGSTON
425.274.4288
livingston@broderickgroup.com

RAWLEY HOLMBERG
425.274.4284
holmberg@broderickgroup.com

The information contained herein has been given to us by the owner or sources which we deem reliable. We have no reason to doubt its accuracy, but we do not guarantee it. Prospective tenants should carefully verify all information contained herein.

FOR LEASE

Willows Business Center



Northwest Building ^{LLC}

14620 - 14950 NE 95TH ST, REDMOND, WA 98052

Site Plan

AVAILABLE SPACE

Building	5	7	7
Suite	<u>14842</u>	<u>14752</u>	<u>14754</u>
Size	3,820 SF (1,856 SF Office)	3,165 SF (1,053 SF Office)	1,368 SF (694 SF Office)
Availability	Now	4/1/2026	Now



CONNOR GILCHRIST
425.274.4286
gilchrist@broderickgroup.com

JEFF LIVINGSTON
425.274.4288
livingston@broderickgroup.com

RAWLEY HOLMBERG
425.274.4284
holmberg@broderickgroup.com

The information contained herein has been given to us by the owner or sources which we deem reliable. We have no reason to doubt its accuracy, but we do not guarantee it. Prospective tenants should carefully verify all information contained herein.

FOR LEASE

Willows Business Center



Northwest Building LLC

14620 - 14950 NE 95TH ST, REDMOND, WA 98052

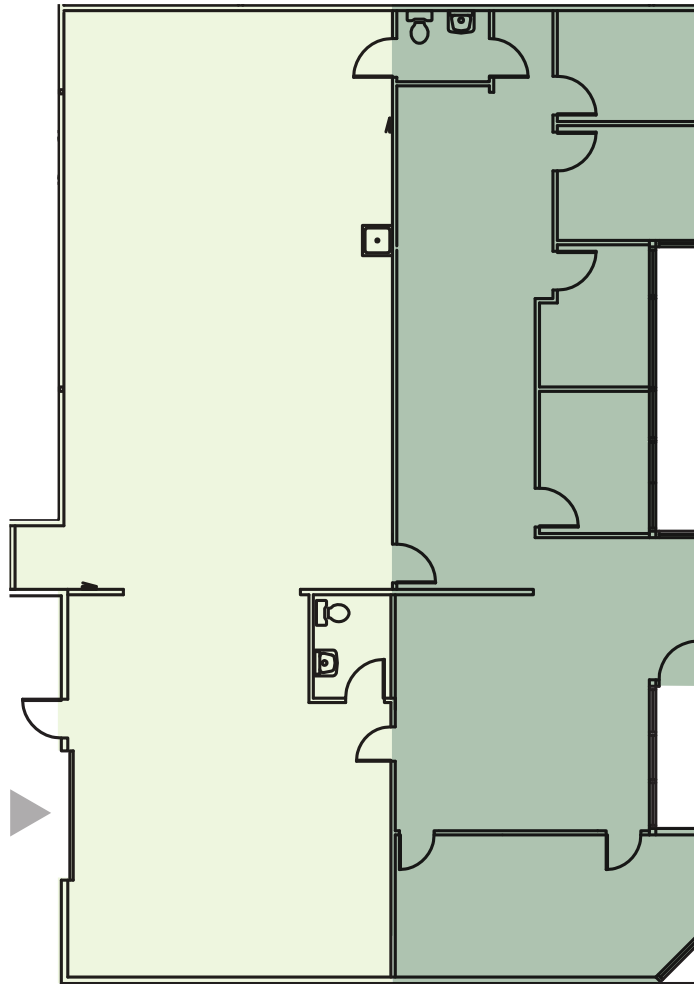
BUILDING 5 - SUITE 14842

Available Now

1,964 SF Warehouse

1,856 SF Office

3,820 SF Total



CONNOR GILCHRIST
425.274.4286
gilchrist@broderickgroup.com

JEFF LIVINGSTON
425.274.4288
livingston@broderickgroup.com

RAWLEY HOLMBERG
425.274.4284
holmberg@broderickgroup.com

The information contained herein has been given to us by the owner or sources which we deem reliable. We have no reason to doubt its accuracy, but we do not guarantee it. Prospective tenants should carefully verify all information contained herein.

FOR LEASE

Willows Business Center



Northwest Building LLC

14620 - 14950 NE 95TH ST, REDMOND, WA 98052

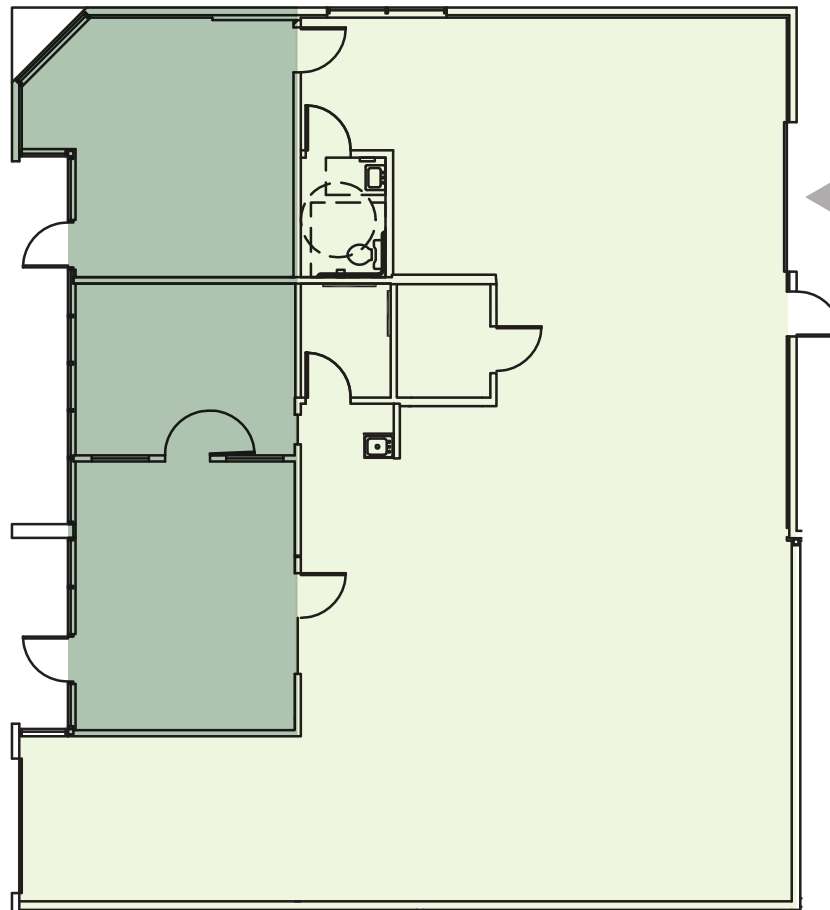
BUILDING 7 - SUITE 14752

Available 4/1/2026

2,112 SF Warehouse

1,053 SF Office

3,165 SF Total



CLICK TO TAKE A
VIRTUAL TOUR



CONNOR GILCHRIST
425.274.4286
gilchrist@broderickgroup.com

JEFF LIVINGSTON
425.274.4288
livingston@broderickgroup.com

RAWLEY HOLMBERG
425.274.4284
holmberg@broderickgroup.com

The information contained herein has been given to us by the owner or sources which we deem reliable. We have no reason to doubt its accuracy, but we do not guarantee it. Prospective tenants should carefully verify all information contained herein.

FOR LEASE

Willows Business Center



Northwest Building ^{LLC}

14620 - 14950 NE 95TH ST, REDMOND, WA 98052

BUILDING 7 - SUITE 14754

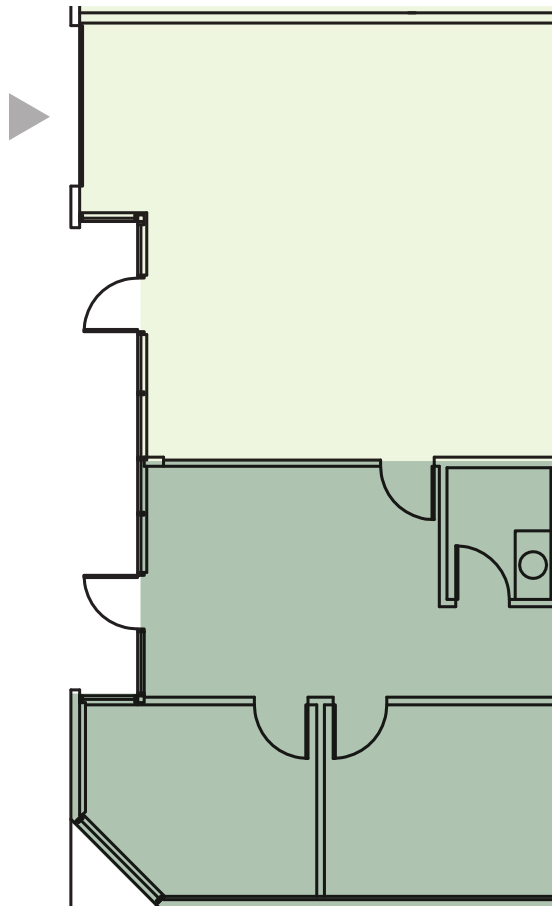
Available Now

674 SF Warehouse

694 SF Office

1,368 SF Total

-  OFFICE
-  WAREHOUSE
-  GRADE-LEVEL LOADING



CONNOR GILCHRIST
425.274.4286
gilchrist@broderickgroup.com

JEFF LIVINGSTON
425.274.4288
livingston@broderickgroup.com

RAWLEY HOLMBERG
425.274.4284
holmberg@broderickgroup.com

The information contained herein has been given to us by the owner or sources which we deem reliable. We have no reason to doubt its accuracy, but we do not guarantee it. Prospective tenants should carefully verify all information contained herein.

FOR LEASE

Willows Business Center



Northwest Building LLC

14620 - 14950 NE 95TH ST, REDMOND, WA 98052



NEARBY AMENITIES

1. Firecreek Grill
2. Willows Run Golf Complex
3. La Cherie Bakery
4. Pasta ya Gotcha
5. Willows Deli
6. Big Block Brewing
7. Eastside Gym
8. Black Raven Brewing
9. Zuacer Pizza
10. Subway

5 MINUTES TO REDMOND TOWN CENTER

7 MINUTES TO TOTEM LAKE MALL



CONNOR GILCHRIST
425.274.4286
gilchrist@broderickgroup.com

JEFF LIVINGSTON
425.274.4288
livingston@broderickgroup.com

RAWLEY HOLMBERG
425.274.4284
holmberg@broderickgroup.com

The information contained herein has been given to us by the owner or sources which we deem reliable. We have no reason to doubt its accuracy, but we do not guarantee it. Prospective tenants should carefully verify all information contained herein.