

# FOR LEASE



9922 E Montgomery Ave & 10021 E Knox Avenue, Spokane Valley, WA 99206

## MONTGOMERY BUSINESS PARK OFFICE | WAREHOUSE SPACE AVAILABLE

PARCEL NUMBER	45084.0214
LOT SIZE	±7.07 Acres
TOTAL BUILDING SIZE	±95,680 SF
YEAR BUILT	1976

**ERIK NELSON, SIOR Managing Broker**  
509.220.4042 | erik.nelson@kiemlehagood.com

**CRAIG SOEHREN, Broker**  
509.755.7548 | craigs@kiemlehagood.com

**KIEMLE  
HAGOOD**  
601 W MAIN AVENUE, SUITE 400  
SPOKANE, WASHINGTON 99201

# UNIT #12

## MONTGOMERY BUSINESS PARK

9922 E Montgomery Ave & 10021 E Knox Ave  
Spokane, Washington 99206

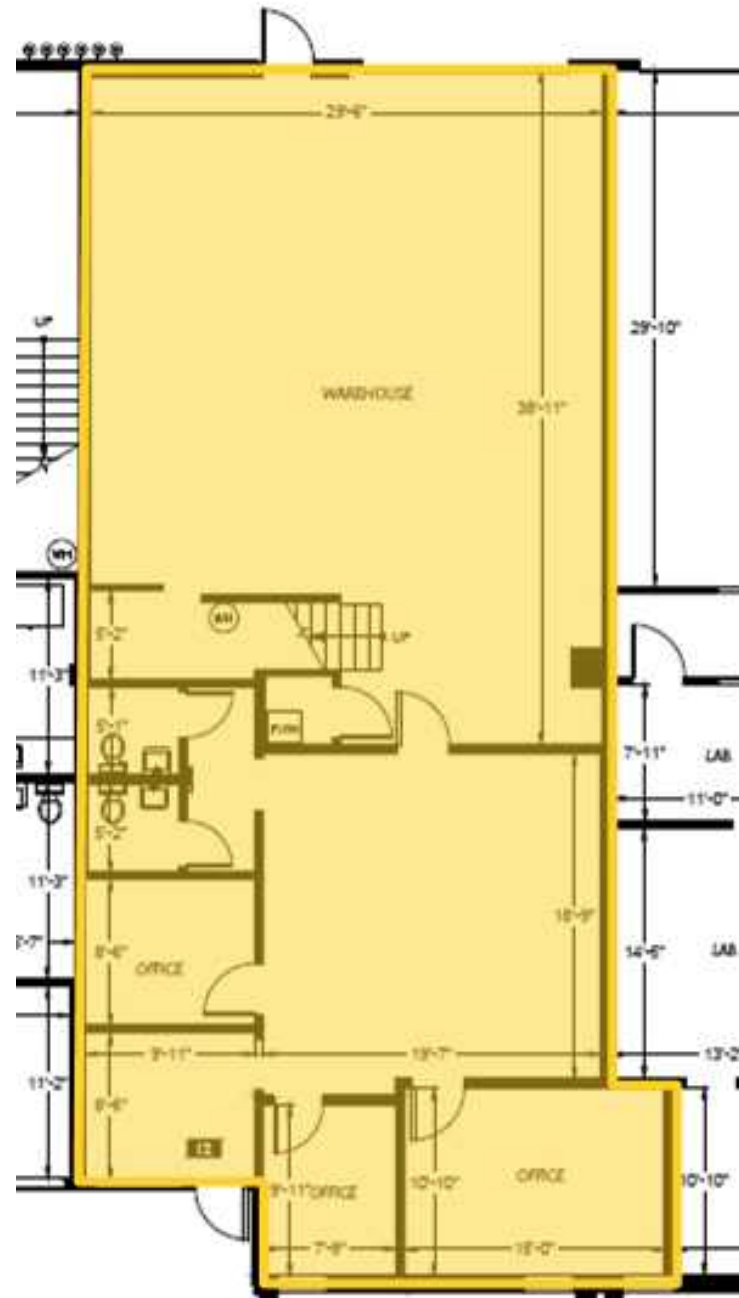
### UNIT 12

Lease Rate | \$2,137 per Month, NNN

Lease Type | NNN

Main Floor SF | ±2,137 SF

- Office + Warehouse space available
- One (1) 12'w x 14'h grade level overhead door





# UNIT #16

## MONTGOMERY BUSINESS PARK

9922 E Montgomery Ave & 10021 E Knox Ave  
Spokane, Washington 99206

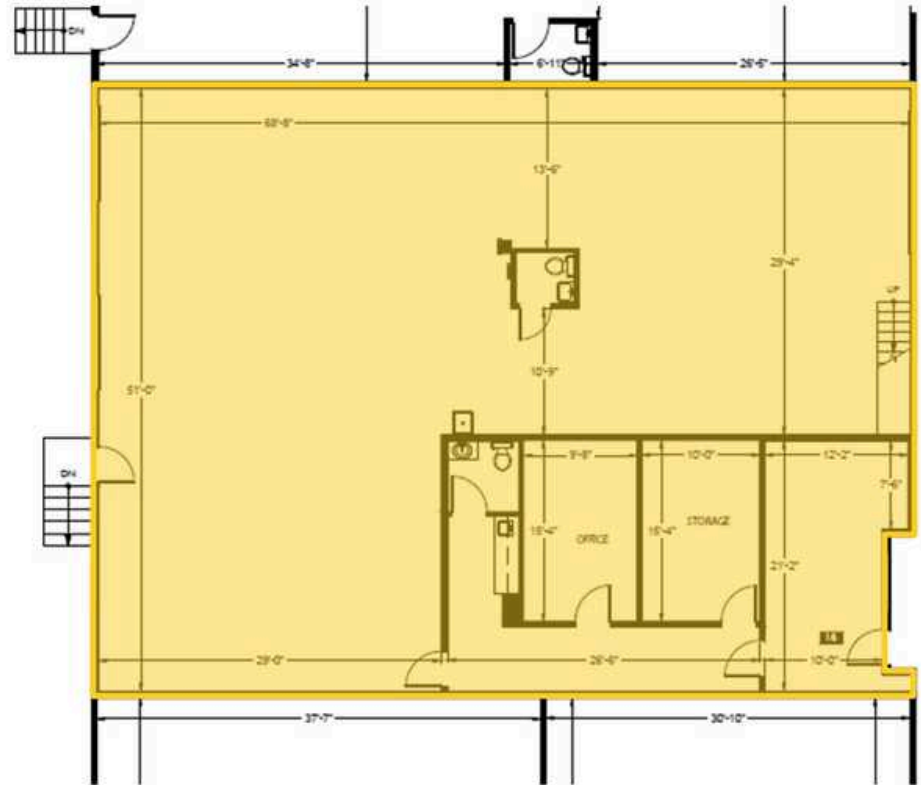
### UNIT 16

Lease Rate | \$3,568 per Month, NNN

Lease Type | NNN

Main Floor SF | ±3,568 SF

- Office + Warehouse space available
- One (1) 12'w x 14'h grade level overhead door
- One (1) dock high door

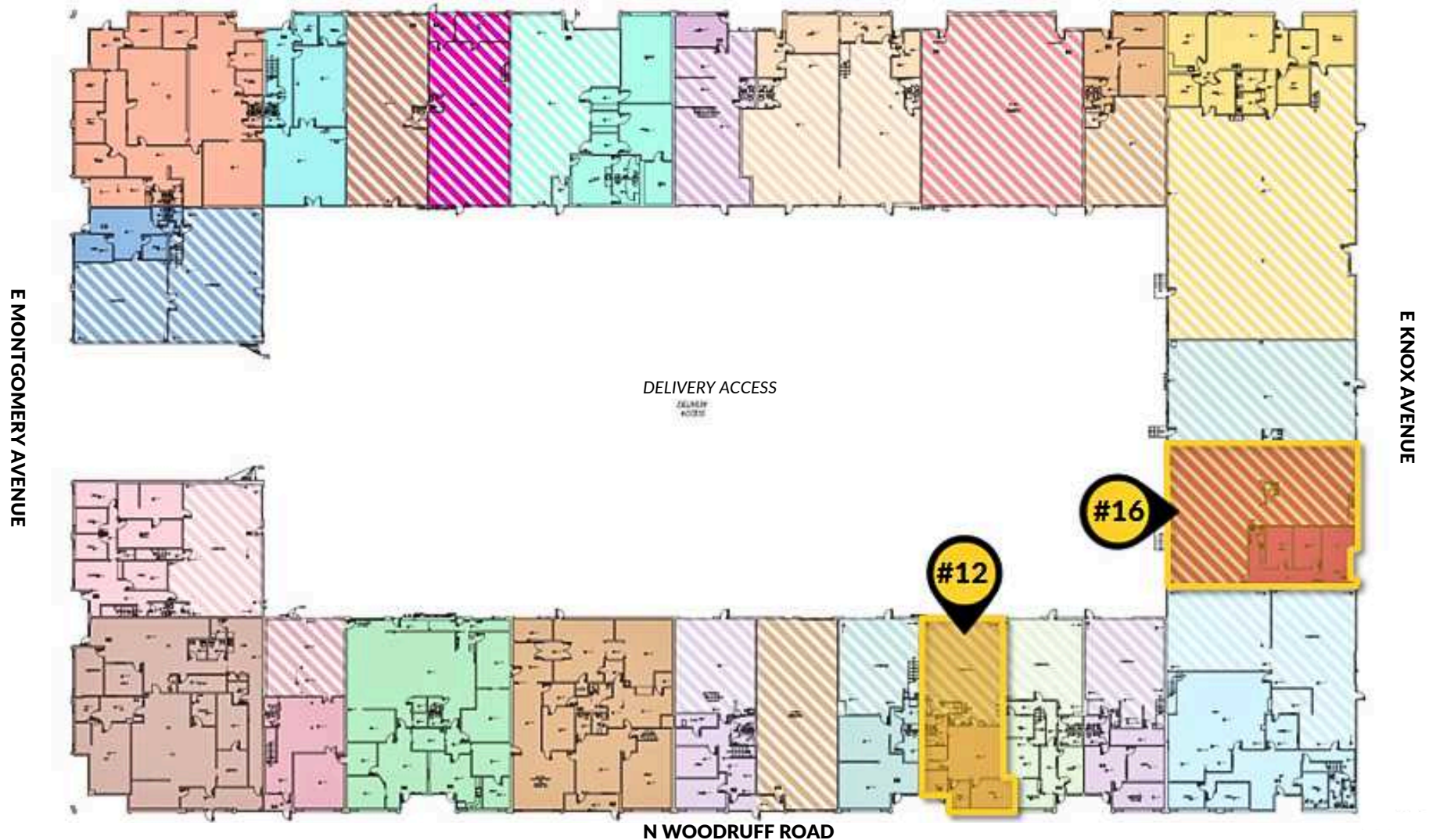


# FLOOR PLAN

## MONTGOMERY BUSINESS PARK

9922 E Montgomery Ave & 10021 E Knox Ave  
Spokane, Washington 99206

Solid Fill | Office Space  
Striped Fill | Warehouse Space





No warranty or representation, expressed or implied, is made by Kiemle Hagood, its agents or its employees as to the accuracy of the information contained herein. All information furnished is from sources deemed reliable and submitted subject to errors, omissions, change of terms and conditions, prior sale, lease or financing, or withdrawal without notice. No one should rely solely on the above information, but instead should conduct their own investigation to independently satisfy themselves.