



Northwood Industrial Park - North

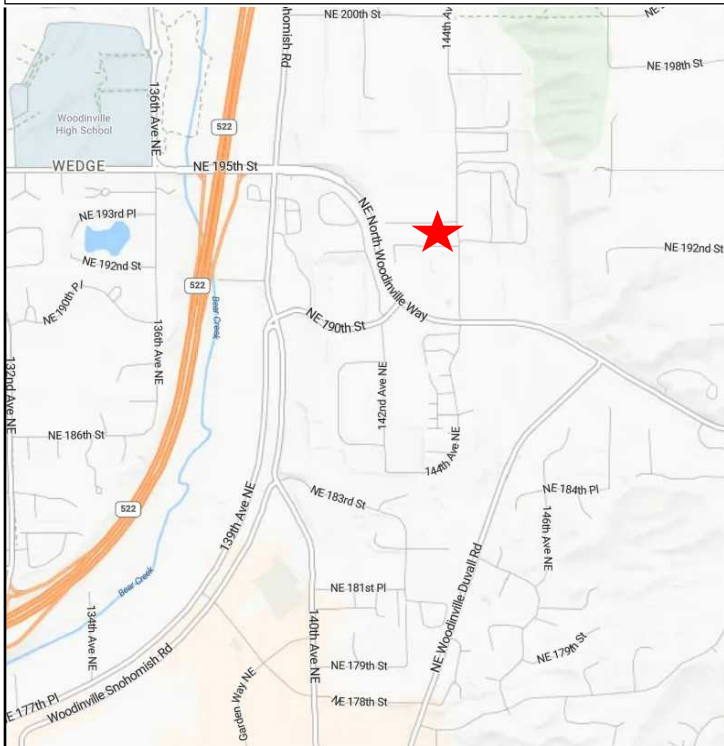
19205 144th Ave. NE, Building D, Woodinville, WA

NOW LEASING

**Warehouse/
Manufacturing Space**

FEATURES

- Space Available:** 7,875 SF includes:
- 1,800 SF A/C Office (5 private offices)
 - 1,800 SF Production Space
 - 4,275 SF Warehouse/Mfg.
- Power:** 200 amps 277/480v
- OH Doors:** One (1) GL door 16'x14'
- Height:** 24 ft.
- Access:** Near SR522 at 195th Street
- Lease Rate:** Office: \$2.10/SF/Mo NNN
Whse/Prod: \$1.50/SF/Mo NNN
NNN: \$0.32/SF/Mo
- Available:** January 1, 2026



Contact Exclusive Agent

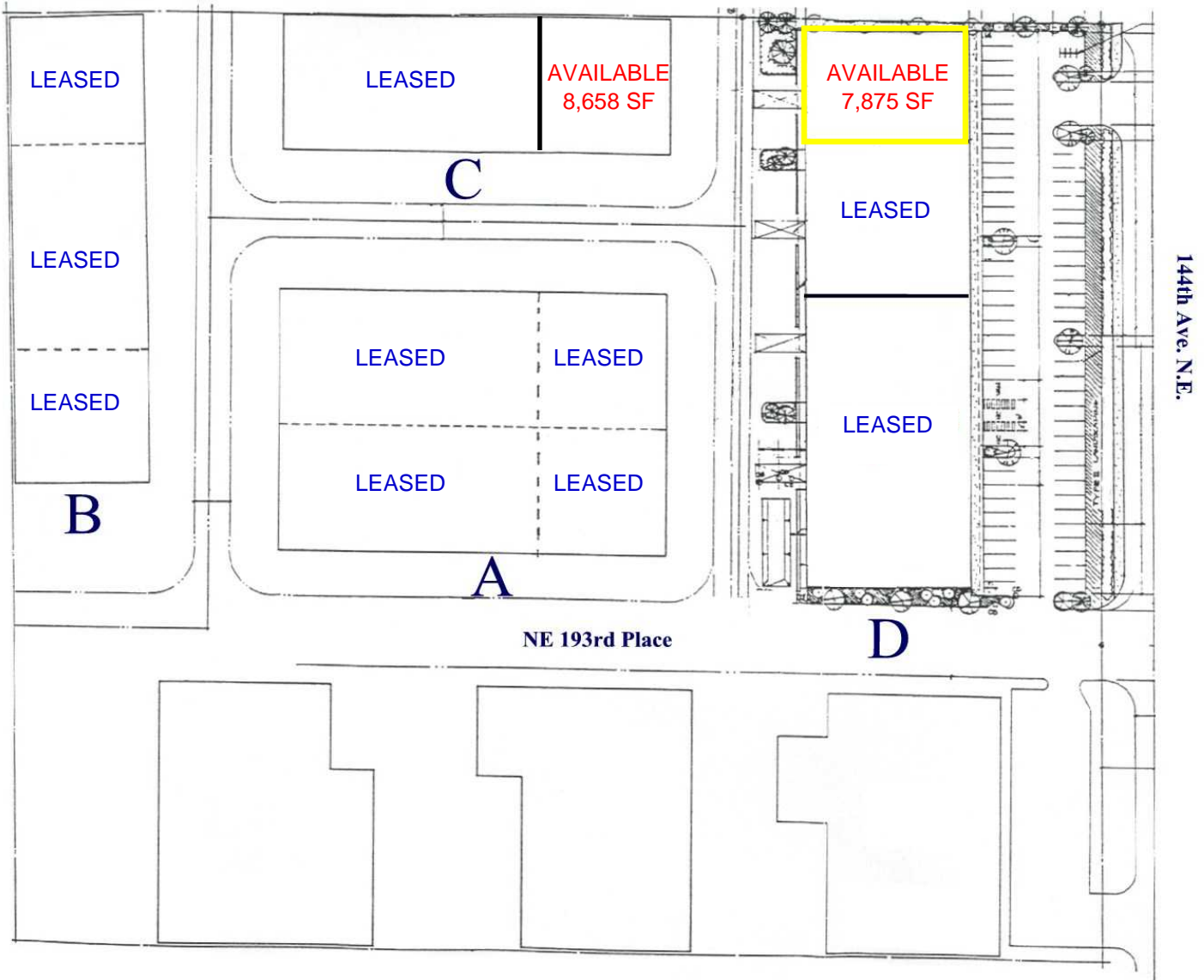


Robert B. Chadek
2050 112th Avenue SE, Suite 230
Bellevue, WA 98004
(425) 453-5354

19205 144th Avenue NE, Building D, Woodinville, WA

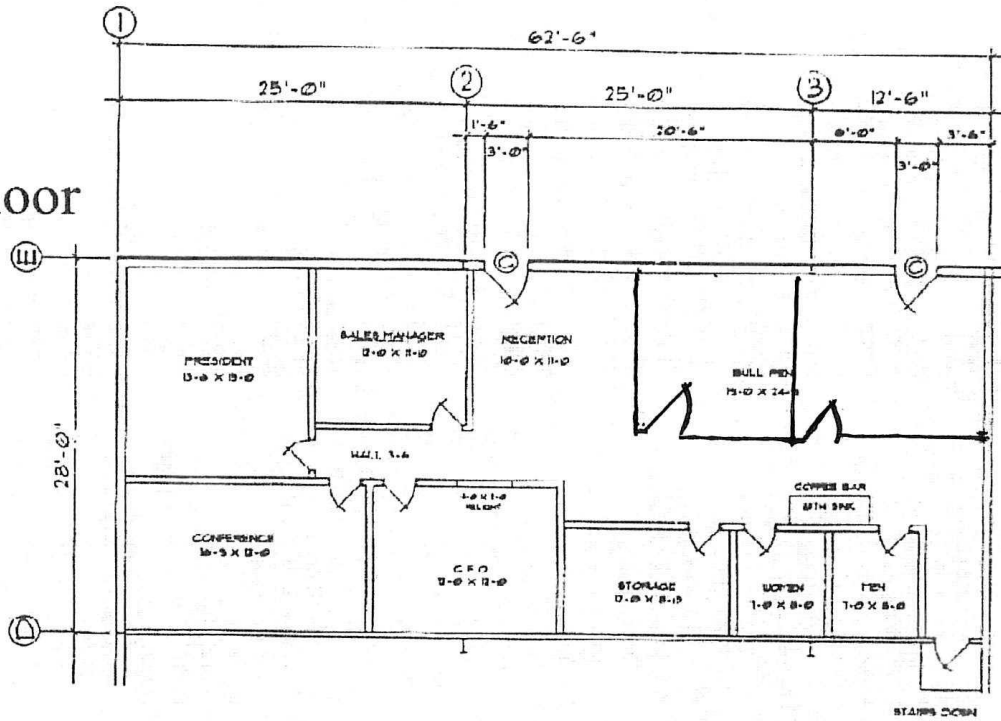
SITE PLAN

Northwood Industrial Park - North

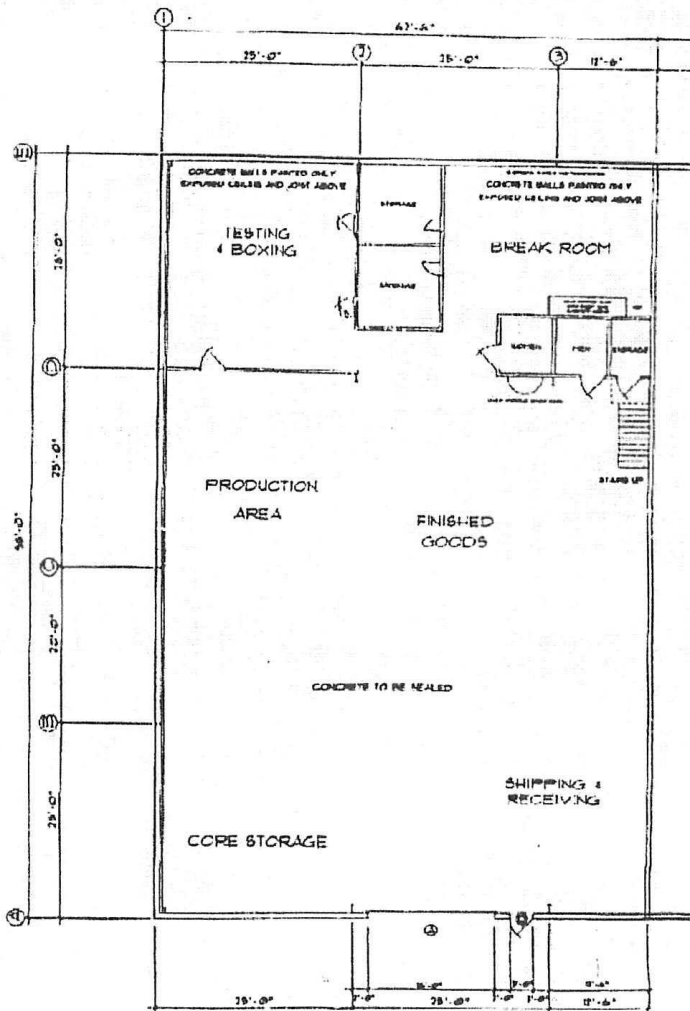


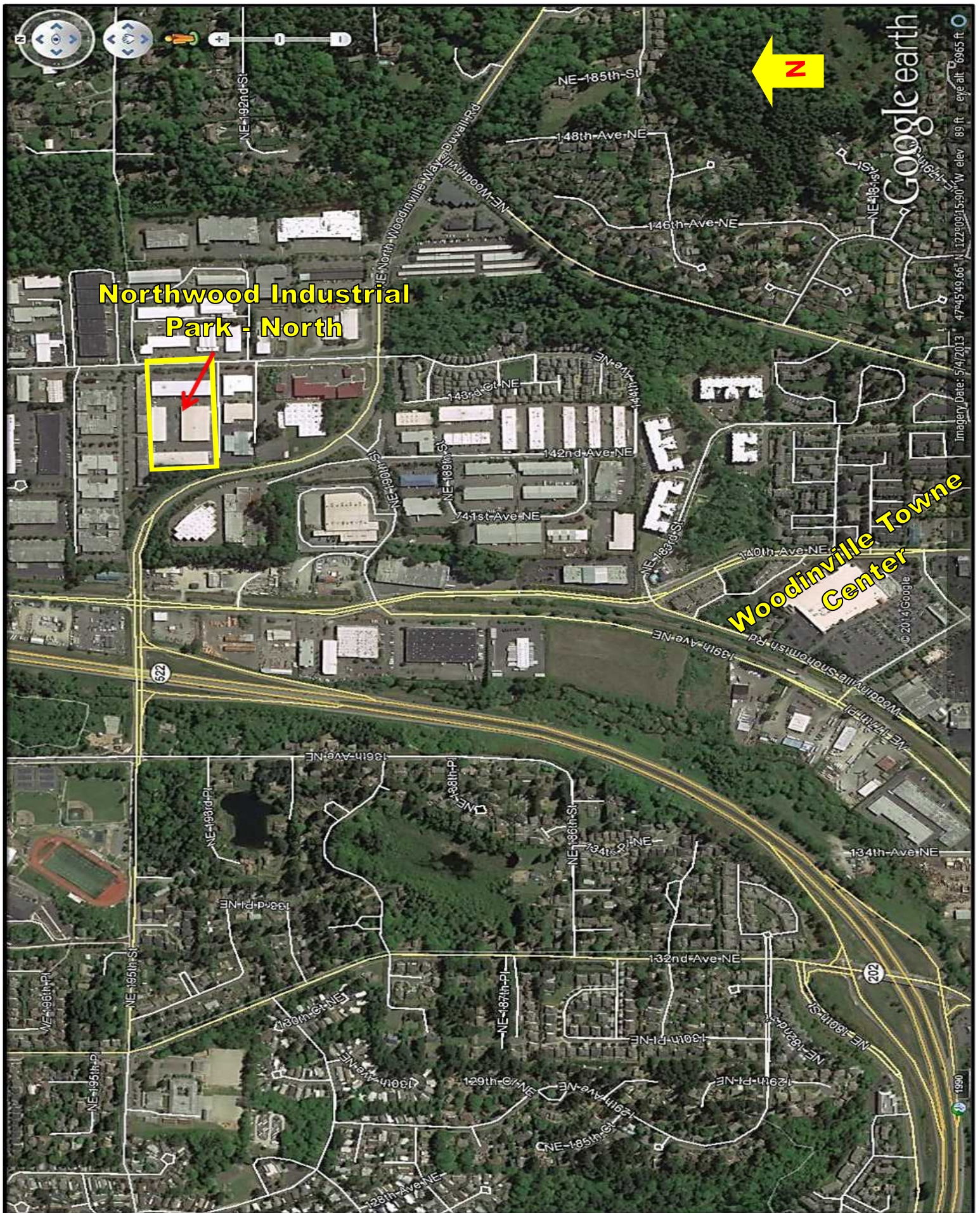
FLOOR PLAN

Upper Floor



Lower Floor





The information contained herein has been obtained from sources believed to be reliable. While we do not doubt its accuracy, we have not verified it and make no guarantee, warranty or representation about it. It is your responsibility to independently confirm its accuracy and completeness. Any projections, opinions or estimates are for example only and do not represent the current or future performance of the property. The value of this transaction to you depends on tax and other factors which should be evaluated by your tax, financial and legal advisors. You and your advisors should conduct a careful, independent investigation of the property to determine the suitability of the property for your needs.