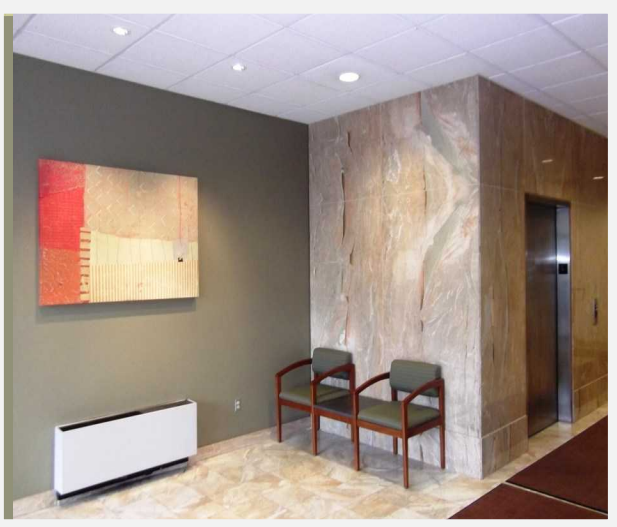


# Quality Capital Hill Office Space - For Lease

*"Well located Capital Hill office building with on-site parking."*



## *THE JEFFERSON BUILDING AT 14TH AND E. JEFFERSON ST.*

*2,062 RSF AVAILABLE ON THE 1ST FLOOR*

- Space is located on the front corner of the Building.
- 7 exterior offices, conference rm. and work stations
- Located close to Seattle U. & Cherry Hill Swedish.
- Security Entrance Control System & video cameras.
- All floors including garage served by 2 elevators.

## MaKensay

Real Estate Services Inc.

*Frank R. Buchanan*

206-623-9300

*frank@makensay.com*

[www.makensay.com](http://www.makensay.com)

 **MaKensay**  
REAL ESTATE SERVICES INC.

The information contained herein has been provided by the owner or obtained from sources we deem reliable, but all tenants and purchasers should fully investigate all relevant information before entering into a lease or a purchase of the building.