



SAFECO PLAZA

1001 FOURTH AVENUE, SEATTLE, WA

BRODERICK
• GROUP •

bxp

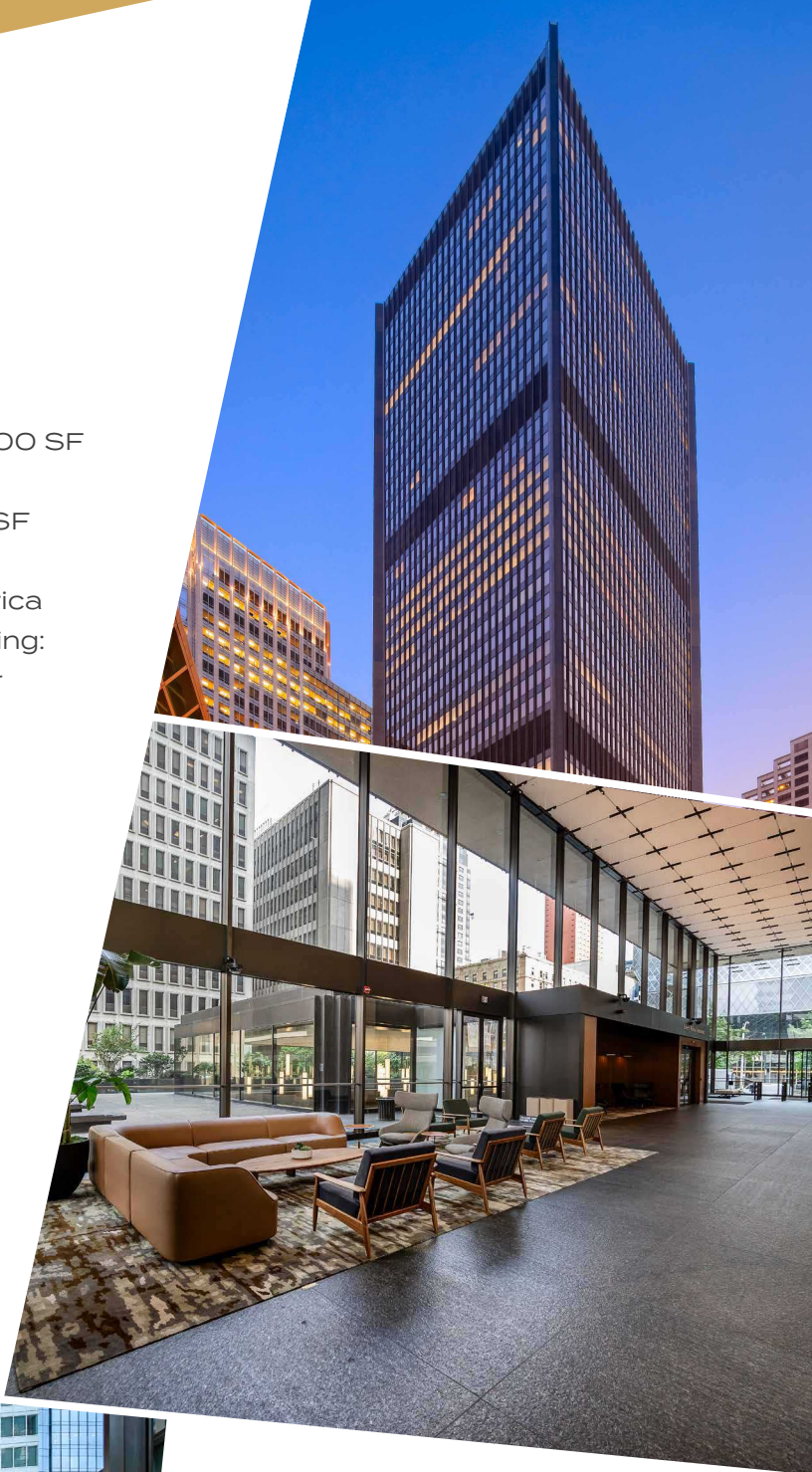


AT A GLANCE

- 762,631 SF Class A office building
- Average floor plate size is approximately 20,000 SF
- 50 story office building
- 5 levels of underground parking – 0.7:1,000 RSF parking ratio
- Iconic Grounds coffee shop and Bank of America
- 35,000 SF of building specific amenities including:
 - Large conference room and training center
 - Executive boardroom
 - Private client library
 - Fitness Club with showers and locker rooms
 - Secured Bike Hub with dedicated entrance with shower and locker rooms



BUILDING CERTIFIED



NEW TURNSTILES

Safeco Plaza's new turnstile system offers secure, touchless access with sleek design and Apple Wallet integration—allowing clients to enter using iPhones or Apple Watches, no physical badge needed.

ICONIC GROUNDS

Newly opened, Iconic Grounds Coffee brings fresh energy to Safeco Plaza with locally crafted espresso, gourmet snacks, and global flavors—all in a sleek, modern setting at the heart of downtown Seattle.



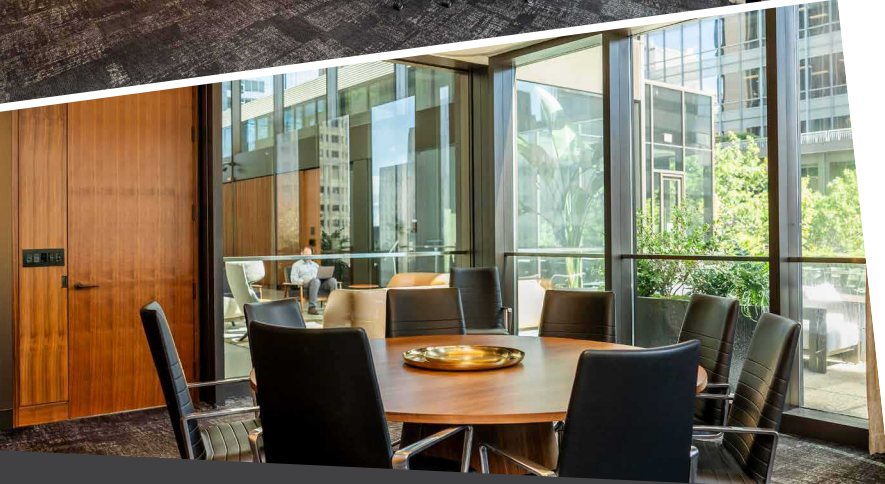
CONFERENCE CENTER

Safeco Plaza offers versatile conference rooms for meetings, presentations, and events, with full AV support and capacity for up to 120 guests



EXECUTIVE BOARDROOM

Safeco Plaza's executive boardroom offers a refined, professional setting ideal for high-level meetings and strategic discussions. It's part of the building's full-service conference center and premium amenities.



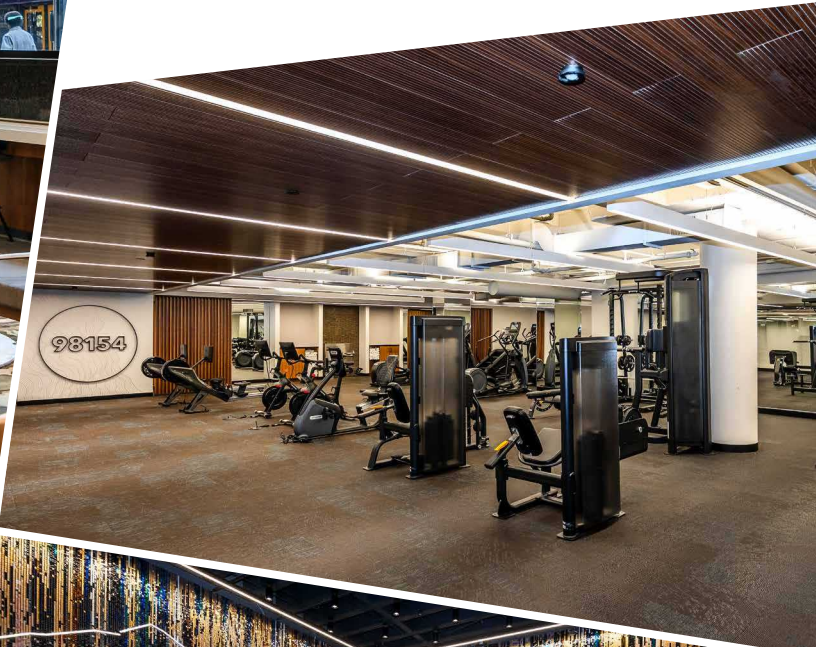
LIBRARY

The private client library at Safeco Plaza provides a quiet, focused environment perfect for individual work or confidential consultations, complementing the building's upscale offerings.



THIRD AVE LOBBY

The Third Avenue lobby at Safeco Plaza offers a sleek, modern entrance with touchless turnstiles and a spacious design—setting the tone for a premium office experience.



FITNESS CLUB

The state-of-the-art fitness club at Safeco Plaza offers top-tier equipment, dedicated studio space, and modern locker rooms, providing clients with a convenient and energizing wellness experience just steps from their office.

BIKE HUB

Safeco Plaza's Bike Hub offers secure storage, repair stations, and easy access to downtown bike lanes, ensuring a seamless cycling experience for clients.



LOCKER ROOMS

Modern locker rooms with private showers, spacious changing areas, and secure storage provide comfort and convenience for busy professionals.

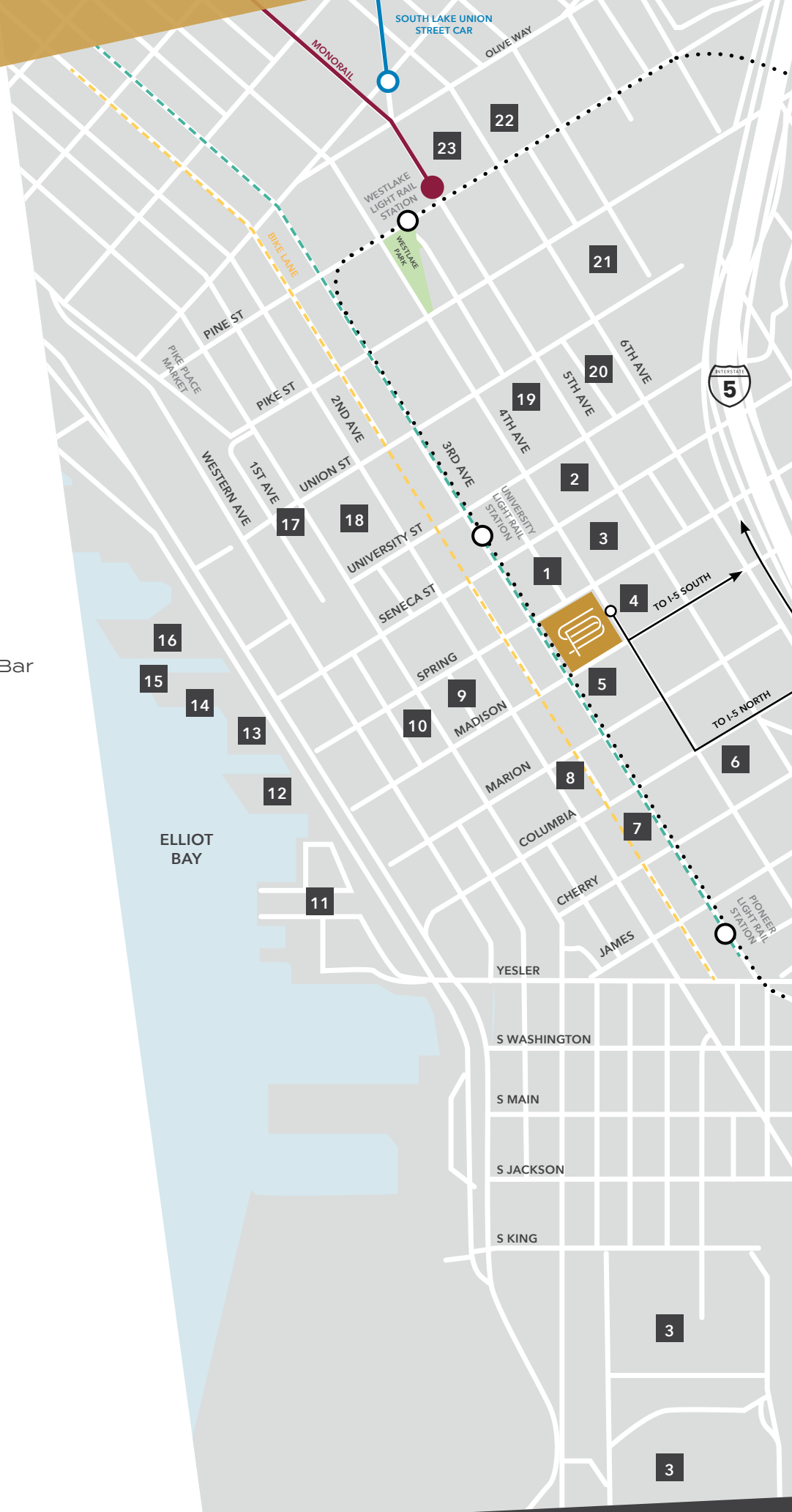




NEARBY AMENITIES

1. Columbia Food
2. W Living Room
3. Seattle Public Library
4. Vault Cafe
5. Market Fresh
6. Monorail Espresso
Columbia Tower Club
Jimmy John's
Juicy Cafe
Evergreens
7. Pegasus Coffee Bar
8. Metropolitan Grill
9. All Water Seafood & Oyster Bar
10. Storyville Coffee
Bookstore Bar & Cafe
11. Seattle Ferry Terminal
12. Ivar's
Great State Burger
13. Starbucks
14. Elliott's Oyster House
Wing Dome
15. The Seattle Great Wheel
The Crab Pot
16. Seattle Aquarium
17. Pike Place Market
18. Seattle Art Museum
19. Mendocino Farms
The Fonte Bar
Fogo de Chao
20. Museum of Illusions
Washington Athletic Club
21. Seattle Convention Center
22. Pacific Place
23. Nordstrom

- Bike Lane
- Link Light Rail
- Bus Lane
- Monorail
- SLU Street Car



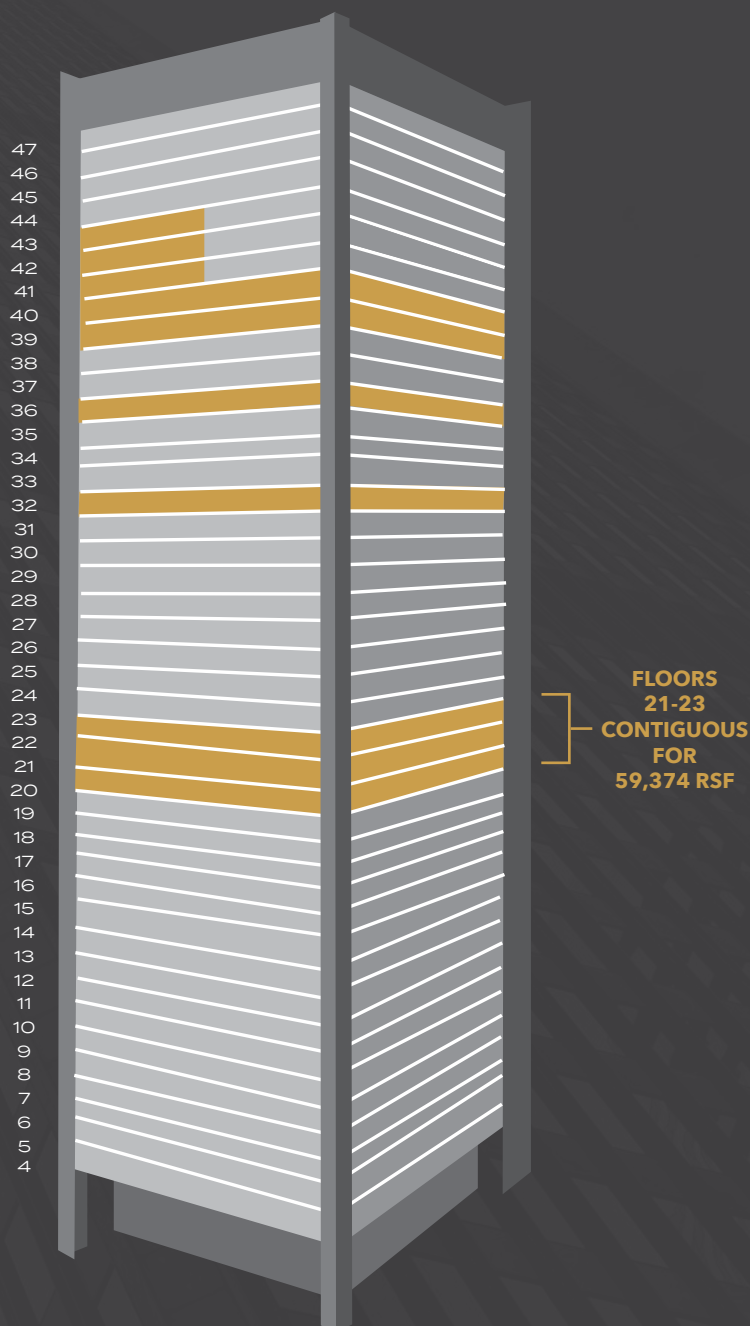


SAFECO PLAZA

1001 FOURTH AVENUE, SEATTLE, WA

BUILDING AVAILABILITY

TOUR	FLOOR	SUITE	RSF	AVAILABLE
	<u>43</u>	4368	4,400	NOW
	<u>43</u>	4360	1,789	NOW
	<u>43</u>	4322	1,309	3/1/2026
	<u>43</u>	4305	3,721	NOW
	<u>42</u>	4230	4,646	NOW
	<u>42</u>	4220	3,448	NOW
	<u>41</u>	4105	3,263	NOW
	<u>41</u>	4130	1,757	1/1/2026
	<u>40</u>	4000	20,333	NOW
	<u>39</u>	3900	20,333	NOW
	<u>36</u>	3600	20,816	NOW
	<u>32</u>	3200	19,795	NOW
	<u>23</u>	2300	19,790	NOW
	<u>22</u>	2200	19,795	NOW
	<u>21</u>	2100	19,789	NOW



The information contained herein has been given to us by the owner or sources that we deem reliable. We have no reason to doubt its accuracy, but we do not guarantee it. Prospective tenants should carefully verify all information contained herein.



DAVID GREENWOOD

206.838.7635

greenwood@broderickgroup.com

DAMON MCCARTNEY

206.838.7633

mccartney@broderickgroup.com

LARRY ALMELEH

206.910.0859

almeleh@broderickgroup.com



SAFECO PLAZA

1001 FOURTH AVENUE, SEATTLE, WA

FLOOR 43 | AVAILABLE NOW

SUITE 4305

3,721 RSF

AVAILABLE NOW

FURNITURE INCLUDED

[VIEW VIRTUAL TOUR](#)

SUITE 4322

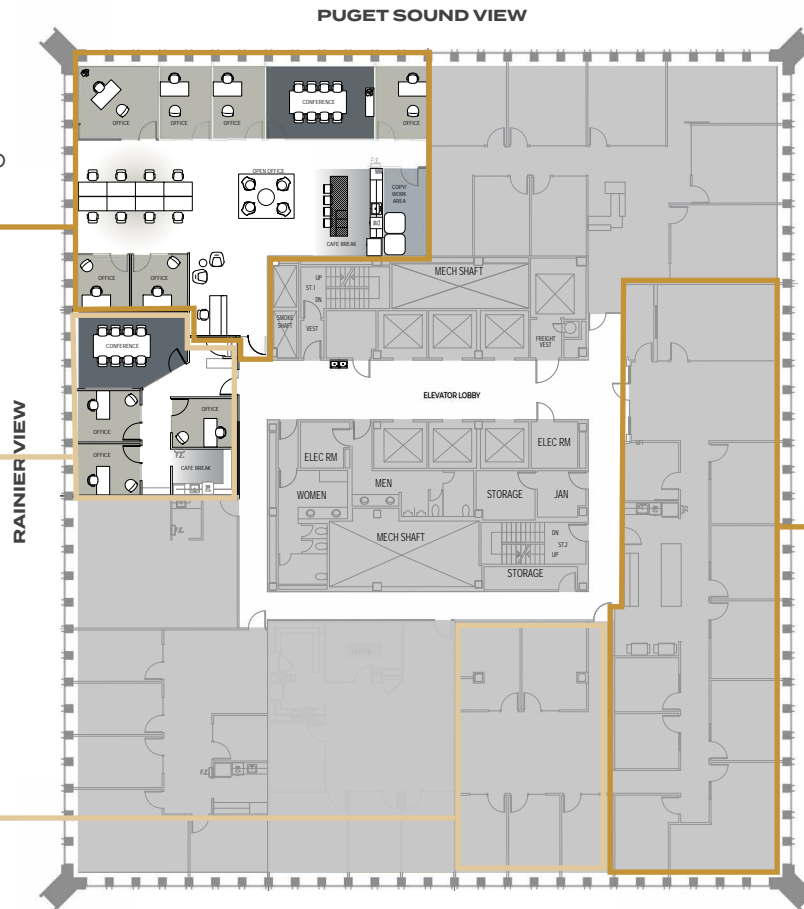
1,309 RSF

AVAILABLE 3/1/2026

SUITE 4360

1,879 RSF

AVAILABLE NOW



SUITE 4368

4,400 RSF

AVAILABLE NOW



RETURN TO
AVAILABLE
SPACE



DAVID GREENWOOD

206.838.7635

greenwood@broderickgroup.com

DAMON MCCARTNEY

206.838.7633

mccartney@broderickgroup.com

LARRY ALMELEH

206.910.0859

almeleh@broderickgroup.com

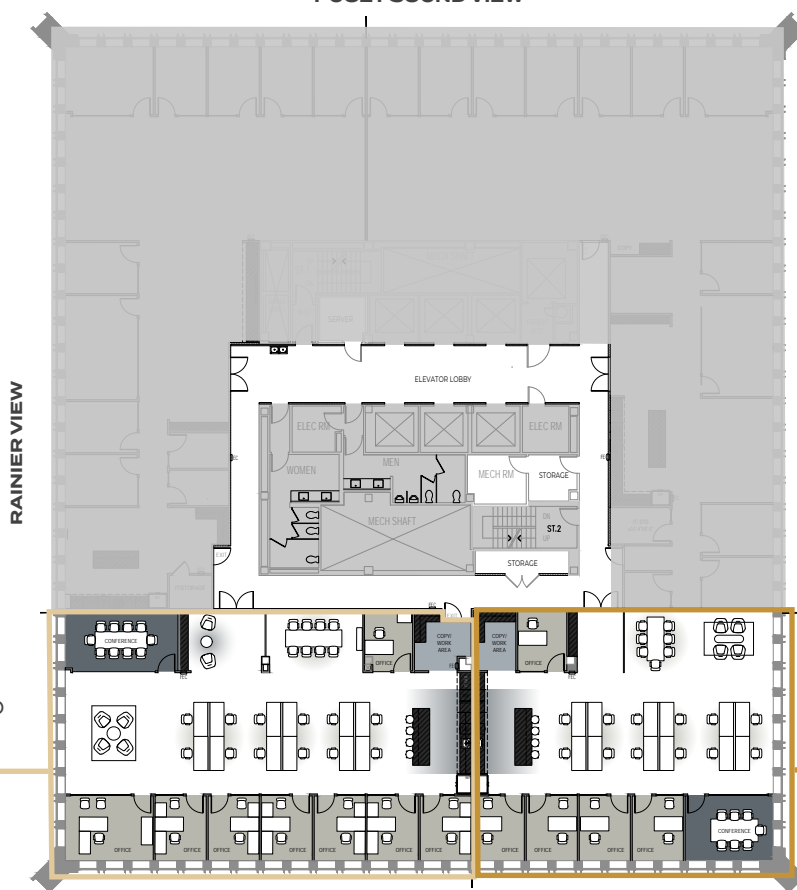


SAFECO PLAZA

1001 FOURTH AVENUE, SEATTLE, WA

FLOOR 42 | PRE-BUILT

PUGET SOUND VIEW



SUITE 4230

4,646 RSF

AVAILABLE NOW

FURNITURE INCLUDED

[VIEW VIRTUAL TOUR](#)

SUITE 4220

3,448 RSF

AVAILABLE NOW

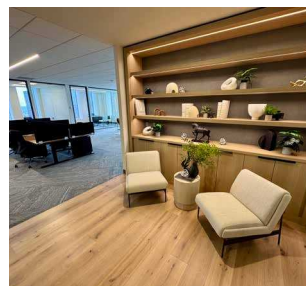
FURNITURE INCLUDED

[VIEW VIRTUAL TOUR](#)

SUITE 4220



SUITE 4230



RETURN TO
AVAILABLE
SPACE



DAVID GREENWOOD

206.838.7635

greenwood@broderickgroup.com

DAMON MCCARTNEY

206.838.7633

mccartney@broderickgroup.com

LARRY ALMELEH

206.910.0859

almeleh@broderickgroup.com



SAFECO PLAZA

1001 FOURTH AVENUE, SEATTLE, WA

FLOOR 41 | AVAILABLE NOW

PUGET SOUND VIEW



SUITE 4105

3,263 RSF

AVAILABLE NOW

FURNITURE INCLUDED

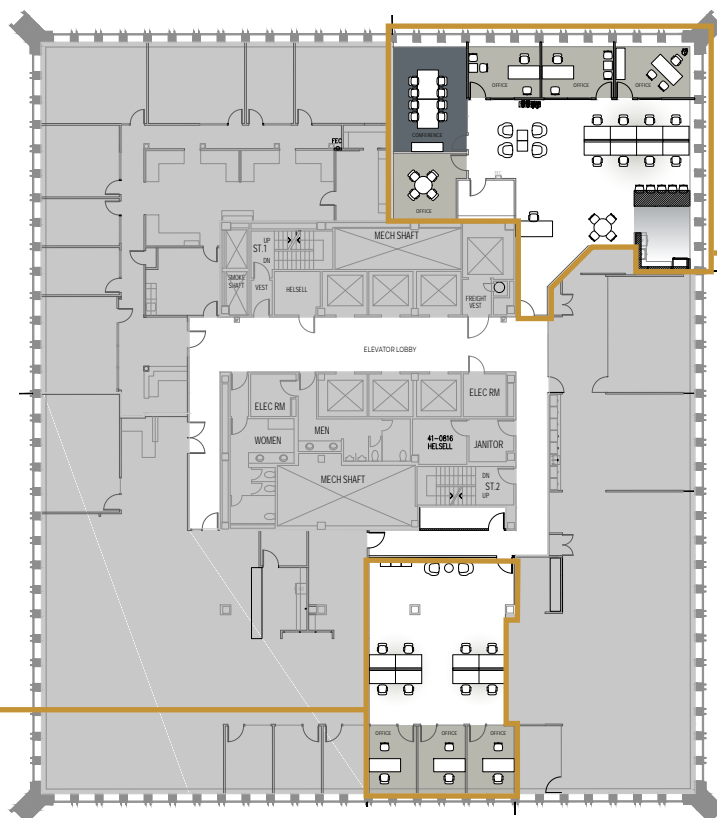
[VIEW VIRTUAL TOUR](#)

RAINIER VIEW

SUITE 4130

1,757 RSF

AVAILABLE 1/1/2026



SUITE 4105



SUITE 4105



RETURN TO
AVAILABLE
SPACE



DAVID GREENWOOD

206.838.7635

greenwood@broderickgroup.com

DAMON MCCARTNEY

206.838.7633

mccartney@broderickgroup.com

LARRY ALMELEH

206.910.0859

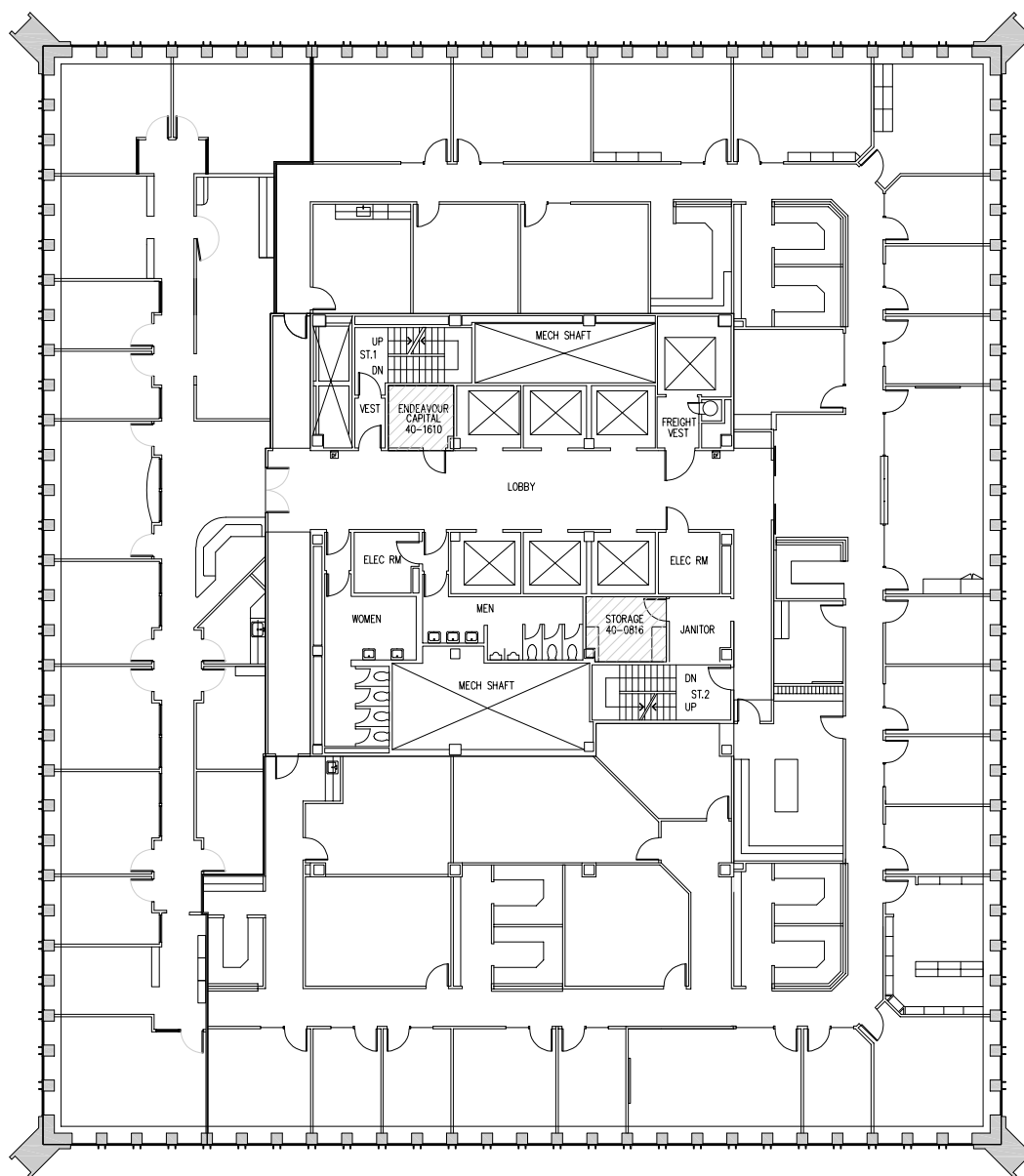
almeleh@broderickgroup.com



SAFECO PLAZA

1001 FOURTH AVENUE, SEATTLE, WA

FLOOR 40 | 20,333 RSF | AVAILABLE NOW



DAVID GREENWOOD

206.838.7635

greenwood@broderickgroup.com

DAMON MCCARTNEY

206.838.7633

mccartney@broderickgroup.com

LARRY ALMELEH

206.910.0859

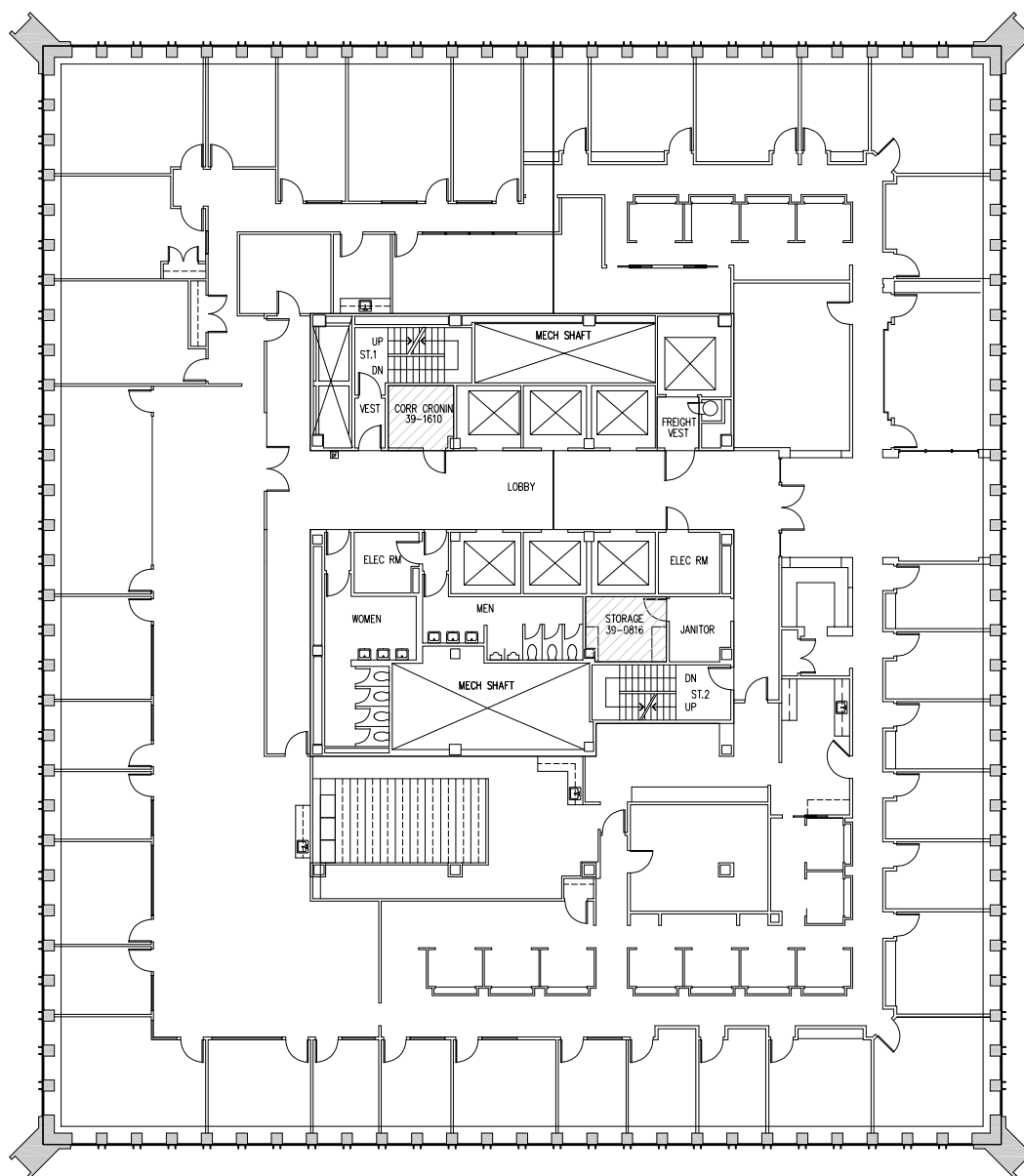
almeleh@broderickgroup.com



SAFECO PLAZA

1001 FOURTH AVENUE, SEATTLE, WA

FLOOR 39 | 20,333 RSF | AVAILABLE NOW



↑
RETURN TO
AVAILABLE
SPACE



DAVID GREENWOOD

206.838.7635

greenwood@broderickgroup.com

DAMON MCCARTNEY

206.838.7633

mccartney@broderickgroup.com

LARRY ALMELEH

206.910.0859

almeleh@broderickgroup.com

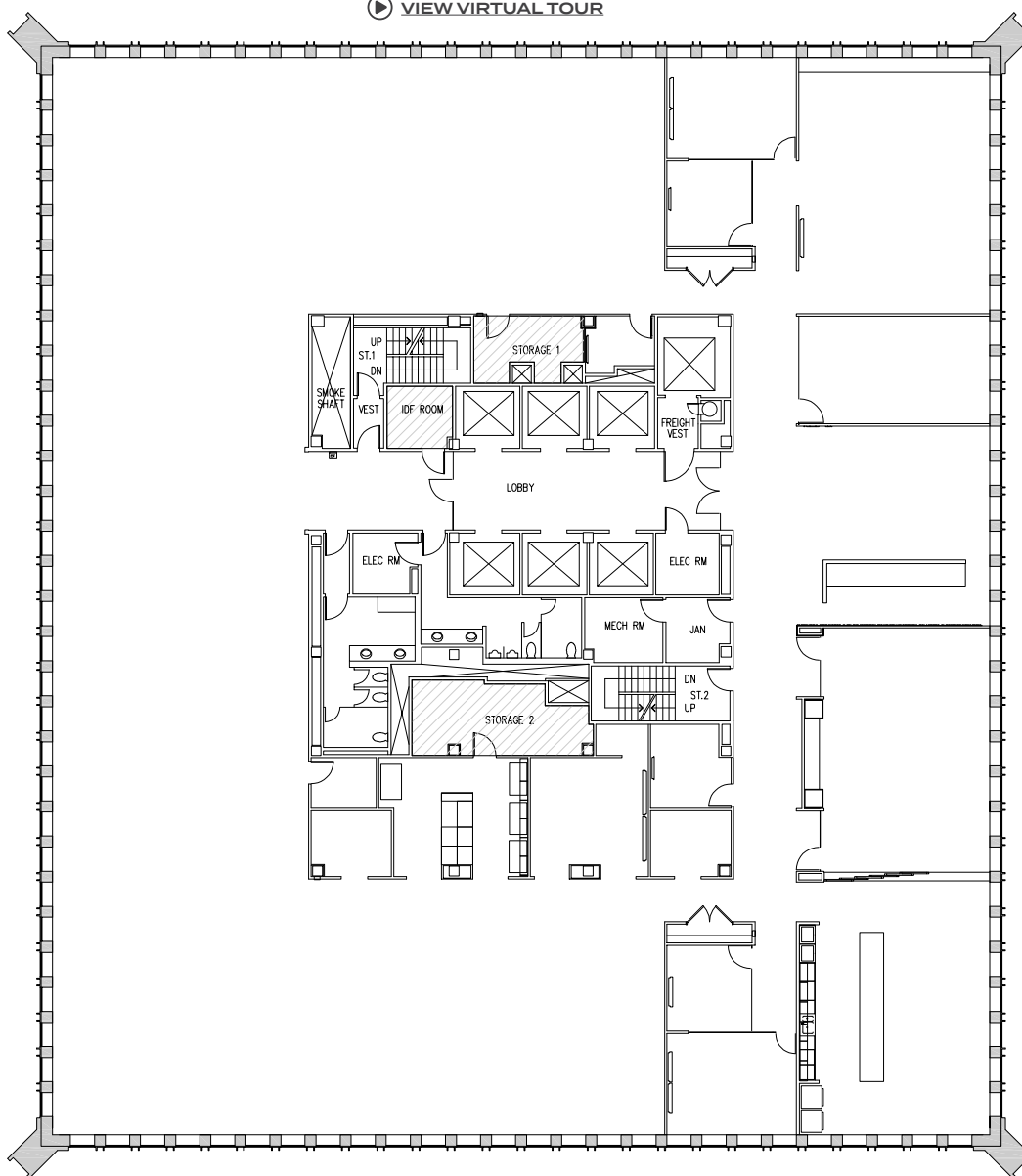


SAFECO PLAZA

1001 FOURTH AVENUE, SEATTLE, WA

FLOOR 36 | 20,816 RSF | AVAILABLE NOW

[▶ VIEW VIRTUAL TOUR](#)



↑
RETURN TO
AVAILABLE
SPACE



DAVID GREENWOOD
206.838.7635
greenwood@broderickgroup.com

DAMON MCCARTNEY
206.838.7633
mccartney@broderickgroup.com

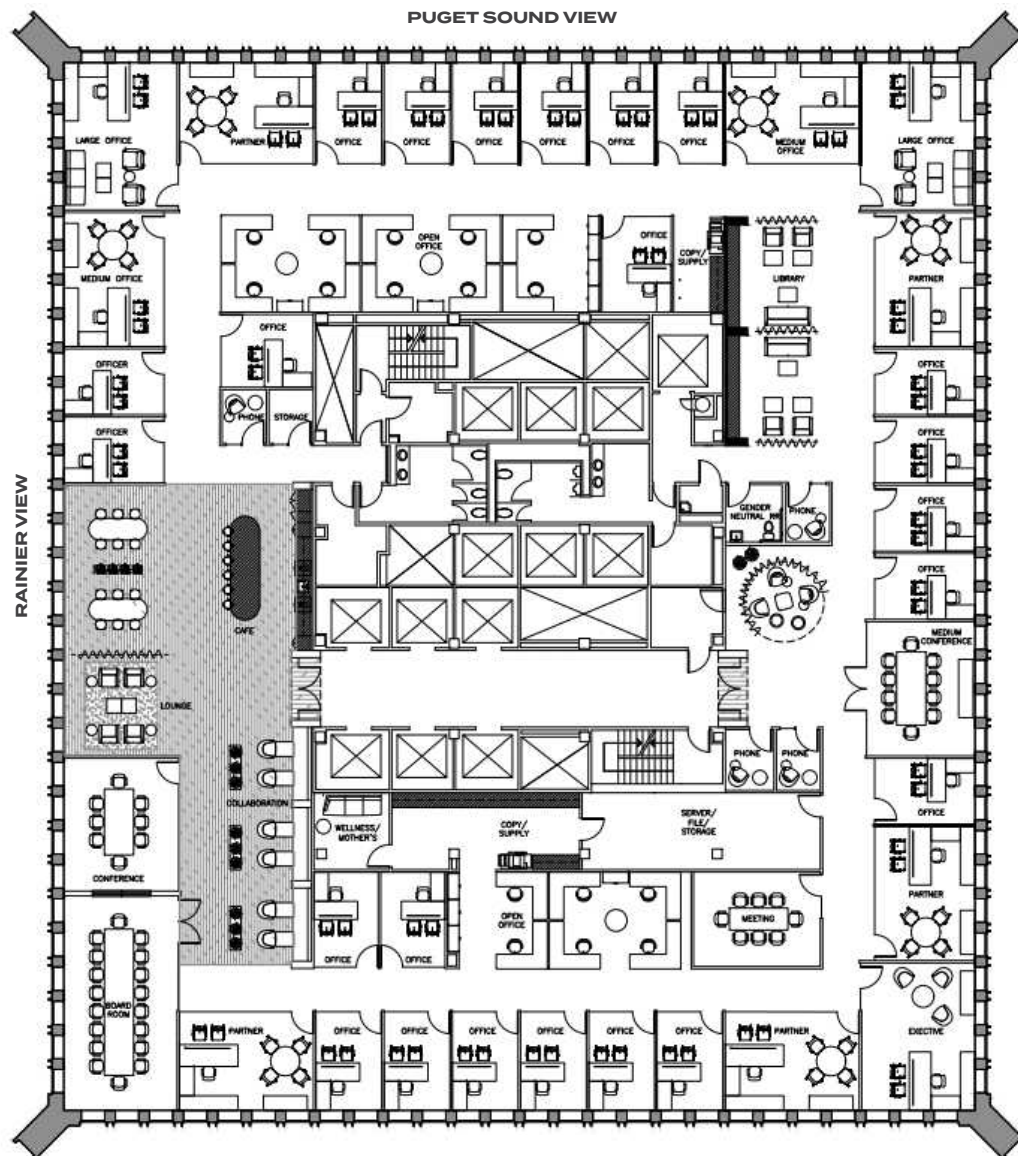
LARRY ALMELEH
206.910.0859
almeleh@broderickgroup.com



SAFECO PLAZA

1001 FOURTH AVENUE, SEATTLE, WA

FLOOR 32 | 19,795 RSF | AVAILABLE NOW



RETURN TO
AVAILABLE
SPACE

*EXAMPLE FLOORPLAN: CURRENTLY COLD SHELL

[VIEW VIRTUAL TOUR](#)



DAVID GREENWOOD

206.838.7635

greenwood@broderickgroup.com

DAMON MCCARTNEY

206.838.7633

mccartney@broderickgroup.com

LARRY ALMELEH

206.910.0859

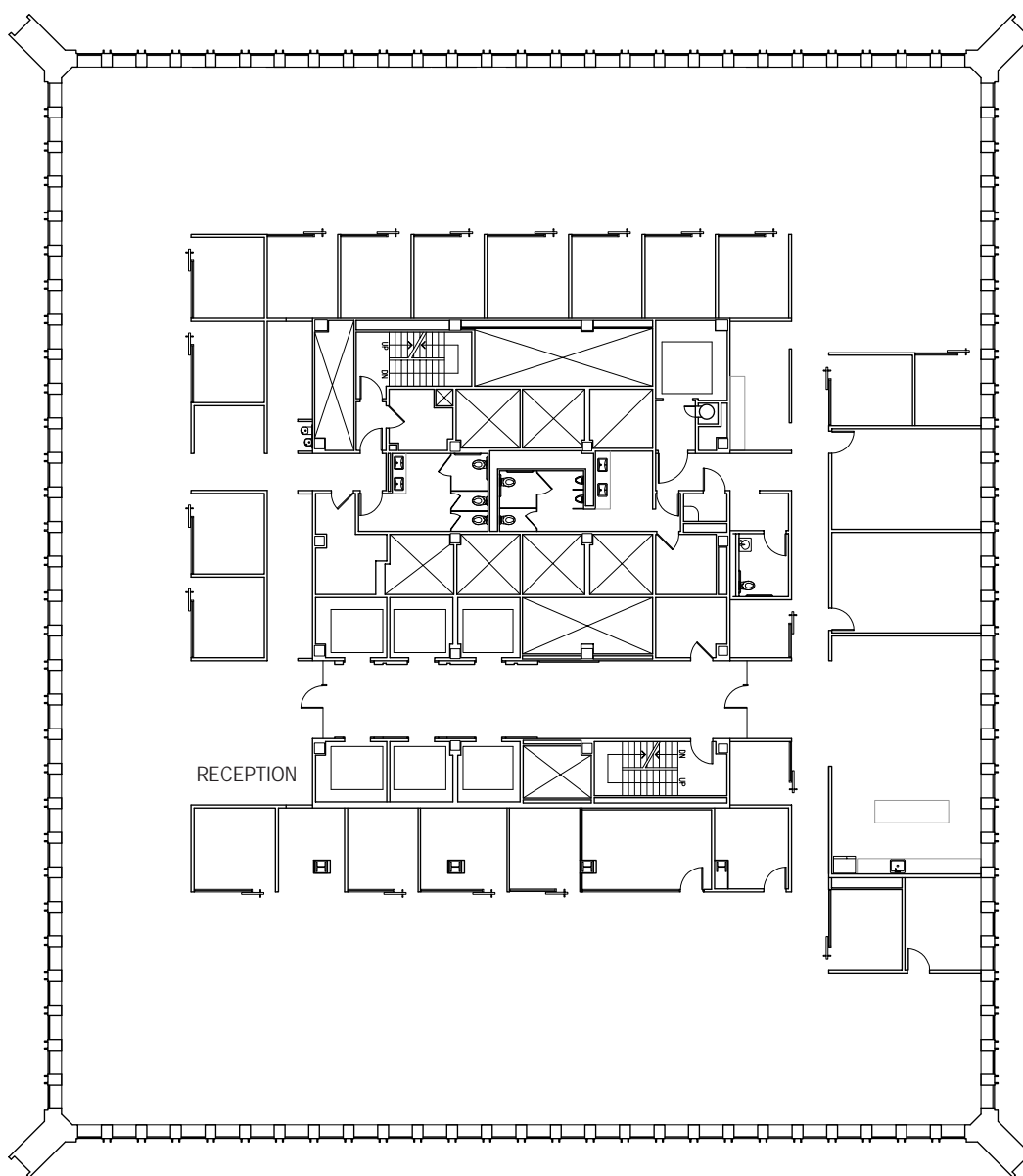
almeleh@broderickgroup.com



SAFECO PLAZA

1001 FOURTH AVENUE, SEATTLE, WA

FLOOR 23 | 19,790 RSF | AVAILABLE NOW



RETURN TO
AVAILABLE
SPACE

 [VIEW VIRTUAL TOUR](#)



DAVID GREENWOOD

206.838.7635

greenwood@broderickgroup.com

DAMON MCCARTNEY

206.838.7633

mccartney@broderickgroup.com

LARRY ALMELEH

206.910.0859

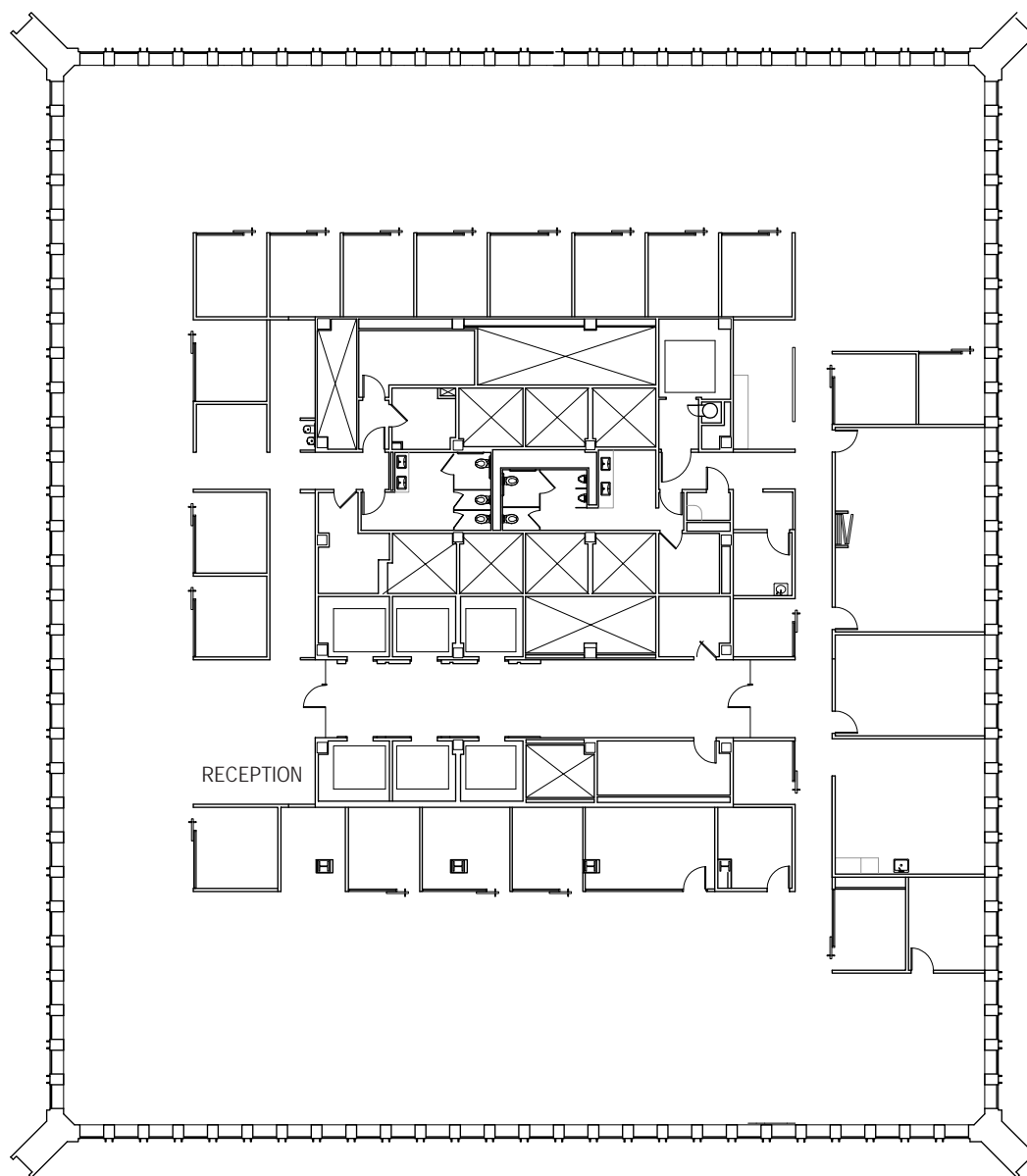
almeleh@broderickgroup.com



SAFECO PLAZA

1001 FOURTH AVENUE, SEATTLE, WA

FLOOR 22 | 19,795 RSF | AVAILABLE NOW



↑
RETURN TO
AVAILABLE
SPACE



DAVID GREENWOOD

206.838.7635

greenwood@broderickgroup.com

DAMON MCCARTNEY

206.838.7633

mccartney@broderickgroup.com

LARRY ALMELEH

206.910.0859

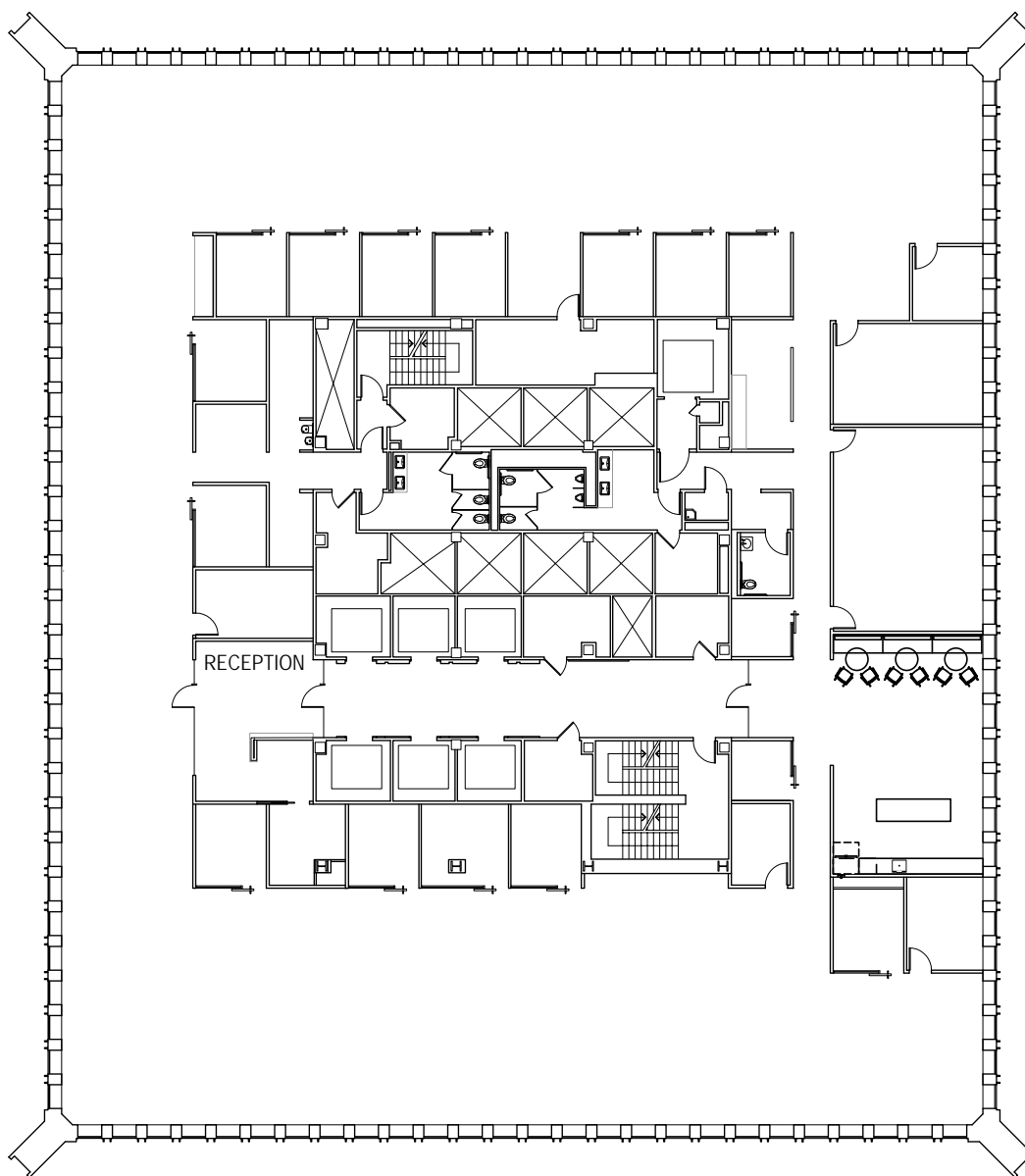
almeleh@broderickgroup.com



SAFECO PLAZA

1001 FOURTH AVENUE, SEATTLE, WA

FLOOR 21 | 19,789 RSF | AVAILABLE NOW



↑
RETURN TO
AVAILABLE
SPACE



DAVID GREENWOOD

206.838.7635

greenwood@broderickgroup.com

DAMON MCCARTNEY

206.838.7633

mccartney@broderickgroup.com

LARRY ALMELEH

206.910.0859

almeleh@broderickgroup.com



SAFECO PLAZA

1001 FOURTH AVENUE, SEATTLE, WA



DAVID GREENWOOD

206.838.7635

greenwood@broderickgroup.com

DAMON MCCARTNEY

206.838.7633

mccartney@broderickgroup.com

LARRY ALMELEH

206.910.0859

almeleh@broderickgroup.com