

TOK

COMMERCIAL

687

693

663

663 W CANFIELD

OFFICE FOR LEASE | COEUR D'ALENE, ID 83815

TWO MONTHS OF FREE RENT!

CONTACT

DANNY DAVIS, CCIM

208.691.6003

danny@tokcommercial.com

HIGHLIGHTS

- Quality stand alone building
- Excellent curb appeal
- Central location and easily accessible
- Ample parking

RATE REDUCED!

SPACE	SIZE	RATE
Building	5,688 SF	\$16.00/SF, NNN
LOT SIZE:	.64 Acres	ZONING: C-17
BLDG SIZE:	5,688 SF	LEASE TYPE: NNN
YEAR BUILT:	2006	EST. NNN: \$5.27
PARKING:	Ample	AVAILABLE: Immediately

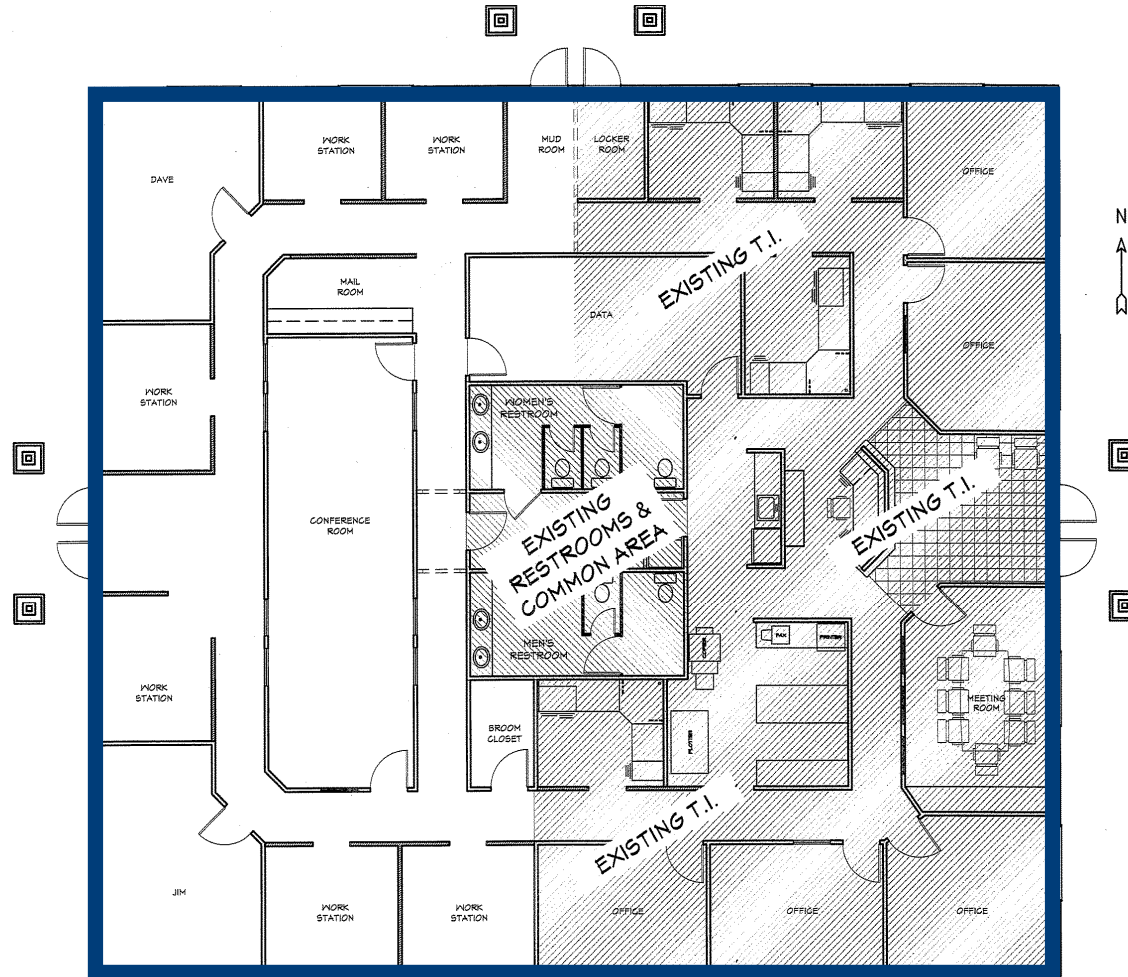
DETAILS



THIS PROPERTY IS EXCLUSIVELY MARKETING BY TOK INLAND NORTHWEST LLC DBA TOK COMMERCIAL.
This information was obtained from sources believed reliable but cannot be guaranteed. Any opinions or estimates are used for example only.

TOKCOMMERCIAL.COM

FLOOR PLAN

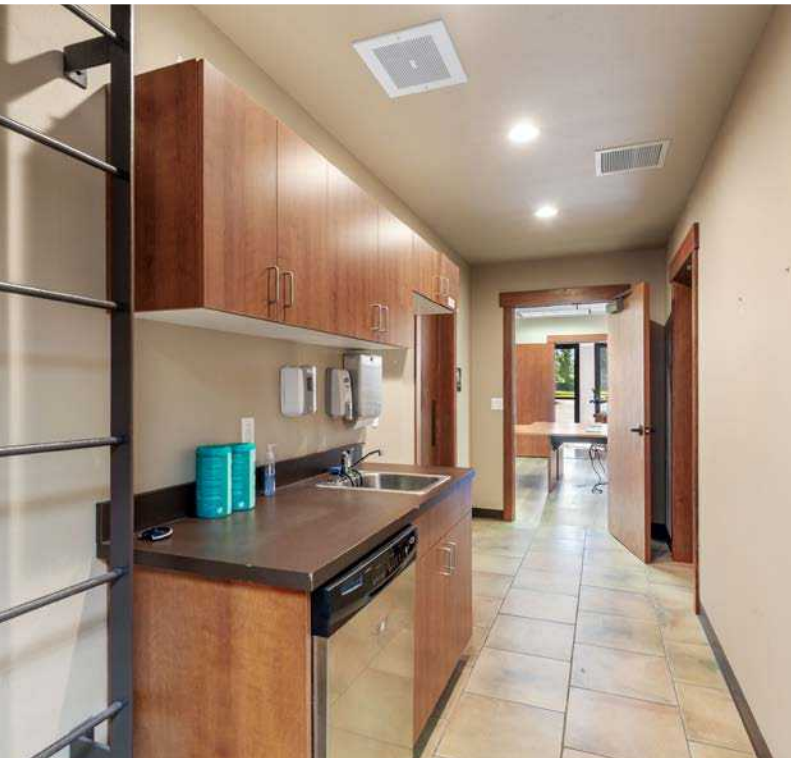


PHASE 2 PROPOSED
T.I. FLOOR PLAN
2470 SQ. FT.

EXISTING
T.I. FLOOR PLAN
2550 SQ. FT.

W CANFIELD AVE









DOWNTOWN CDA



33,403 VPD



SILVERLAKE MALL



W CANFIELD AVE

SITE

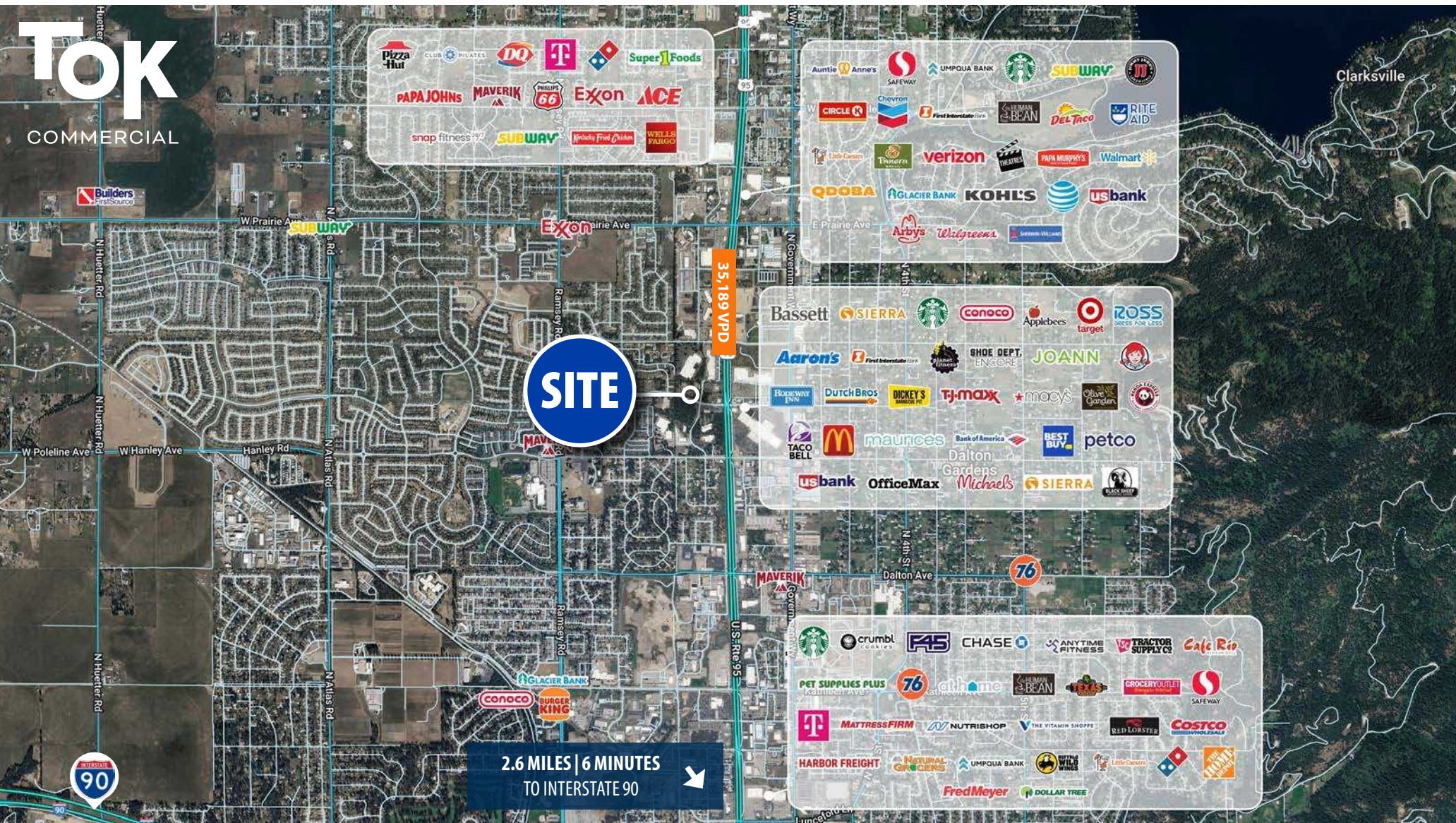
W CANFIELD AVE



Tok
COMMERCIAL



AERIAL MAP SURROUNDED BY AMENITIES



POPULATION
8,267
1 MI. RADIUS



HISTORIC ANN. GROWTH
3.0%
1 MI. RADIUS



AVG. HOUSEHOLD INC.
\$109,516
1 MI. RADIUS



POPULATION
61,397
3 MI. RADIUS



HISTORIC ANN. GROWTH
2.3%
3 MI. RADIUS



AVG. HOUSEHOLD INC.
\$98,854
3 MI. RADIUS



POPULATION
96,499
5 MI. RADIUS



HISTORIC ANN. GROWTH
2.2%
5 MI. RADIUS



AVG. HOUSEHOLD INC.
\$104,308
5 MI. RADIUS