



1555 NW Market Street

Seattle, WA 98107

PROPERTY HIGHLIGHTS

- + \$33/SF + NNN (\$7.28/SF)
- + 800 SF
- + Prime Downtown Ballard Retail
- + Turn-Key Food Use
- + Available Now
- + Sublease term through August 31, 2029

MATT LE
Associate
+1 425 586 5647
mle@nai-psp.com

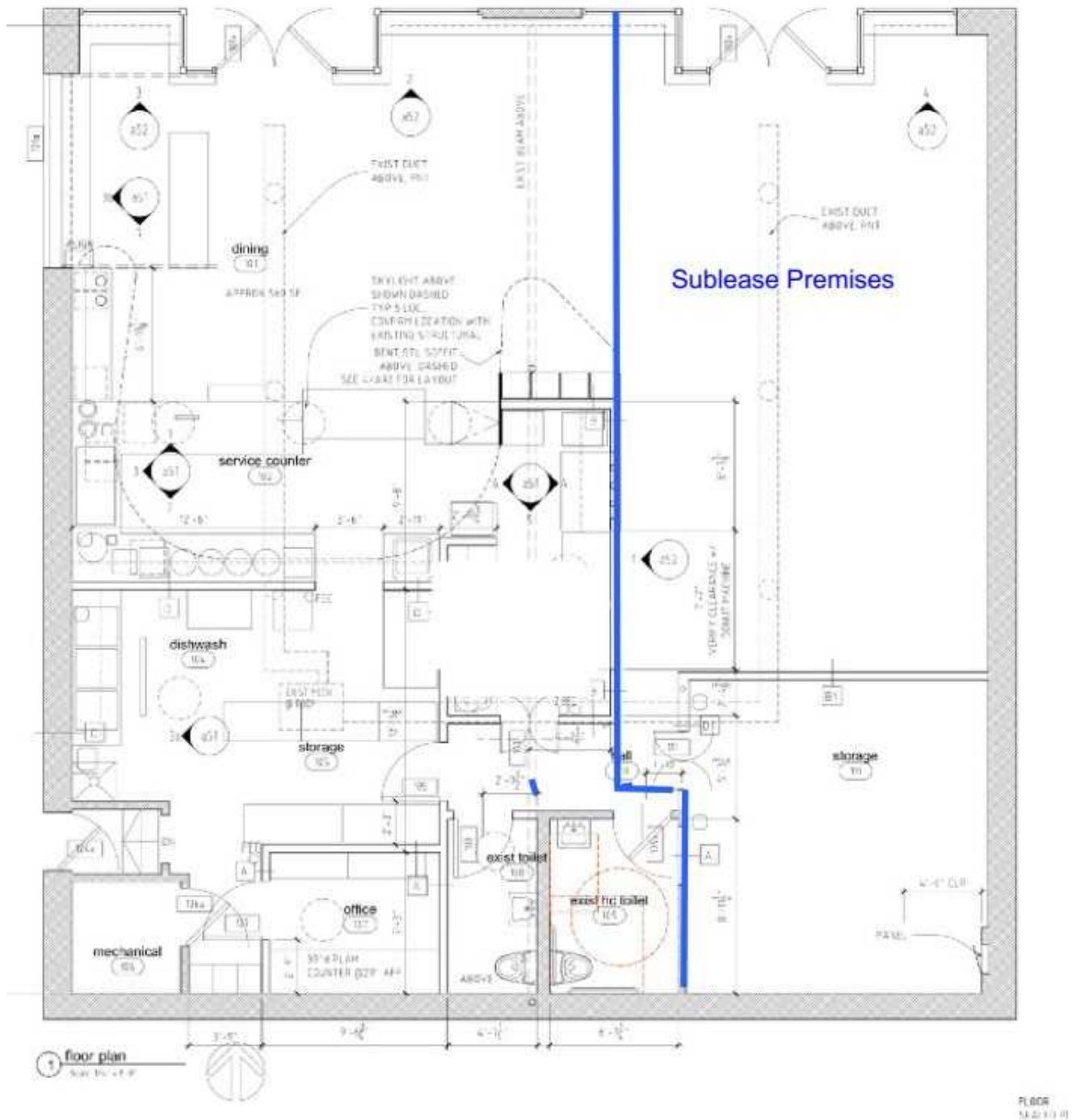
BARBARA JACOBSON
The Jacobson Group
+1 206 890 9333
barbara@thejacobsongroup.net



THE INFORMATION CONTAINED HEREIN HAS BEEN GIVEN TO US BY THE OWNER OF THE PROPERTY OR OTHER SOURCES WE DEEM RELIABLE. WE HAVE NO REASON TO DOUBT ITS ACCURACY, BUT WE DO NOT GUARANTEE IT. ALL INFORMATION SHOULD BE VERIFIED PRIOR TO PURCHASE OR LEASE.



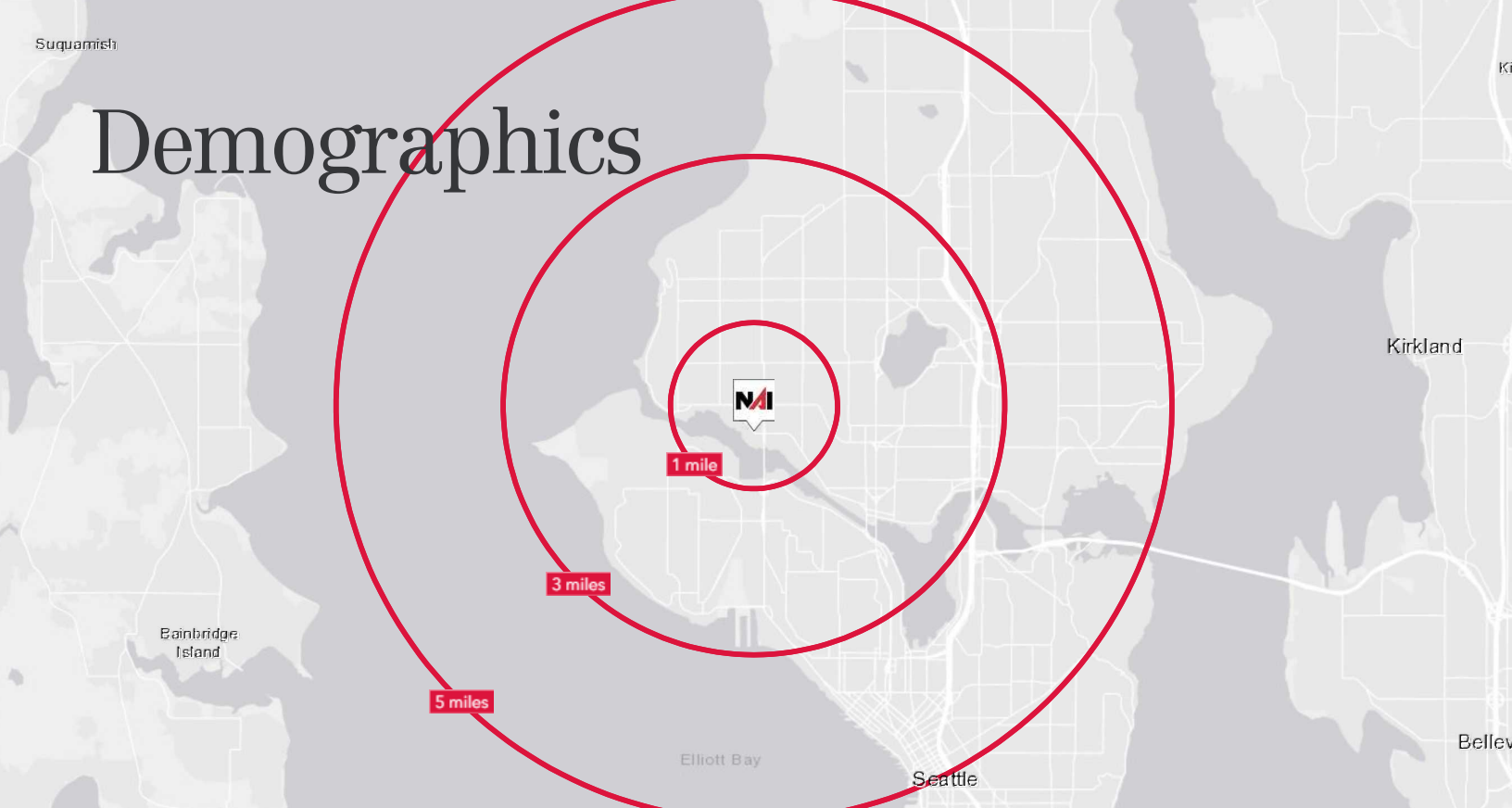
Floor Plan



MATT LE
Associate
+1 425 586 5647
mle@nai-psp.com

BARBARA JACOBSON
The Jacobson Group
+1 206 890 9333
barbara@thejacobsongroup.net

Demographics



1555 NW MARKET STREET

	1 MILE	3 MILES	5 MILES
Population	34,830	207,658	458,561
2029 Population	37,285	224,106	507,667
Businesses	2,219	8,664	24,470
Households	18,058	98,669	227,187
Median Age	35.4	35.0	34.3
Median HH Income	\$141,842	\$138,353	\$128,680

MATT LE

Associate
+1 425 586 5647
mle@nai-psp.com

BARBARA JACOBSON

The Jacobson Group
+1 206 890 9333
barbara@thejacobsongroup.net

