

1501 & 1521 1ST AVENUE S | SEATTLE, WA 98134

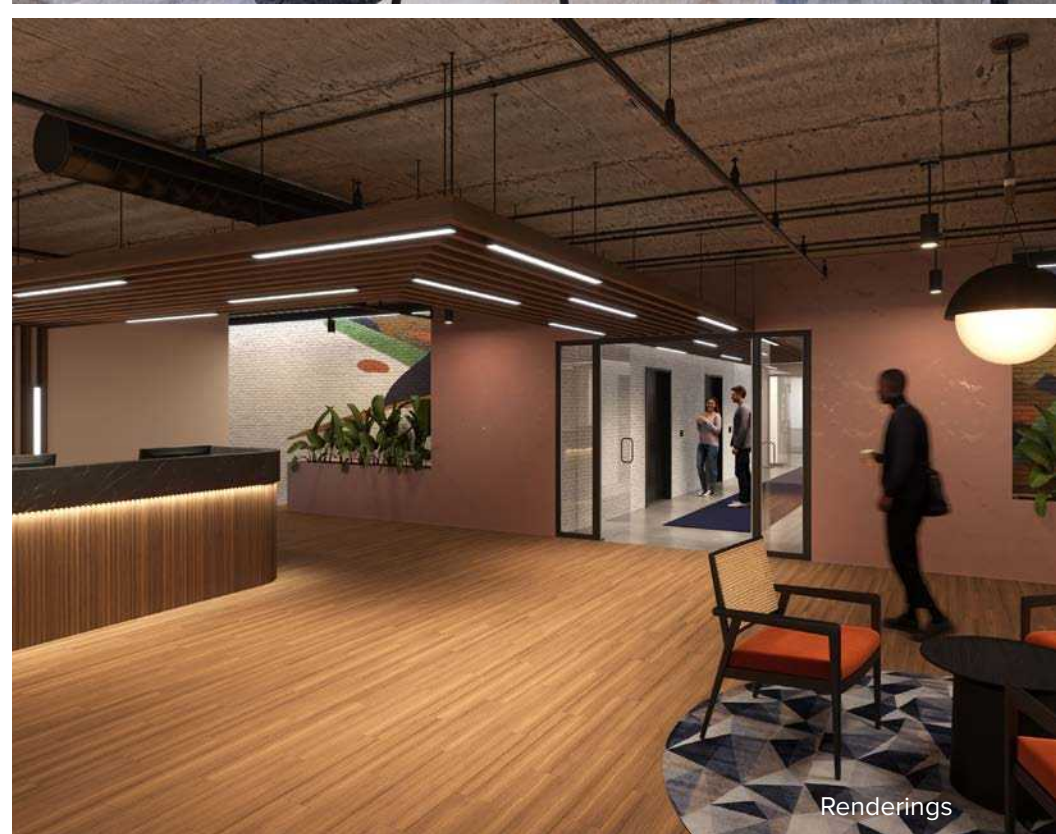


HOME PLATE CENTER

CBRE



1501 & 1521 1ST AVENUE S | SEATTLE, WA 98134



Renderings



BUILDING HIGHLIGHTS

- + Two-building, Class A office campus
- + Generous parking ratio of 1.5/1,000 RSF
- + Building signage available
- + High ceilings with full-floor windows
- + Impressive views of Elliott Bay, Mount Rainier and city skyline
- + Efficient large floor plates
- + Fully wired building conference room
- + Fitness center, bicycle storage, showers and lockers
- + Great room lobby with in-floor radiant heating
- + On Safari Espresso Bar and Vinason Pho onsite
- + Backup generators on site with 7.9 MW's of capacity
- + LEED® Gold certified
- + Adjacent to T-Mobile Park and Lumen Field
- + Great commuter access to I-5, I-90 and SR-99
- + Excellent access to mass transit, including light rail, ferries, commuter train and bus systems via free Uber service



1501 & 1521 1ST AVENUE S | SEATTLE, WA 98134





1501 & 1521 1ST AVENUE S | SEATTLE, WA 98134

HOME PLATE CENTER SOUTH

OFFICE SUITE 501

44,552 SF

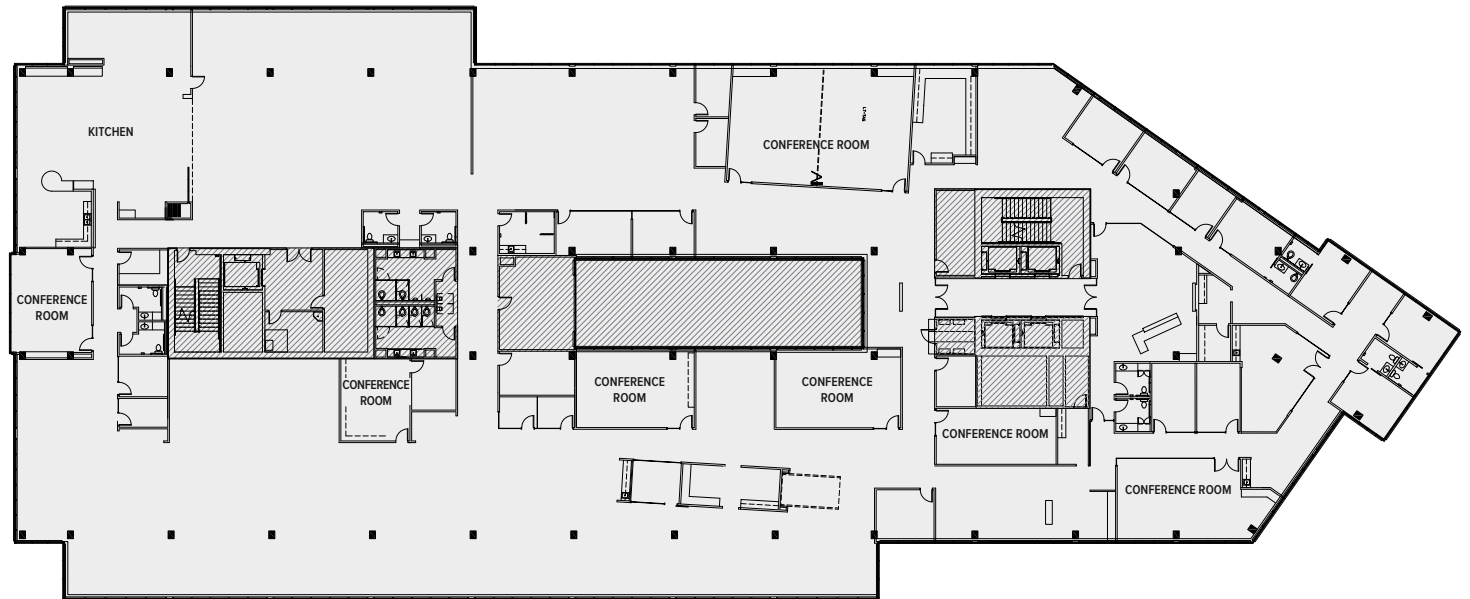
- + Available now
- + Full floor available with mix of offices, conference rooms and open space
- + High-end, Class A tech build-out
- + Large kitchen area with views of the Olympic Mountains



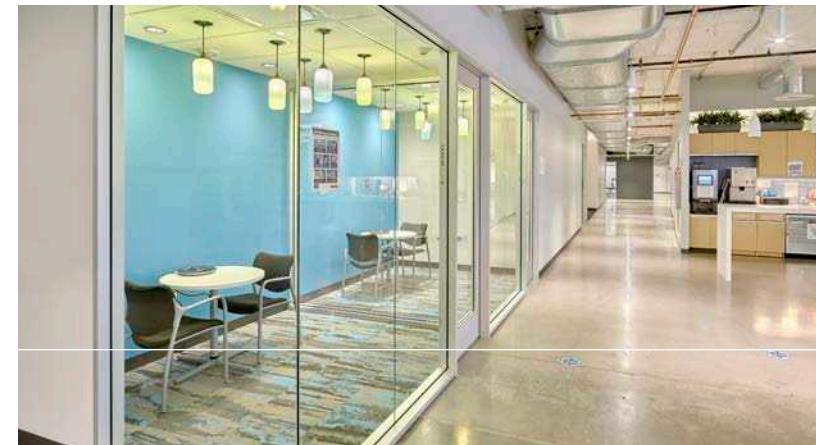
CLICK
FOR VIRTUAL TOUR

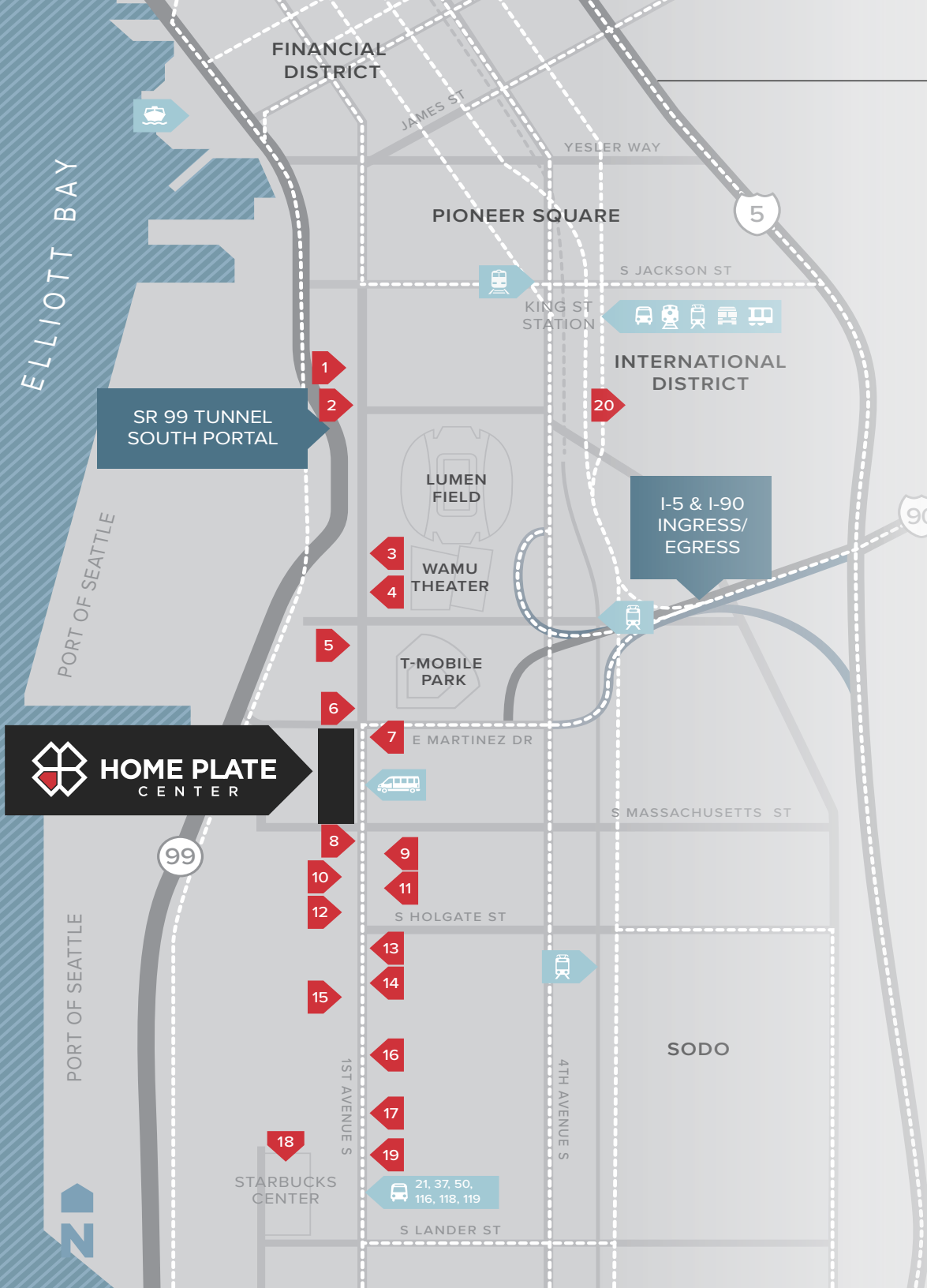


CLICK
FOR 3D TOUR



ND





NEIGHBORHOOD AMENITIES

- | | | | |
|----|---|----|--------------------|
| 1 | SLUGGERS SPORTS BAR & GRILL | 11 | PASEO |
| 2 | ELYSIAN FIELDS | 12 | BLAZING BAGELS |
| 3 | LOCKER ROOM BY LIDS | 13 | KRISPY KREME |
| 4 | JIMMY'S ON FIRST | 14 | MACRINA BAKERY |
| 5 | HATBACK BAR & GRILLE AND STEELHEADS ALLEY | 15 | JIMMY JOHN'S |
| 6 | ON SAFARI ESPRESSO BAR | 16 | STARBUCKS |
| 7 | TONY T'S SPORTS LOUNGE | 17 | PECOS PIT BARBEQUE |
| 8 | VINASON PHO | 18 | STARBUCKS |
| 9 | SHOWBOX SODO | 19 | SODO POKE & MORE |
| 10 | HOOVERVILLE BAR | 20 | UWAJIMAYA |

SCOTTA ASHCRAFT

Senior Vice President
+1 206 292 6063
scotta.ashcraft@cbre.com

DWIGHT NEWELL

Executive Vice President
+1 425 830 9041
dwight.newell@cbre.com

© 2025 CBRE, Inc. All rights reserved. This information has been obtained from sources believed reliable, but has not been verified for accuracy or completeness. You should conduct a careful, independent investigation of the property and verify all information. Any reliance on this information is solely at your own risk. CBRE and the CBRE logo are service marks of CBRE, Inc. All other marks displayed on this document are the property of their respective owners, and the use of such logos does not imply any affiliation with or endorsement of CBRE. Photos herein are the property of their respective owners. Use of these images without the express written consent of the owner is prohibited. 11.06.25 BSO