



Woodinville Corporate Park

15300–15500 & 16240–16750 Woodinville-Redmond Rd

Space Available
For Lease Within a
928,000 SF Class-A
Industrial Park



SCAN TO VIEW WEBSITE

woodinvillecorporatepark.com



**Kidder
Mathews**



12 State-of-the-Art,
Freestanding, Dock-High,
Class-A Industrial Buildings in
Woodinville's Premier Location

928,000 SF

Total Size of Park



Loading door
ratio: 1 door per
3,067 SF



24' clear height



Excellent
truck courts



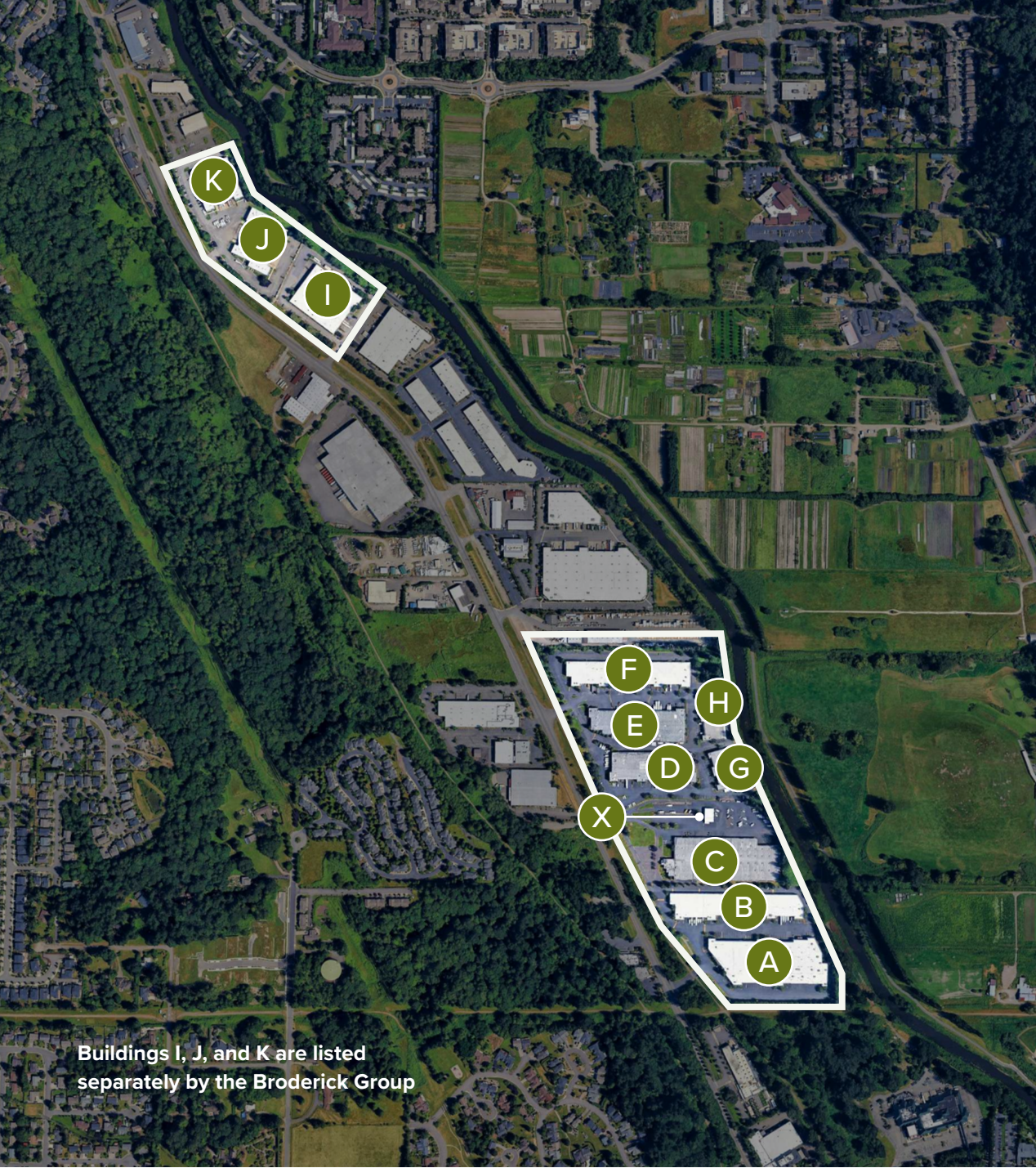
Parking ratio:
1.35 stalls per
1,000 SF



Highlights

Best-in-class industrial on the Eastside

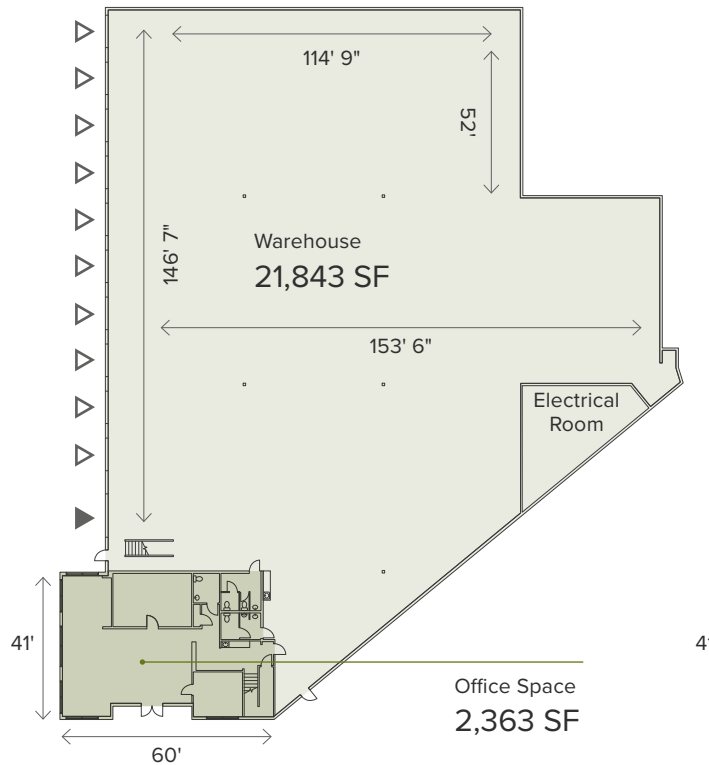
- Easy access to SR-522 & I-405
- Situated close to downtown Woodinville amenities
- Market leading functionality: true 24' clear, dock + grade loading, with excellent truck courts



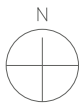
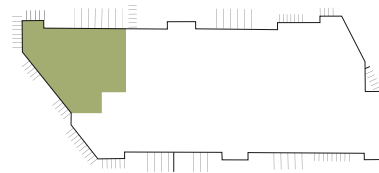
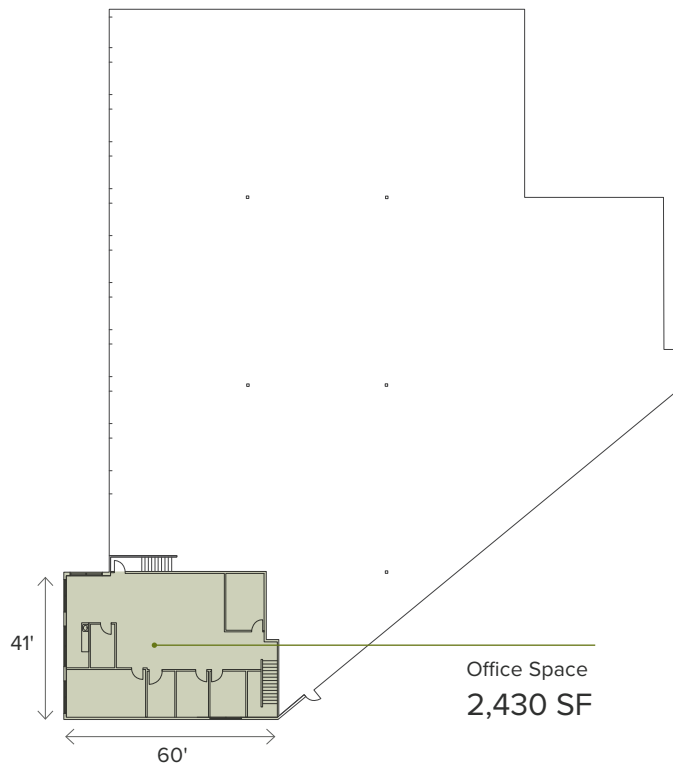
Buildings I, J, and K are listed separately by the Broderick Group

Building A Suite 100

First Floor



Mezzanine



- Office
- Warehouse
- Dock-High Loading
- Grade-Level Loading

Available 2/1/26
Call for Rates

Planned improvements

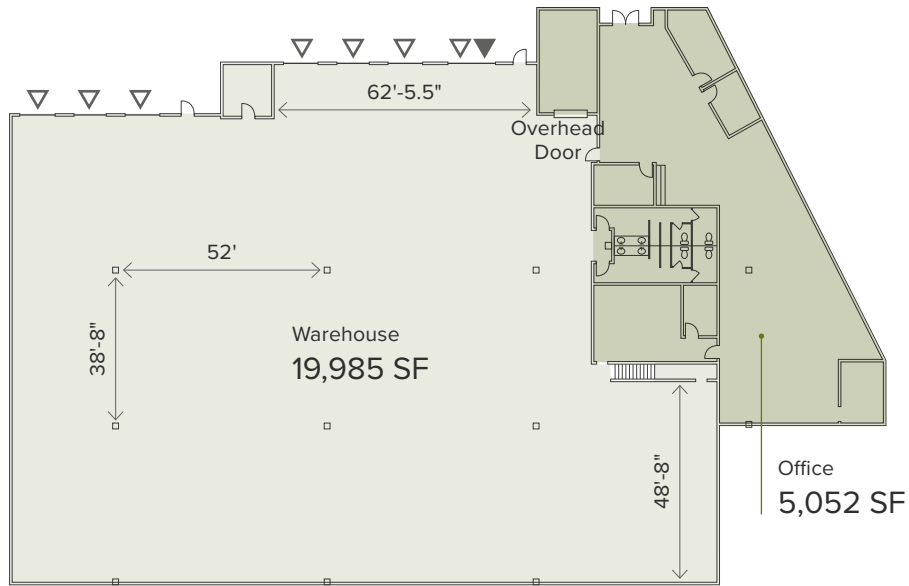
- New LED lighting
- White box warehouse
- 24' clear height
- 10 dock high, 1 oversized grade level door
- 600 amps, 480V, 3-phase power

First-Floor	2,363 SF
Second-Floor	2,430 SF
Warehouse	21,843 SF
Total Space	26,636 SF

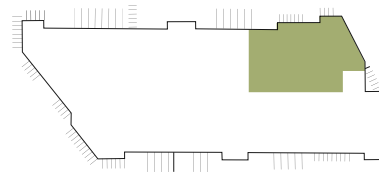
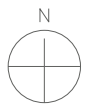
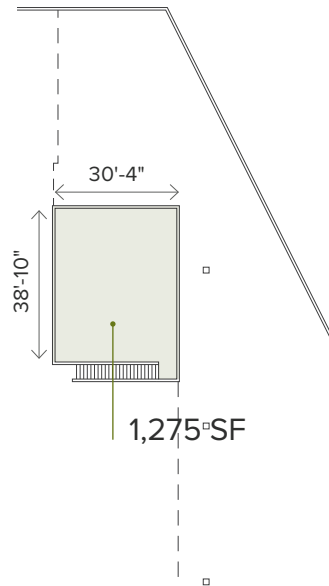


Building A Suite 900

First Floor



Mezzanine



Available 2/1/26
Call for Rates

Planned improvements

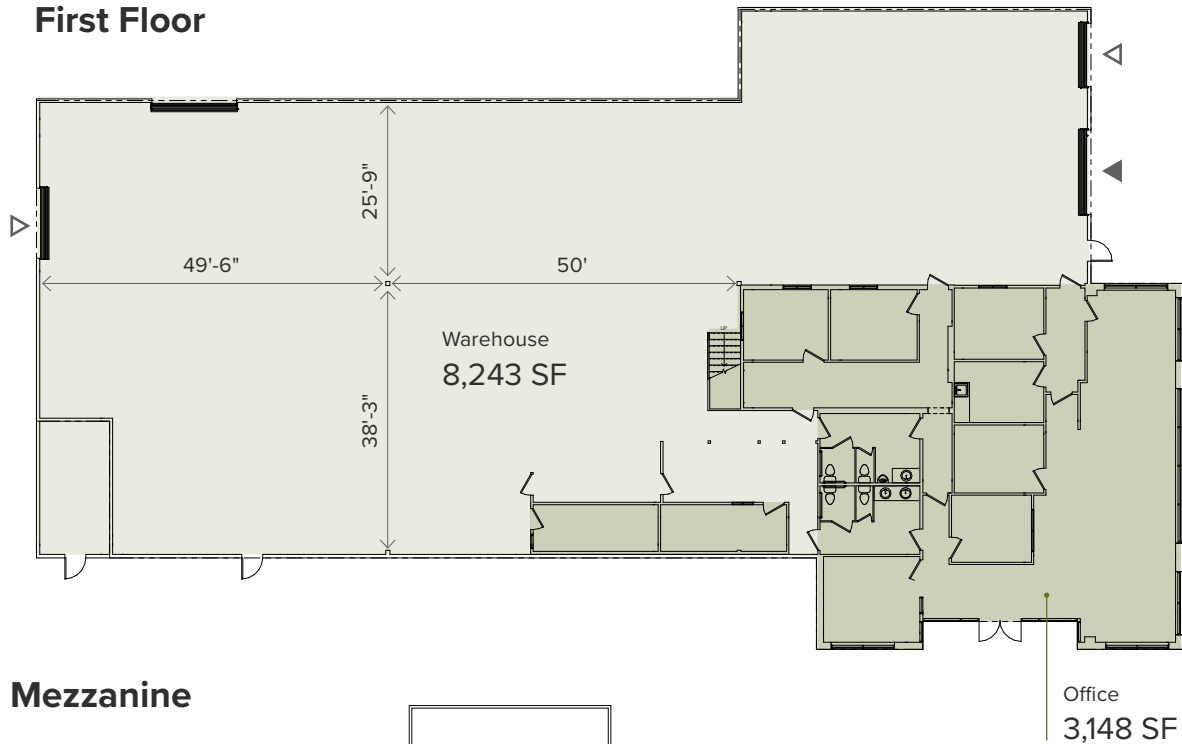
- New carpet
- New paint
- New LED lighting
- New ceiling tiles
- 24' clear height
- 7 dock high / 1 grade level
- 200 amp, 480V, 3-phase power

First-Floor Office	5,052 SF
Second-Floor Mezz.	1,275 SF
Warehouse	19,985 SF
Total Space	26,312 SF

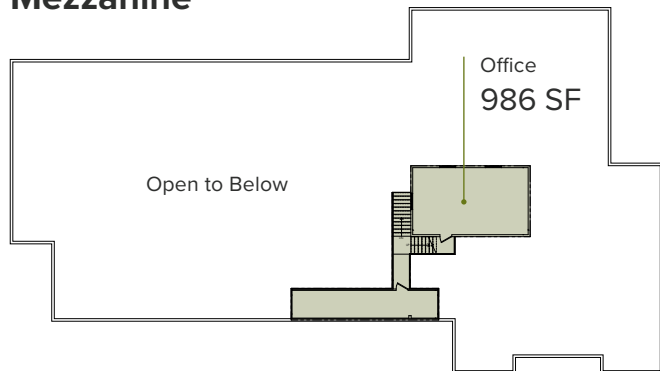


Building D Suite 100

First Floor



Mezzanine



Office Warehouse Dock-High Loading Grade-Level Loading

Available 4/1/26
Call for Rates

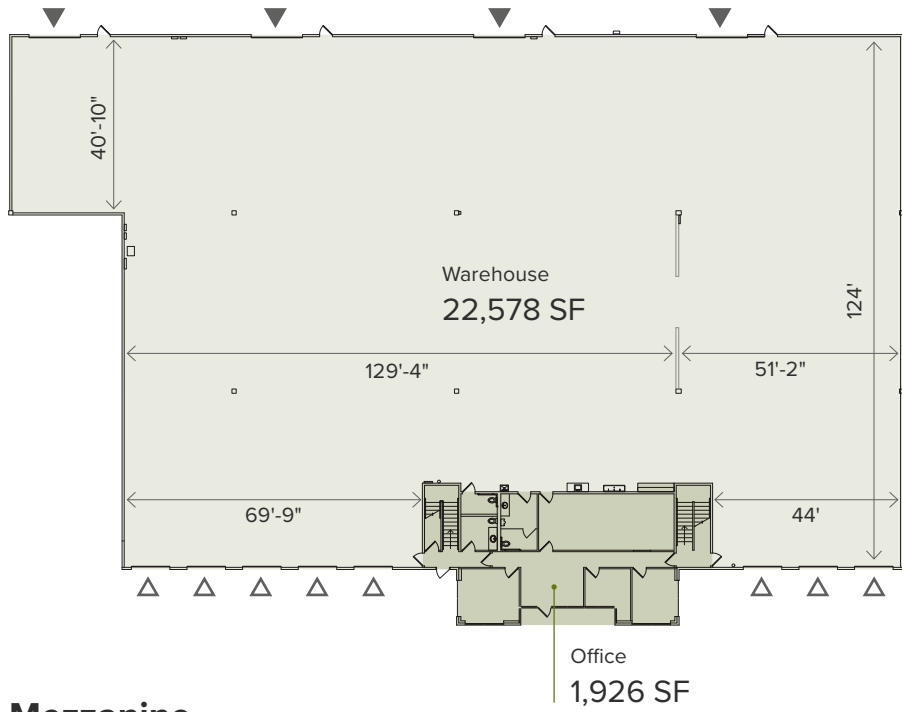
Planned improvements

- New carpet
- New paint
- New LED lighting
- 24' clear height
- 2 dock high / 1 grade level
- 200 amp 480V
3-phase meter/panel
(200 amps total)

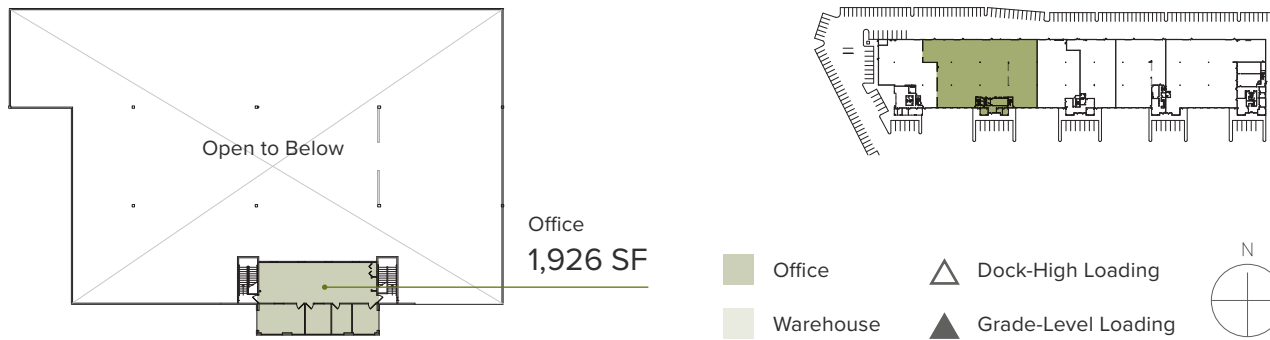
First-Floor Office	3,148 SF
Second-Floor Mezz.	986 SF
Warehouse	8,243 SF
Total Space	12,377 SF

Building F Suite 200

First Floor



Mezzanine



Available Now
Call for Rates

Planned improvements

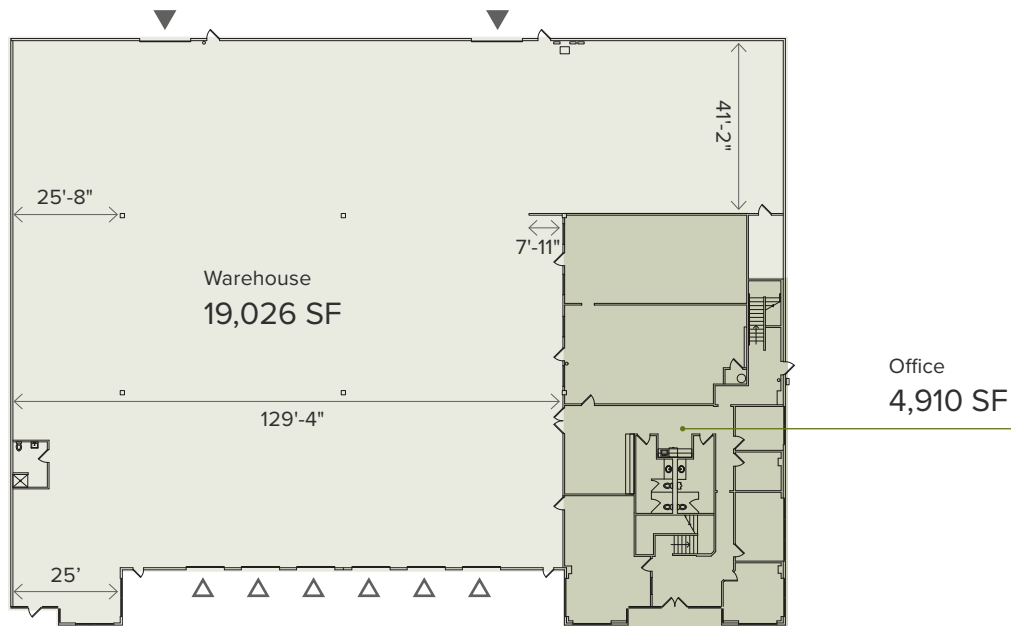
- New carpet & paint
- New LED lighting
- New ceiling tiles
- New window blinds
- White box warehouse
- 24' clear height
- 8 dock high / 4 grade level
- 600 amp, 480V, 3-phase power

First Floor Office	1,926 SF
Second Floor Office	1,926 SF
Warehouse	22,578 SF
Total Space	26,430 SF

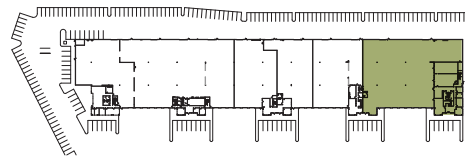
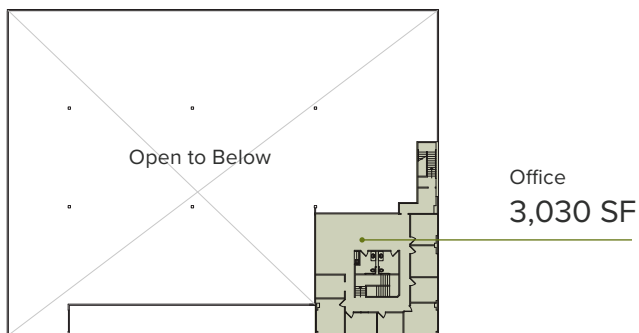


Building F Suite 800

First Floor



Mezzanine



Available Now
Call for Rates

Planned improvements

- New paint
- New LED lighting
- 24' clear height
- 6 dock high / 2 grade level
- 200 amp, 480V, 3-phase power

First Floor Office	4,910 SF
Second Floor Office	3,030 SF
Warehouse	19,026 SF
Total Space	26,966 SF



Upcoming Park Improvements



New Landscaping



Refreshed Building
Exteriors



New Park Signage



Local Institutional
Ownership



Tenant Experience
Upgrades



Mechanical & Roof
Upgrades





Nearby Amenities

EAT & DRINK

- 01** Von's 1000Spirits
- 02** The Pizza Coop & Ale House
- 03** Woodinville Café
- 04** Topsy Cow
- 05** Pasta Nova Italiano
- 06** Rusty Pelican Café
- 07** Dough Zone
- 08** Woodinville Cut Shop
- 09** Hollywood Tavern
- 10** Barking Frog
- 11** The Herbfarm
- 12** Vivi Pizzeria

LODGING

- 13** Willows Lodge
- 14** Hollywood Manor at Tenhulzen Reserve
- 15** The Somm

WINERIES & BREWERIES

- 16** Tenor Wines
- 17** Watts Brewing Company
- 18** Black Raven Brewing
- 19** Martedi Winery
- 20** Rocky Pond Estate Winery
- 21** Novelty Hill – Januik Winery
- 22** Chateau Ste. Michelle Winery
- 23** Mark Ryan Winery
- 24** Fidélitas
- 25** DeLille Cellars
- 26** Sparkman Cellars
- 27** Patterson Cellars
- 28** Latta Wines



Drive Times

Located in the heart of Woodinville, with convenient drive-time access to top restaurants, retail, and key amenities



Owner Profile



Industrial Real Estate
Focused on **Location**,
Functionality, and
Flexibility.

306

Buildings

19M

Square Feet

47

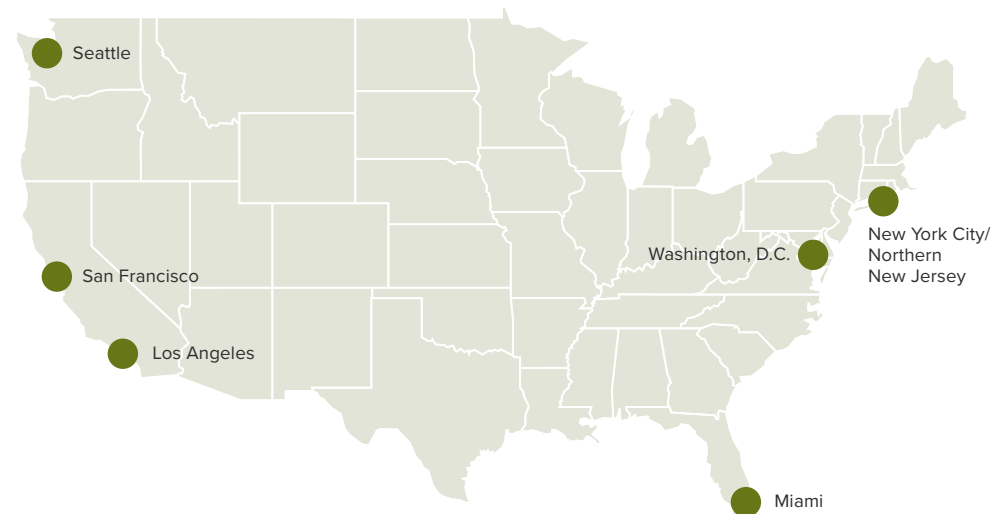
Improved
Land Parcels

688

Customers

Terreno Realty acquires,
owns and operates
industrial real estate in six
major coastal U.S. markets.

These properties may be warehouse/distribution, flex
(including light industrial and R&D), transshipment
(truck terminals) or improved land parcels.



[LEARN MORE AT TERRENO.COM](https://www.terreno.com)





Woodinville Corporate Park

15300 – 15500 Woodinville-Redmond Rd
Woodinville, WA 98072

woodinvillecorporatepark.com kidder.com

Exclusively listed by

Todd Gauthier
Executive Vice President
425.450.1118
todd.gauthier@kidder.com

Carter Nicholson
Associate
425.450.1145
carter.nicholson@kidder.com

Jason Bloom
Executive Vice President
425.450.1102
jason.bloom@kidder.com

Greg Fuchs
Associate
425.450.1161
greg.fuchs@kidder.com



SCAN TO
LEARN MORE



This information supplied herein is from sources we deem reliable. It is provided without any representation, warranty, or guarantee, expressed or implied as to its accuracy. Prospective Buyer or Tenant should conduct an independent investigation and verification of all matters deemed to be material, including, but not limited to, statements of income and expenses. Consult your attorney, accountant, or other professional advisor.