

24TH STREET BUSINESS PARK

FOR LEASE

24TH ST E & 138TH AVE S | SUMNER, WA

PREMIER BUSINESS PARK IN SOUTH KENT VALLEY



CALL BROKERS FOR LEASE RATE

24th Street Business Park is a high quality office/ warehouse, distribution or manufacturing facility suitable for a wide variety of business types. The property is well located immediately off Highway-167. Fully sprinkled and flexible sizing up to 20,000 SF means this location can accommodate your business as it grows.

PROPERTY FEATURES:

- Insulated bay doors (14'x14') with electric openers
- 18' - 20' clear height with clear span
- Insulated and sprinklered buildings with gas heat
- Heavy 3-phase power to each unit
- Immediate access to Hwy-167
- Nearby amenities include hotel, gas, food, banking
- M-1 Zoning
- No B&O tax in Sumner!



SPENCER MEAD

206.787.1476

smead@neilwalter.com

GRIFFIN DAY

206.261.4012

gday@neilwalter.com

JOHN BLEDSOE

206.787.1460

jbledsoe@neilwalter.com

professionally
managed/owned by:



All information references in this document are approximate. The information contained herein is contained from sources deemed reliable. It is provided without representation, warranty, or guarantee, expressed or implied as to accuracy. Prospective buyer or tenant should conduct its own independent investigation relating to the property, government codes and regulations, allowed uses, and all other matters, regardless of whether they are referred to or contained in this document.

24TH STREET BUSINESS PARK

24TH ST E & 138TH AVE S | SUMNER, WA



CALL BROKERS FOR LEASE RATES

NORTH BUILDINGS AVAILABILITY

Bldg/Unit	Total Size	Office Size	Comments
E1/2/9/10	8,012 SF	1,539 SF	Available now; 4 GL doors
B2/9	5,034 SF	380 SF	Available now; 2 GL doors
C8/9	4,006 SF	562 SF	Available in 30-60 days; 1 GL door

SOUTH BUILDINGS AVAILABILITY

Bldg/Unit	Total Size	Office Size	Comments
C101/103-108/110	10,820 SF	2,138 SF	Available 12/1/2025; 3 GL doors
A105	1,133 SF	1,133 SF	Available 2/1/2026



SPENCER MEAD

206.787.1476

smead@neilwalter.com

GRIFFIN DAY

206.261.4012

gday@neilwalter.com

JOHN BLEDSOE

206.787.1460

jbledsoe@neilwalter.com

All information references in this document are approximate. The information contained herein is contained from sources deemed reliable. It is provided without representation, warranty, or guarantee, expressed or implied as to accuracy. Prospective buyer or tenant should conduct its own independent investigation relating to the property, government codes and regulations, allowed uses, and all other matters, regardless of whether they are referred to or contained in this document.

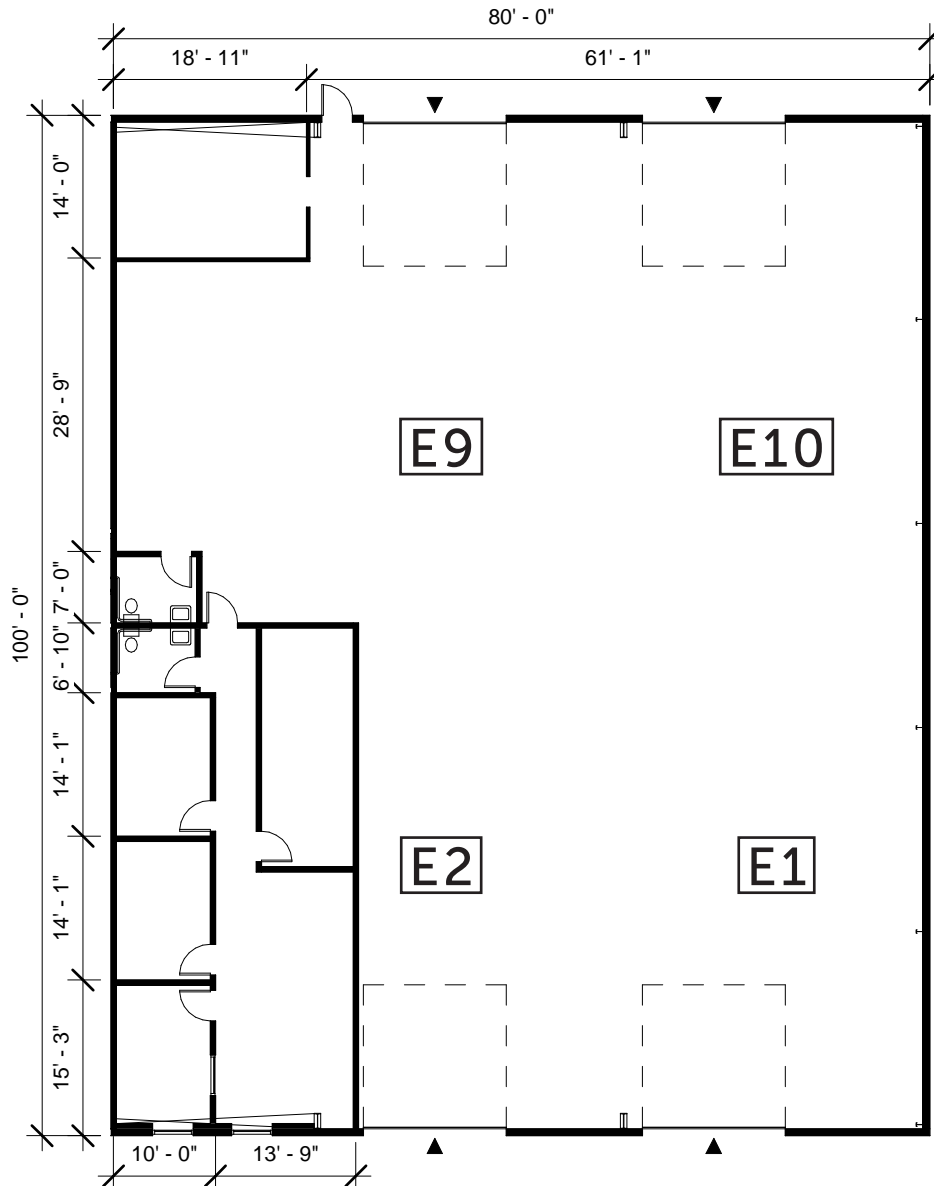
24TH STREET BUSINESS PARK

24TH ST E & 138TH AVE S | SUMNER, WA



NORTH BUILDINGS AVAILABILITY

Bldg/Unit	Total Size	Office Size	Comments
E1/2/9/10	8,012 SF	1,539 SF	Available 5/1/2025; 4 GL doors



SPENCER MEAD 206.787.1476 smead@neilwalter.com
GRIFFIN DAY 206.261.4012 gday@neilwalter.com
JOHN BLEDSOE 206.787.1460 jbledsoe@neilwalter.com

All information references in this document are approximate. The information contained herein is contained from sources deemed reliable. It is provided without representation, warranty, or guarantee, expressed or implied as to accuracy. Prospective buyer or tenant should conduct its own independent investigation relating to the property, government codes and regulations, allowed uses, and all other matters, regardless of whether they are referred to or contained in this document.

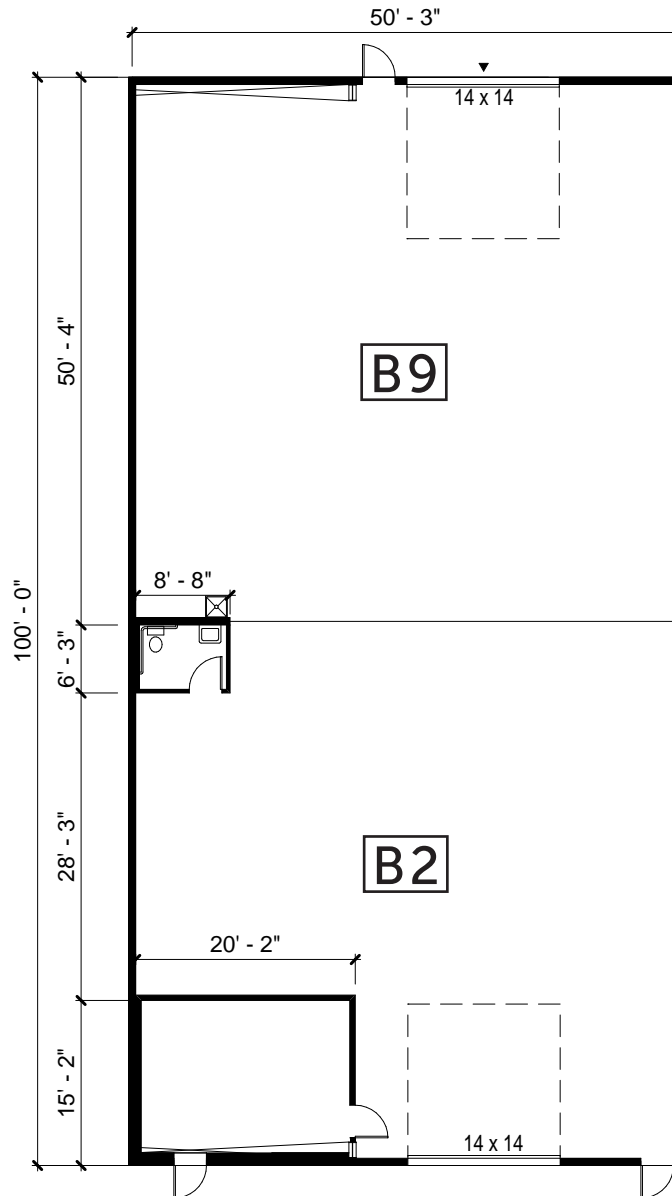
24TH STREET BUSINESS PARK

24TH ST E & 138TH AVE S | SUMNER, WA



NORTH BUILDINGS AVAILABILITY

Bldg/Unit	Total Size	Office Size	Comments
B2/9	5,034 SF	380 SF	Available now; 2 GL doors



SPENCER MEAD

206.787.1476

smead@neilwalter.com

GRIFFIN DAY

206.261.4012

gday@neilwalter.com

JOHN BLEDSOE

206.787.1460

jbledsoe@neilwalter.com

All information references in this document are approximate. The information contained herein is contained from sources deemed reliable. It is provided without representation, warranty, or guarantee, expressed or implied as to accuracy. Prospective buyer or tenant should conduct its own independent investigation relating to the property, government codes and regulations, allowed uses, and all other matters, regardless of whether they are referred to or contained in this document.

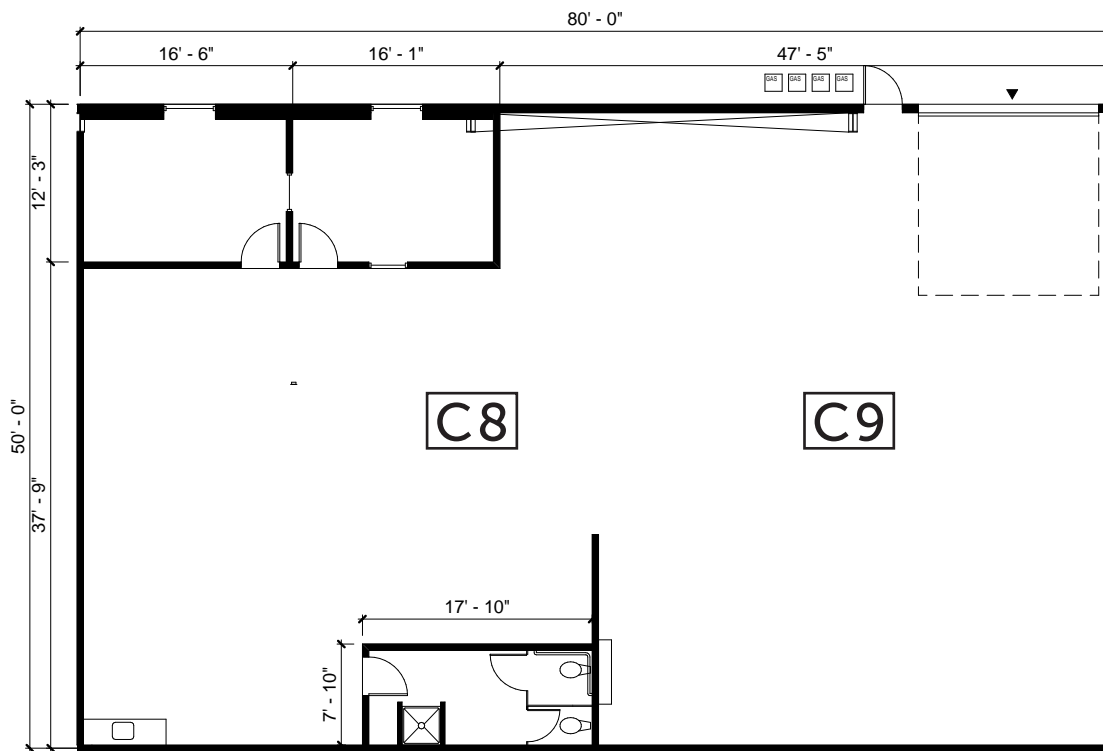
24TH STREET BUSINESS PARK

24TH ST E & 138TH AVE S | SUMNER, WA



NORTH BUILDINGS AVAILABILITY

Bldg/Unit	Total Size	Office Size	Comments
C8/9	4,006 SF	562 SF	Available in 30-60 days; 1 GL door



SPENCER MEAD

206.787.1476

smead@neilwalter.com

GRIFFIN DAY

206.261.4012

gday@neilwalter.com

JOHN BLEDSOE

206.787.1460

jbledsoe@neilwalter.com

All information references in this document are approximate. The information contained herein is contained from sources deemed reliable. It is provided without representation, warranty, or guarantee, expressed or implied as to accuracy. Prospective buyer or tenant should conduct its own independent investigation relating to the property, government codes and regulations, allowed uses, and all other matters, regardless of whether they are referred to or contained in this document.

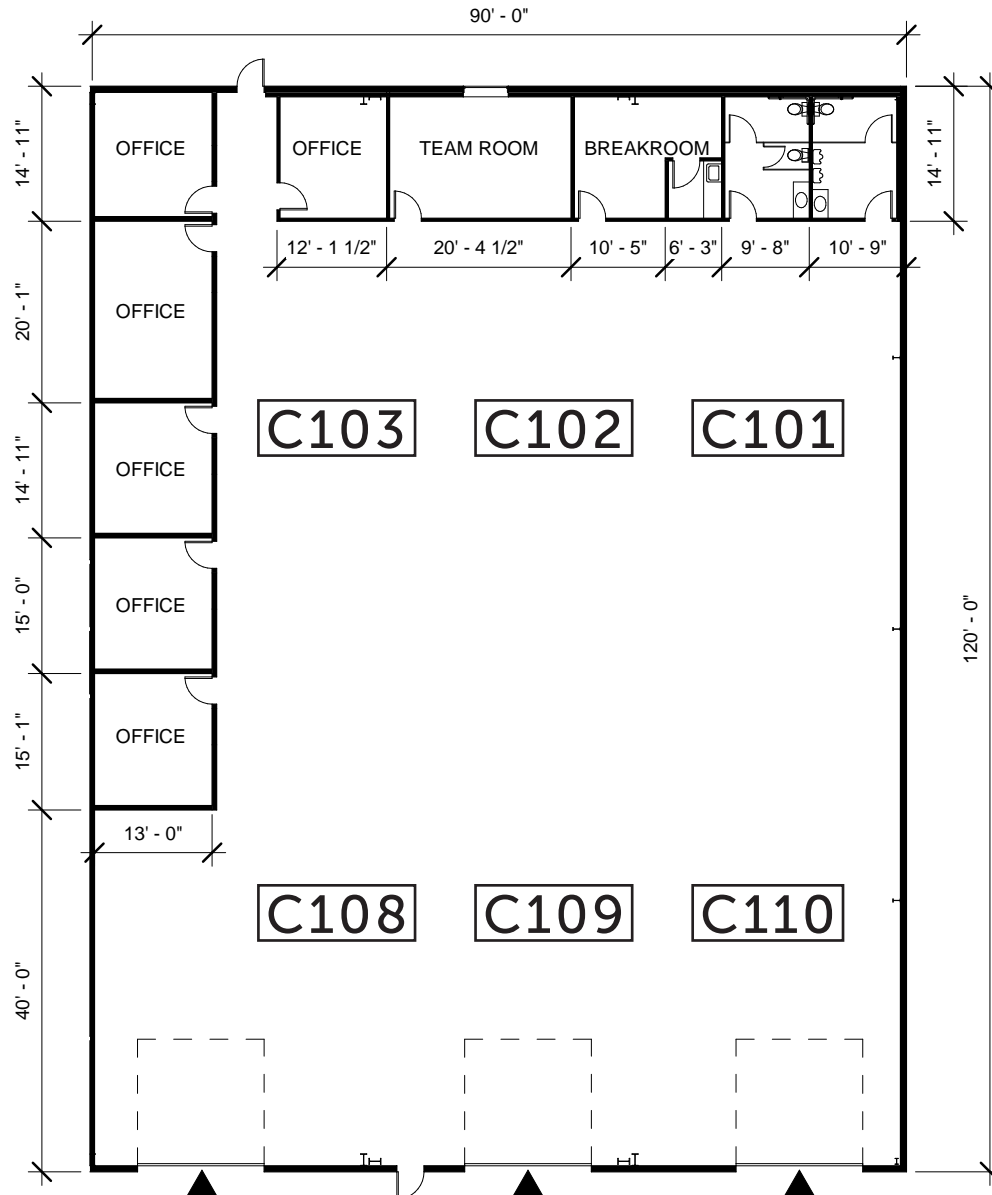
24TH STREET BUSINESS PARK

24TH ST E & 138TH AVE S | SUMNER, WA



SOUTH BUILDINGS AVAILABILITY

Bldg/Unit	Total Size	Office Size	Comments
C101/103-108/110	10,820 SF	2,138 SF	Available 12/1/2025; 3 GL doors



SPENCER MEAD

206.787.1476

smead@neilwalter.com

GRIFFIN DAY

206.261.4012

gday@neilwalter.com

JOHN BLEDSOE

206.787.1460

jbledsoe@neilwalter.com

All information references in this document are approximate. The information contained herein is contained from sources deemed reliable. It is provided without representation, warranty, or guarantee, expressed or implied as to accuracy. Prospective buyer or tenant should conduct its own independent investigation relating to the property, government codes and regulations, allowed uses, and all other matters, regardless of whether they are referred to or contained in this document.

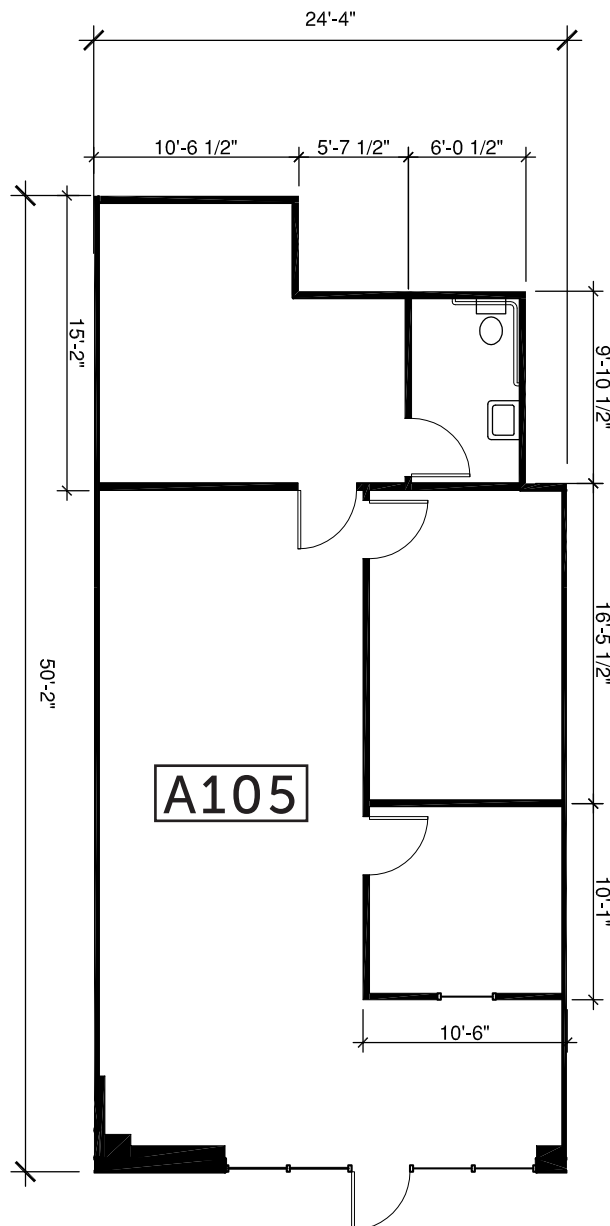
24TH STREET BUSINESS PARK

24TH ST E & 138TH AVE S | SUMNER, WA



SOUTH BUILDINGS AVAILABILITY

Bldg/Unit	Total Size	Office Size	Comments
A105	1,133 SF	1,133 SF	Available 2/1/2026



SPENCER MEAD	GRIFFIN DAY	JOHN BLED SOE
206.787.1476	206.261.4012	206.787.1460
smead@neilwalter.com	gday@neilwalter.com	jbledsoe@neilwalter.com

All information references in this document are approximate. The information contained herein is contained from sources deemed reliable. It is provided without representation, warranty, or guarantee, expressed or implied as to accuracy. Prospective buyer or tenant should conduct its own independent investigation relating to the property, government codes and regulations, allowed uses, and all other matters, regardless of whether they are referred to or contained in this document.