

# FOR LEASE

5715 Wollochet Dr NW  
Gig Harbor, WA 98335



## WOLLOCHET BUSINESS PARK

Ray Velkers

First Western Properties—Tacoma Inc. | 253.472.0404  
6402 Tacoma Mall Blvd, Tacoma, WA 98409 | fwp-inc.com

## AVAILABLE FOR LEASE

**SUITE 202: 400 SF**     **\$1,100/MONTH**  
**INCLUDING UTILITIES + NNN**

- Quiet business park setting
- Warehouse door + lower level storage
- Easy access to Highway 16 via Wollochet off-ramp



Regis - 2024

Population



Average HH Income



Daytime Population

Mile 1

4,052

\$185,123

2,806

Mile 3

28,195

\$186,741

21,391

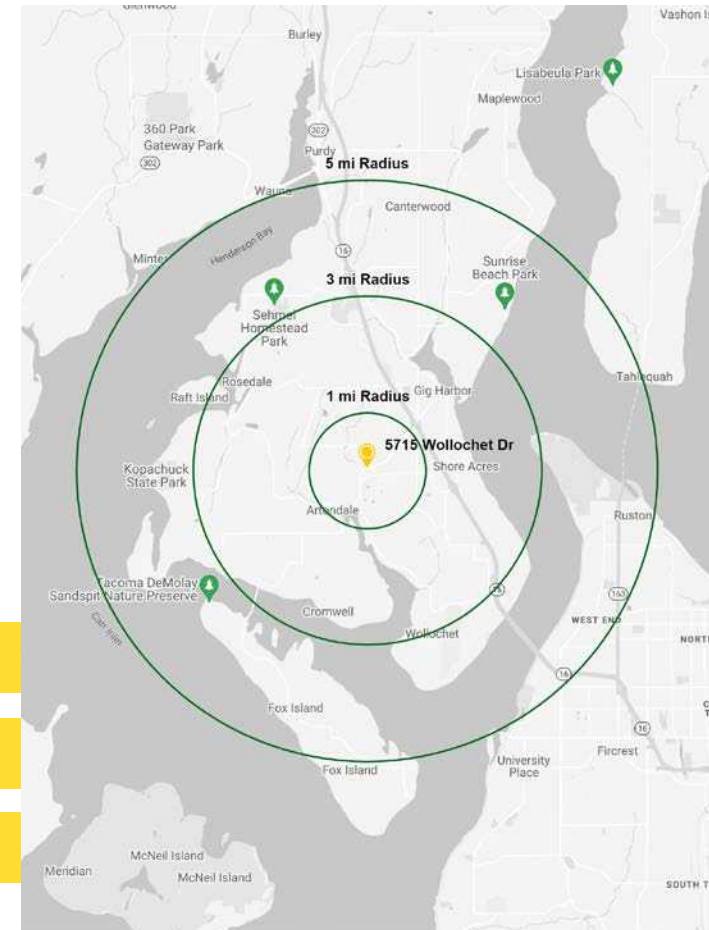
Mile 5

60,650

\$185,877

39,606

## BUSINESS NEARBY



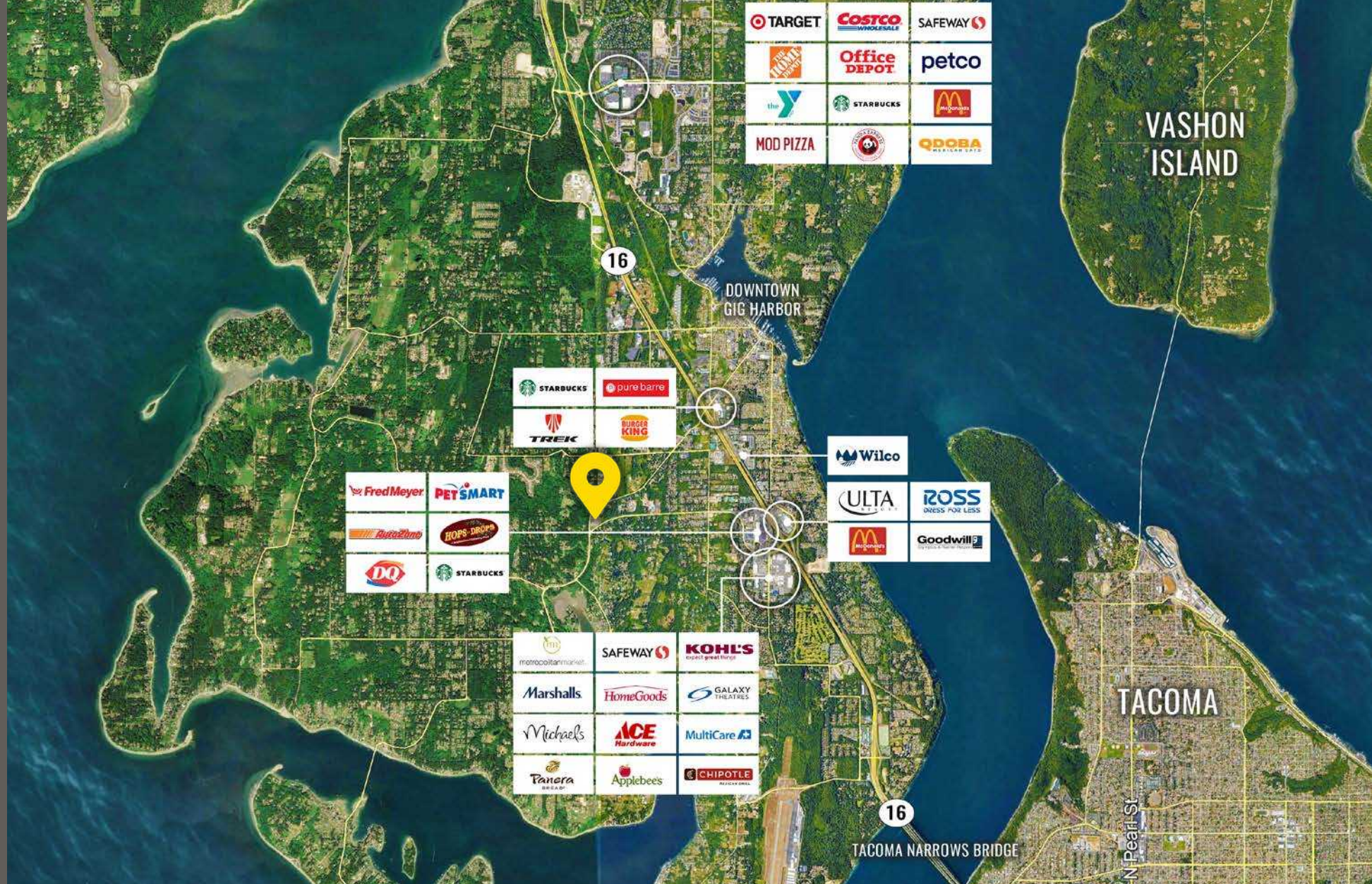
# SUMMARY



# SUMMARY



# LOCATION DETAILS



Quiet office location near shopping & dining

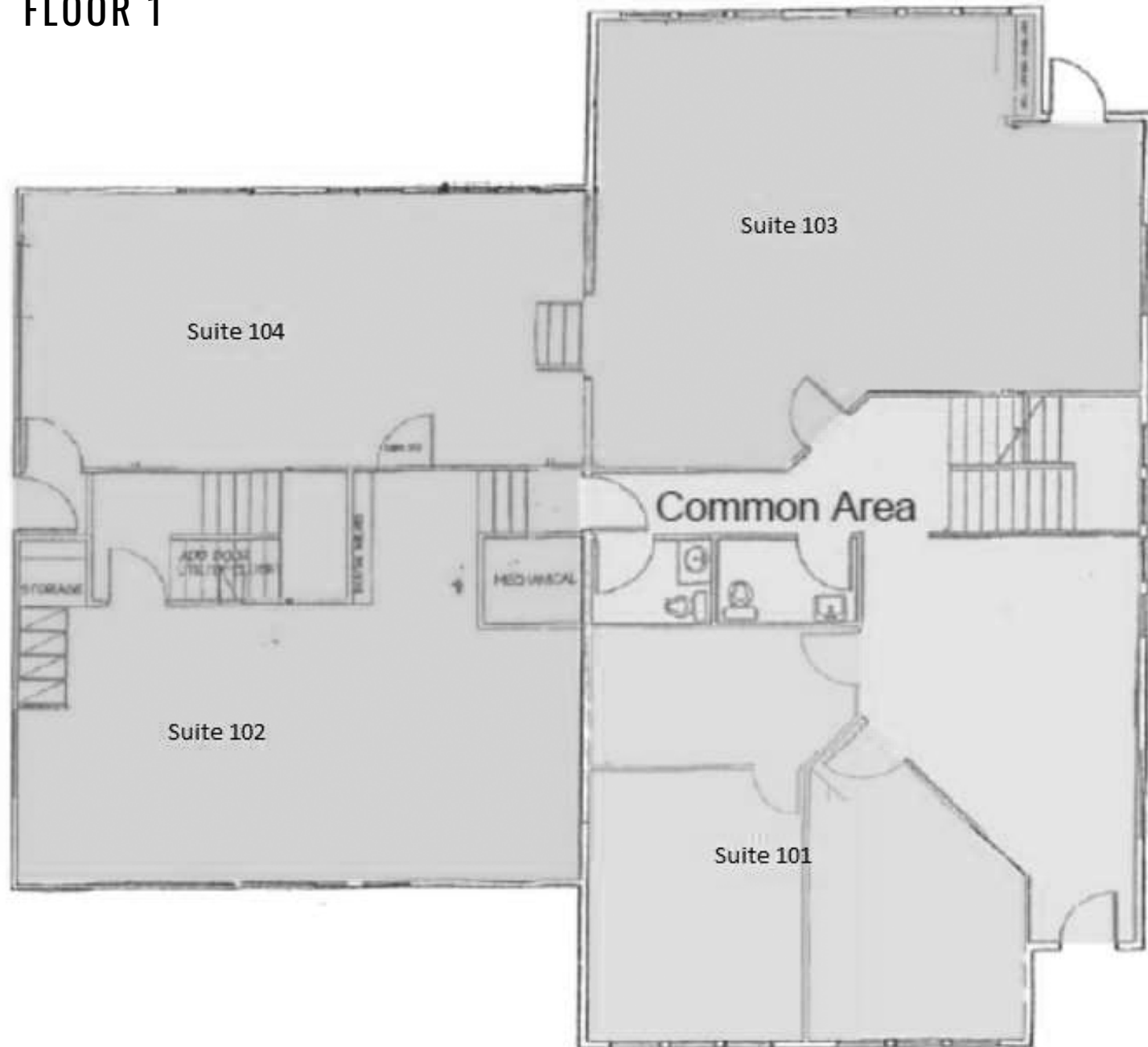


Located minutes to Hwy 16 access

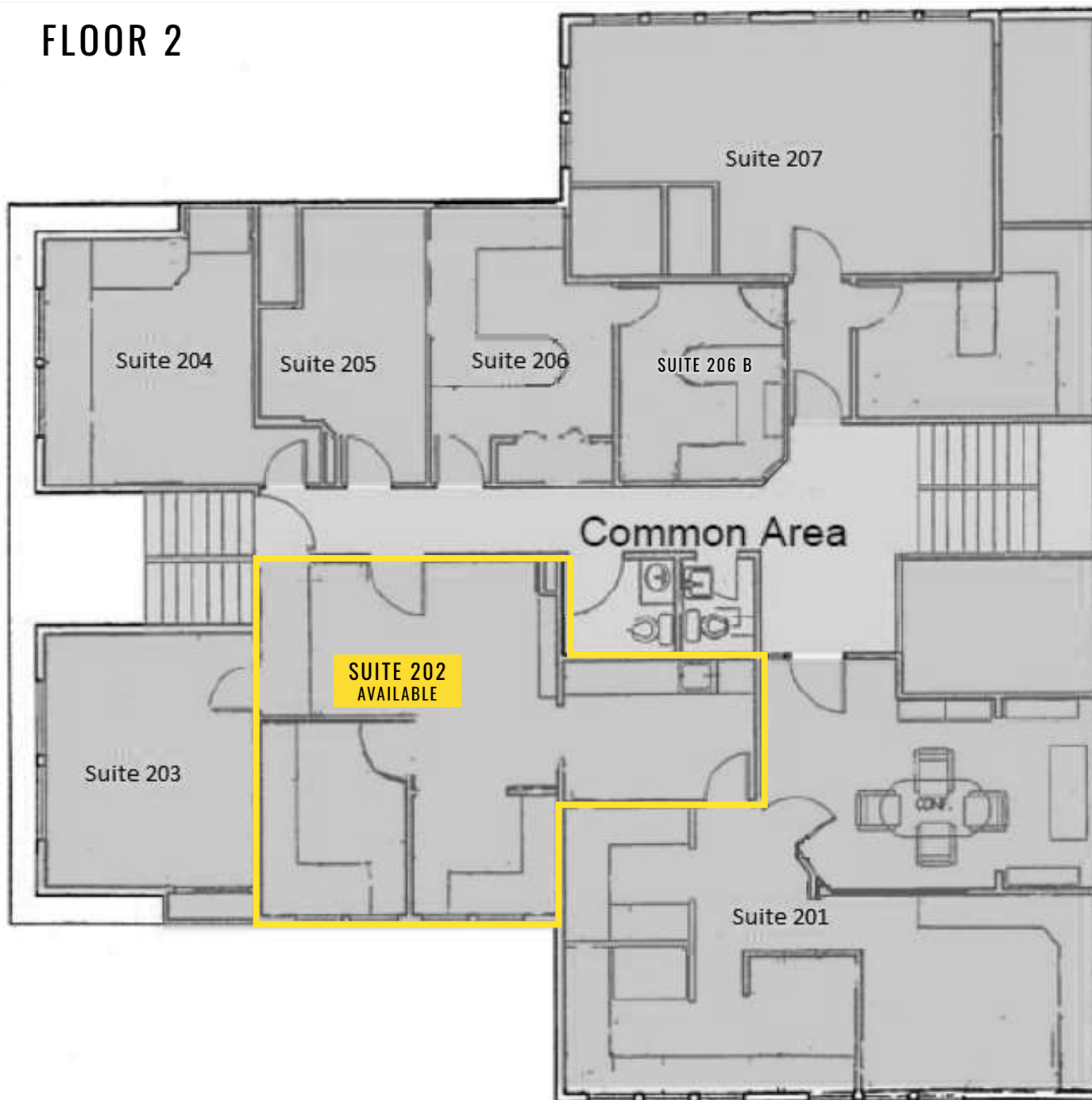


11,000 CPD Wollochet Dr

## FLOOR 1



## FLOOR 2



TACOMA | KIRKLAND | PORTLAND | SEATTLE

RELATIONSHIP FOCUSED.  
RESULTS DRIVEN.

RAY VELKERS

📞 253.284.3632

✉️ ray@firstwesternproperties.com



First Western Properties—Tacoma Inc. | 253.472.0404  
6402 Tacoma Mall Blvd, Tacoma, WA 98409 | fwp-inc.com

© First Western Properties, Inc. DISCLAIMER: The above information has been secured from sources believed to be reliable, however, no representations are made to its accuracy. Prospective tenants or buyers should consult their professional advisors and conduct their own independent investigation. Properties are subject to change in price and/or availability without notice.